



# GAS COMPANY LOFTS

*810 Flower St., Los Angeles, CA*

SECOND GENERATION RETAIL FOR LEASE - 2,723 SF & 15,183 SF



---

## *Property highlights*

Adjacent to the core of upscale retail in Downtown Los Angeles, this expansive 15,183 square foot retail space offers a unique blend of historic charm and modern potential. Housed within a meticulously preserved landmark building, the venue boasts soaring ceilings, ornate fresco designs, and expansive windows encased in ornate architectural detail. With its versatile open floor plan, this location is perfectly suited for a variety of upscale concepts or as a stunning backdrop for memorable events. The space seamlessly marries the elegance of a bygone era with the functionality required for today's discerning clientele. Whether you envision a high-end boutique, a curated marketplace, or an exclusive event venue, this historic gem provides the perfect canvas to bring your vision to life!



*Fully built restrooms  
to accommodate  
large gathering  
space*



*Parking  
garage  
adjacent*



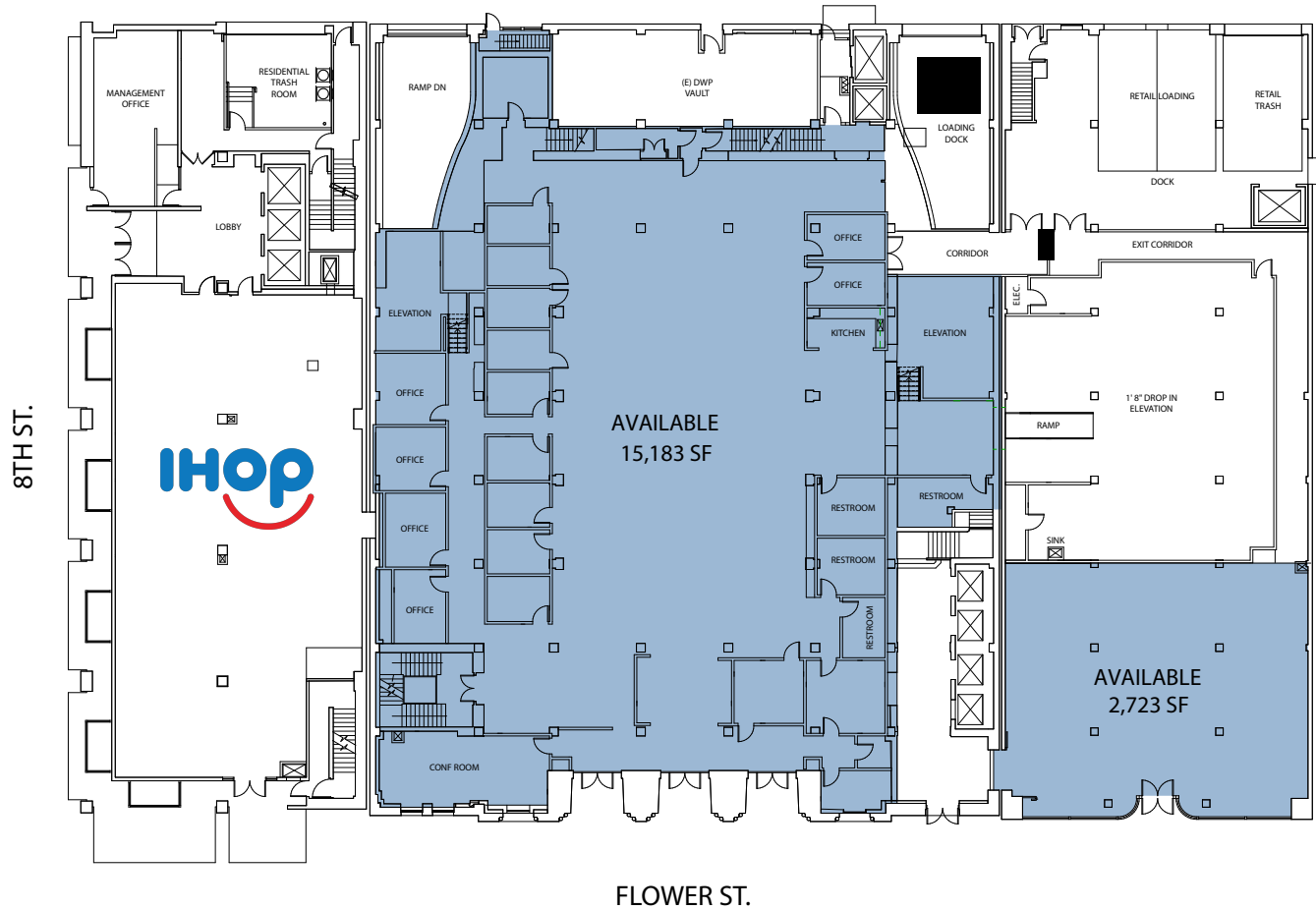
*Reception,  
kitchen and  
meeting areas*



*On-site  
building  
security*

# Floor plan

EXCLUSIVE ALLEY








Available

Occupied





# Market overview

	1 Mile	3 Miles	5 Miles
 <i>Total population</i>	89,793	533,689	1,201,444
 <i>Average household income</i>	\$96,515	\$83,461	\$92,318
 <i>Total households</i>	47,297	207,093	438,634
 <i>Daytime population</i>	204,808	667,294	1,251,888
 <i>Median age</i>	35.6	34.9	35.9



# Neighborhood



DINING	HOTELS	RETAIL & ENTERTAINMENT	EDUCATION	FITNESS	NEARBY MULTI-FAMILY
<ol style="list-style-type: none"> <li>Joey</li> <li>Capital Grill</li> <li>Sweetgreen</li> <li>Tocaya</li> <li>Chipotle</li> <li>HALO</li> <li>Orsa &amp; Winston</li> <li>Shiku</li> <li>Perch</li> <li>Sonoratown</li> <li>Rossoblu</li> <li>Sugarfish</li> <li>Shake Shack</li> <li>Bossa Nova</li> <li>California Chicken Cafe</li> <li>Perch</li> <li>Grand Central Market</li> <li>Holbox</li> <li>San Laurel</li> <li>Badmaash</li> <li>Niku X</li> <li>The Exchange</li> <li>Holy Basil</li> </ol>	<ol style="list-style-type: none"> <li>The Freehand</li> <li>The Ace</li> <li>Proper Hotel</li> <li>The Hoxton</li> <li>The JW Marriott</li> <li>The Intercontinental</li> <li>The NoMad</li> <li>The Figueroa</li> <li>The Ritz Carlton</li> <li>The Omni</li> <li>The Conrad</li> <li>STILE Downtown LA</li> <li>Level Los Angeles</li> </ol>	<ol style="list-style-type: none"> <li>The Bloc</li> <li>Alamo Drafthouse</li> <li>Lululemon</li> <li>Macy's Flagship</li> <li>Nordstrom Local</li> <li>Uniqlo</li> <li>Apple Store</li> <li>Aesop</li> <li>Foot Locker</li> <li>West Elm</li> <li>Raphaella</li> <li>Capital One Cafe</li> <li>Crypto / LA Live</li> <li>(9 minute walk &amp; key restaurants within)</li> <li>The Mayan Theater</li> <li>LA Convention Center</li> <li>Disney Concert Hall</li> <li>Grand Central Market</li> <li>The Jonathan Club</li> </ol>	<ol style="list-style-type: none"> <li>FIDM</li> <li>Arizona State University</li> <li>UCLA Law Satellite Campus</li> </ol>	<ol style="list-style-type: none"> <li>Orange Theory Fitness</li> <li>John Reed Fitness</li> <li>Equinox</li> <li>Sanctuary Fitness</li> <li>LA Fitness</li> <li>Corepower Yoga</li> <li>LA Athletic Club</li> <li>Lagree 213</li> </ol>	<p>Circa LA (648 Units)</p> <p>Hope + Flower (665 Units)</p> <p>Aven (536 Units)</p> <p>888 at Grand Hope Park (525 Units)</p> <p>825 South Hill (497 Units)</p> <p>Broadway Palace (649 Units)</p> <p>Alina (341 Units)</p> <p>Sentral DTLA at 732 (300 Units)</p> <p>Sentral DTLA at 755 (275 Units)</p> <p>1133 Hope (208 Units)</p> <p>The Met Apartments (270 Units)</p>

## GROCCERS

- Whole Foods
- Ralphs
- PK Market





*FRANCESCA HOWARD*  
RE License #02125832  
Vice President  
[francesca.howard@jll.com](mailto:francesca.howard@jll.com)  
+1 310 536 6334

*SHAUNA MATTIS*  
RE License #01071320  
Managing Director  
[shauna.mattis@jll.com](mailto:shauna.mattis@jll.com)  
+1 310 749 4790

## *Gas Company Lofts*

*810 Flower St., Los Angeles, CA*

Although information has been obtained from sources deemed reliable, neither Owner nor JLL makes any guarantees, warranties or representations, express or implied, as to the completeness or accuracy as to the information contained herein. Any projections, opinions, assumptions or estimates used are for example only. There may be differences between projected and actual results, and those differences may be material. The Property may be withdrawn without notice. Neither Owner nor JLL accepts any liability for any loss or damage suffered by any party resulting from reliance on this information. If the recipient of this information has signed a confidentiality agreement regarding this matter, this information is subject to the terms of that agreement. ©2024, Jones Lang LaSalle IP, Inc. All rights reserved.