

FOR LEASE

1850 Soscol Avenue | Napa

±1,513 - ±7,027 RSF Available



Chris Neeb

Managing Director

+1 707 495 7777

chris.neeb@jll.com

CA RE License #01324612

Laura Duffy

Vice President

+1 415 686 0255

laura.duffy@jll.com

CA RE License #01922792

Matt Bracco

Sr. Managing Director

+1 925 200 3537

matt.bracco@jll.com

CA RE License #01185434



Jones Lang LaSalle Brokerage, Inc. Real Estate License# 01856260

Property Highlights



±29,212 SF, two-story,
Class 'A' office building
APN: 044-210-012



Abundant parking
4.6/1,000 SF



Excellent visibility along Soscol
Avenue; building/monument
signage opportunities



Centrally located with
abundant retail amenities
within walking distance



Local, reputable landlord,
responsive property
management team



Office/Medical/Dental/Health
related uses permitted
[Zoning: CC \(Link\)](#)

Availabilities

First Floor

Suite 101	1,513 RSF	1 private office, conference room, kitchenette, open office area
Suite 105-107	7,027 RSF	3 private offices, 2 conference rooms, kitchen / break room, open office layout. Divisible.

Second Floor

Suite 201-203	5,188 RSF	9 private offices, large conference room, kitchen / break room, large, open office area
Suite 204	2,454 RSF	3 private offices with exterior entrances to main hallway, open office layout. Divisible to 151, 155, 233 & 1,915 RSF
Suite 205	2,151 RSF	4 private offices, conference room, kitchen / break room
Suite 206	2,161 RSF	2 private offices, conference room, kitchen / break room, open office layout

[Click to view floor plans](#)



Floor Plan

First Floor

Suite 101 | ±1,513 RSF

- Two private offices
- Kitchenette
- Open office area



Suite 105-107 | ±7,027 RSF

- Three private offices
- Large, open office layout
- Conference room
- Kitchen / Break room
- Divisible

Floor Plan

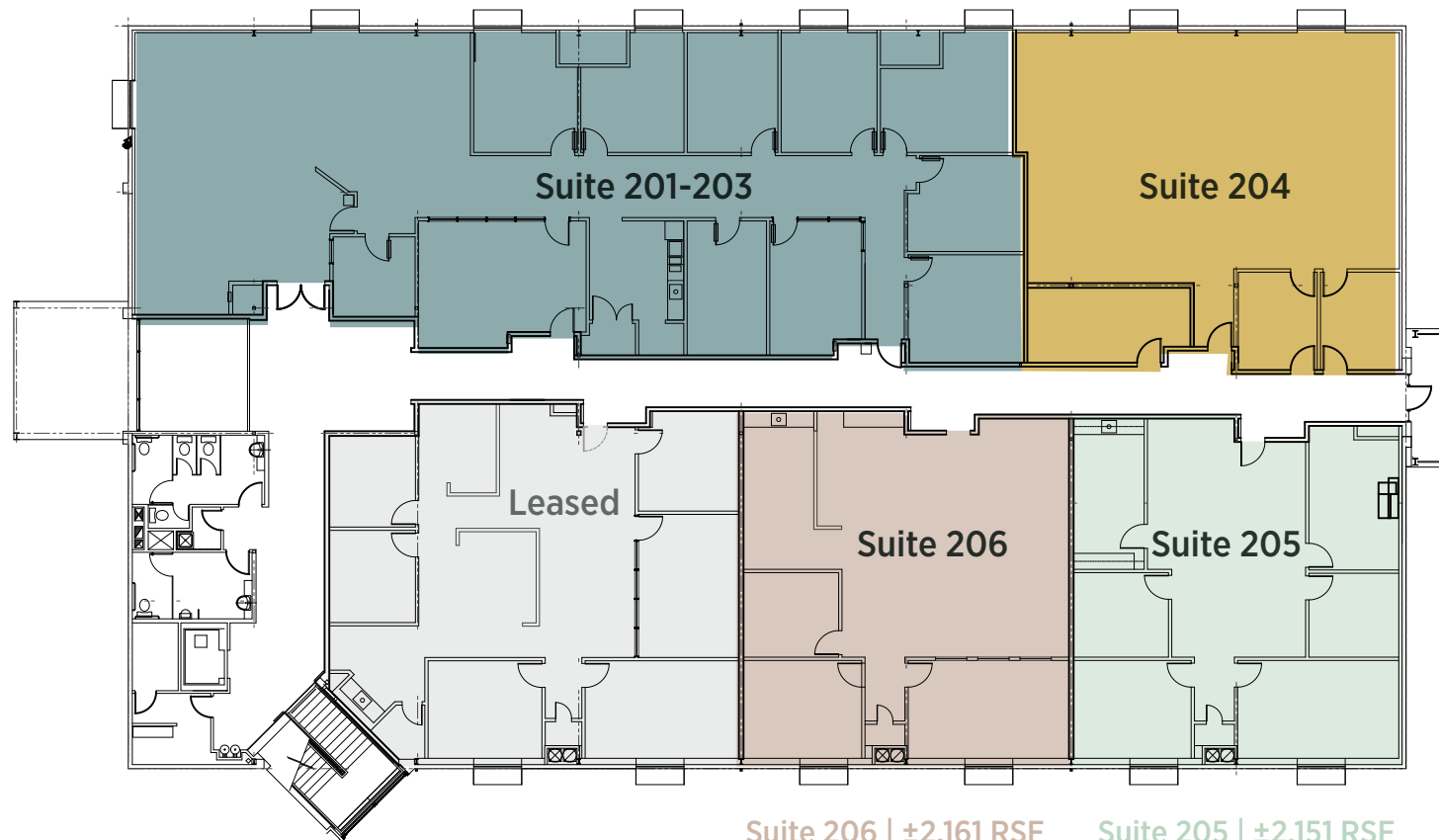
Second Floor

Suite 201-203 | ±5,188 RSF

- Nine private offices
- Large conference room
- Kitchenette / break room
- Large, open office area

Suite 204 | ±2,454 RSF

- Three private offices with exterior entrances to main hallway
- Divisible to 151, 155, 233 & 1,915 RSF
- Large, open office layout
- Conference room
- Kitchen / Break room



Suite 206 | ±2,161 RSF

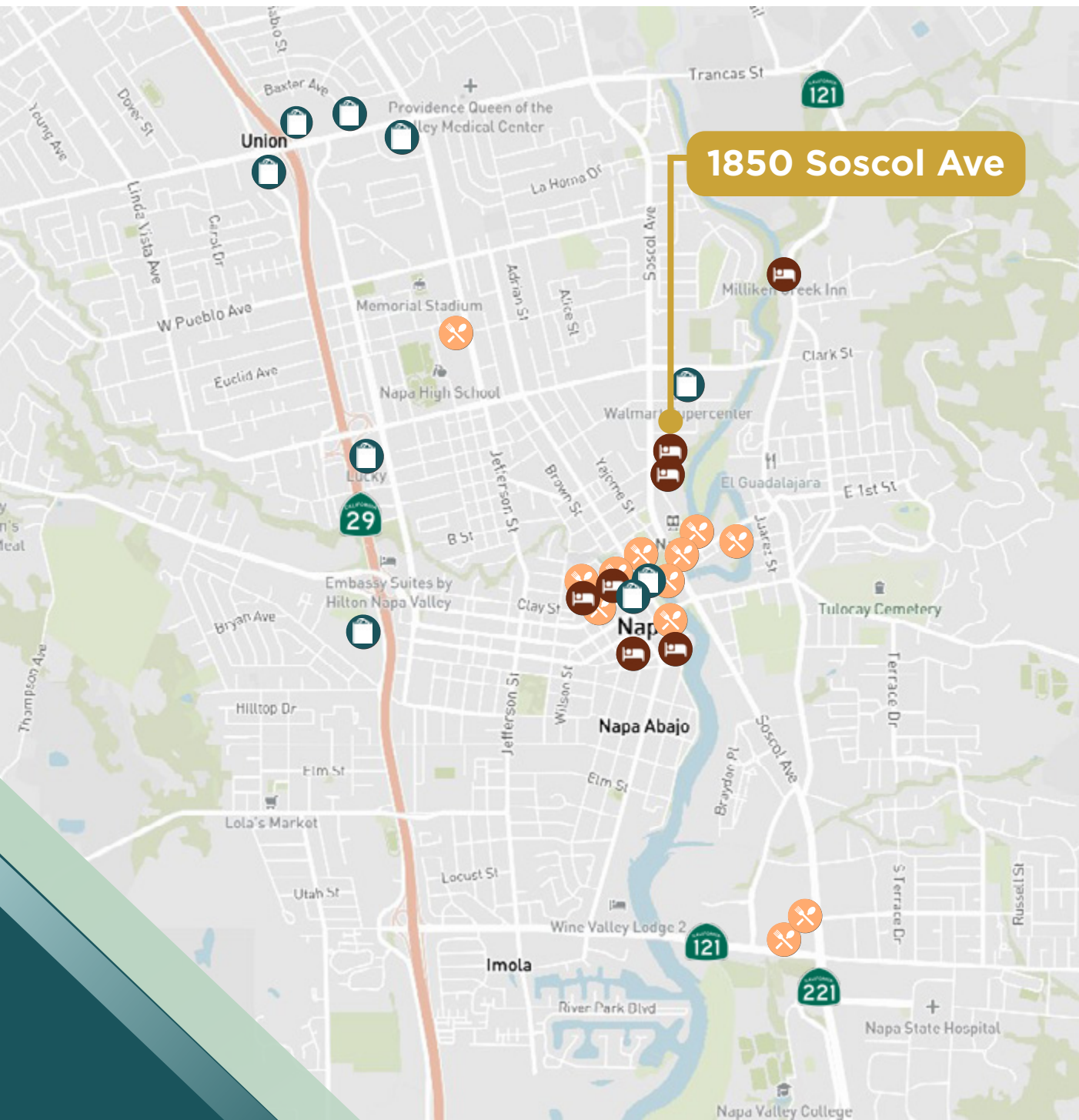
- Two private offices
- Conference room
- Kitchen / break room
- Open office layout

Suite 205 | ±2,151 RSF

- Four private offices
- Conference room
- Kitchen / break room



Amenities



SHOPPING

Walmart
Northwood Shopping Center
Bel Aire Plaza
Jefferson Square
Redwood Plaza
The Grape Yard Shopping Center
Napa Square
First Street Napa
Lucky Center
Napa Premium Outlets

HOTELS

River Terrace Inn
The Westin Verasa Napa
Andaz Napa
Archer Hotel
R Inn Napa
Napa River Inn
Milliken Creek Inn

RESTAURANTS

Oxbow Public Market
Gott's Roadside
Bounty Hunter
Angele Restaurant & Bar
Napa Yard - Oxbow Gardens
Morimoto Napa
Scala Osteria & Bar
Oenotri
Norman Rose Tavern
In-N-Out Burger
Applebee's
Dutch Bro's Coffee



Contact info

Chris Neeb

Managing Director

+1 707 495 7777

chris.neeb@jll.com

CA RE License #01324612

Laura Duffy

Vice President

+1 415 686 0255

laura.duffy@jll.com

CA RE License #01922792

Matt Bracco

Sr. Managing Director

+1 925 200 3537

matt.bracco@jll.com

CA RE License #01185434



Jones Lang LaSalle Brokerage, Inc. Real Estate Lic# 01856260

Although information has been obtained from sources deemed reliable, neither Owner nor JLL makes any guarantees, warranties or representations, express or implied, as to the completeness or accuracy as to the information contained herein. Any projections, opinions, assumptions or estimates used are for example only. There may be differences between projected and actual results, and those differences may be material. The Property may be withdrawn without notice. Neither Owner nor JLL accepts any liability for any loss or damage suffered by any party resulting from reliance on this information. If the recipient of this information has signed a confidentiality agreement regarding this matter, this information is subject to the terms of that agreement. ©2025. Jones Lang LaSalle IP, Inc. All rights reserved.