



2649 N Central Ave

SEC N Central Ave & W Schubert Ave
Chicago, IL 60639



Steve Schwartz

Senior Vice President
+1 312 228 2157
steve.schwartz@jll.com

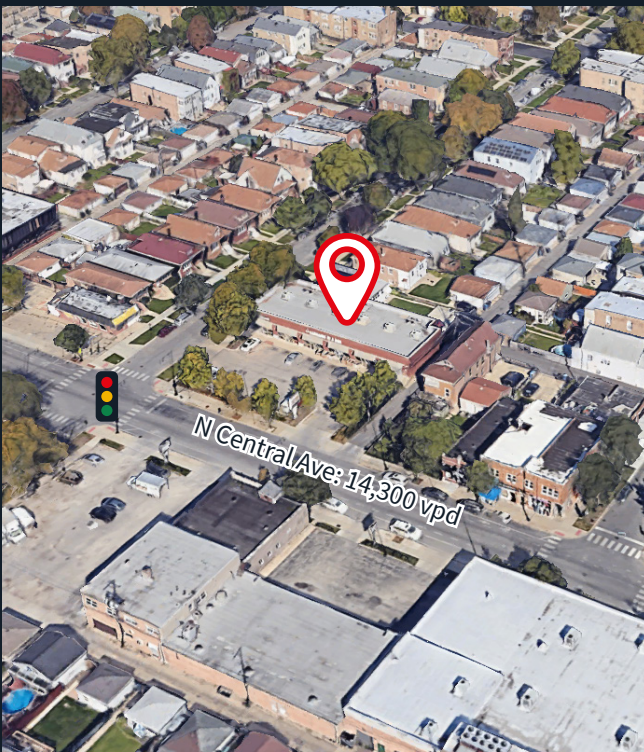
Natalie Belloff

Associate
+1 312 228 2008
natalie.belloff@jll.com



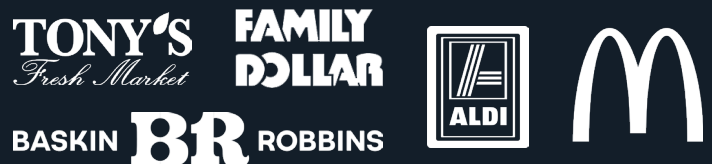
Property overview & demographics

- Optimal location with prime visibility to highly trafficked N Central Ave
- Rarely available urban retail with parking at grade to maximize an easy customer experience with 20 dedicated spaces
- Take advantage of the nearby thriving retailers, including Aldi, Fresh Market, and Tony's Market
- Maximize your potential by tapping into the high population density in the vicinity, enabling you to appeal to a broader range of individuals



Address	2649 N Central Ave Chicago, IL 60639
Size	±5,888 SF
Zone	B-1
Asking rent	Upon request
Status	Vacant
Possession	Immediate

Area retailers



	0.5 miles	1 mile	1.5 miles
Population	18,821	64,119	127,275
Daytime population	12,528	43,339	92,382
Avg household income	\$79,223	\$85,010	\$85,035
Households	12,528	43,339	92,382

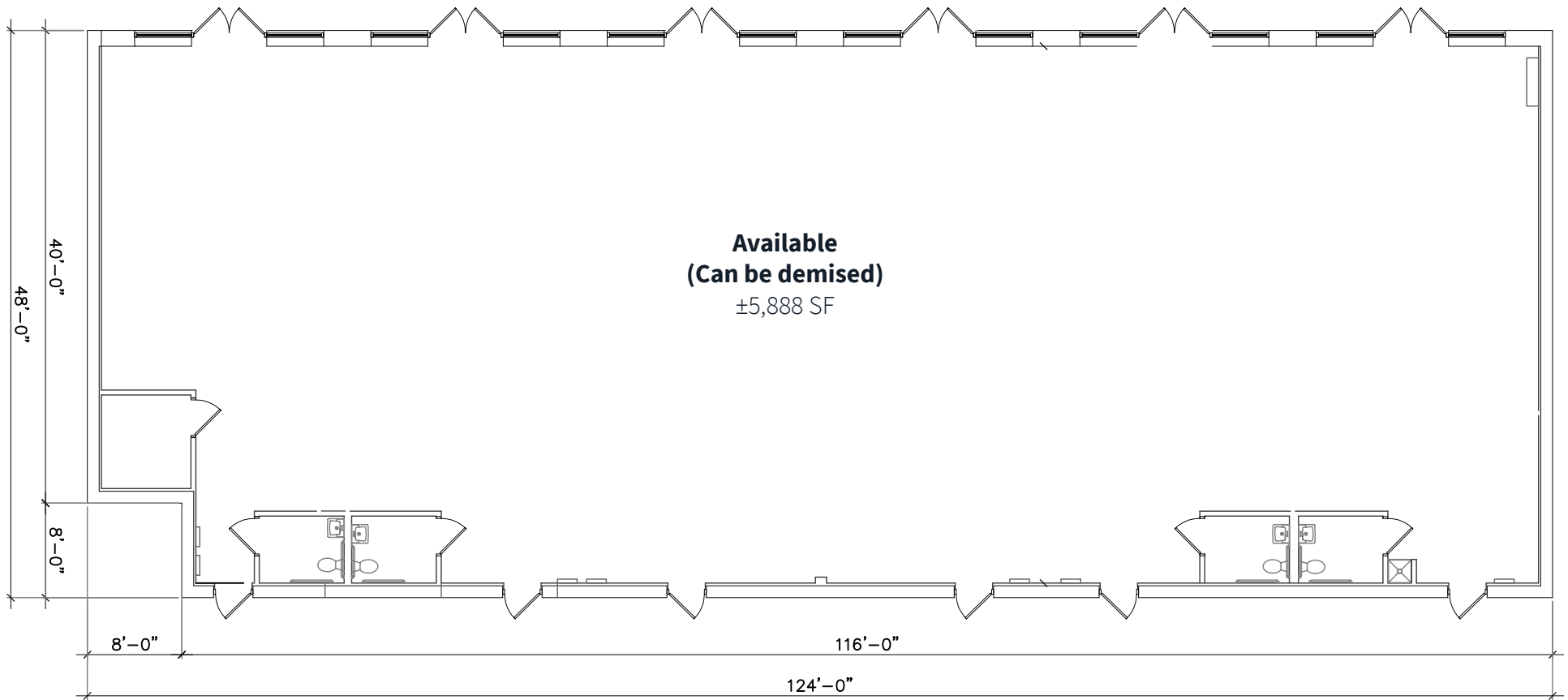


Site plan

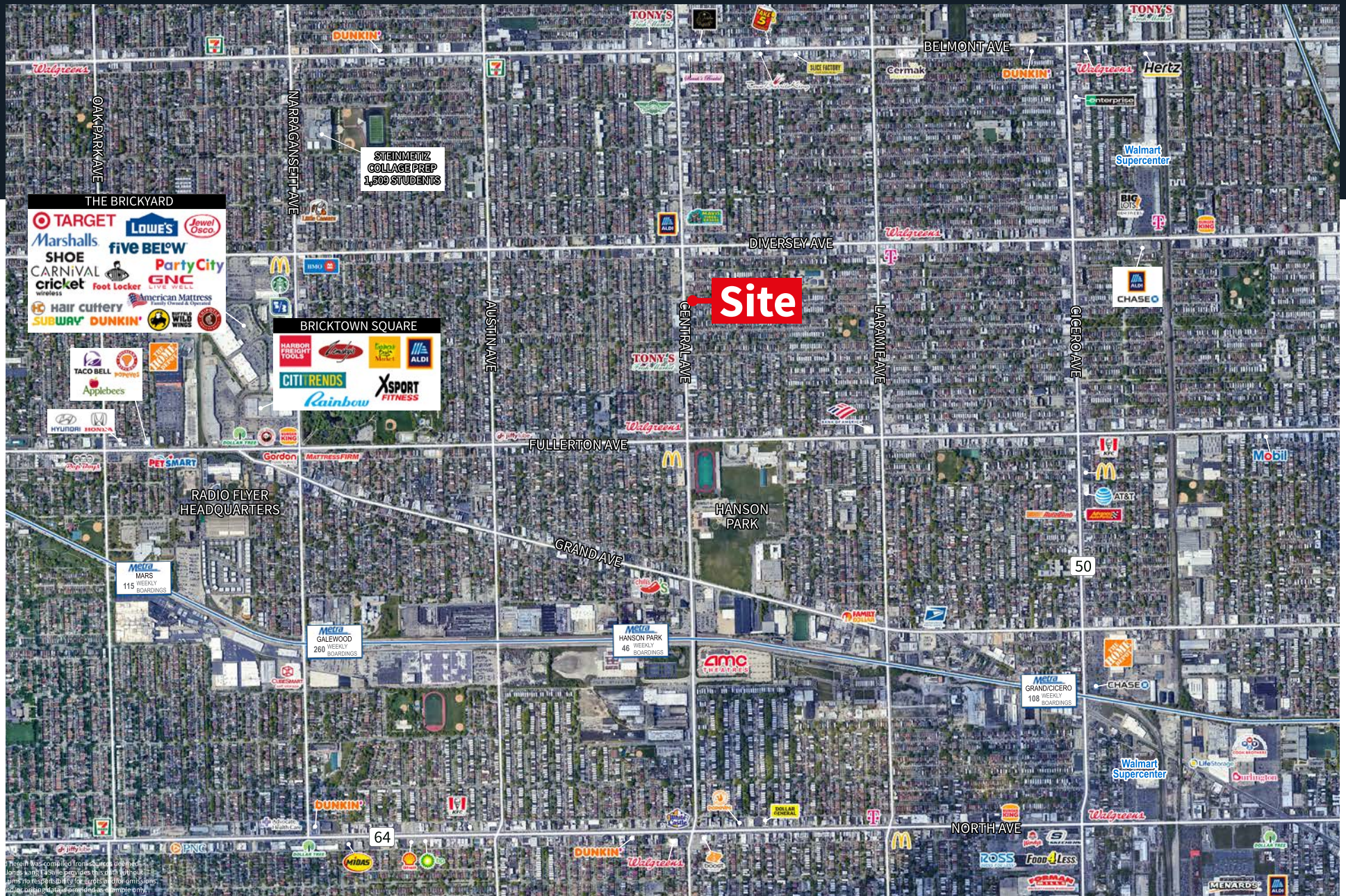
N Central Ave: 14,300 vpd



**Available
(Can be demised)**
±5,888 SF



Retail trade area





Steve Schwartz

Senior Vice President
+1 312 228 2157
steve.schwartz@jll.com

Natalie Belloff

Associate
+1 312 228 2008
natalie.belloff@jll.com