



***Your Name Here***

 **JLL** SEE A BRIGHTER WAY

# For lease

## Andover East Business Center, Building A

Available May 31, 2025

1073 Andover Park E  
Tukwila, WA

### Property specifications

- 5,200 SF total available
- 953 SF office
- 16' clear height
- 2 dock-high overhead doors
- 39/5600 wet sprinkler system
- 100' bay depth
- 20' x 52' column spacing
- 128' truck court
- located on major N/S arterial, connecting I-405 & immediate access to I-5
- Just minutes from SeaTac Int. Airport
- Close to Southcenter Mall & abundant amenities

**Les Boudwin, SIOR**  
Managing Director  
les.boudwin@jll.com  
+1 206 679 6393

**Scott Carter**  
Managing Director  
scott.carter@jll.com  
+1 425 761 5880

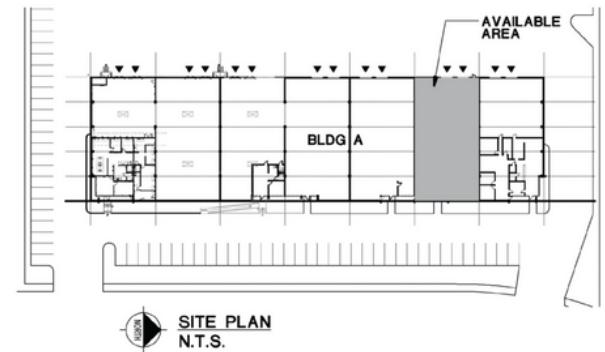
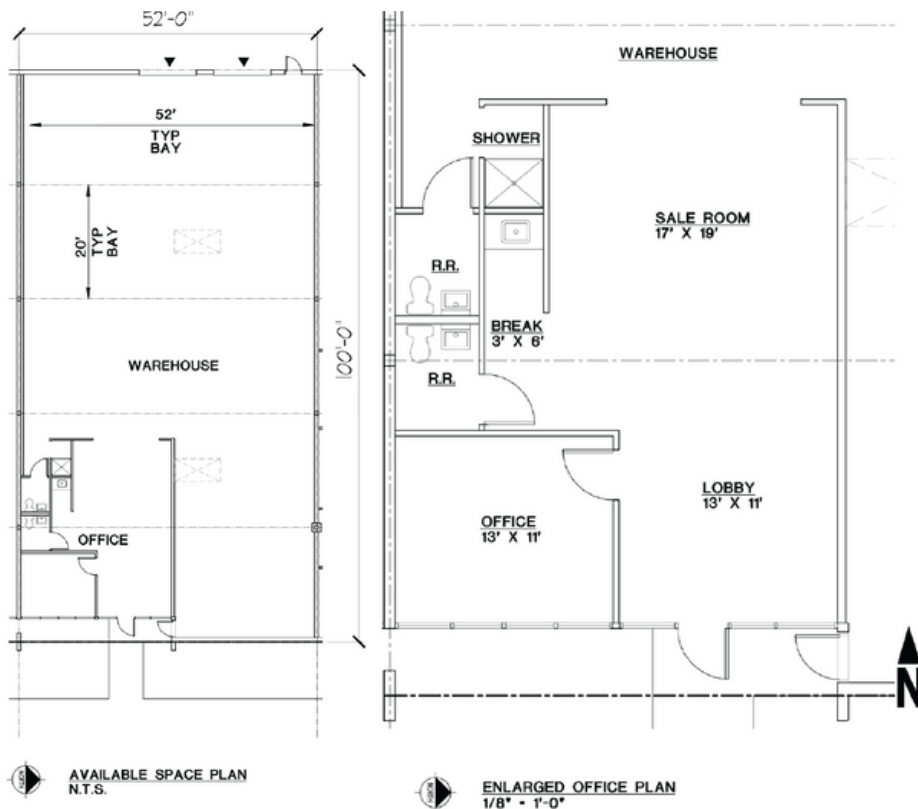
jll.com

Jones Lang LaSalle Brokerage, Inc.

# For lease

## Andover East Business Center, Building A

1073 Andover Park E, Tukwila, WA



### AVAILABLE BUILDING AREA

953 SQ. FT. OFFICE

4,247 SQ. FT. WAREHOUSE

5,200 SQ. FT. TOTAL

### LEGEND

▼ DOCK-HIGH OVERHEAD DOORS

● RAIL DOORS

**Les Boudwin, SIOR**  
les.boudwin@jll.com  
+1 206 679 6393

**Scott Carter**  
scott.carter@jll.com  
+1 425 761 5880

jll.com  
Jones Lang LaSalle Brokerage, Inc.



**Andover East Business  
Center, Building A**