

# THE DISTRICT OF NEW HOPE

LAND AVAILABLE FOR PURCHASE, LEASE or  
BTS ANCHOR SPACE, RETAIL & PAD SITES  
AVAILABLE

183A & New Hope  
Cedar Park

Scottsdale Dr.

LOT 8  
7.66 ACRES

LOT 3  
12.45 ACRES

LOT 9

LOT 7

LOT 6

LOT 5

County Road 180

183A Frontage Road





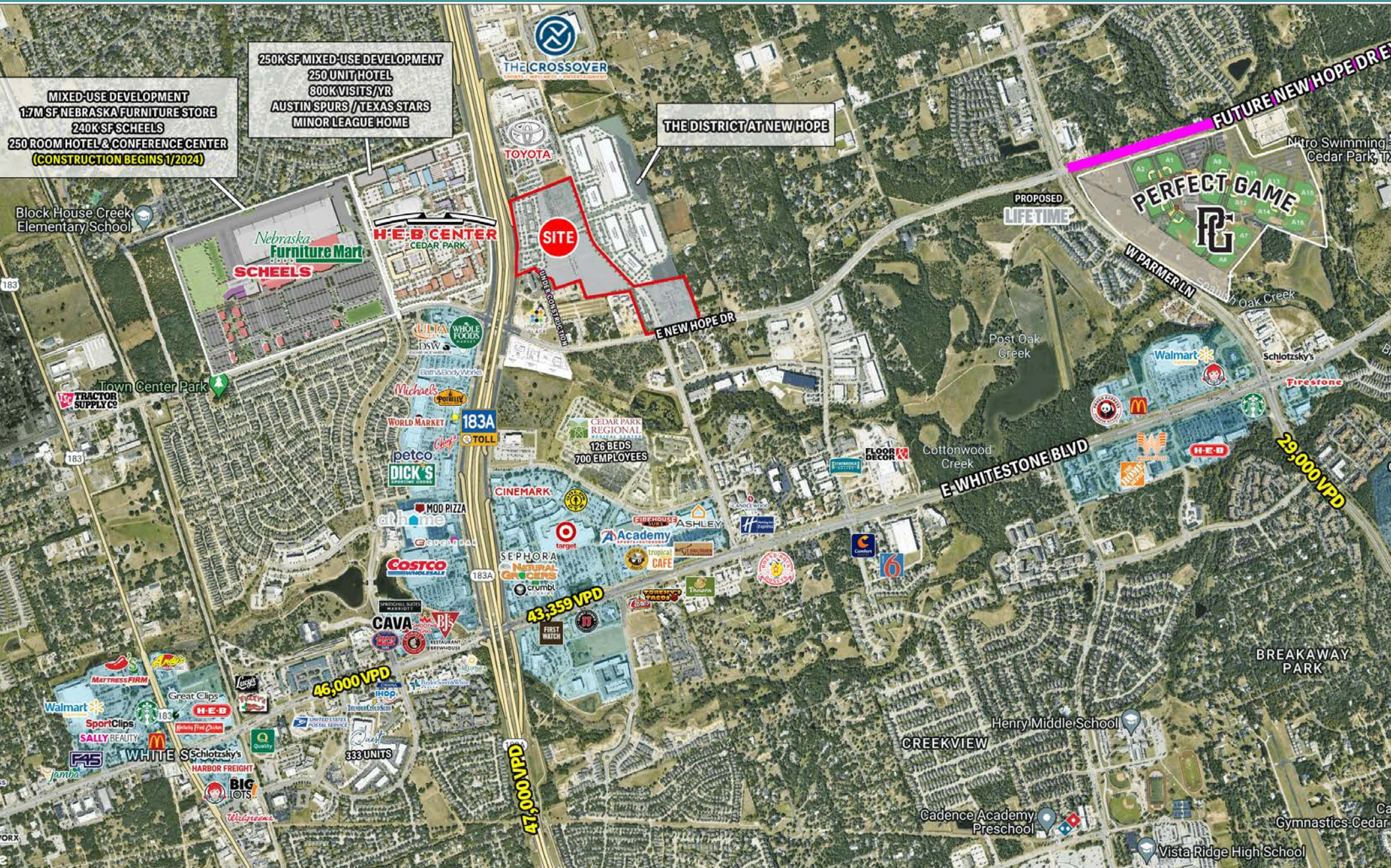


# CEDAR PARK HIGHLIGHTS

- Cedar Park is a vibrant community situated on the northern border of Austin just 17 miles from downtown.
- Cedar Park features 1,000 acres of City-owned parkland and 31 miles of trails. Now the third largest city in the Austin MSA.
- Austin-based restaurants with multiple locations show that Cedar Park stores are often their top performers.



# TRADE AREA





# PROPOSED SITE PLAN



# PROPOSED 183A SITE PLAN







## CONTACT

TRAVIS ROBERTSON

Executive Vice President

+1 512 861 3415

travis.robertson@jll.com

## THE DISTRICT OF NEW HOPE



Although information has been obtained from sources deemed reliable, neither Owner nor JLL makes any guaran-tees, warranties or representations, express or implied, as to the completeness or accuracy as to the information con-tained herein. Any projections, opinions, assumptions or es-timates used are for example only. There may be differences between projected and actual results, and those differences may be material. The Property may be withdrawn without notice. Neither Owner nor JLL accepts any liability for any loss or damage suffered by any party resulting from reliance on this information. If the recipient of this information has signed a confidentiality agreement regarding this matter, this information is subject to the terms of that agreement.  
©2025 Jones Lang LaSalle Americas, Inc. All rights reserved.