

# For lease

**1300 Grant Avenue  
Wilmington, DE 19806**

Office Suites Available in the Highlands

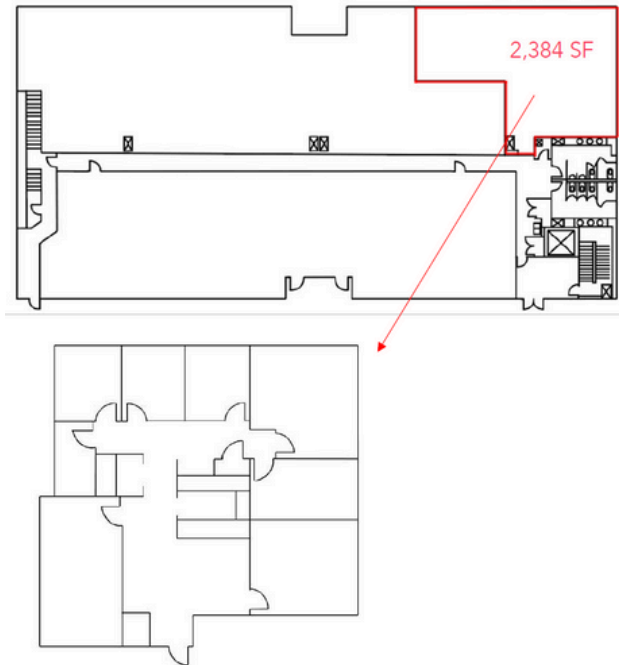


## Property floorplans

### Suite 100

**2,384 SF**

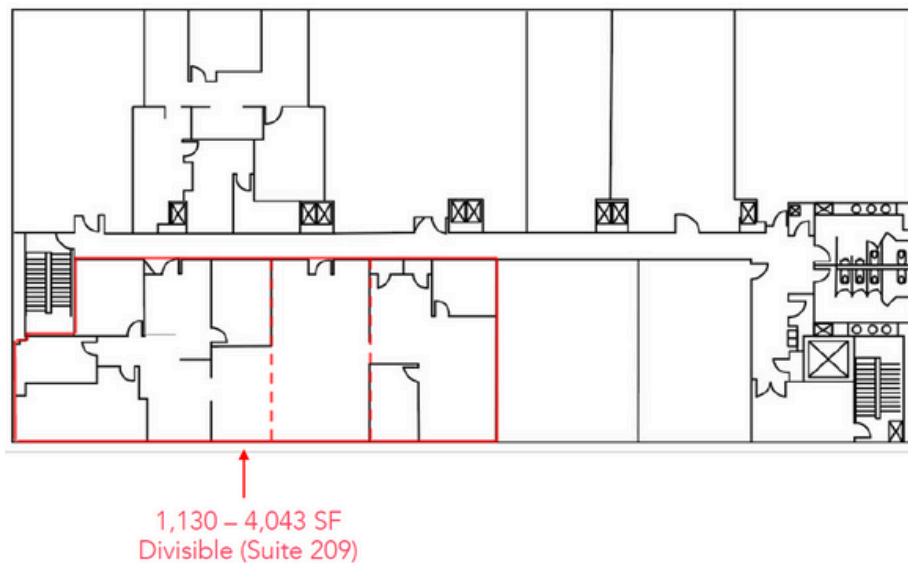
- Exposure to main lobby.
- Turn-key suite includes six private offices and support areas.



### Suite 209

**4,043 SF**

- Customizable office can be demised to ~1,100 SF



## Location highlights

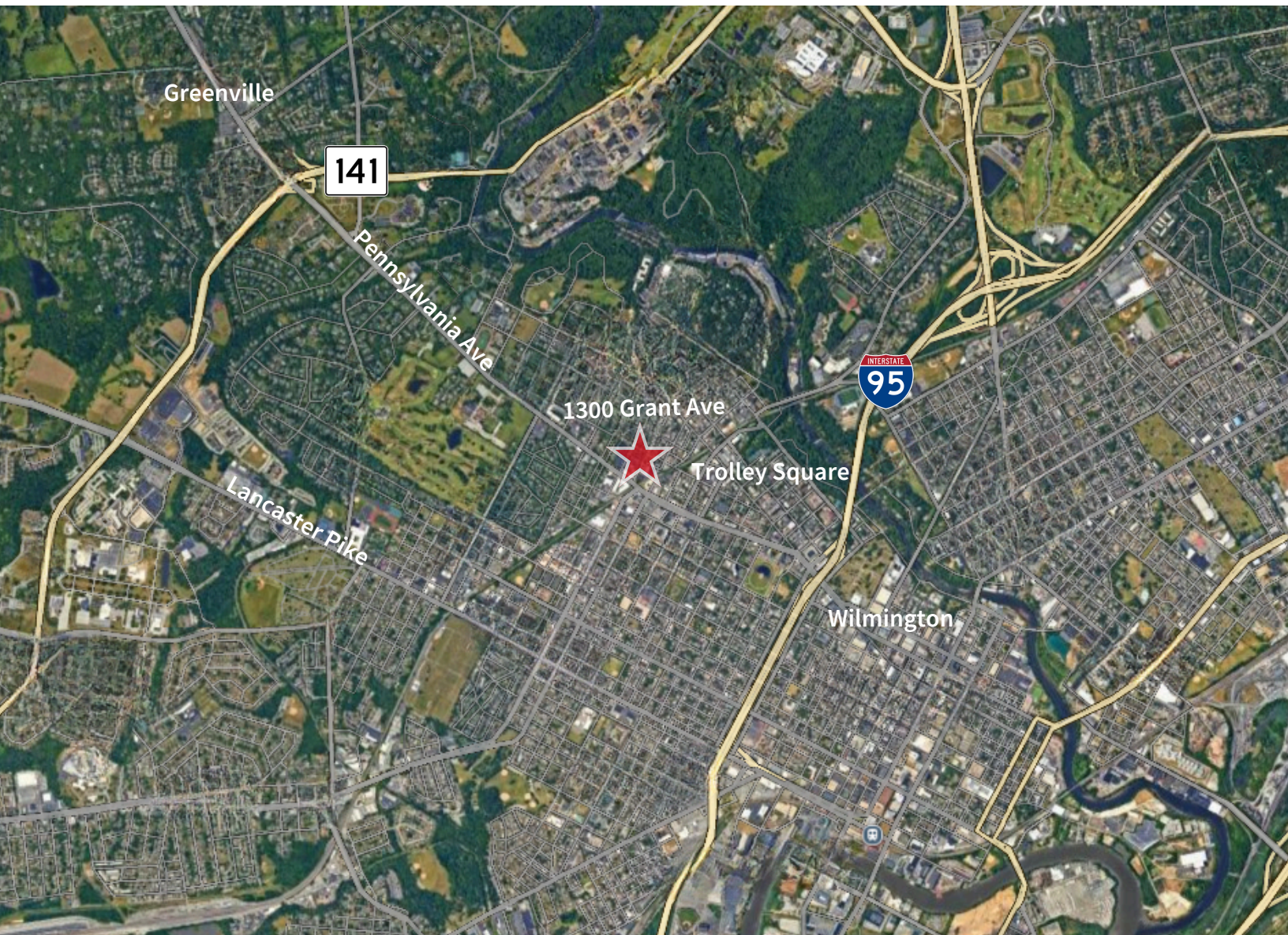
- Walkable amenities include Walgreens, restaurants, and banking.
- Free surface parking available





## Location highlights

- Prominent location adjacent minutes from the Wilmington CBD and Greenville.



**Blaise Fletcher**  
Managing Director  
M +1 302 356 2861  
[blaise.fletcherl@jll.com](mailto:blaise.fletcherl@jll.com)

**Jamie Vari**  
Executive Vice President  
M +1 302 356 2862  
[jamie.vari@jll.com](mailto:jamie.vari@jll.com)

**Jones Lang LaSalle Brokerage, Inc.**  
1011 Centre Road, Suite 117  
Wilmington, DE 19805  
**O +1 302 356 2858**