 JLL SEE A BRIGHTER WAY

For lease

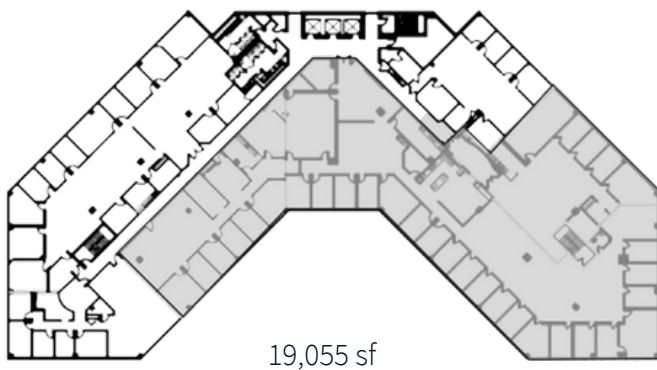
517 Route 1 S, Iselin NJ
Up to 19,055 sf available



4th floor

Three separate but contiguous suites divisible to 3,899 sf with the ability to add an additional $\pm 2,000$ sf. Furniture available.

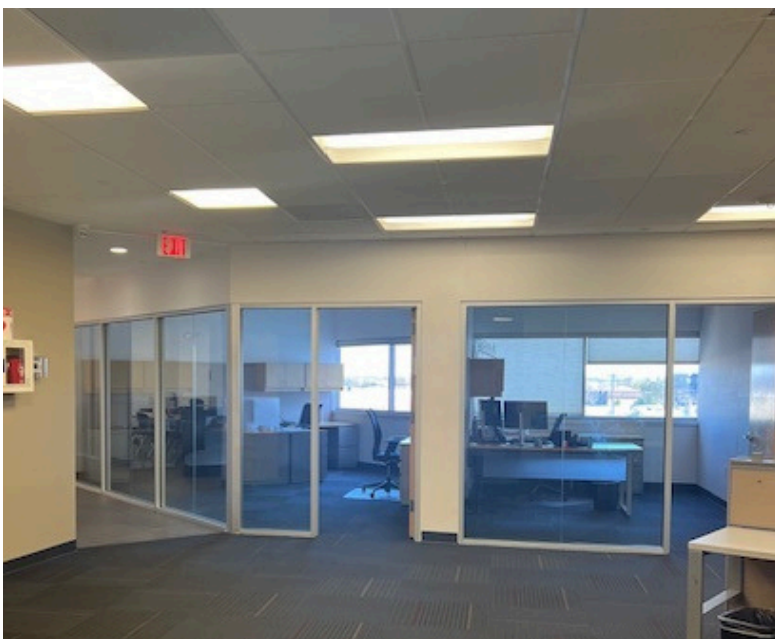
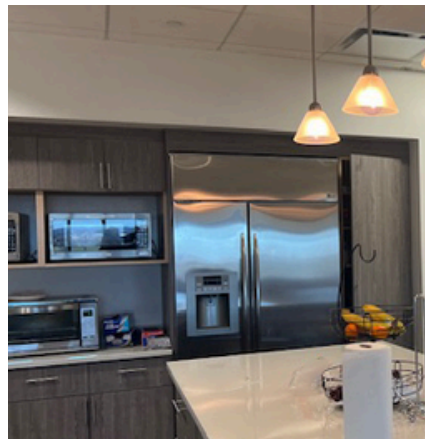
Floorplan



Building Features

- On-site dining
- Connected to the Delta Hotel by Marriott with conferencing facilities
- View of NYC skyline
- 2-story atrium
- Close proximity to Metropark train station with NJ Transit and Amtrak services, and walking distance to ample restaurants

Interior



Map

Dining, shopping, and transportation all nearby





About JLL

For over 200 years, JLL (NYSE: JLL), a leading global commercial real estate and investment management company, has helped clients buy, build, occupy, manage and invest in a variety of commercial, industrial, hotel, residential and retail properties. A Fortune 500® company with annual revenue of \$20.9 billion and operations in over 80 countries around the world, our more than 103,000 employees bring the power of a global platform combined with local expertise. Driven by our purpose to shape the future of real estate for a better world, we help our clients, people and communities SEE A BRIGHTER WAYSM. JLL is the brand name, and a registered trademark, of Jones Lang LaSalle Incorporated. For further information, visit jll.com.

Erin Moran
+1 732 673 0773
erin.moran@jll.com

Vinny DiMeglio
+1 609 439 8926
vinny.dimeglio@jll.com

jll.com

Jones Lang LaSalle Americas, Inc.

Although information has been obtained from sources deemed reliable, neither Owner nor JLL makes any guarantees, warranties or representations, express or implied, as to the completeness or accuracy as to the information contained herein. Any projections, opinions, assumptions or estimates used are for example only. There may be differences between projected and actual results, and those differences may be material. The Property may be withdrawn without notice. Neither Owner nor JLL accepts any liability for any loss or damage suffered by any party resulting from reliance on this information. If the recipient of this information has signed a confidentiality agreement regarding this matter, this information is subject to the terms of that agreement. © 2023 Jones Lang LaSalle IP, Inc. All rights reserved.