

# FIFT N 50

17TH STREET







**CLASS A OFFICE**



**138,000+ SF**



**SIX STORIES**



**YEAR BUILT: 2000**



**SLAB-TO-SLAB 12'  
CEILING HEIGHT**



**BALCONY SPACES  
FLOORS 3-6**



**SECURE PARKING  
GARAGE**



**1.2 / 1,000 SF  
PARKING RATIO**  
4 LEVELS OF UNDER-  
GROUND PARKING



**EASY ACCESS  
TO TRANSIT**



**BIKE PARKING**

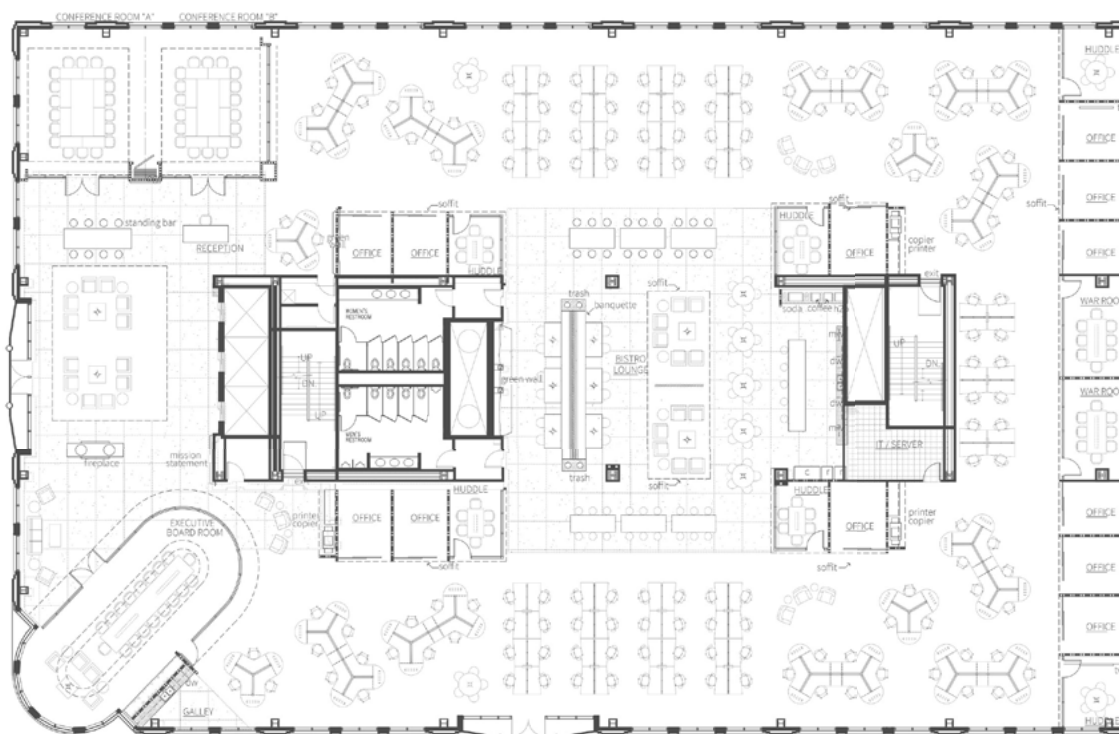


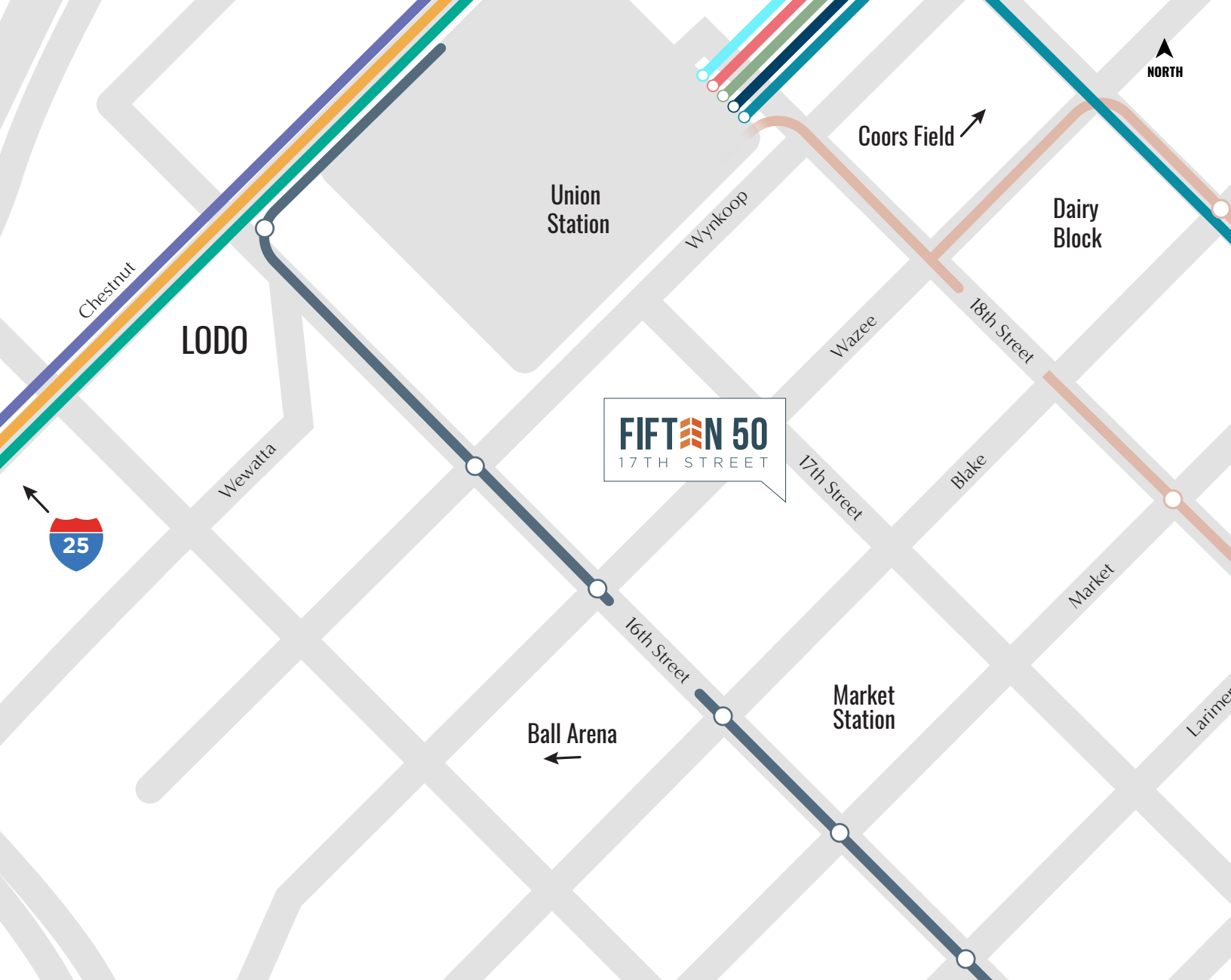
**WELL  
CERTIFIED**  
HEALTH-SAFETY  
RATED 2022











● FREE MALLRIDE      ● FREE METRORIDE

● UNION STATION TO WHEAT RIDGE • WARD  
 ● UNION STATION TO LITTLETON • MINERAL  
 ● UNION STATION TO RIDGEGATE PARKWAY

● UNION STATION TO JEFFCO GOVT CNTR • GOLDEN  
 ● UNION STATION TO DENVER AIRPORT  
 ● UNION STATION TO EASTLAKE • 124TH

● DENVER TO BOULDER  
 ● UNION STATION TO WESTMINSTER

## COVETED LOCATION

Within one block to Denver Union Station, 1550 17th Street offers a prestigious 17th Street address in the heart of LoDo. The boutique building is known as one of Lodo's premier office buildings with the appeal and authentic finish of a historic landmark and the efficiency and modern amenities of a new, state-of-the-art office building. The building is surrounded by downtown Denver's best amenities and offers effortless access to transit.







**1550 17TH STREET OFFERS  
A PRESTIGIOUS 17TH STREET  
ADDRESS IN THE HEART OF LODO**

**[CLICK HERE FOR 360 DEGREE VIEW](#)**





# FIFT N 50

## 17TH STREET

James Roupp  
+1 303 217 7947  
James.Roupp@jll.com

Michael Crane  
+1 303 260 6533  
Michael.Crane@jll.com



Although information has been obtained from sources deemed reliable, neither Owner nor JLL makes any guarantees, warranties or representations, express or implied, as to the completeness or accuracy as to the information contained herein. Any projections, opinions, assumptions or estimates used are for example only. There may be differences between projected and actual results, and those differences may be material. The Property may be withdrawn without notice. Neither Owner nor JLL accepts any liability for any loss or damage suffered by any party resulting from reliance on this information. If the recipient of this information has signed a confidentiality agreement regarding this matter, this information is subject to the terms of that agreement. ©2024 Jones Lang LaSalle IP, Inc. All rights reserved.