



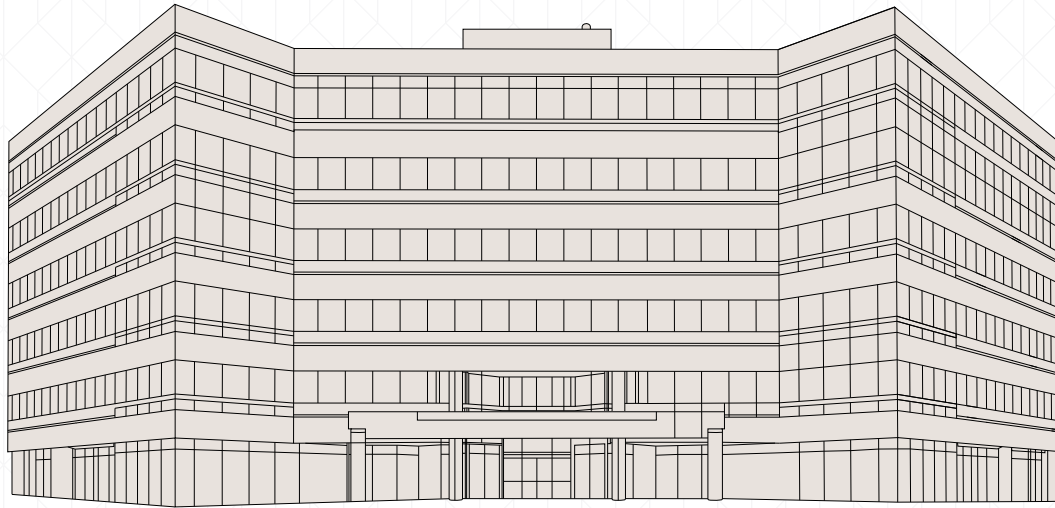
Full Building HQ Opportunity

±18,000 – 110,000 RSF

**101 Lincoln Centre Drive
Foster City, CA**



Jones Lang LaSalle Brokerage Inc. Real Estate License # 01856260



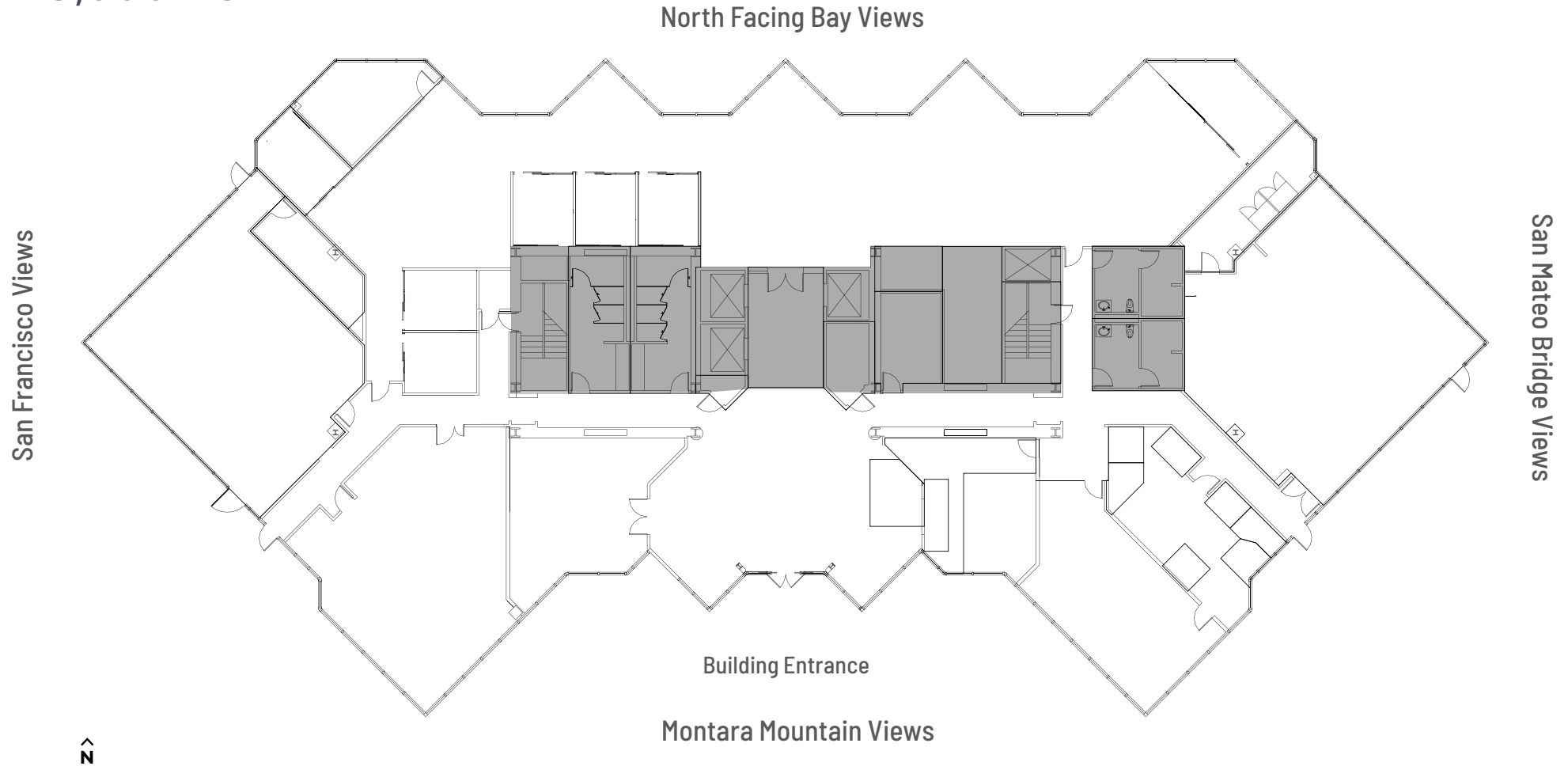
Property Highlights

- ↗ Flexible Terms
- ✓ TI's Available
- 👁 Bay Views
- 🏠 New Lobby
- 📅 Building Signage
- 🅑 Ample Surface Parking
- 📍 Bay Trail Access
- 🚌 Commuter Shuttle
- 📖 Lobby Rennovation Underway
- ✍ State-of-the-Art Amenities Underway
- 🍽 On-Site Food Service
- 🏋 Fitness Center
- 🚿 Locker Rooms & Showers
- 🖨 Conference Facility

Floor 1

±18,000 RSF

TI's Available



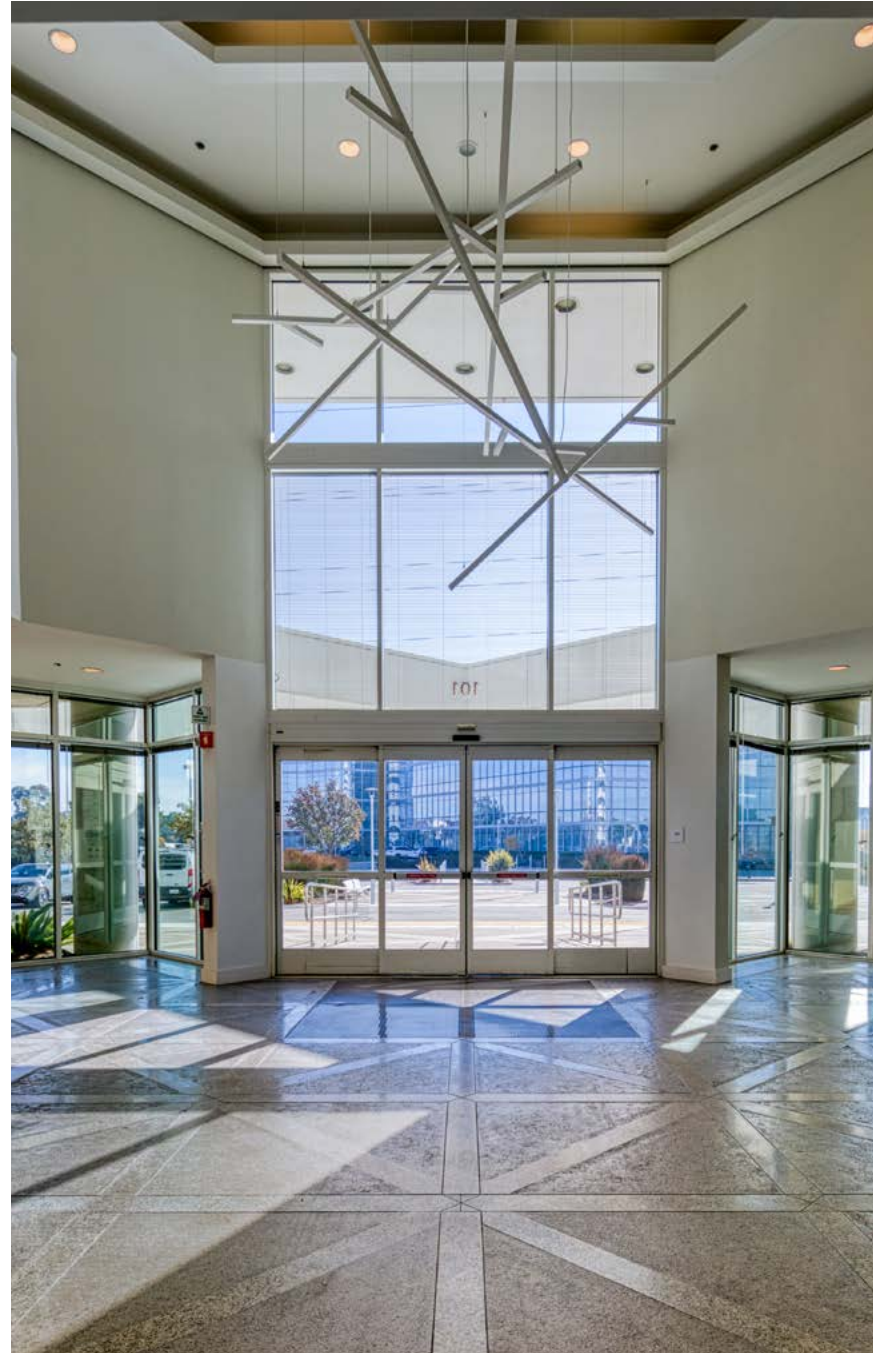
Floor Highlights

Lobby Renovations Underway
Conference Facility
On-Site Food Service

IT Rooms
Server Rooms

Upcoming Updated Amenities:
Fitness Center
Locker Rooms and Showers

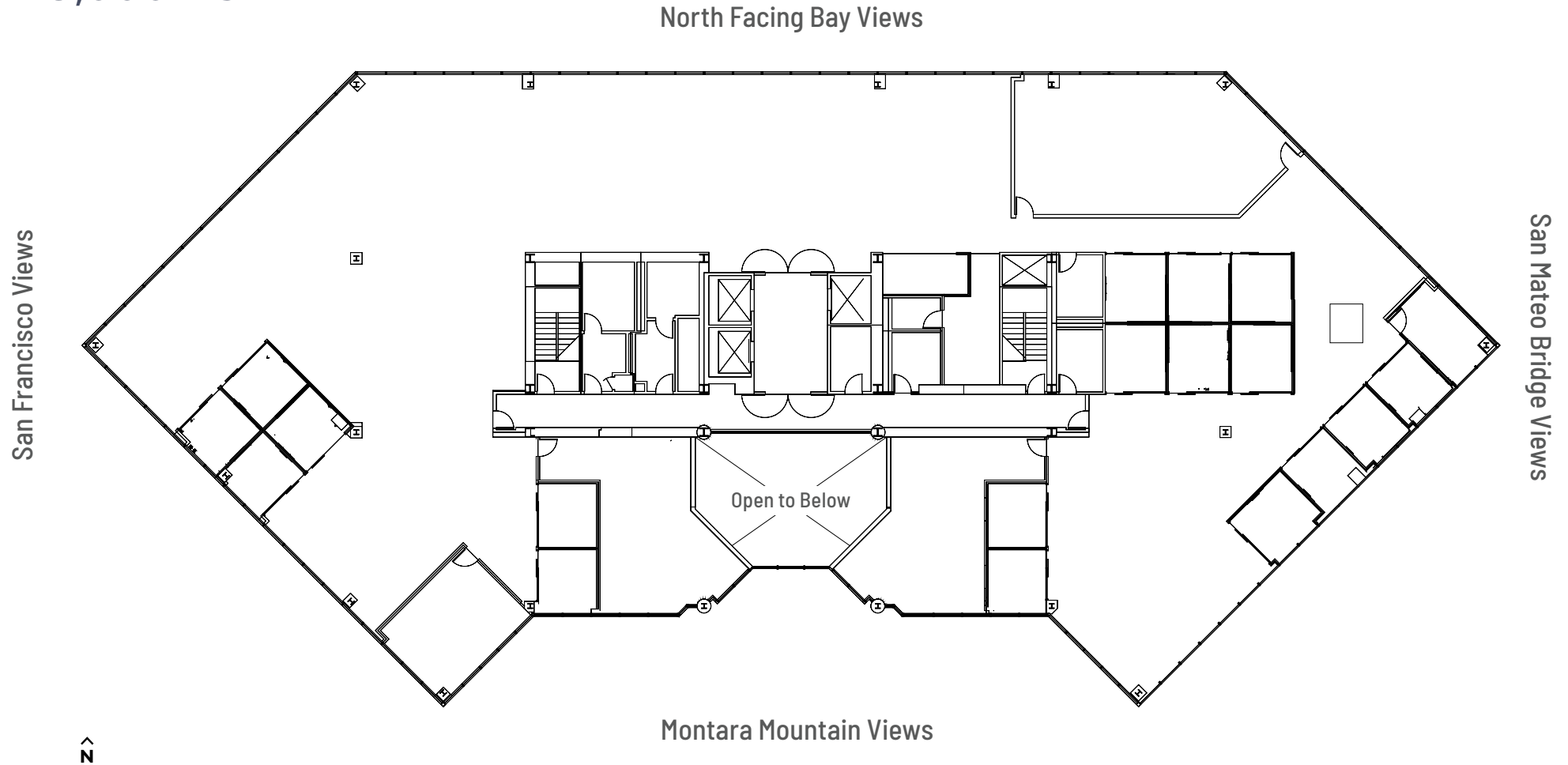
Floor 1



Floor 2

±18,000 RSF

TI's Available



Floor Highlights

2 Board Rooms
2 Meeting Rooms
18 Private Offices

Kitchenette
IT Storage
Copy Room

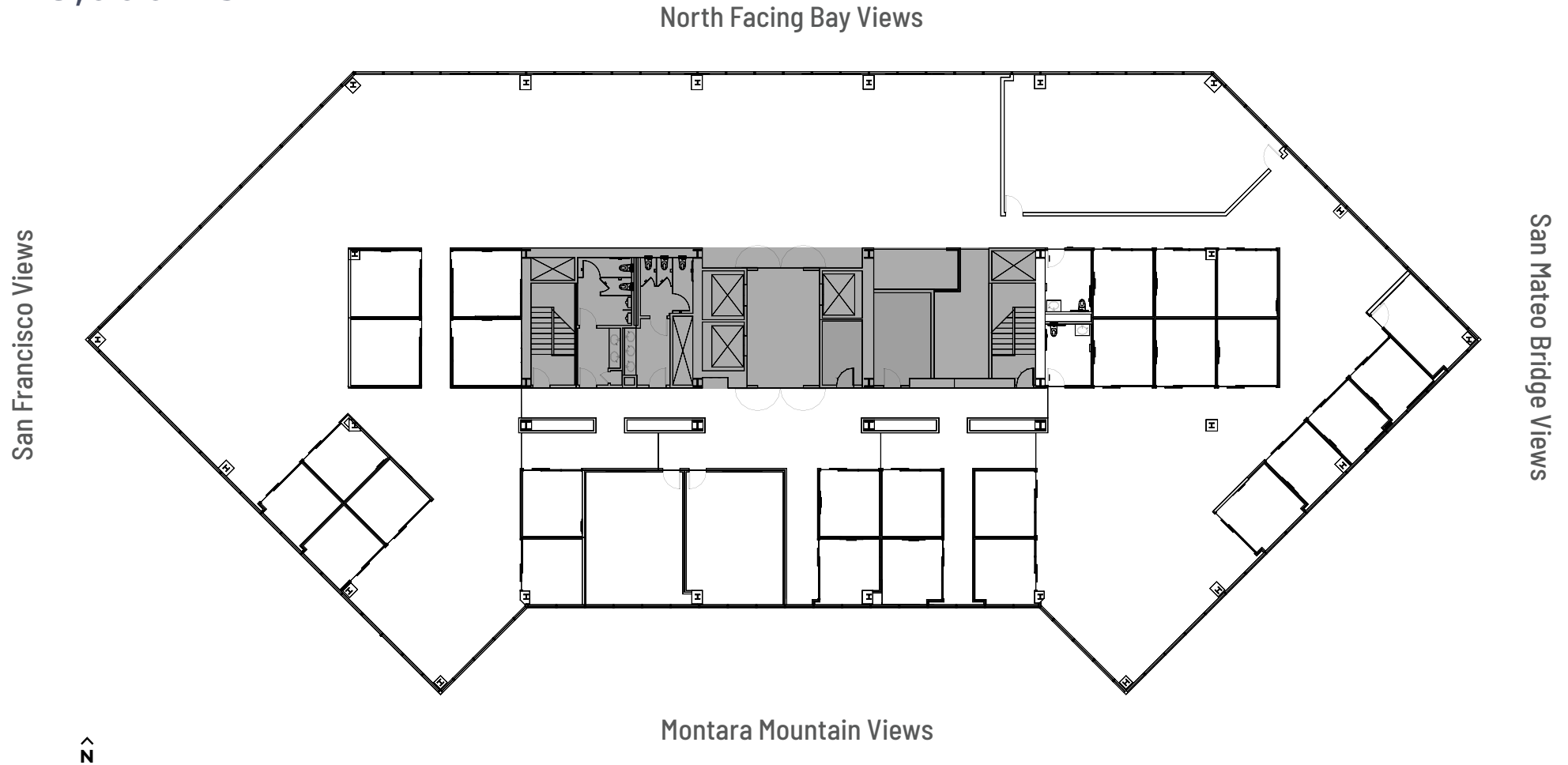
Floor 2



Floor 3

±18,000 RSF

TI's Available

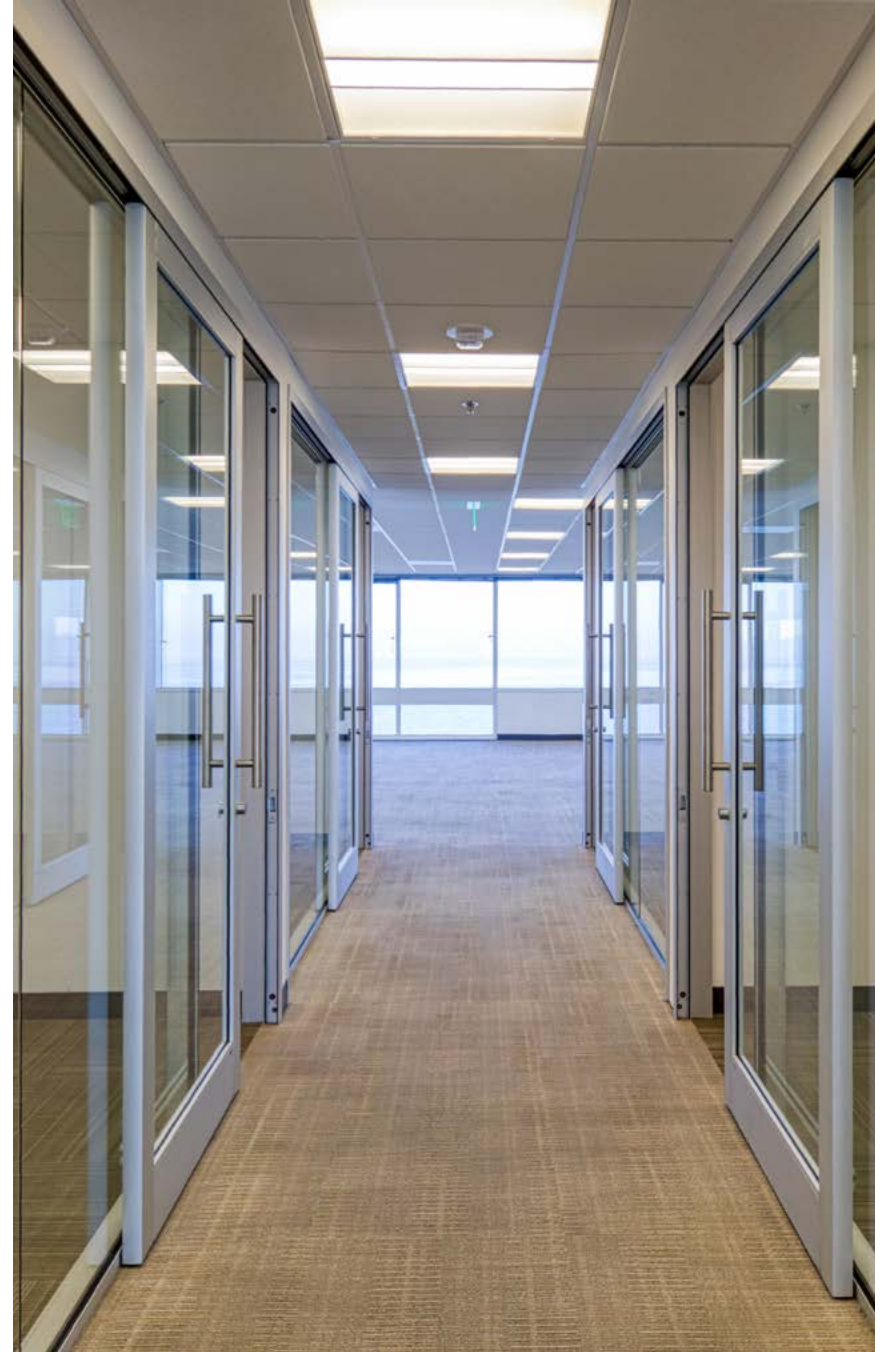


Floor Highlights

2 Board Rooms
2 Meeting Rooms
26 Private Offices

Kitchenette
Copy Room

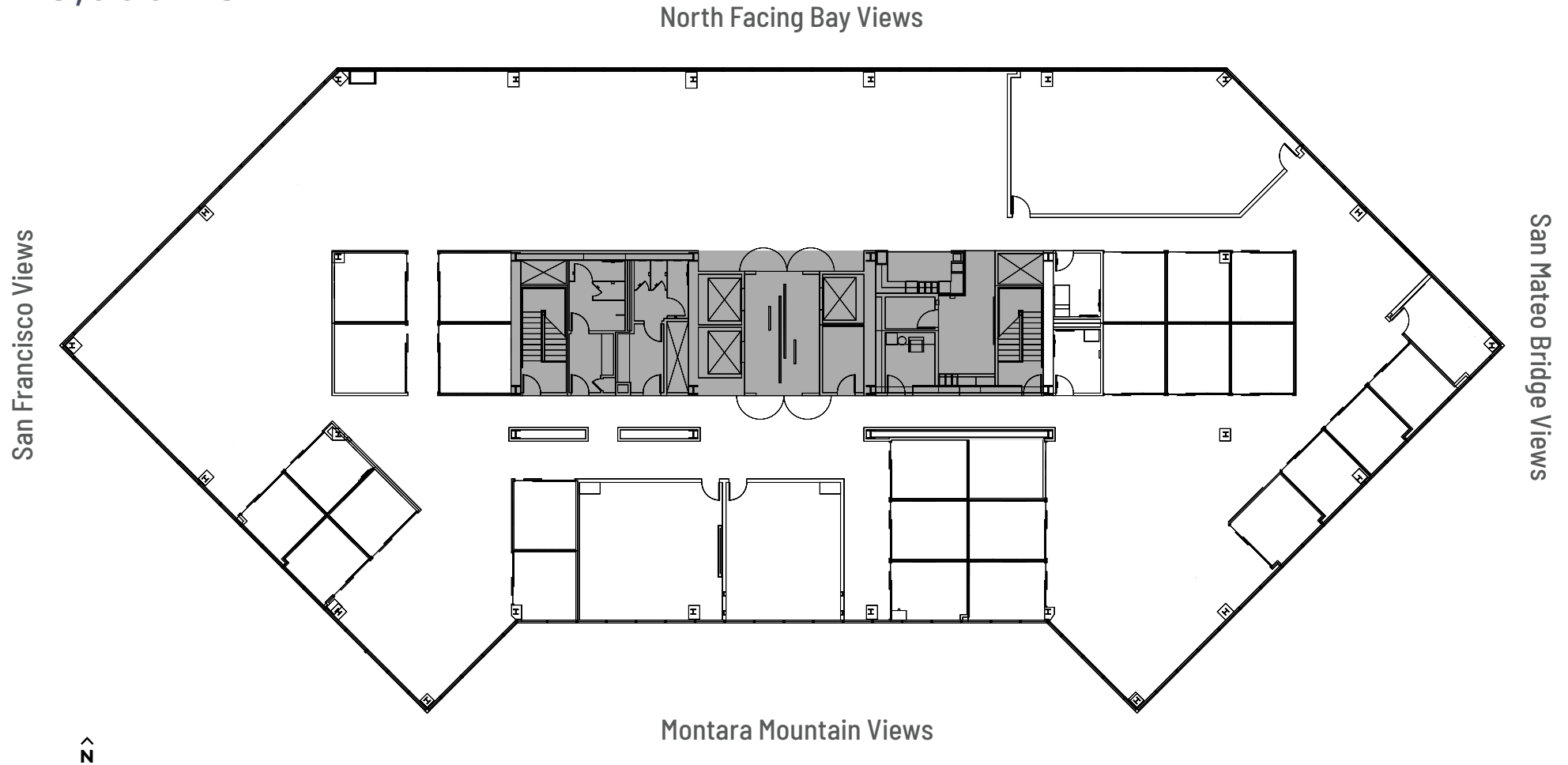
Floor 3



Floor 4

±18,000 RSF

TI's Available



Floor Highlights

2 Board Rooms
6 Meeting Rooms
21 Private Offices

Kitchenette
Copy Room
Mother's Room

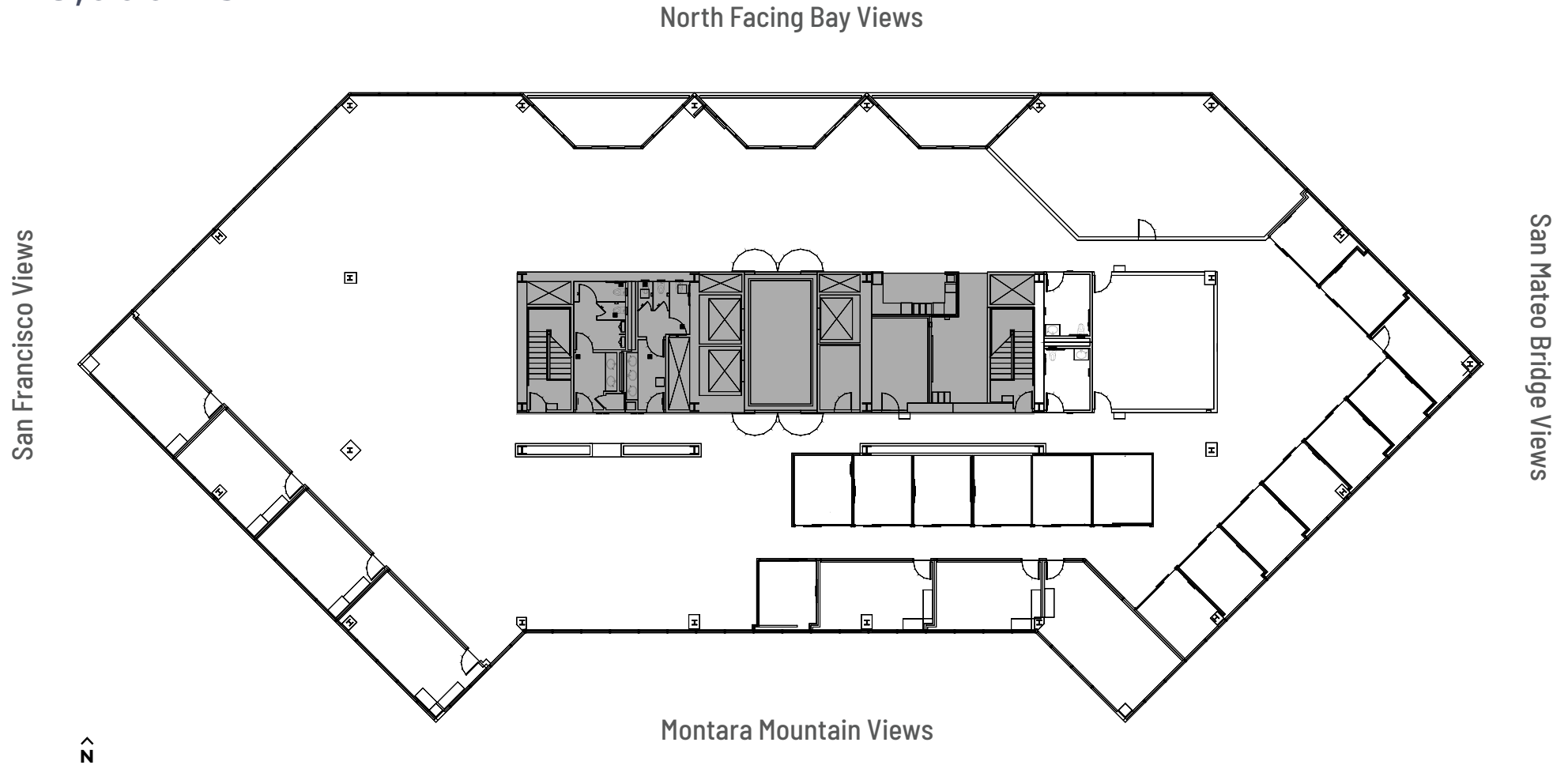
Floor 4



Floor 5

±18,000 RSF

TI's Available



Floor Highlights

7 Meeting Rooms

16 Private Offices

3 Outdoor Balconies

Kitchenette

Copy Room

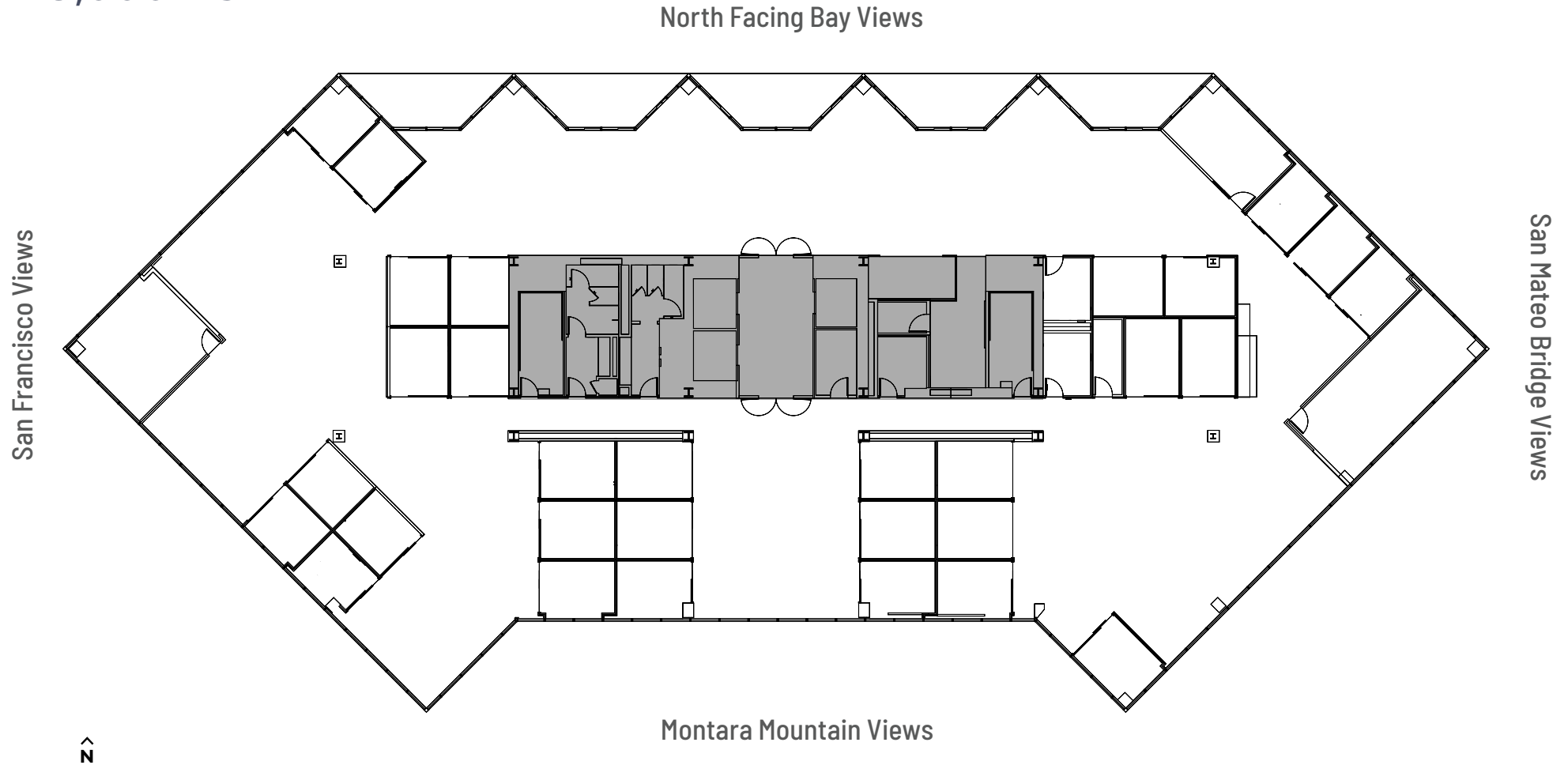
Floor 5



Floor 6

±18,000 RSF

TI's Available



Floor Highlights

2 Board Rooms
2 Meeting Rooms
29 Private Offices

5 Outdoor Balconies
Kitchenette
Copy Room

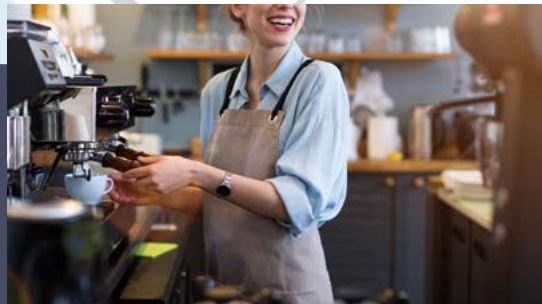
Floor 6



Area Amenitites



BridgePointe Shopping Center



Commuter Map

Millbrae Caltrain/Bart Schedule

Hillsdale Caltrain Schedule





Clarke Funkhouser

Managing Director
2042 480 650 +1
clarke.funkhouser@jll.com
CA Lic # 01252763

Gary Boitano

Managing Director
2122 401 650 +1
gary.boitano@cushwake.com
CA Lic # 01902693

Sonia Ayala, RPA®

Vice President
+1 408 955 1437
sayala@orchardcommercial.com
CA Lic # 01510377



Although information has been obtained from sources deemed reliable, neither Owner nor JLL makes any guarantees, warranties or representations, express or implied, as to the completeness or accuracy as to the information contained herein. Any projections, opinions, assumptions or estimates used are for example only. There may be differences between projected and actual results, and those differences may be material. The Property may be withdrawn without notice. Neither Owner nor JLL accepts any liability for any loss or damage suffered by any party resulting from reliance on this information. If the recipient of this information has signed a confidentiality agreement regarding this matter, this information is subject to the terms of that agreement.

© 2025 Jones Lang LaSalle IP, Inc. All rights reserved. Jones Lang LaSalle Brokerage, Inc Real Estate License #: 01856260