

130 SUTTER

Envision • Create • Innovate



Matthew Shewey
Senior Managing Director
RE License #01445125
+1 415 395 7255
matt.shewey@am.jll.com

Charlie Hanafin
Vice President
RE License #01996121
+1 415 395 4951
charlie.hanafin@am.jll.com

Dominic Dowling
Senior Associate
RE License #02109572
+1 415 302 0858
dominic.dowling@am.jll.com



Jones Lang LaSalle Brokerage, Inc.
Real Estate License #: 01856260

History

“Many architecture historians consider Hallidie groundbreaking, with some christening it the most important modern building in San Francisco.”

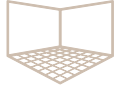
– Curbed, San Francisco

130 Sutter, known as the Hallidie Building, was designed by world famous architect Willis Polk, and completed in 1918. The building features a glass curtain wall, the first of its kind in not only San Francisco, but the rest of the United States, making it a forerunner to such great architectural assets as the Crown Zellerbach, the Lever House, and the Seagrams Building. The curtain wall is hung in front of a steel frame allowing deep penetration of light; and the clarity of the glass wall is enriched by the use of the Victorian Gothic ironwork cornices and balconies masking fire escapes.

Polk originally designed the building for the University of California, and it was dedicated to Andrew S. Hallidie, an early Regent of the University, who is best known for his invention of the cable car. And being such an exemplary piece of architecture, it has earned itself the honor of being a registered national historic landmark, and being featured in virtually every standard American and foreign textbook on commercial architecture.



Building Highlights



Efficient, side-core
floorplates



Highly creative
buildouts



Floor-to-ceiling
window line



Space move-In
ready



Long-time local
ownership



Centrally Located



Confluence of North and South Financial Districts, as well as Union Square



1 Block from Montgomery Street BART



3 Blocks from Transbay Terminal



Near Abundance of Dining, Hospitality, and Shops

130 SUTTER



Floor plan

Suite 200 | 12,293 RSF



Available now



Creative open plan full floor



High ceilings



4 large boardrooms and 3 large conference rooms



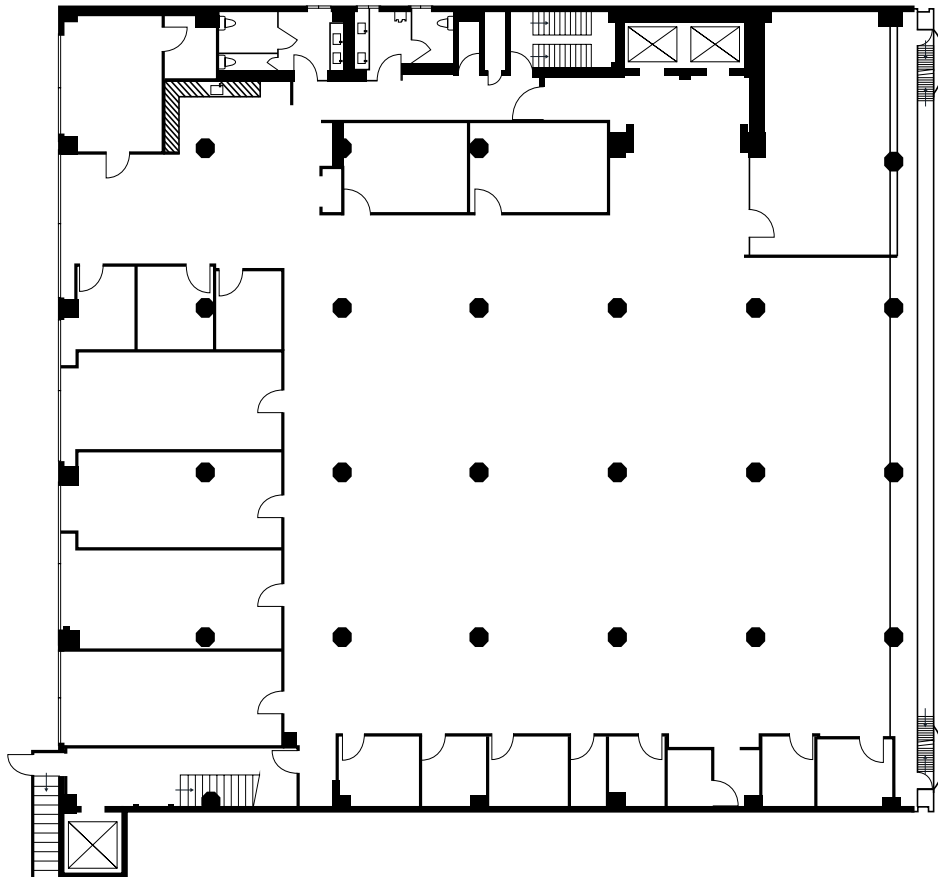
Open kitchen



10 meeting rooms/private offices



Large storage rooms



Matthew Shewey

Senior Managing Director
RE License #01445125
+1 415 395 7255
matt.shewey@am.jll.com

Charlie Hanafin

Vice President
RE License #01996121
+1 415 395 4951
charlie.hanafin@am.jll.com

Dominic Dowling

Senior Associate
RE License #02109572
+1 415 302 0858
dominic.dowling@am.jll.com



Jones Lang LaSalle Brokerage, Inc.
Real Estate License #: 01856260

Floor plan

Suite 300 | 11,500 RSF



Available now



Fully furnished plug-and-play opportunity



High ceilings



53 workstations



Full kitchen and break room



2 large conference rooms
2 medium conference rooms



File/copy room



Stunning window-line with natural light



Matthew Shewey

Senior Managing Director
RE License #01445125
+1 415 395 7255
matt.shewey@am.jll.com

Charlie Hanafin

Vice President
RE License #01996121
+1 415 395 4951
charlie.hanafin@am.jll.com

Dominic Dowling

Senior Associate
RE License #02109572
+1 415 302 0858
dominic.dowling@am.jll.com



Jones Lang LaSalle Brokerage, Inc.
Real Estate License #: 01856260

GALLERY

Suite 300 | 11,500 RSF



Floor plan

Suite 400 | 12,125 RSF



Available now



Highly creative full floor



Fully furnished



12 meeting rooms



1 boardroom



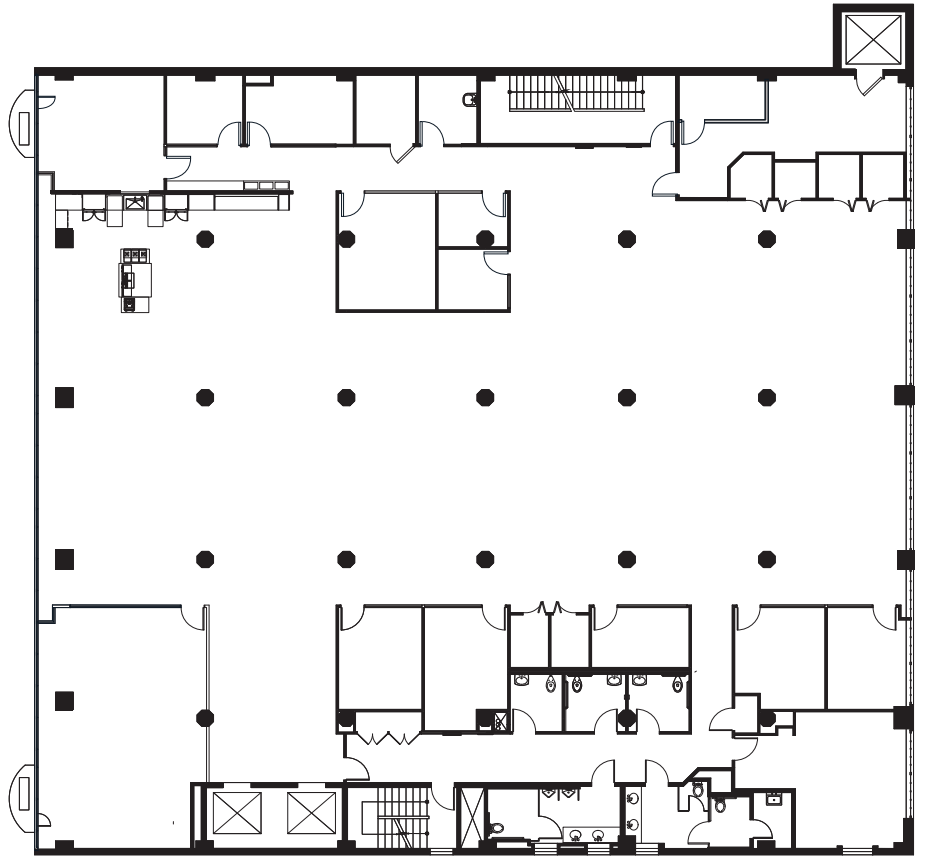
6 phone rooms



Mother's room



Exposed ceiling



Matthew Shewey

Senior Managing Director
RE License #01445125
+1 415 395 7255
matt.shewey@am.jll.com

Charlie Hanafin

Vice President
RE License #01996121
+1 415 395 4951
charlie.hanafin@am.jll.com

Dominic Dowling

Senior Associate
RE License #02109572
+1 415 302 0858
dominic.dowling@am.jll.com



Jones Lang LaSalle Brokerage, Inc.
Real Estate License #: 01856260

GALLERY

Suite 400 | 12,125 RSF



Floor plan

Suite 600 | 6,538 RSF



Available now



High ceilings



Open space



Kitchen



Couple of conference/
meeting rooms



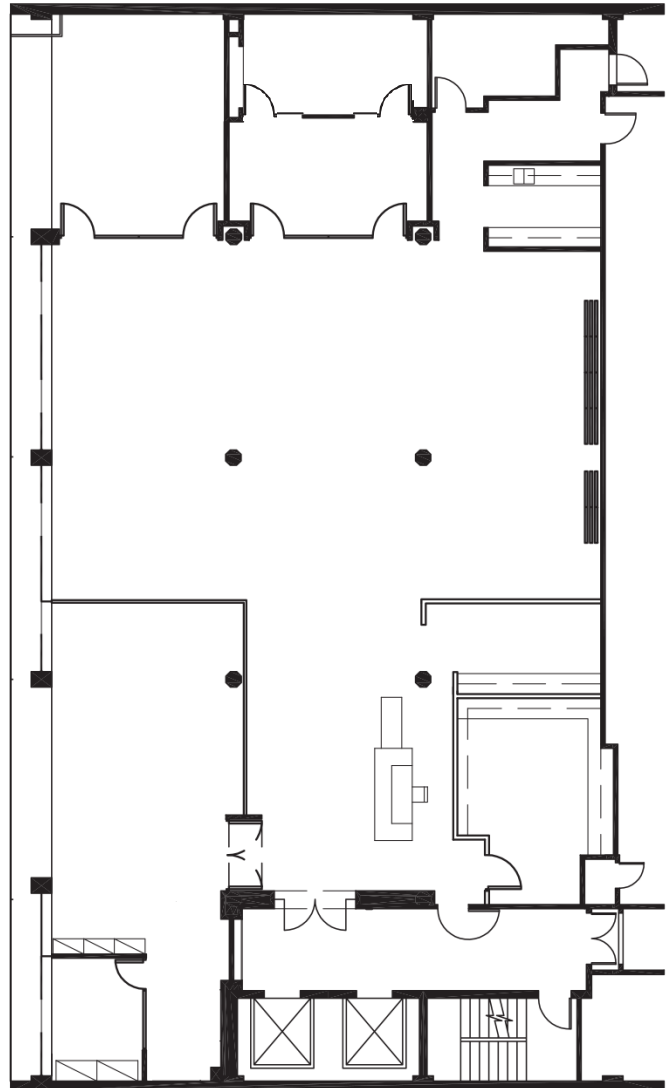
File/copy room



Reception area



Stunning window-line
with natural light



Matthew Shewey

Senior Managing Director
RE License #01445125
+1 415 395 7255
matt.shewey@am.jll.com

Charlie Hanafin

Vice President
RE License #01996121
+1 415 395 4951
charlie.hanafin@am.jll.com

Dominic Dowling

Senior Associate
RE License #02109572
+1 415 302 0858
dominic.dowling@am.jll.com



Jones Lang LaSalle Brokerage, Inc.
Real Estate License #: 01856260

GALLERY

Suite 600 | 6,538 RSF

