

Pavilion III

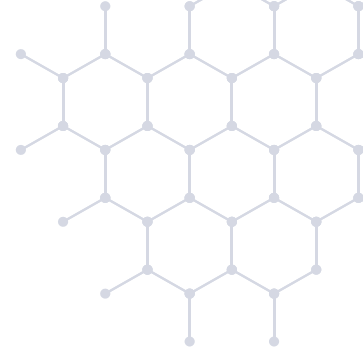
12228 CENTRAL EXPRESSWAY

BRAND NEW CLASS A DEVELOPMENT



Jones Lang LaSalle Brokerage, Inc.

Property HIGHLIGHTS



Pavilion III Move-In Ready



11,266 RSF available



Brand new construction



Tenant Improvement Allowance



On-campus hospital location



Flexible tenant configurations



Located at the intersection of
North Central Expy and I 635



Free covered parking with
direct access to building



On-site property management
& engineering staff



2 Min from Medical City Dallas
Hospital & Children's Hospital
5 Min from Presbyterian Hospital



5/1,000 SF of Free Garage
Parking & Surface Parking



Anchored by brand new
surgery center



Medical City Heart / Spine Hospital

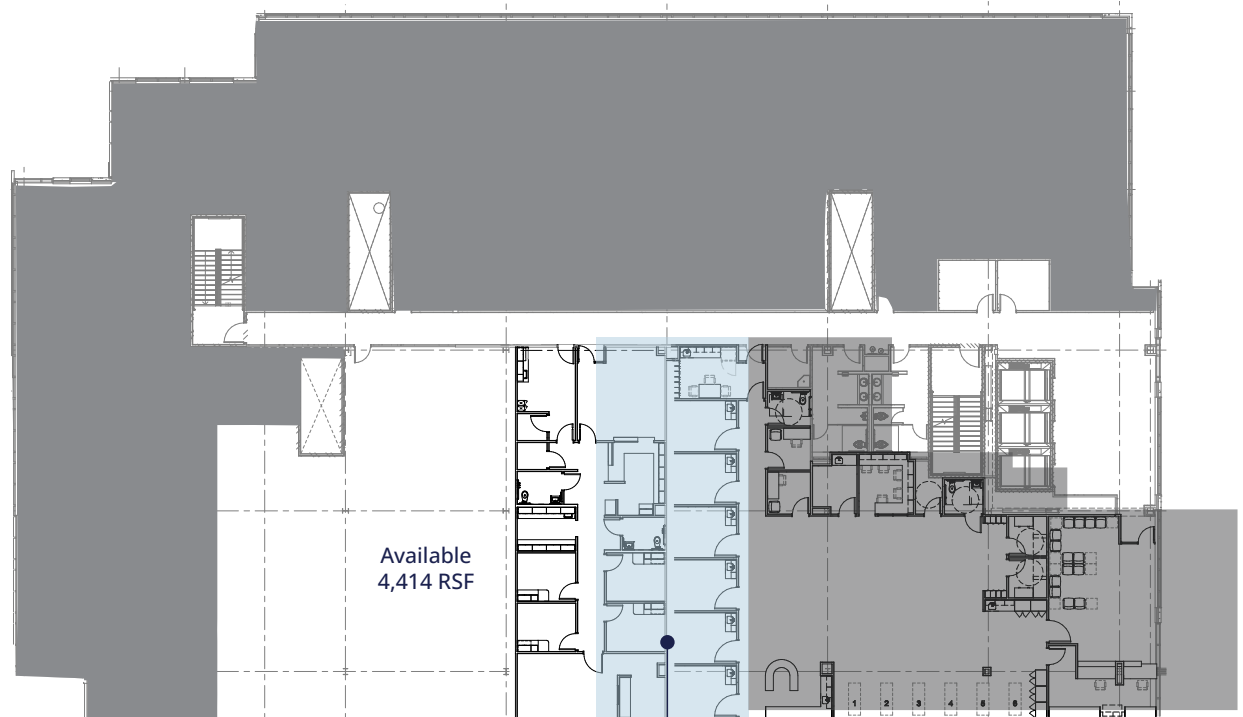
- Includes 63 private patient rooms
- Provides specialized cardiac services
- The location where the only dedicated cardiac emergency room in Dallas resides
- Includes 24 beds
- Provides specialized spine care

Imaging Services (CT scan, MRI, X-ray) Intensive Care Unit | Access to Clinical Trials

Industry-Leading Research | Over 100 ICU beds, growing to 200 beds in 2025



Floor Plan

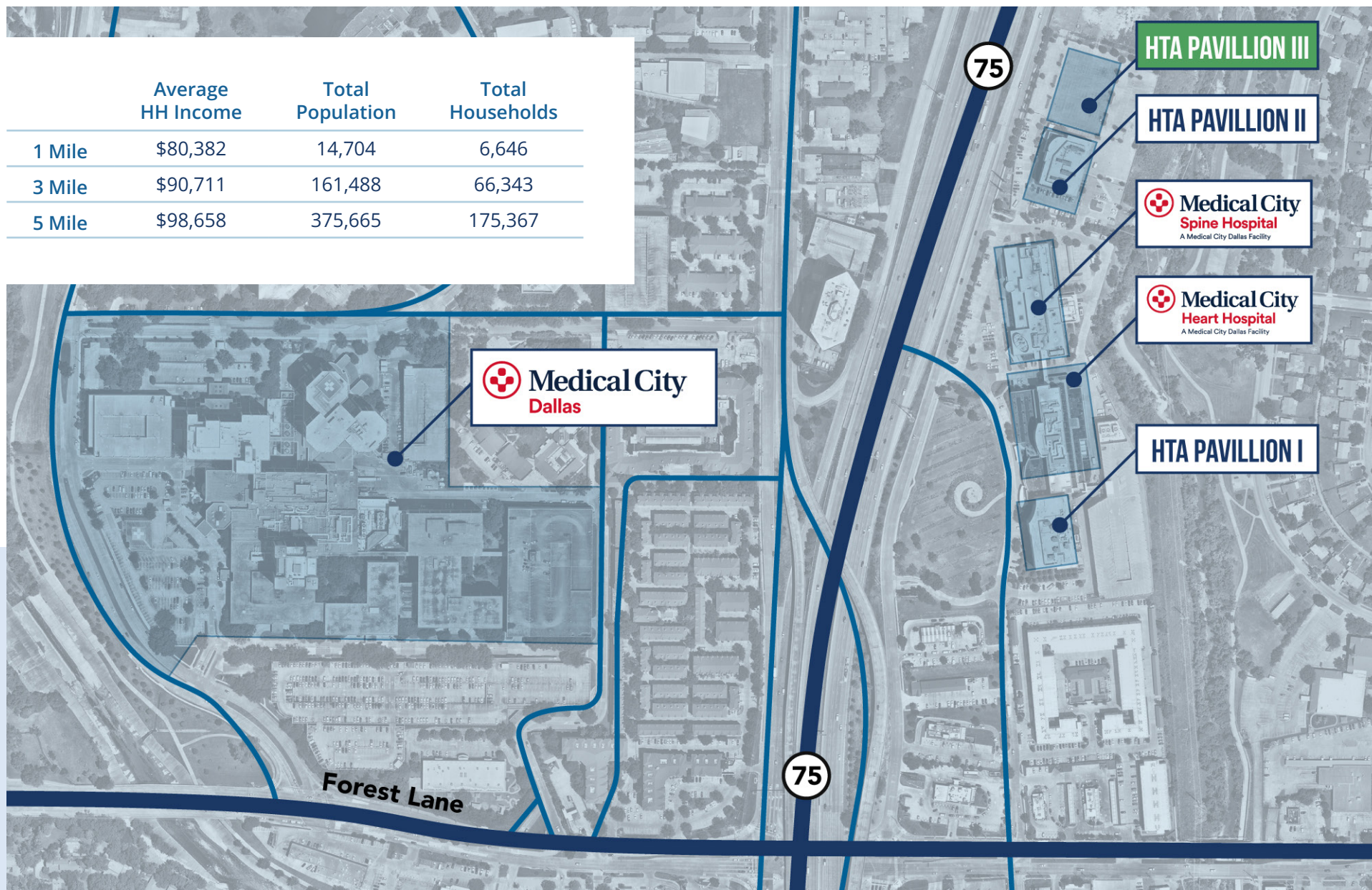


Spec Suite
2,262 RSF

Move-In Ready



Demographics





Pavilion III

12228 CENTRAL EXPRESSWAY

BRAND NEW CLASS A DEVELOPMENT

For Leasing information, please contact:

Jason Cheek

jason.cheek@jll.com

+1 214 438 8019

Ethan Garner

ethan.garner@jll.com

+1 214 438 6515

Chris Higbie

chris.higbie@jll.com

+1 214 396 5422

Although information has been obtained from sources deemed reliable, neither Owner nor JLL makes any guarantees, warranties or representations, express or implied, as to the completeness or accuracy as to the information contained herein. Any projections, opinions, assumptions or estimates used are for example only. There may be differences between projected and actual results, and those differences may be material. The Property may be withdrawn without notice. Neither Owner nor JLL accepts any liability for any loss or damage suffered by any party resulting from reliance on this information. If the recipient of this information has signed a confidentiality agreement regarding this matter, this information is subject to the terms of that agreement. ©2025 Jones Lang LaSalle Brokerage, Inc. All rights reserved.



Jones Lang LaSalle Brokerage, Inc.