

MEDICAL OFFICE BUILDING SPACE

# FOR LEASE

## BAYLOR MEDICAL PLAZA GRAPEVINE



2020 WEST SH-114,  
GRAPEVINE TX 76051

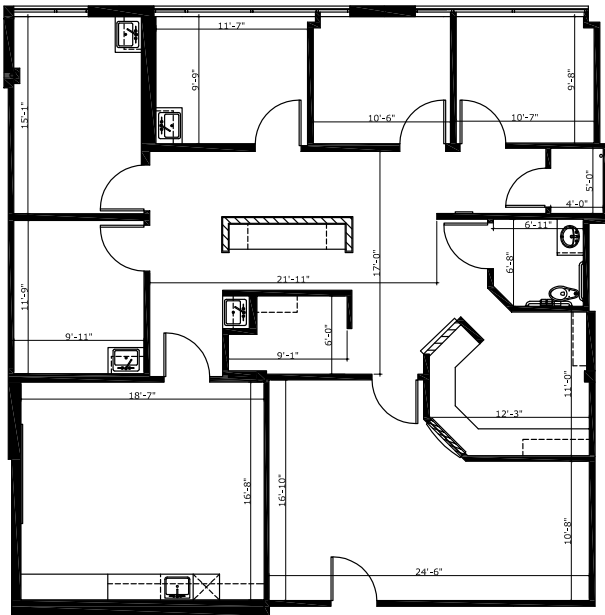
Well  
tower

# PROPERTY HIGHLIGHTS

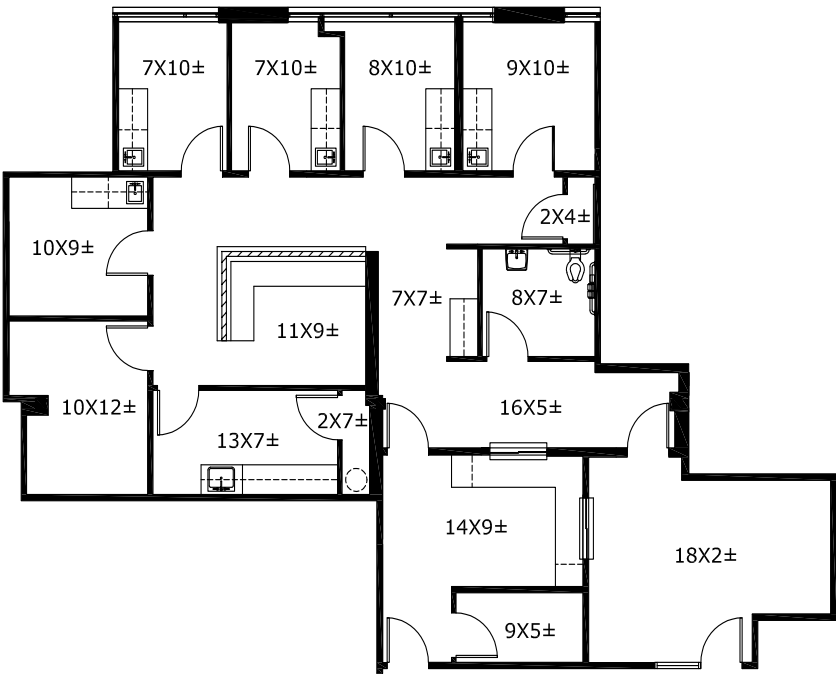
- 61,500 SF professional medical office building adjacent to Baylor Scott & White Medical Center - Grapevine
- Excellent visibility from SH-114 (Over 130,000 vehicles per day)
  - Surgery Center on site
  - Long-established physician tenant mix with synergist referral patterns in place
  - Excellent patient accessibility
  - BS&W - Grapevine recently earned a Level II Major Trauma Center designation, which makes the 301 bed hospital the only such center in Northeast Tarrant County, and 1 of only 5 in DFW

# AVAILABILITY

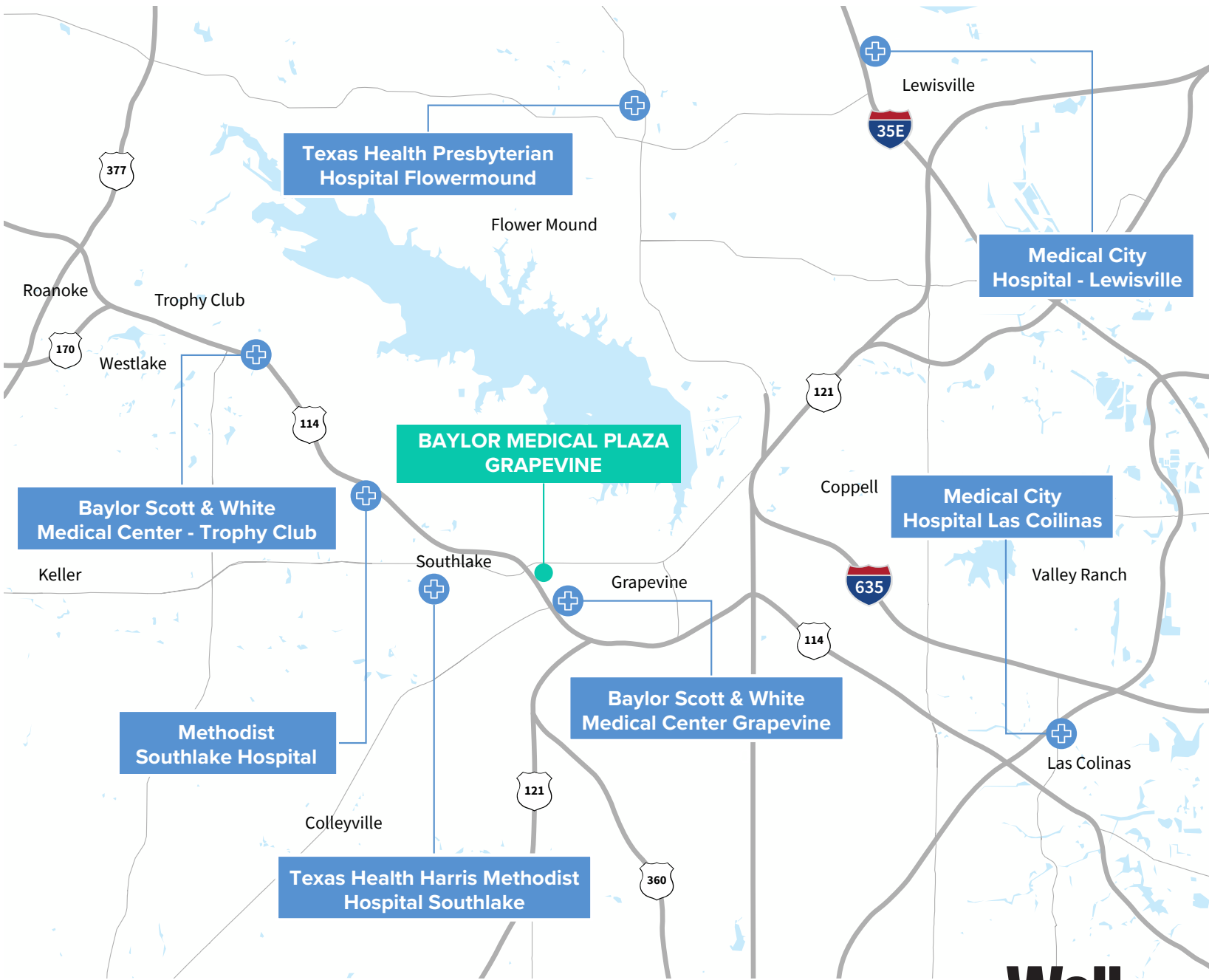
Suite 180  
2,289 SF  
  
Virtual Tour



Suite 220  
1,990SF  
  
Virtual Tour



# PROPERTY LOCATION



# LEASING TEAM

**ADDRESS:** 2020 WEST SH - 114, GRAPEVINE TX 76051

**ETHAN GARNER**

214.438.6515

ethan.garner@jll.com

**AUSTIN BARRETT**

214.438.6420

austin.barrett@jll.com



---

Although information has been obtained from sources deemed reliable, JLL does not make any guarantees, warranties or representations, express or implied, as to the completeness or accuracy as to the information contained herein. Any projections, opinions, assumptions or estimates used are for example only. There may be differences between projected and actual results, and those differences may be material. JLL does not accept any liability for any loss or damage suffered by any party resulting from reliance on this information. If the recipient of this information has signed a confidentiality agreement with JLL regarding this matter, this information is subject to the terms of that agreement. ©2025 Jones Lang LaSalle Brokerage, Inc. All rights reserved.