

221 MAIN

YOUR FUTURE
**STARTS
HERE**

www.221MAIN.com



221 MAIN

is a modern 16-story Class - A high rise in the premier South of Market location of the Spear Street corridor. The building features an unparalleled amenity package with an abundance of outdoor space and is LEED Platinum certified.

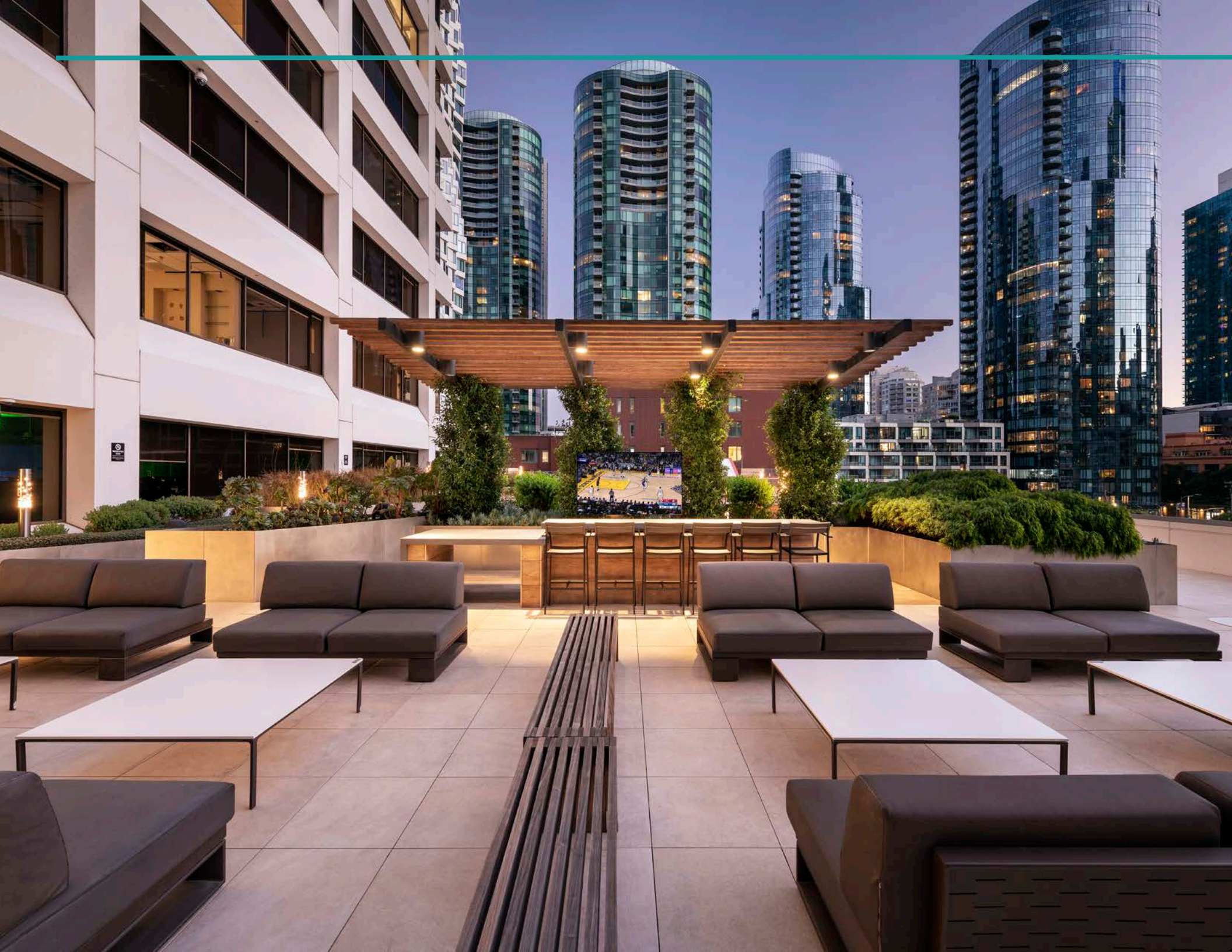
Large, open floor plates between 22,000 – 35,000 RSF offer a variety of space options for tenants. The continuous window line awards exceptional natural light with incredible views of the Bay. Private amenities include expansive roof terrace, conference center, tenant lounge and ground floor retail.

Tenants at 221 Main have access to a secured bike storage, underground parking facility, building showers for exclusive tenant use and the best private deck in San Francisco!



CleanPowerSF





LOCAL AMENITIES

221 MAIN's unprecedented location provides access to a plethora of neighborhood amenities, public transportation alternatives and easy access to the freeway. Directly across from the Transbay Temporary Terminal provides tenants with direct access to seven regional public transportation agencies, including BART, light rail, Caltrain, the ferry system and Muni.

ENTERTAINMENT

1. SF Museum of Modern Art
2. Moscone Convention Center
3. California Historical Society
4. Carbon Art Museum
5. SF Railway Museum
6. Theatre Rhinoceros
7. Landmark Theater
8. Supperclub
9. 21st Amendment Brewery
10. AT&T Park
11. Eagle Club Indoor Golf

RESTAURANTS

1. Ferry Building - Multiple
2. One Market
3. Americano
4. Boulevard
5. One Market Plaza - Multiple
6. Rincon Center - Multiple
7. Rosa Mexicano
8. Ozumo
9. Epic Roasthouse
10. Prospect
11. 50 Fremont - Multiple
12. Rn74
13. Town Hall

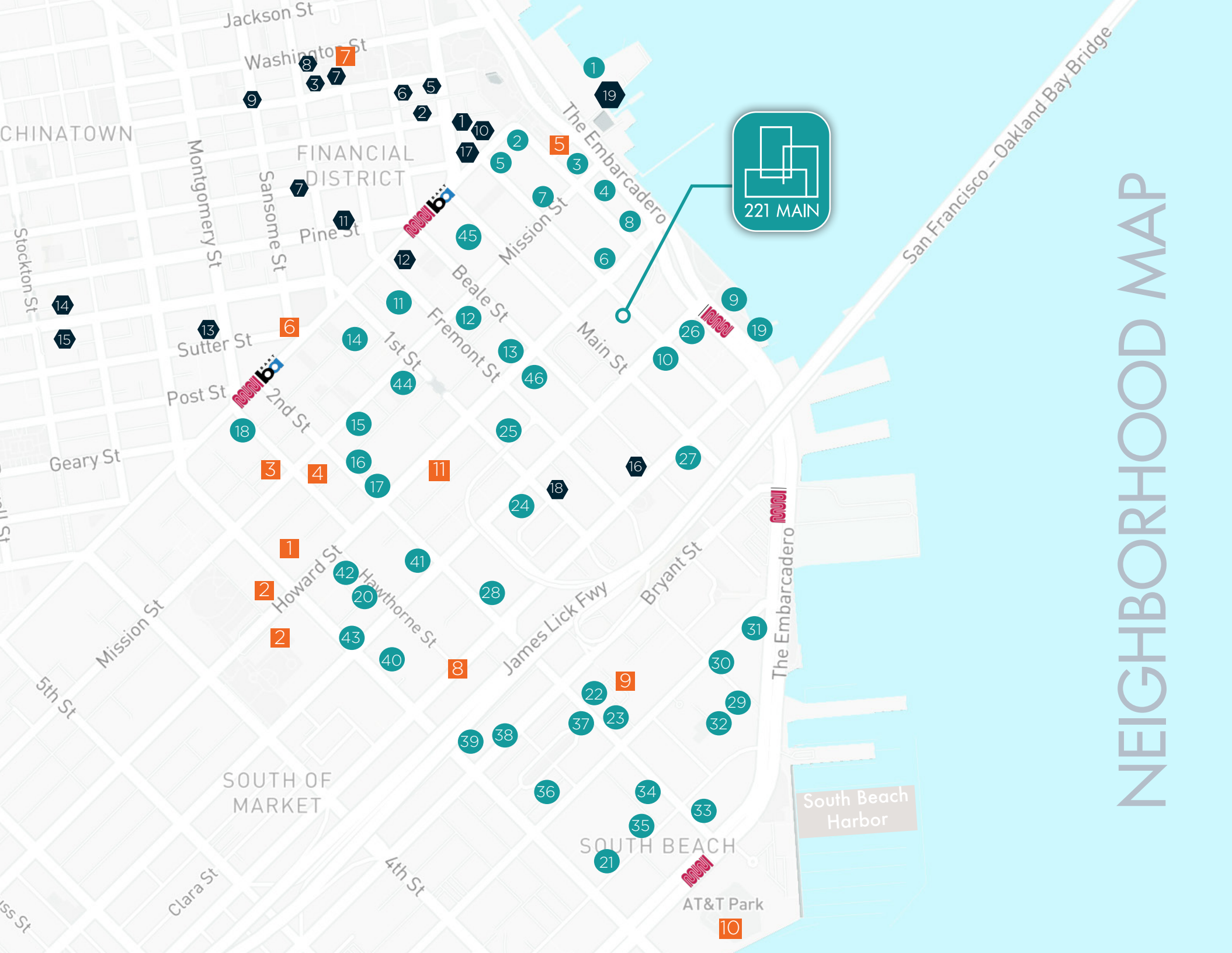
14. Yank Sing
15. Salt House
16. Anchor & Hope
17. Osha Thai
18. Pied Piper
19. Waterbar
20. Benu
21. Saison
22. Nova Restaurant & Bar
23. 21st Amendment
24. Local Kitchen & Wine Merchant
25. Spice Kit
26. Palomino
27. Gabby Cafe
28. Red Dog Restaurant + Bar
29. Town's End Bakery
30. Crossroads
31. Delancey Street
32. House of Hunan
33. Paragon Restaurant + Bar
34. Ironside
35. Tres
36. The Butler and Chef Bistro
37. Ozone Thai
38. La Briciola
39. Garaje
40. Canton Seafood + Dim Sum

41. Fly Trap
42. Roe Restaurant
43. Shiki Japanese Restaurant
44. Proper Food
45. Torc
46. Sushi Fantastic

SHOPPING

1. Ann Taylor Loft
2. Ann Taylor
3. Banana Republic
4. Edwards Luggage
5. Lucy Activewear
6. Gap
7. Papyrus (3)
8. Jos A. Bank (2)
9. San Francisco News & Gifts
10. GNC
11. Financial District Hardware
12. Carlton Cards
13. Crocker Galleria
14. The North Face
15. Marmot
16. Luxury Pets
17. Barcelino Men's Apparel
18. Publique Living
19. Sur La Table





NEIGHBORHOOD MAP

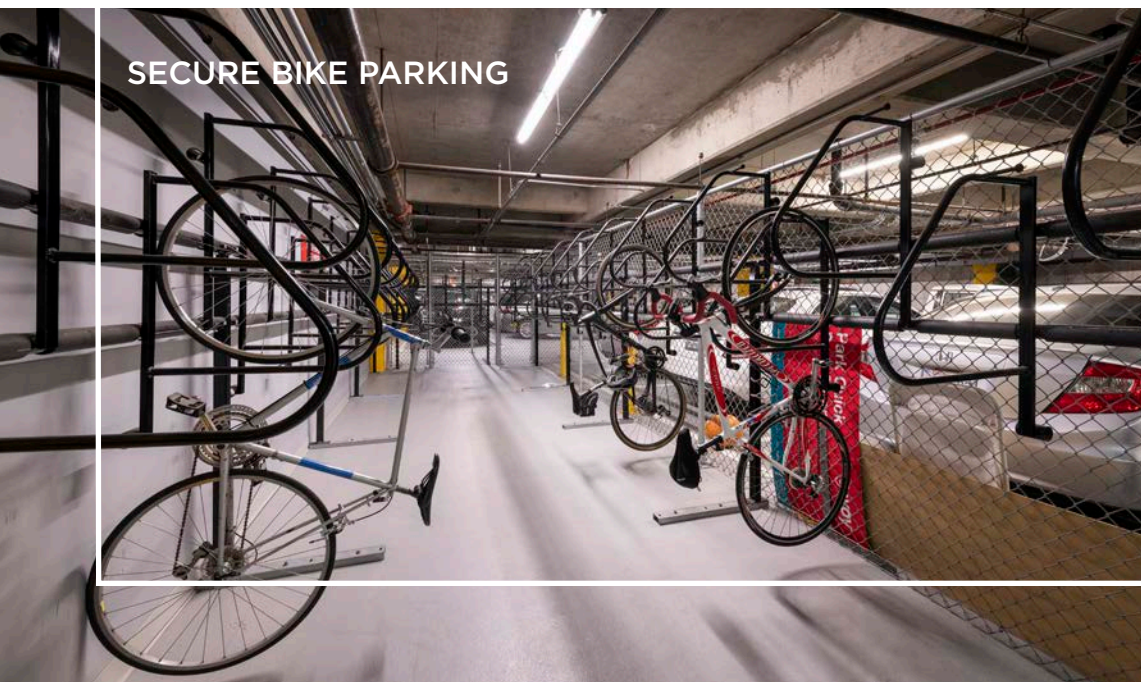
ONSITE AMENITIES

EXPANSIVE PRIVATE TERRACE WITH UNPARALLELED VIEWS AND AN ABUNDANCE OF AREAS TO RELAX, REGROUP AND COLLABORATE

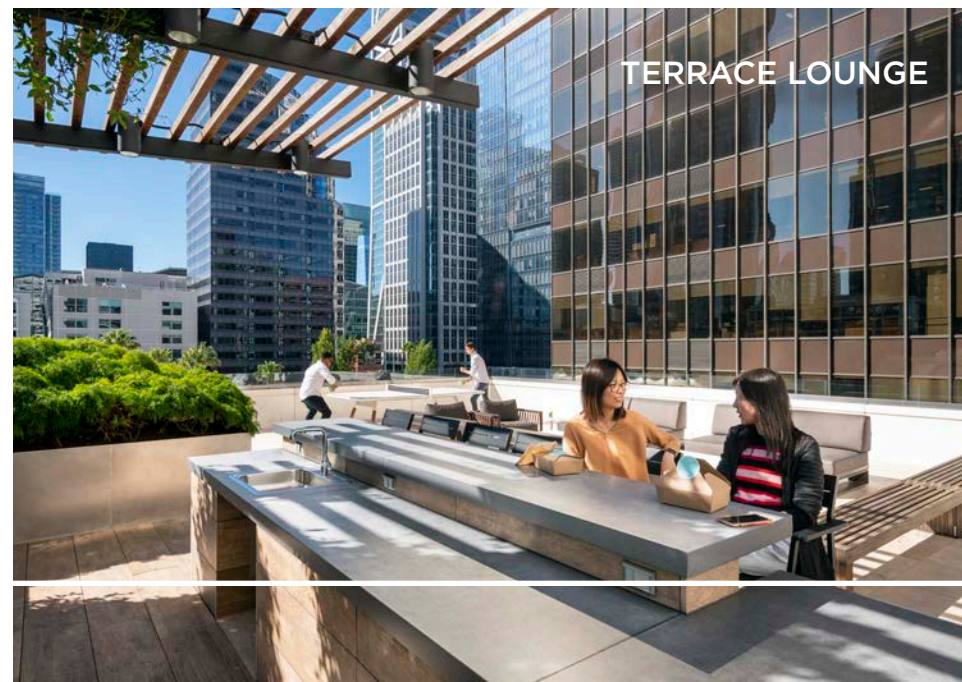




TERRACE PING-PONG



SECURE BIKE PARKING



TERRACE LOUNGE



TENANT LOUNGE AND BAR



FITNESS CENTER



BOULDERING WALL

AVAILABILITIES

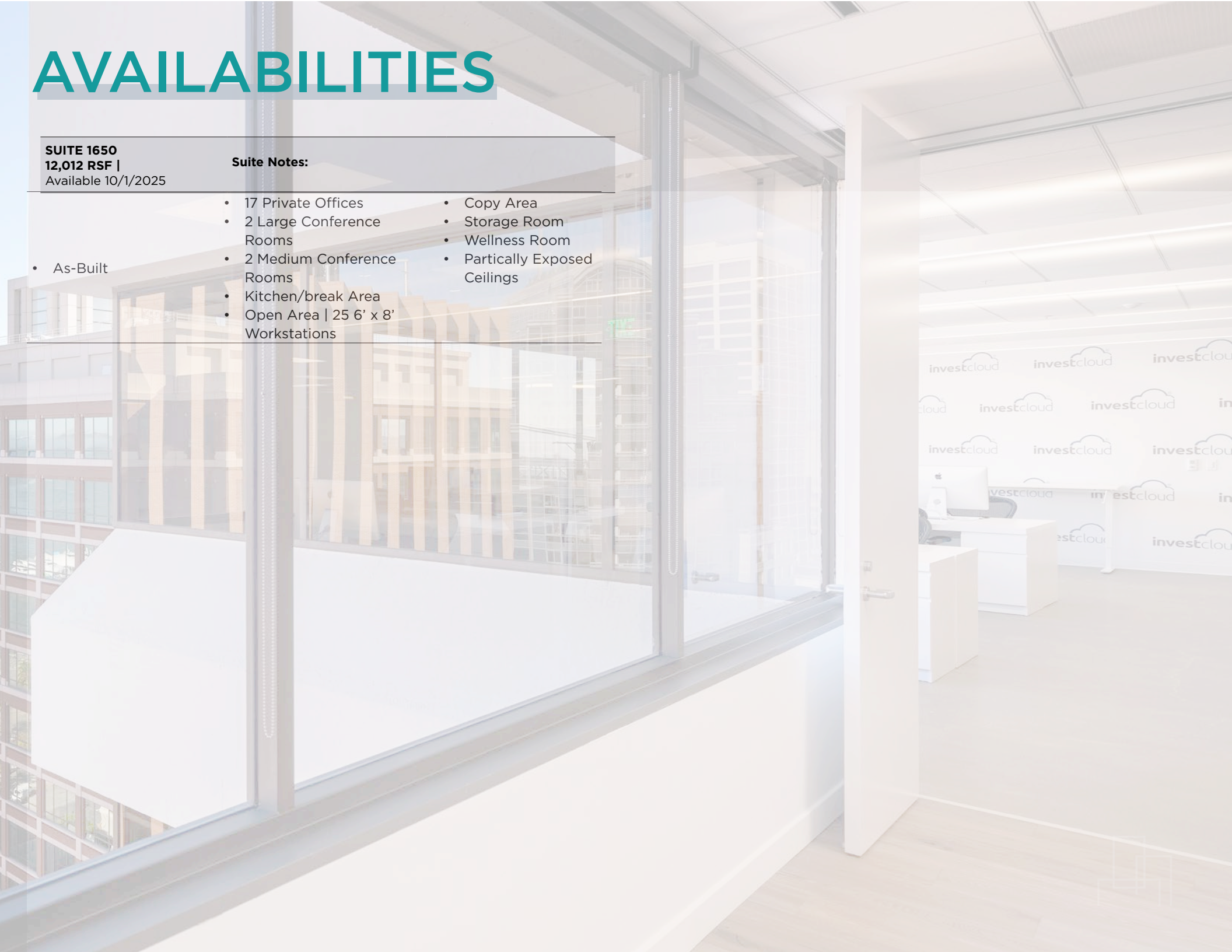
SUITE 400 4,102 RSF Available 8/1/2025		SUITE 1000 23,703 RSF Available Now	
Suite Notes:		Suite Notes:	
<ul style="list-style-type: none"> As-Built 	<ul style="list-style-type: none"> Brand New Spec Suite Underway! Creative Ceilings Fully Furnished 6 Private Offices 	<ul style="list-style-type: none"> 1 Large Conference Room Phone Room Kitchen Break Area Reception 	<ul style="list-style-type: none"> Amazing Bay Bridge & Water Views Fully Furnished 2 Large Conference Rooms 4 Medium Conference Rooms 14 Private Offices/Huddle Rooms 8 Focus Rooms Open Area - Room for 160+ Workstations Large Kitchen/Break Area Wellness Room Storage Room IDF Room
SUITE 500 12,435 RSF Available Now		SUITE 1100 23,695 RSF Available 9/1/2025	
Suite Notes:		Suite Notes:	
<ul style="list-style-type: none"> As-Built 	<ul style="list-style-type: none"> Amazing Bay Views Fully Furnished Open Ceiling 1 Large Conference Room 3 Small Conference Rooms 12 Private Offices/Huddle Rooms Open Area - Room For 60+ Workstations Large Kitchen/Break Area IDF Room Supply Room 	<ul style="list-style-type: none"> As-Built 	<ul style="list-style-type: none"> Full Reception Area 160 Desks 28 Offices Boardroom With Sweeping Bay views Training Room Game Room Refreshed Restrooms and Gallery Kitchen
SUITE 600 - 23,650 RSF SUITE 650 - 8,466 RSF Available 4/1/2025		SUITE 1200 18,400 RSF Available Now	
Suite Notes:		Suite Notes:	
<ul style="list-style-type: none"> As-Built 	<ul style="list-style-type: none"> 20 Private Offices 3 Medium/Large Conference Rooms 3 Kitchenettes Amazing Bay Views Divisible to 8,319 RSF Open Area Great Natural Light 	<ul style="list-style-type: none"> As-Built 	<ul style="list-style-type: none"> Amazing Bay Bridge & Water Views Fully Furnished Open Ceiling 3 Large Conference Rooms 4 Medium Conference Rooms 12 Private Offices/Huddle Rooms 2 Focus Rooms Open Area - Room For 120+ Workstations Large Kitchen/Break Area Storage Room IDF Room
SUITE 770 5,941 RSF Available 8/1/2025			
Suite Notes:			
<ul style="list-style-type: none"> As-Built 	<ul style="list-style-type: none"> 2 Private Offices/Meeting Rooms 1 Conference Room Large Open Space Kitchenette Great Natural Light Open Ceiling 		

AVAILABILITIES

SUITE 1650
12,012 RSF |
Available 10/1/2025

Suite Notes:

- As-Built
- 17 Private Offices
- 2 Large Conference Rooms
- 2 Medium Conference Rooms
- Kitchen/break Area
- Open Area | 25 6' x 8' Workstations
- Copy Area
- Storage Room
- Wellness Room
- Partically Exposed Ceilings





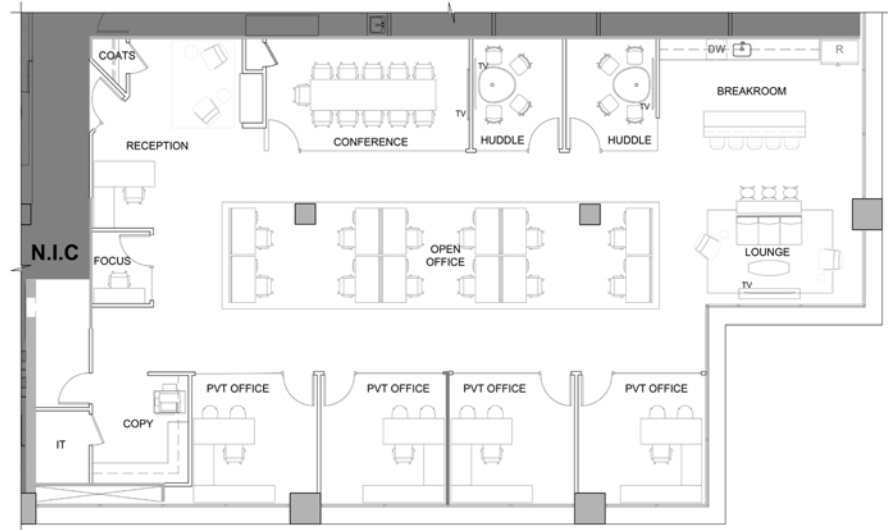
SUITE 400

4,102 RSF

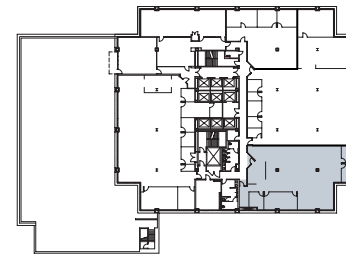
AVAILABLE
8/1/2025

- Brand New Spec Suite Underway!
- Creative Ceilings
- Fully Furnished
- 6 Private Offices
- 1 Large Conference Room
- Phone Room
- Kitchen
- Break Area
- Reception

MAIN STREET



SPEAR STREET





221 MAIN

SUITE 500

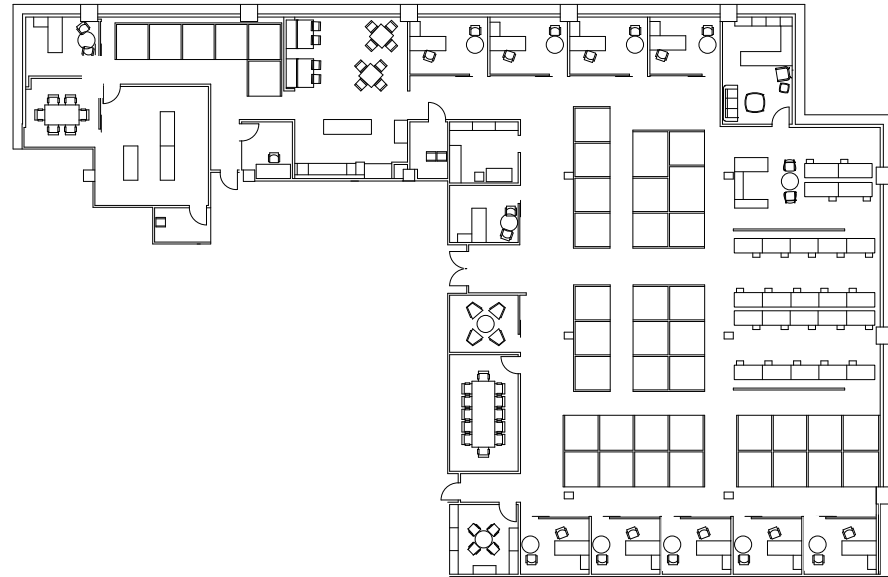
12,436 RSF

AVAILABLE NOW

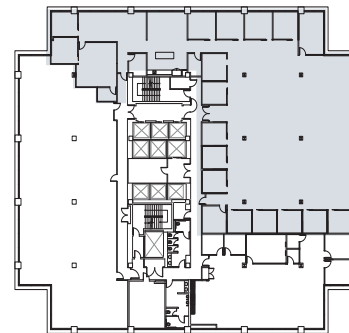
- Amazing Bay Views
- FULLY FURNISHED
- Open Ceiling
- 1 Large Conference Room
- 3 Small Conference Rooms
- 12 Private Offices/Huddle Rooms
- Open Area - Room for 60+ Workstations
- Large Kitchen/Break Area
- IDF Room
- Supply Room

[CLICK HERE FOR VTS MARKETPLACE](#)

MAIN STREET



SPEAR STREET





221 MAIN

SUITE 600

23,560 RSF

SUITE 650

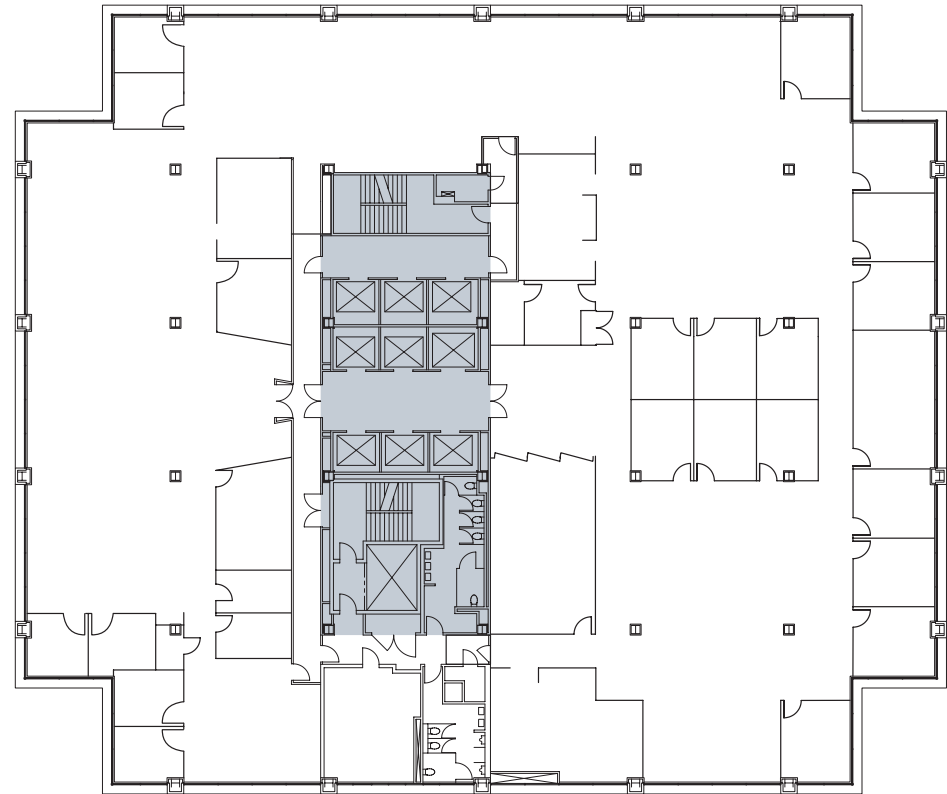
8,466 RSF

AVAILABLE

4/1/2025

- 20 Meeting Room
- 3 Medium/Large Conference Rooms
- 3 Kitchenettes
- Amazing Bay Views
- Divisible to 8,466 RSF
- Open Area
- Great Natural Light

MAIN STREET



SPEAR STREET



221 MAIN

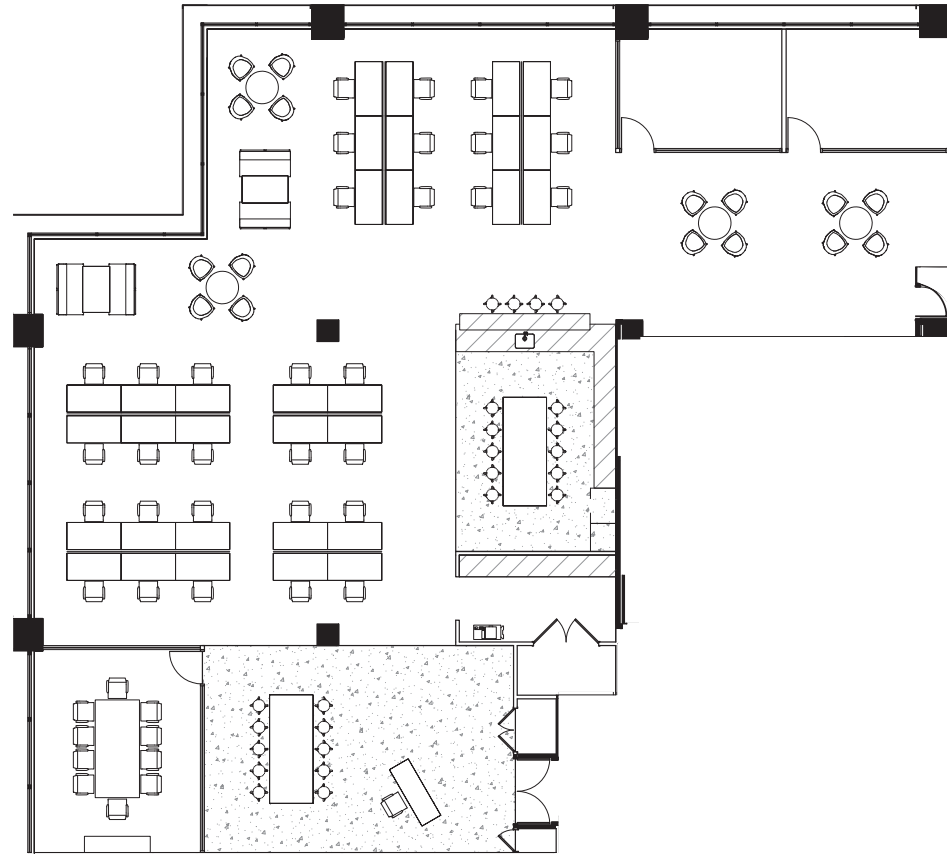
SUITE 770

5,941 RSF

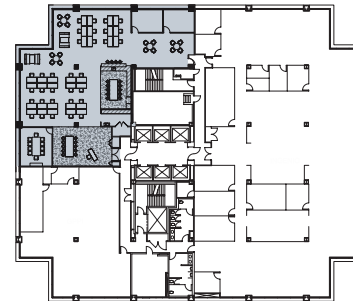
AVAILABLE
8/1/2025

- 2 Private Offices/Meeting Rooms
- 1 Conference Room
- Large Open Space
- Kitchenette
- Great Natural Light
- Open Ceiling

MAIN STREET



SPEAR STREET





221 MAIN

SUITE 1000

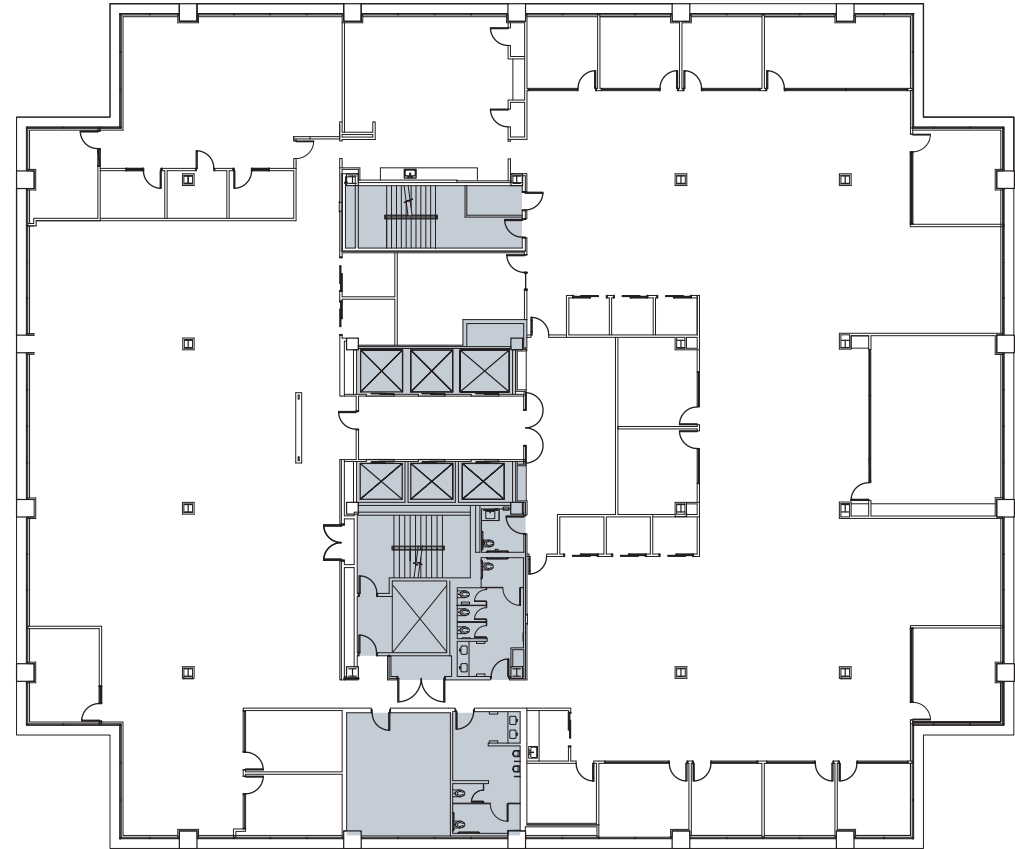
23,703 RSF

AVAILABLE NOW

- Amazing Bay Bridge & Water Views
- FULLY FURNISHED
- 2 Large Conference Rooms
- 4 Medium Conference Rooms
- 14 Private Offices/Huddle Rooms
- 8 Focus Rooms
- Open Area - Room for 160+ Workstations
- Large Kitchen/Break Area
- Wellness Room
- Storage Room
- IDF Room

[CLICK HERE FOR VTS MARKETPLACE](#)

MAIN STREET



SPEAR STREET

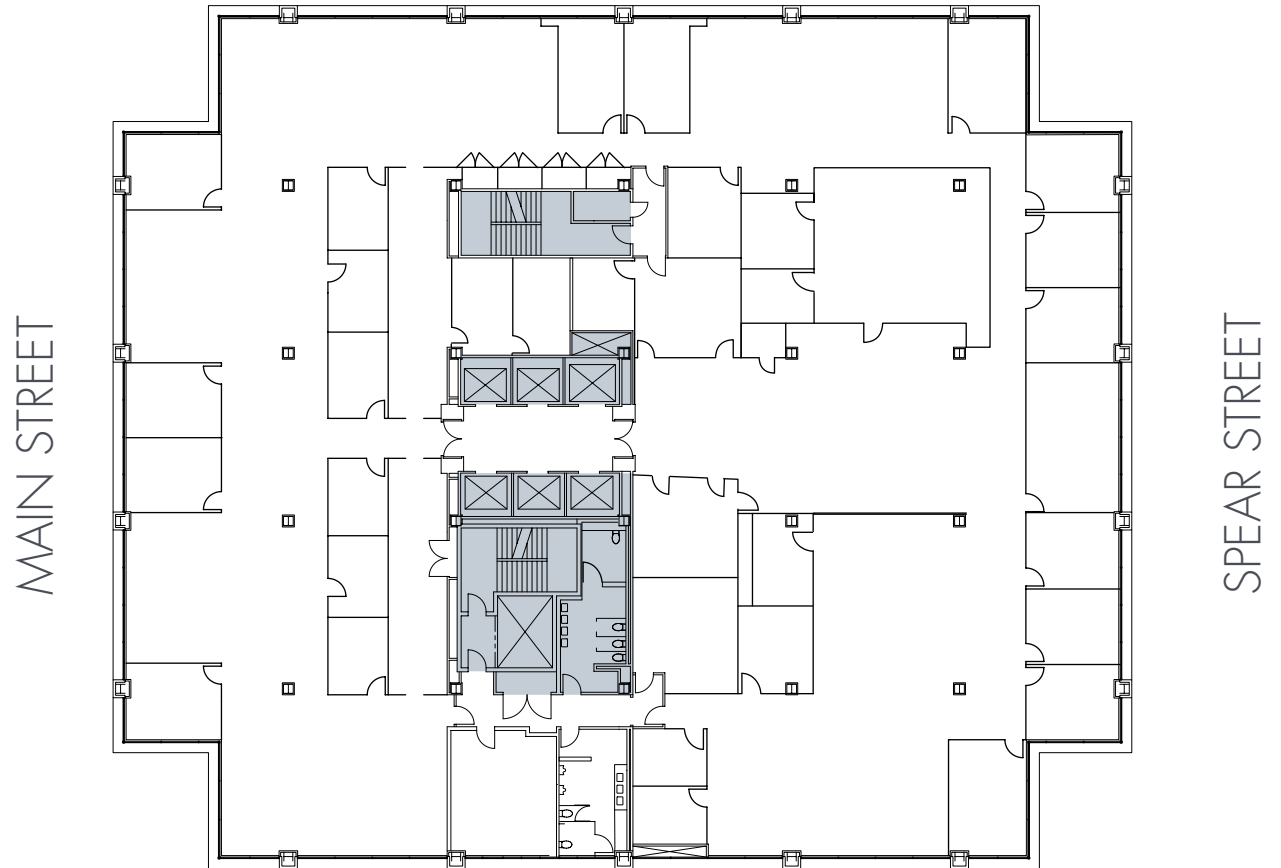


SUITE 1100

23,695 RSF

AVAILABLE
9/1/2025

- Full Reception Area
- 130 Desks
- 27 Meeting Rooms
- Boardroom With Sweeping Bay Views
- Training Room
- Game Room
- Refreshed Restrooms and Gallery Kitchen





221 MAIN

SUITE 1200

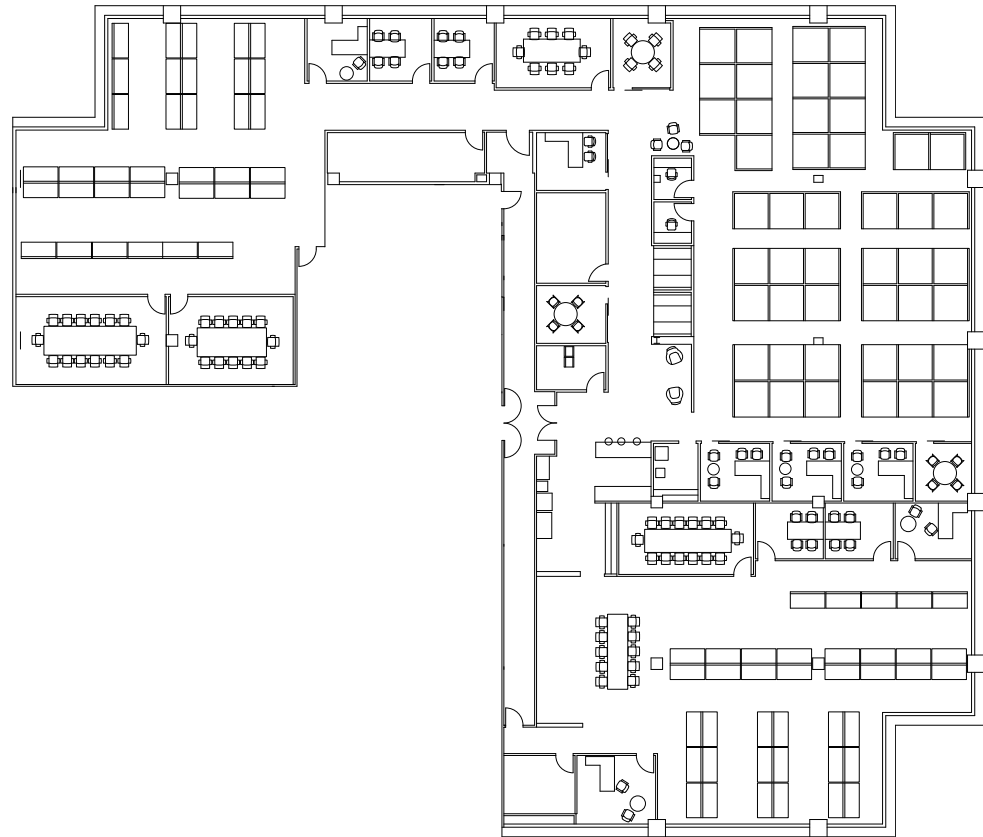
18,400 RSF

AVAILABLE NOW

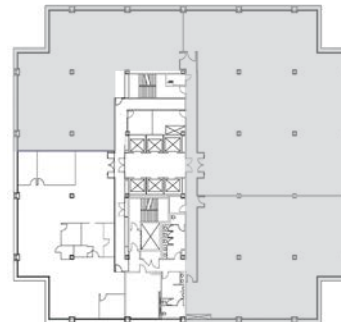
- Amazing Bay Bridge & Water Views
- FULLY FURNISHED
- Open Ceiling
- 3 Large Conference Rooms
- 4 Medium Conference Rooms
- 12 Private Offices/Huddle Rooms
- 2 Focus Rooms
- Open Area - Room for 120+ Workstations
- Large Kitchen/Break Area
- Storage Room
- IDF Room

[CLICK HERE FOR VTS MARKETPLACE](#)

MAIN STREET



SPEAR STREET





SUITE 1650

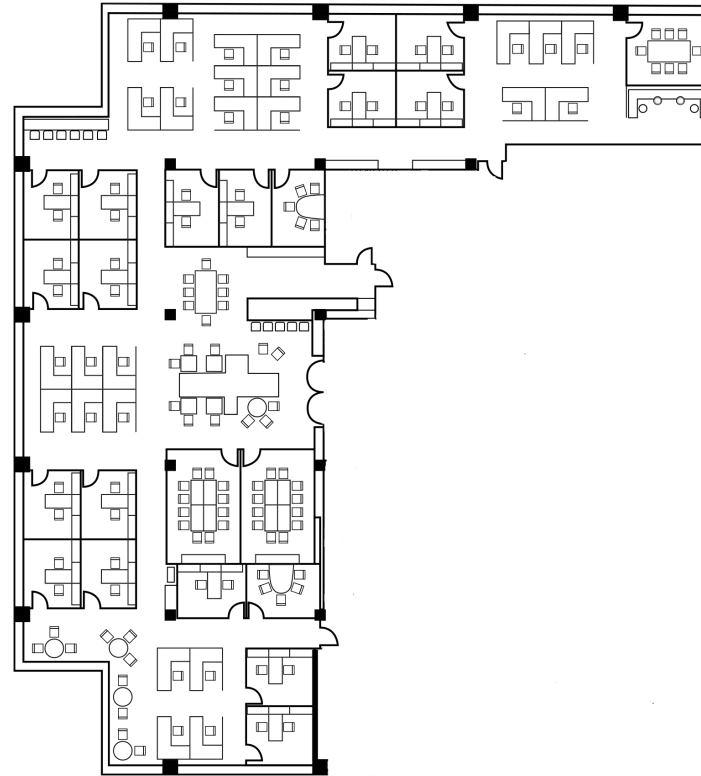
12,012 RSF

AVAILABLE
10/1/2025

- 17 Private Offices
- 2 Large Conference Rooms
- 2 Medium Conference Rooms
- Open Area | 25 6' x 8' Workstations
- Kitchen/Break Area
- Copy Area
- Storage Room
- Wellness Room
- Partically Exposed Ceilings

[CLICK HERE TO SEE PHOTOS](#)

MAIN STREET



SPEAR STREET





Wes Powell
Executive Managing Director
+1 415 395 4901
wes.powell@jll.com
License No.: 1702003

Steven A. Anderson
Managing Director
+1 415 395 7265
steve.anderson@jll.com
License No.: 869389

Lexi Castellino
Associate
+1 650 400 8344
lexi.castellino@jll.com
RE Lic. # 02221002

www.221MAIN.com



Columbia
Property Trust



Although information has been obtained from sources deemed reliable, JLL does not make any guarantees, warranties or representations, express or implied, as to the completeness or accuracy as to the information contained herein. Any projections, opinions, assumptions or estimates used are for example only. There may be differences between projected and actual results, and those differences may be material. JLL does not accept any liability for any loss or damage suffered by any party resulting from reliance on this information. If the recipient of this information has signed a confidentiality agreement with JLL regarding this matter, this information is subject to the terms of that agreement. ©2024 Jones Lang LaSalle Brokerage, Inc. All rights reserved.