

# A Transformed Skyline Icon Returns

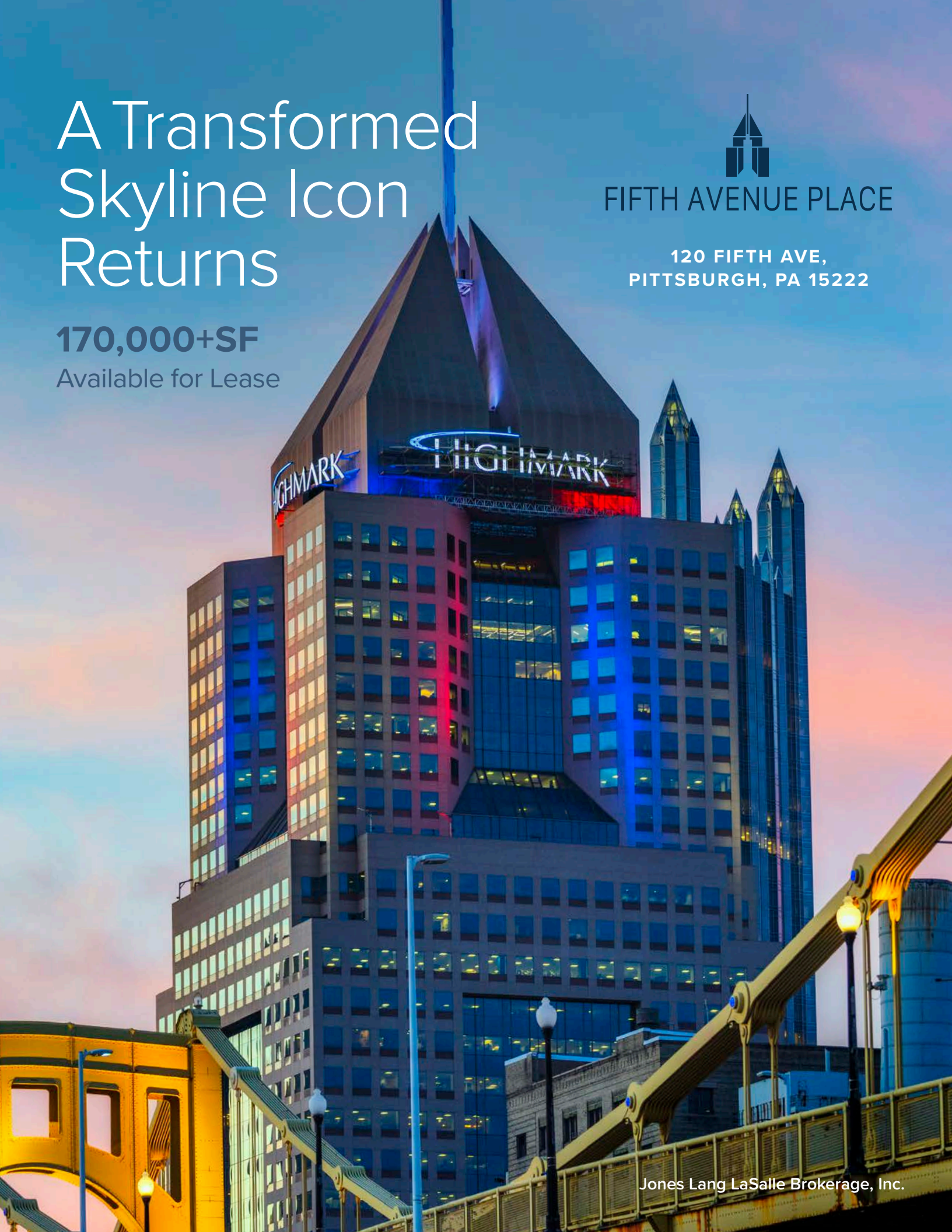
**170,000+SF**

Available for Lease



FIFTH AVENUE PLACE

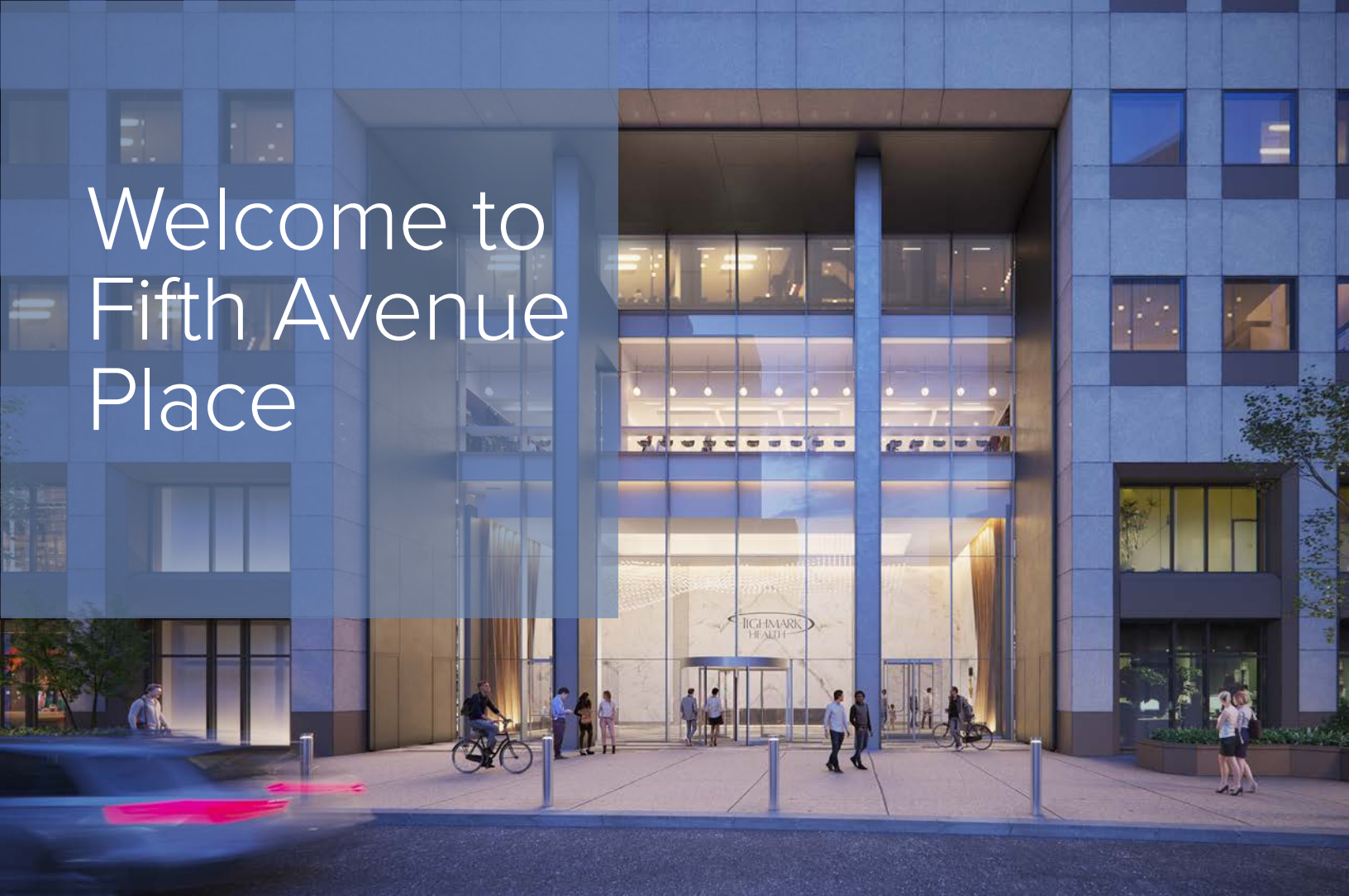
120 FIFTH AVE,  
PITTSBURGH, PA 15222



Jones Lang LaSalle Brokerage, Inc.



# Welcome to Fifth Avenue Place



Located at the corner of Liberty Avenue and Fifth Avenue, Fifth Avenue Place is a Class A trophy office tower that rises 31 stories and 616 feet above Downtown Pittsburgh. Having undergone a recent renovation, the new expansive lobby also features retail and amenity space that includes banking, dining and shopping options, making this a unique location.

Centrally located within the Golden Triangle, Fifth Avenue Place is directly adjacent to Gateway Center light rail station and Market Square, plenty of amenities, dining establishments, and more.



FULL-SERVICE CAFE EXCLUSIVELY FOR TENANTS



FIRST-CLASS FITNESS FACILITY WITH MEN'S AND WOMEN'S LOCKER ROOMS & SHOWERS



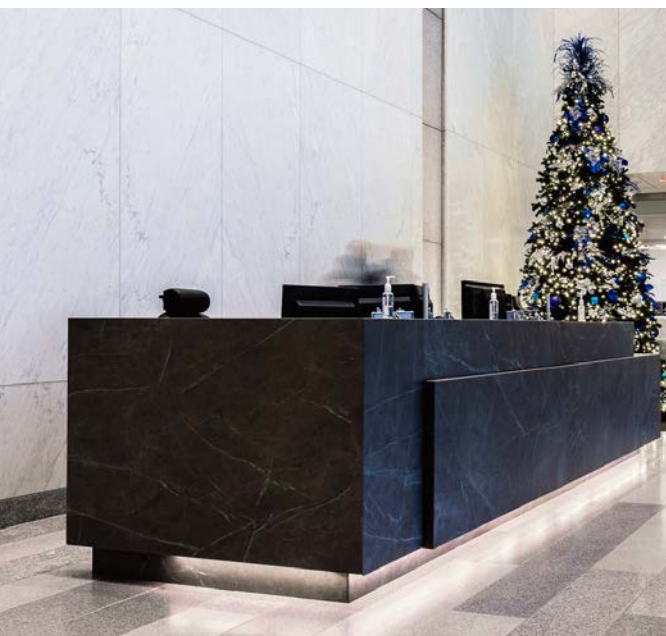
COFFEE SHOP/BAR



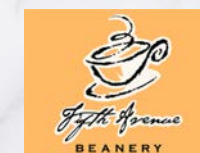
INTEGRAL HEATED PARKING GARAGE



24/7 ON-SITE SECURITY (AND HOME OF THE HIGHMARK HEALTH SECURITY FORCE)



In addition to on-site amenities, Fifth Avenue Place also boasts a retail and amenity level that includes.



FULL-SERVICE RESTAURANT (coming soon)



# Where workplace meets lifestyle

Fifth Avenue Place is located on the intersection of “Main and Main”, making dining, retail, world class cultural attractions, urban parks, and public transportation easily accessible and convenient.



## 50+

RESTAURANTS INCLUDING:



## Pittsburgh's Cultural District

Benedum Center

Heinz Hall

Byham Theater

O'Reilly Theater

David Lawrence Convention Center

## 20+

HOTELS INCLUDING:





RECENTLY RENOVATED FLOORS ARE REPRESENTATIVE OF POTENTIAL FINISH



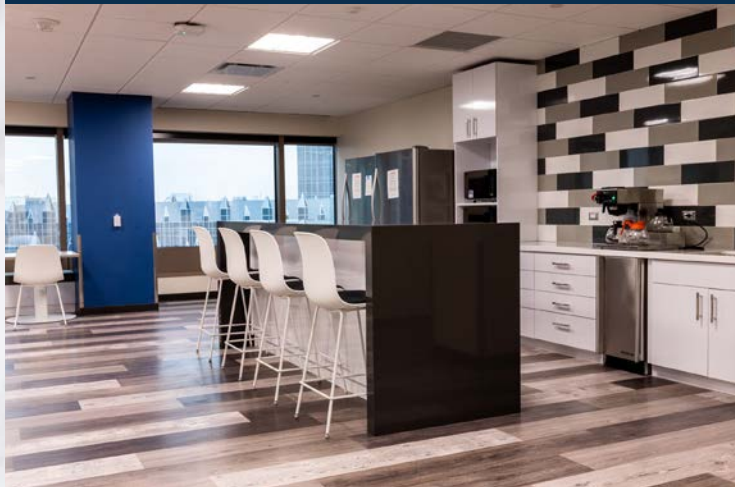
FLEXIBLE FLOOR PLATE LAYOUTS



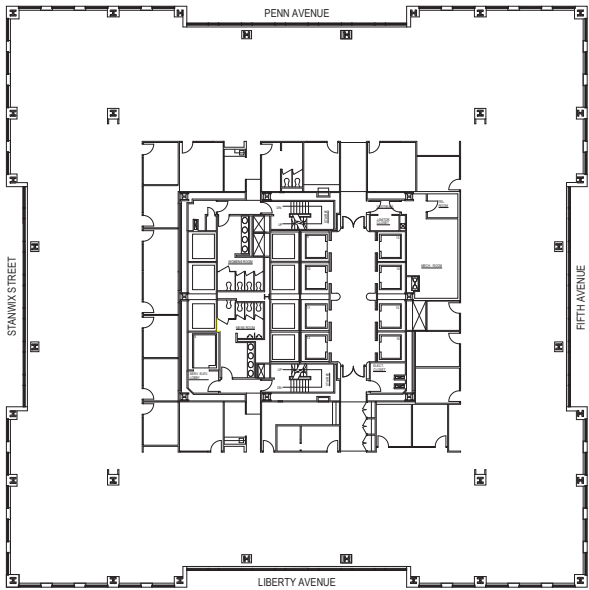
FURNITURE AVAILABLE



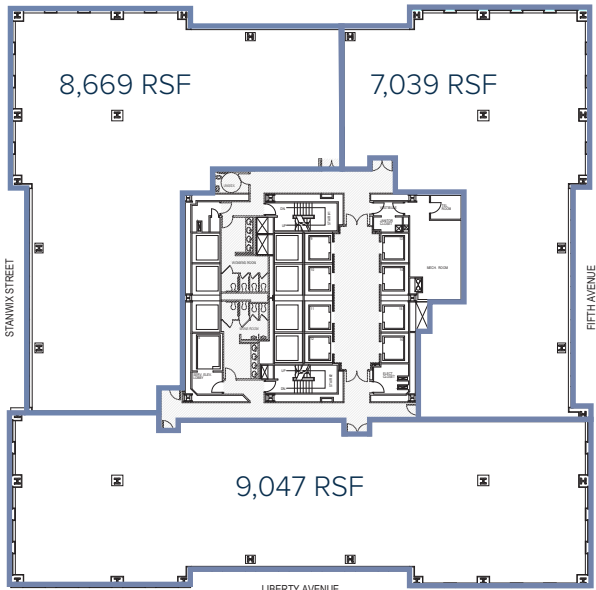
THE BEST VIEWS IN TOWN



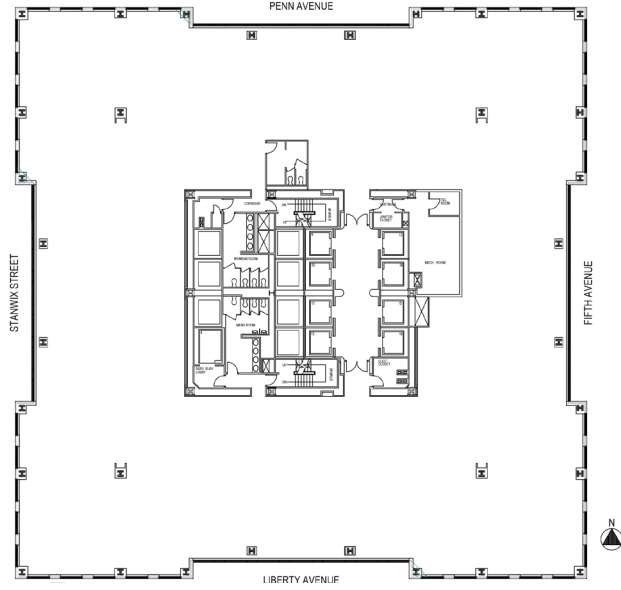
**10th Floor** | 26,962 RSF



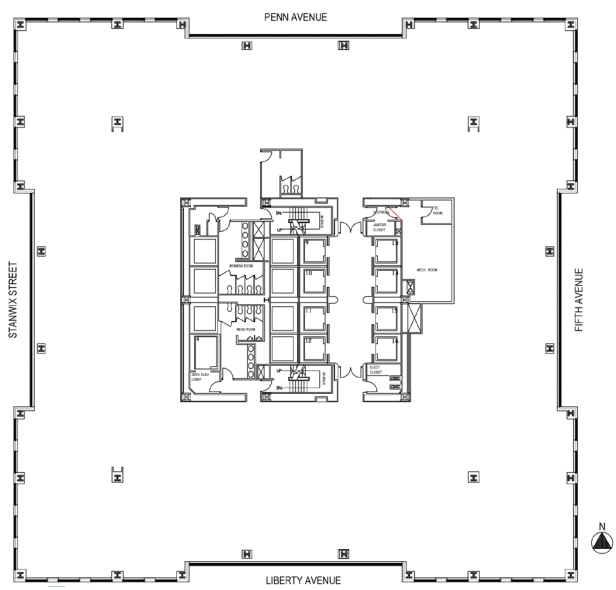
**11th Floor** | 26,962 RSF



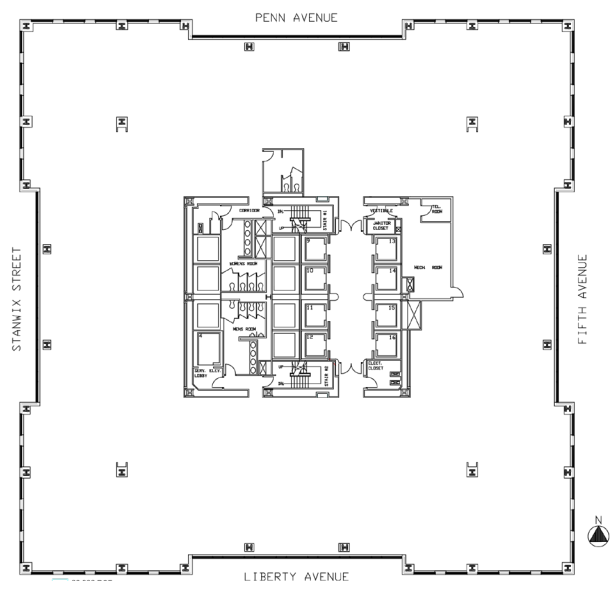
**14th Floor** | 26,962 RSF



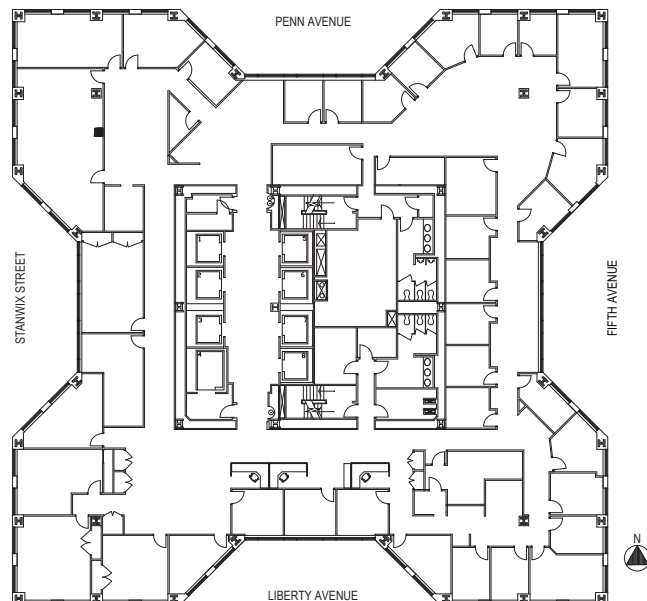
**15th Floor** | 26,962 RSF



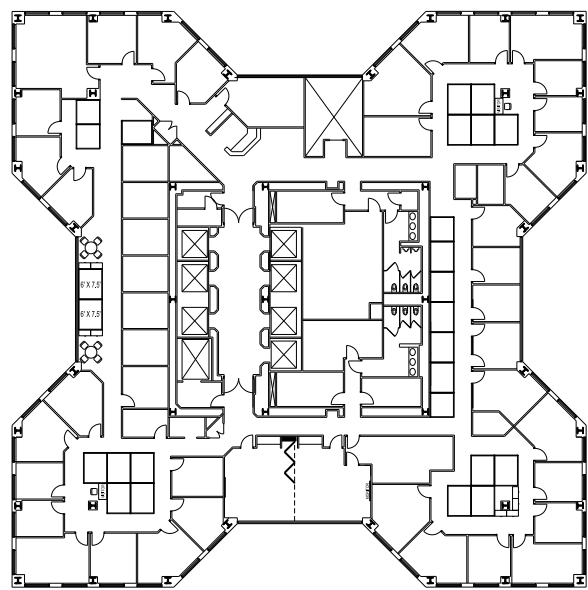
**16th Floor** | 26,962 RSF



**27th Floor** | 18,548 RSF



**28th Floor** | 18,548 SF



27th & 28th  
Floors  
**AVAILABLE**

16th, 15th  
& 14th Floors  
**AVAILABLE**

10th & 11th  
Floors  
**AVAILABLE**



## CONTACT

### **JESSE AINSMAN**

Vice President, Brokerage

+1 412 208 1400

[jesse.ainsman@jll.com](mailto:jesse.ainsman@jll.com)

### **JASON STEWART**

Managing Director, Brokerage

+1 412 208 1400

[jason.stewart@jll.com](mailto:jason.stewart@jll.com)



Although information has been obtained from sources deemed reliable, neither Owner nor JLL makes any guarantees, warranties or representations, express or implied, as to the completeness or accuracy as to the information contained herein. Any projections, opinions, assumptions or estimates used are for example only. There may be differences between projected and actual results, and those differences may be material. The Property may be withdrawn without notice. Neither Owner nor JLL accepts any liability for any loss or damage suffered by any party resulting from reliance on this information. If the recipient of this information has signed a confidentiality agreement regarding this matter, this information is subject to the terms of that agreement. ©2023 Jones Lang LaSalle IP, Inc. All rights reserved.