



For lease

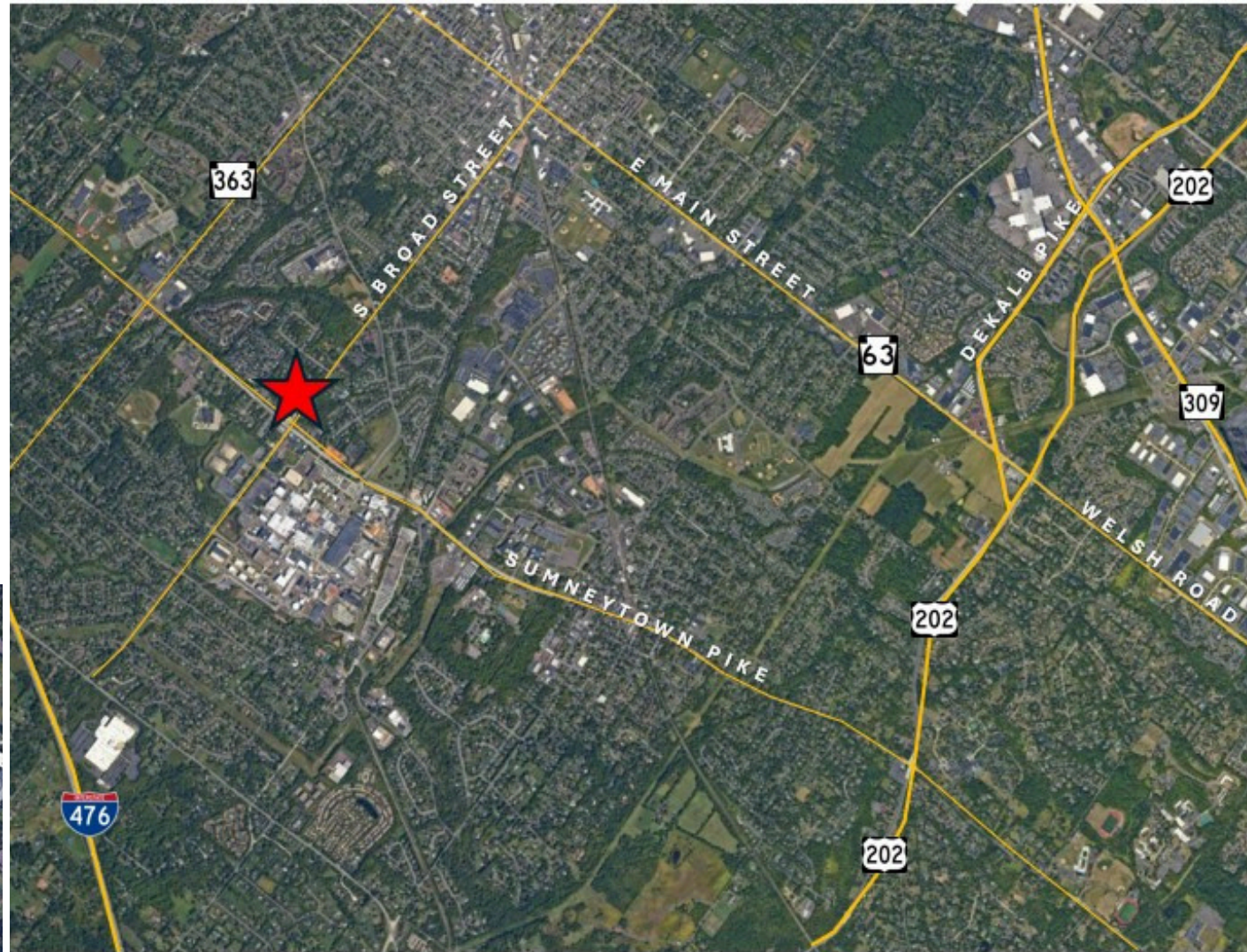
1240 S. Broad Street, Lansdale, PA

2-story 30,000 SF medical office building

800 SF - 9,000 SF available (divisible)

Lansdale's Premier Medical Office Building

- Located at Broad Street and Sumneytown Pike
- 2 miles from the R-5 Pennbrook Station
- 5.00/1,000 parking ratio
- Great responsive local ownership
- 40 covered parking spaces
- Great access to I-476 and Route 309
- Across from Merck's 350 acre campus



Patrick Brady
Executive Vice President
patrick.brady@jll.com
+1 215 771 0108

Eric Berkowitz
Senior Associate
eric.berkowitz@jll.com
+1 919 985 1421

Jones Lang LaSalle Brokerage, Inc.
550 E. Swedesford Road, Suite 260
Wayne, PA 19087
+1 610 249 2255

Although information has been obtained from sources deemed reliable, neither Owner nor JLL makes any guarantees, warranties or representations, express or implied, as to the completeness or accuracy as to the information contained herein. Any projections, opinions, assumptions or estimates used are for example only. There may be differences between projected and actual results, and those differences may be material. The Property may be withdrawn without notice. Neither Owner nor JLL accepts any liability for any loss or damage suffered by any party resulting from reliance on this information. If the recipient of this information has signed a confidentiality agreement regarding this matter, this information is subject to the terms of that agreement. ©2025. Jones Lang LaSalle IP, Inc. All rights reserved.