



# CARMEL GATEWAY

## FOUR CARMEL GATEWAY

500 East 96th Street, Indianapolis, IN 46240



### BUILDING HIGHLIGHTS

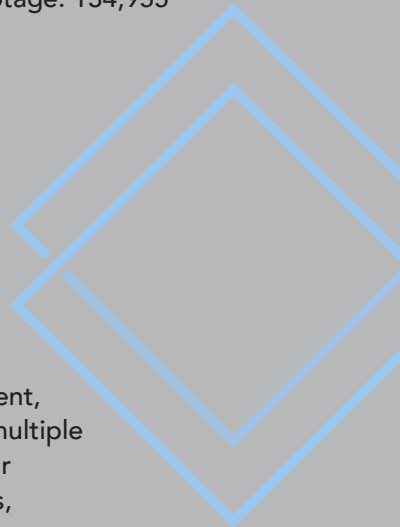
- Efficient upper floors of 28,000 sf
- Five story grand atrium with live gardens
- Abundant structured and surface parking
- Convenient access to I-465/U.S. 31
- Adjacent to PARC with on-site cafes, conference center, and fitness center
- On-site auto spa
- Lobby and exterior seating areas equipped with wi-fi

### CARMEL GATEWAY AMENITIES

Carmel Gateway amenities include a 6,000 square foot fitness center with state-of-the-art equipment, locker rooms and private showers, multiple tech-savvy meeting spaces for small or large groups, multiple cafes with online ordering, indoor and outdoor tenant lounges, an Auto Spa and Tesla/universal car chargers, a 1.36 mile walking path, an outdoor oasis with putt-putt, table tennis, cornhole, billiards, music, and relaxing areas. (see amenities map on adjacent page)

### BUILDING DESCRIPTION

- Total square footage: 134,955
- Stories: 5
- Class: A
- Year built: 1998





# FOUR CARMEL GATEWAY

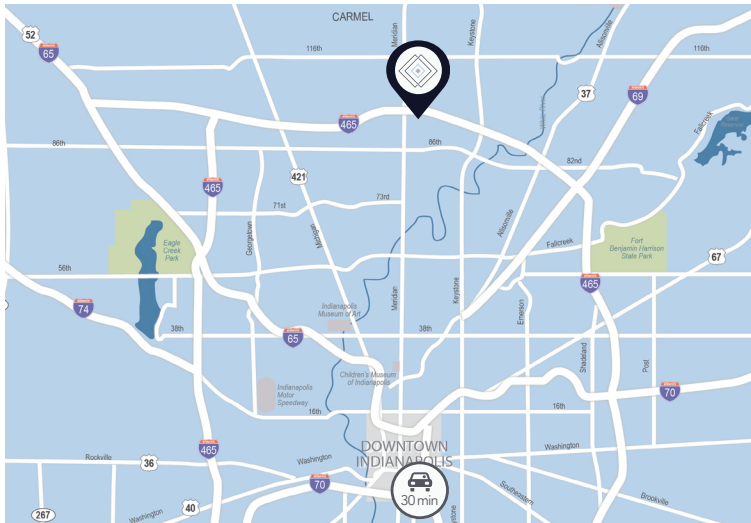
500 East 96th Street, Indianapolis, IN 46240



# CARMEL GATEWAY

## LOCATION

Carmel Gateway is strategically positioned with immediate access to I-465, U.S. 31, and 96th Street and boasts I-465 visibility. Located at the northern boundary of Indianapolis, the park is adjacent to the affluent suburbs of Carmel, Zionsville and Fishers in Hamilton County. Along with being one of the fastest growing counties in the nation, Hamilton County is home to a population earning more than double the national and state average for household income.



## AMENITIES IN CARMEL GATEWAY



**PARC**  
(Parkwood Amenity and Recreation Center)



Outdoor Lounge / Workspace



Tenant Lounge



1.36 mile walking trail



Café / Grab 'n Go



Tesla / Universal Car Chargers



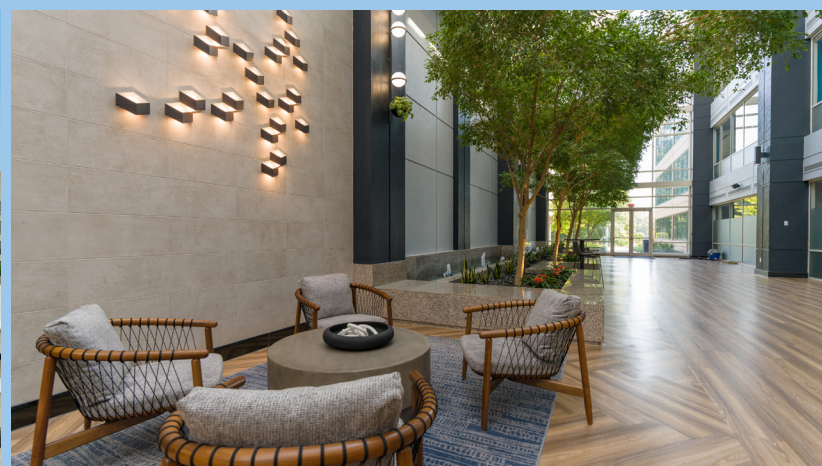
Wi-Fi in Lobby



Conference Center



Auto Spa



TRACI KAPSALIS  
Senior Vice President  
+1 317 810 7013  
traci.kapsalis@jll.com

JOHN ROBINSON  
Managing Director  
+1 317 810 7172  
john.robinson@jll.com

WILDER CART  
Associate Broker  
+1 317 810 7176  
wilder.cart@jll.com

