



Copley Center Outlot

216 E Golf Rd
Schaumburg, IL 60173



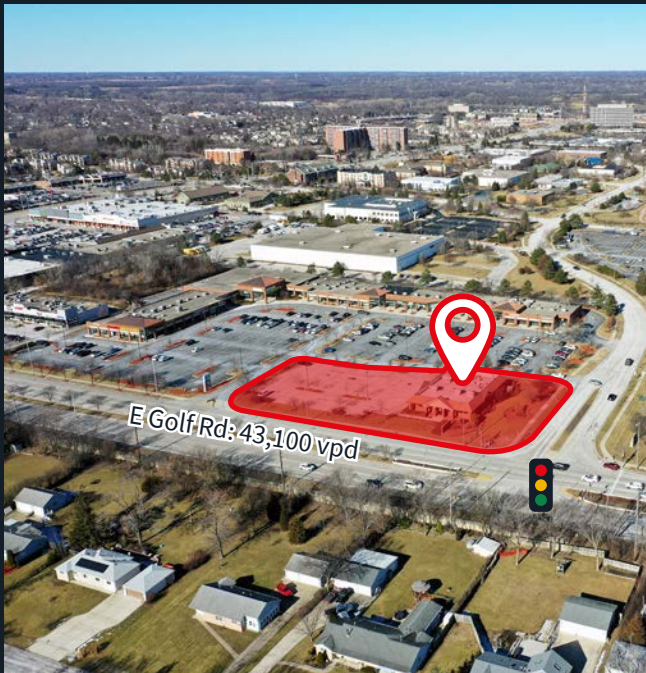
Jose Gonzalez
Executive Vice President
+1 312 228 2155
jose.o.gonzalez@jll.com

Courtney Rouleau
Vice President
+1 312 228 3431
courtney.rouleau@jll.com



Property overview & demographics

- Outlot building with dedicated monument sign and rare traffic light entrance on Golf Road available for lease (separately owned from Copley Center)
- Options for build to suit, ground lease, or demising of existing building
- Copley Center benefits from its outstanding visibility and strong traffic counts with approximately 43,100 cpd on Golf Road, and 33,000 on Roselle Road
- Only outlot available on Golf Road, ideal for medical offices, restaurants, or drive-thrus
- High barrier to entry in this sought-after market
- Schaumburg features the largest retail corridor in the state of Illinois outside of the city of Chicago and is anchored by the super-regional Woodfield Mall. This retail corridor includes approximately 6.8 million square feet of retail GLA with representation by virtually every major national and regional retailer



Address	216 E Golf Rd Schaumburg, IL 60173
Size	1.13 AC parcel Up to 6,770 SF available
Asking price	Upon request
Status	Vacant
Possession	Immediate

Co-tenants/area retailers

BOB'S DISCOUNT FURNITURE **KOHL'S** **petco**

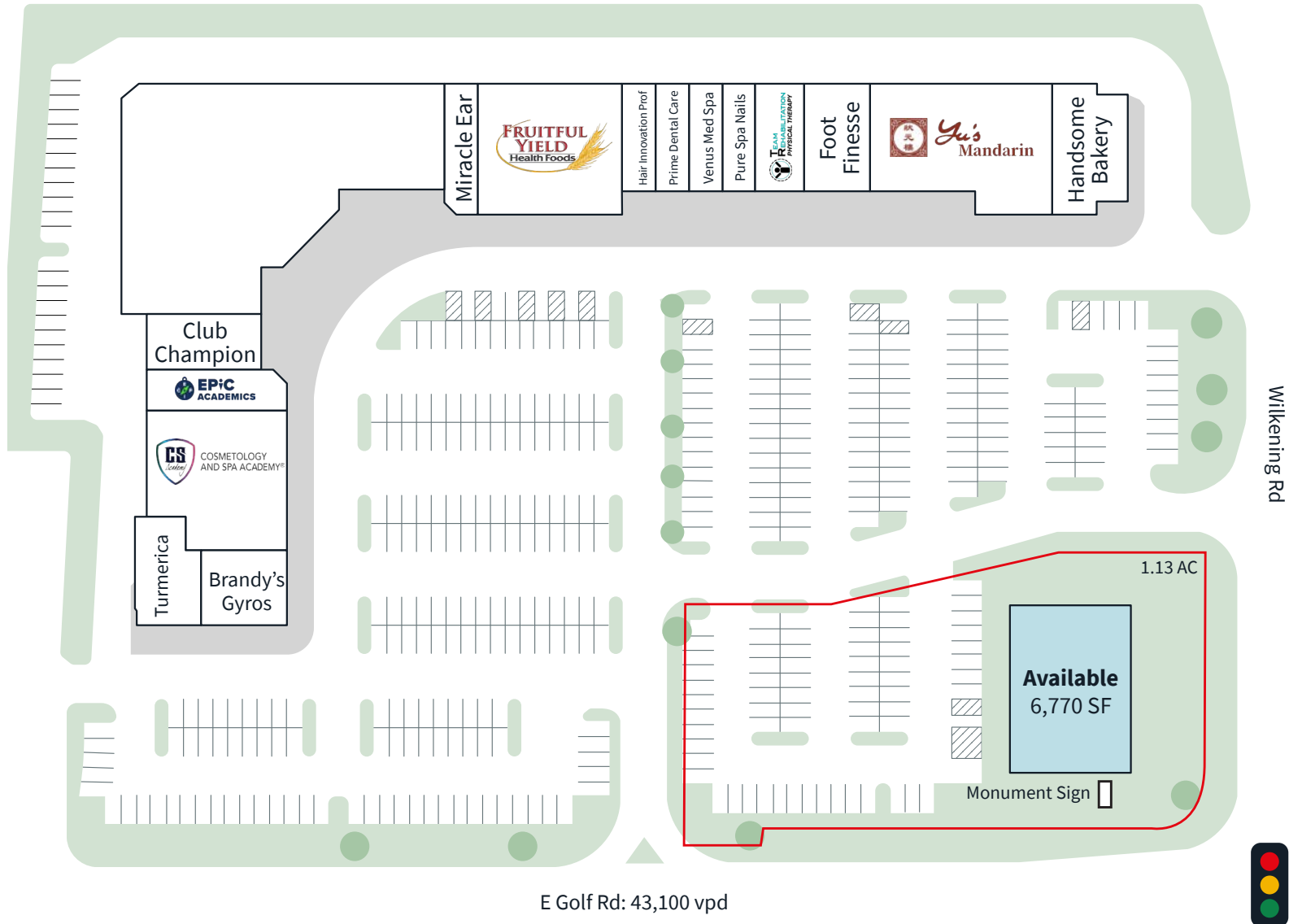
amazon

FRUITFUL YIELD
Health Foods

	1 mile	3 miles	5 miles
Population	13,468	97,026	250,576
Daytime population	17,964	131,128	297,358
Avg household income	\$93,363	\$123,204	\$126,673
Households	5,428	37,849	97,316

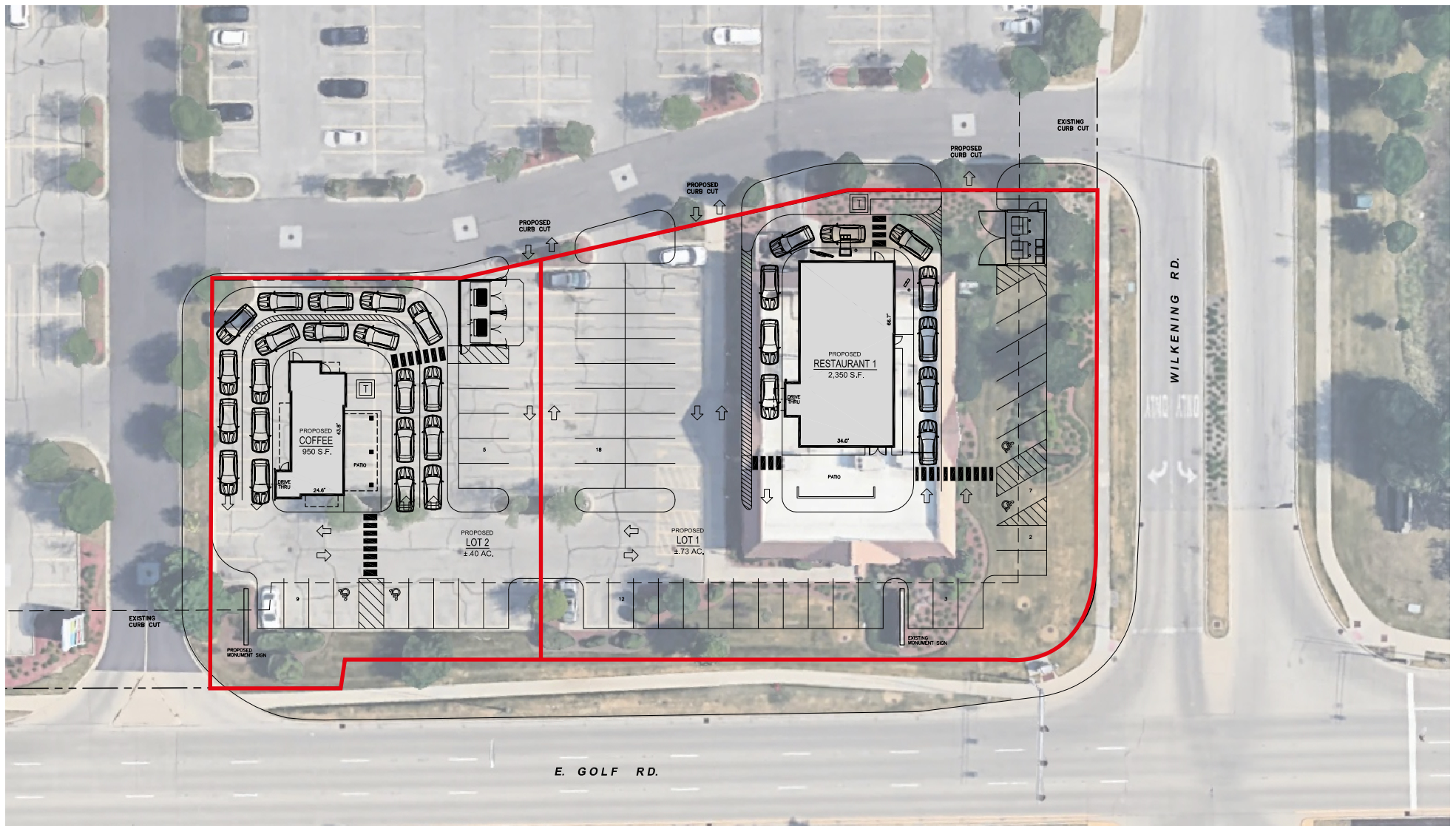


Site plan

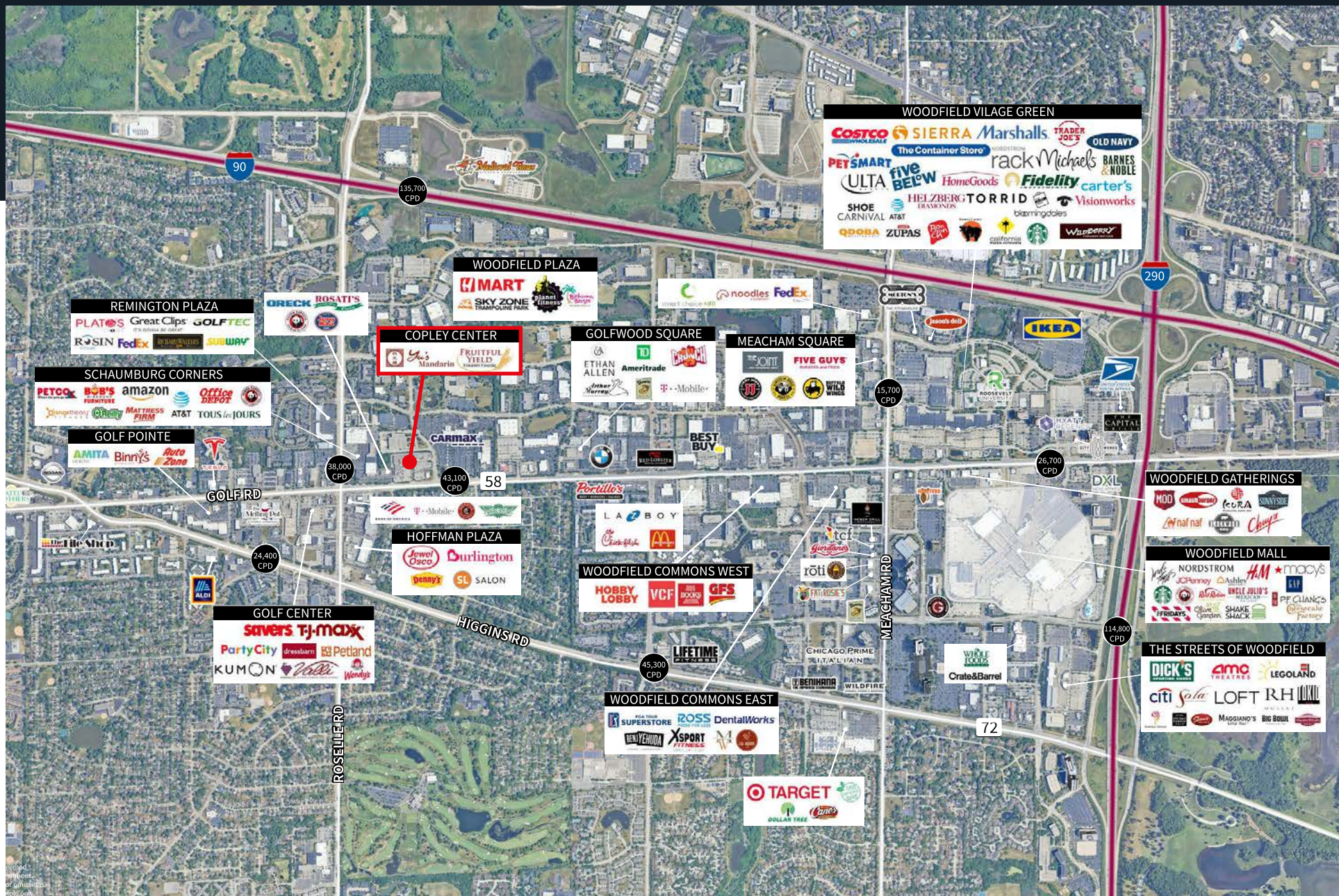


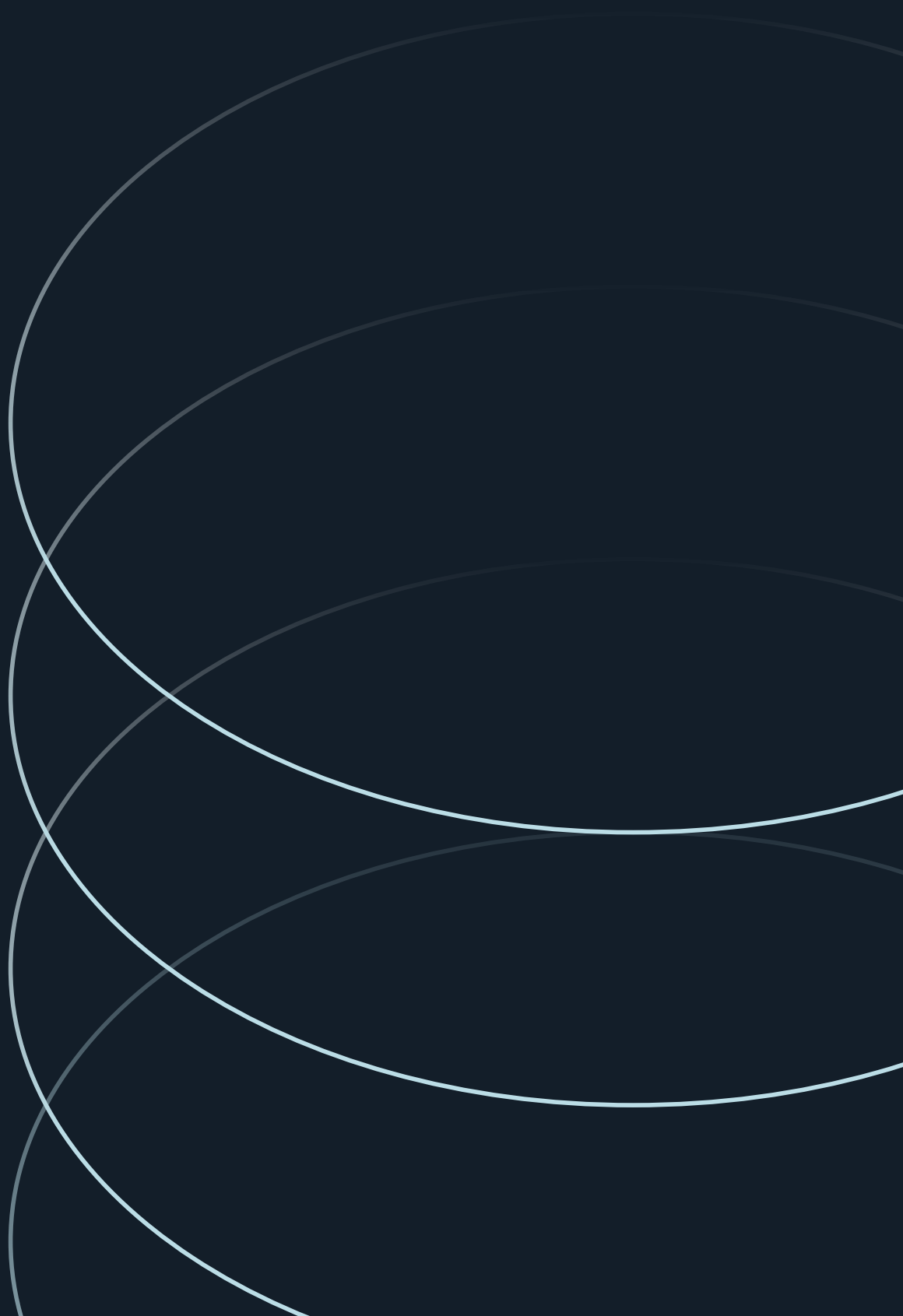


Proposed outlot development



Retail trade area





Jose Gonzalez

Executive Vice President

+1 312 228 2155

jose.o.gonzalez@jll.com

Courtney Rouleau

Vice President

+1 312 228 3431

courtney.rouleau@jll.com