

677
LAUREL
STREET



Jones Lang LaSalle Brokerage, Inc. License #01856260

Heart of San Carlos's Laurel Ave –
Retail Spaces Available
+/- 3,034 Sq. Ft.

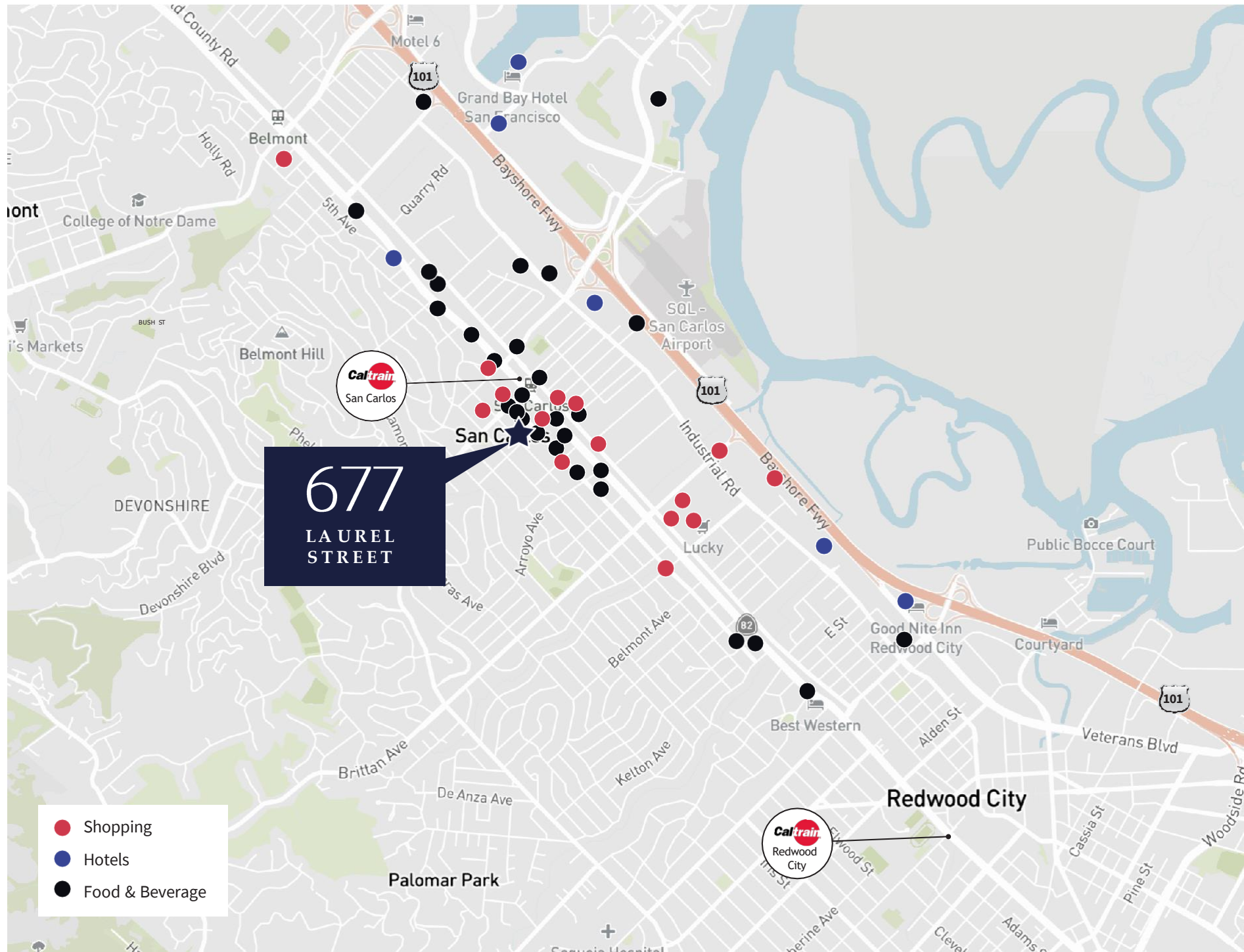


THE MARKET

The retail environment in downtown San Carlos is vibrant and bustling with activity. The area is home to a diverse mix of shops and boutiques, ranging from trendy and upscale clothing stores to quaint and charming specialty stores. Recent tenants to open include Paris Baguette and SC Noodle House.

The streets are lined with beautiful storefronts, inviting pedestrians to explore and shop. An initiative from the city includes a \$1,000,000 investment in the enhancement of the Downtown core to include new landscaping and walking areas.

There are also several cafes and restaurants in the area, creating a lively and welcoming atmosphere. From stylish fashion and accessories to unique home decor and gifts, downtown San Carlos offers something for every shopper.



677
LAUREL
STREET

THE NEIGHBORHOOD



136,763

Local Population



39.6

Median age



52,108

Households



\$272,024

Average household
income



7,560

Businesses



84,193

Employees

Source: Sites USA 2023. 3 mile radius

+/-4,051 SQ. FT. LEASED TO SPOON+FORK



677 LAUREL- PATXIS; SUITE 'B' & THE LIVING ROOM; SUITE 'C'

MARKETING PACKAGE



SPACE DETAILS



Best block of
Laurel Street



Current tenant on
month-to-month



Recently renovated
restaurant

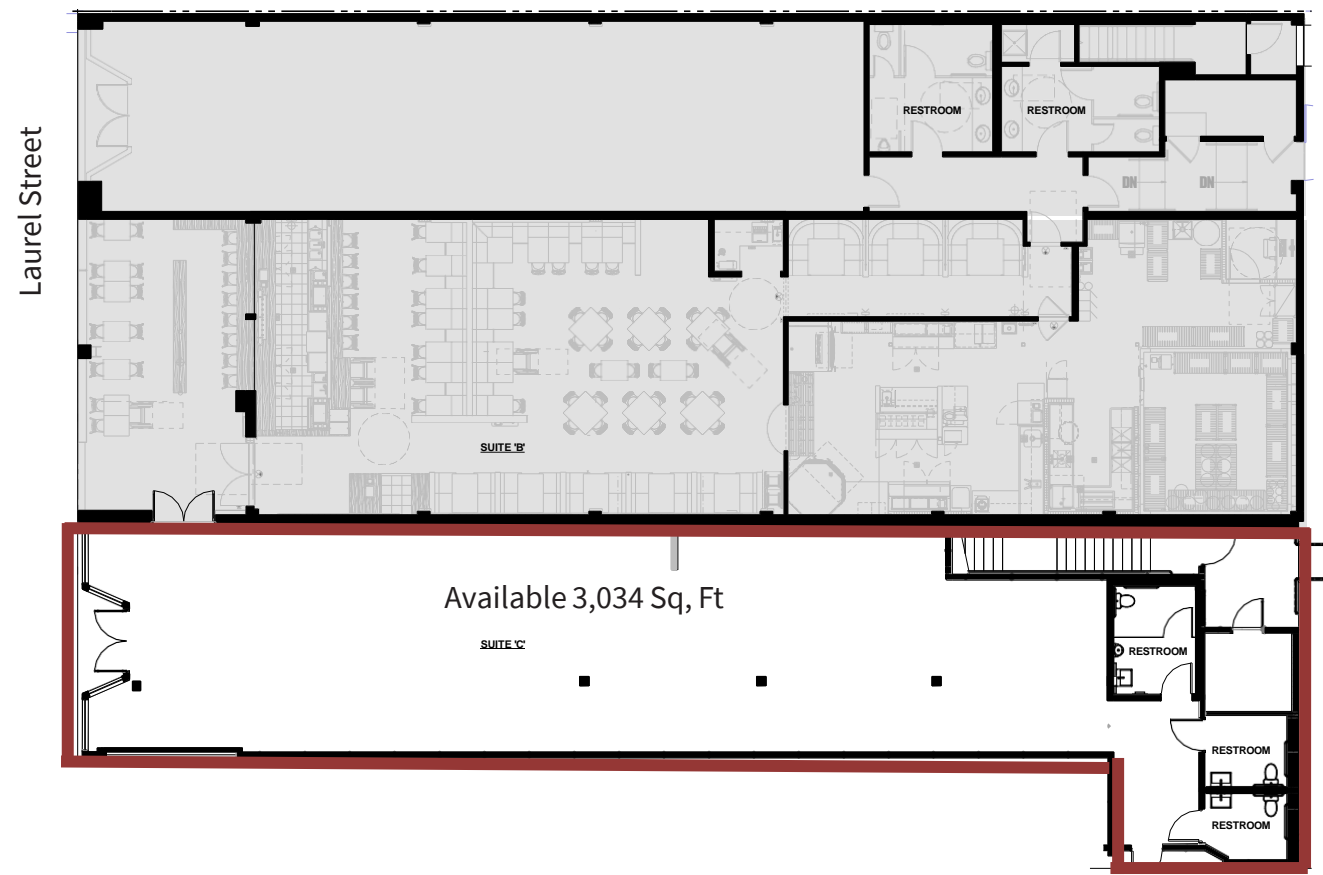


Excellent indoor/
outdoor patio



FFE to be negotiated

+/-3,034 SQ. FT. AVAILABLE



SPACE DETAILS

-  Prime Visibility
-  Vanilla Shell Condition
-  Newly remodeled ADA Restroom
-  Ideal for fitness, boutique or service retail

677

LAUREL STREET

LAURA TINETTI

+1 415 228 3072

laura.tinetti@jll.com

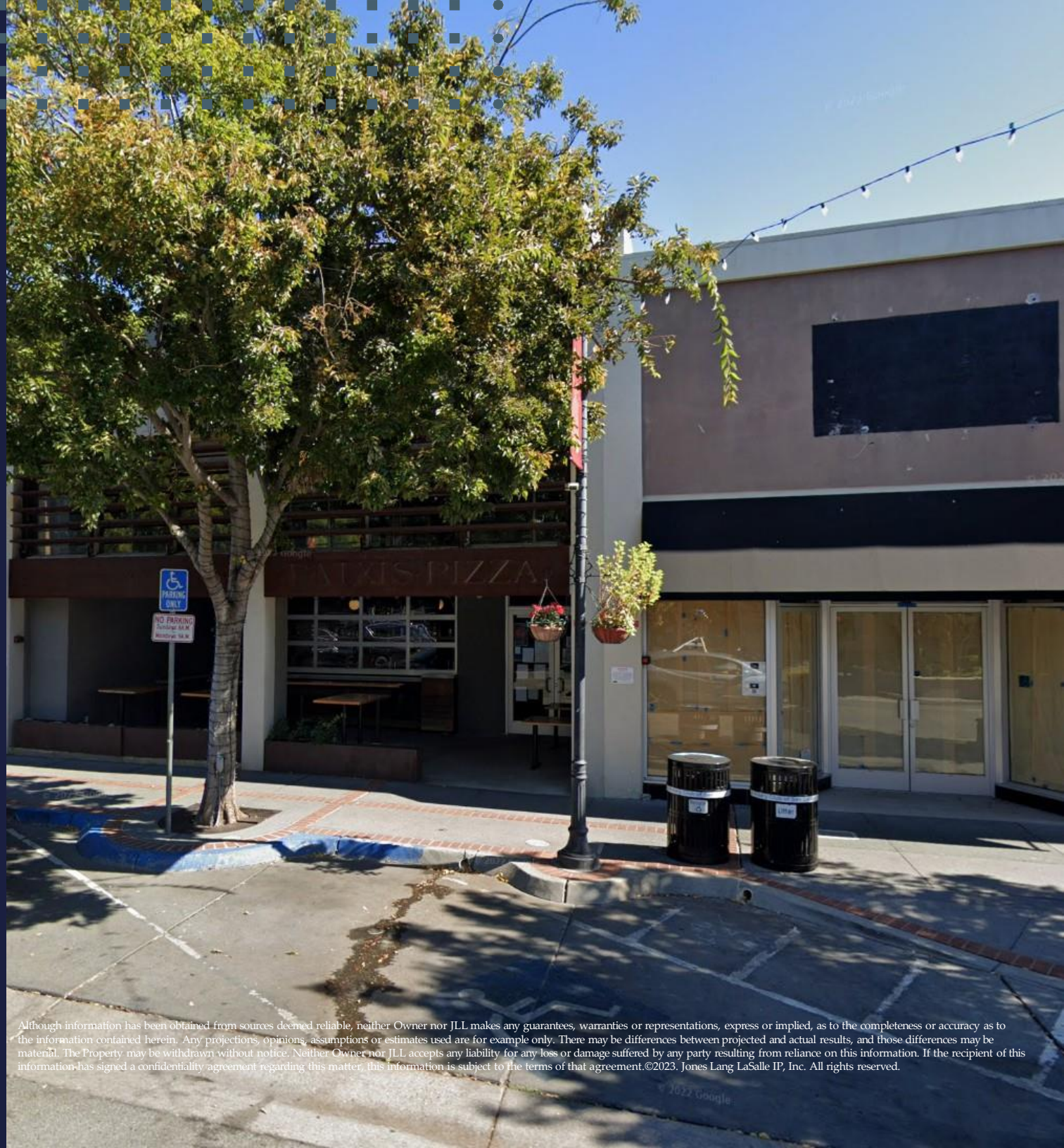
License # CA-01358500

JEFF BADSTUBNER

+1 415 395 4916

jeff.badstubner@jll.com

License # CA-01155279



Although information has been obtained from sources deemed reliable, neither Owner nor JLL makes any guarantees, warranties or representations, express or implied, as to the completeness or accuracy as to the information contained herein. Any projections, opinions, assumptions or estimates used are for example only. There may be differences between projected and actual results, and those differences may be material. The Property may be withdrawn without notice. Neither Owner nor JLL accepts any liability for any loss or damage suffered by any party resulting from reliance on this information. If the recipient of this information has signed a confidentiality agreement regarding this matter, this information is subject to the terms of that agreement. ©2023. Jones Lang LaSalle IP, Inc. All rights reserved.