



For sublease

7,897 - 21,003 RSF

Sublease through July 31, 2027

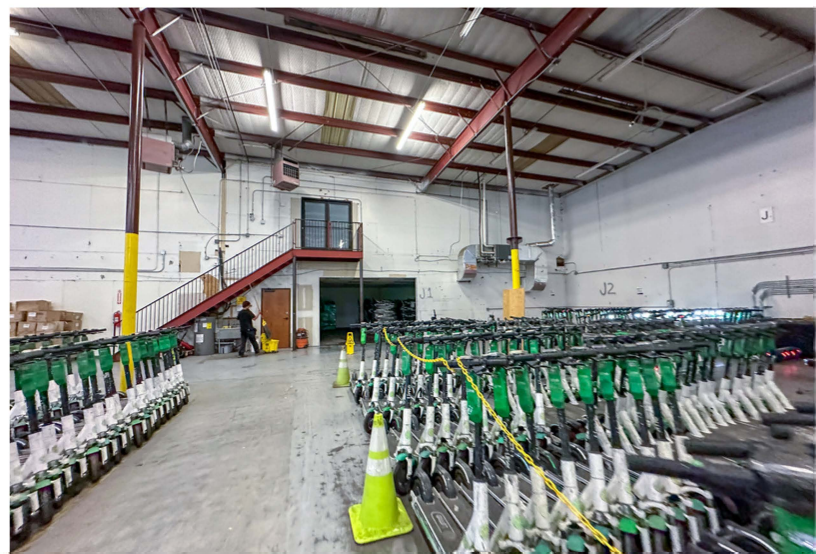
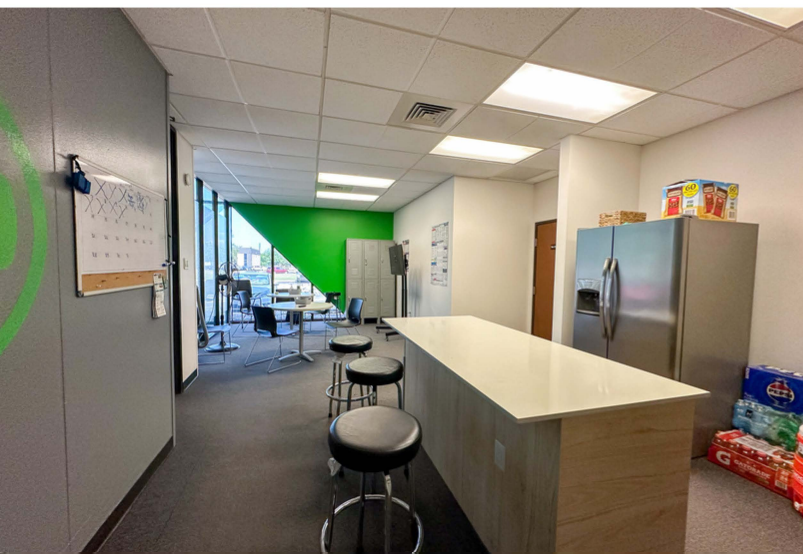
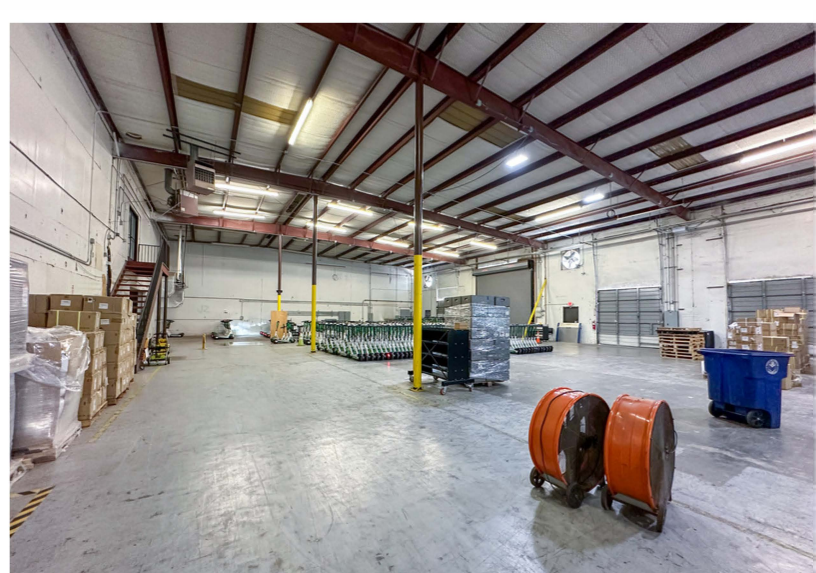
5910 Techni Center Drive
Austin, TX 78721

Property specifications

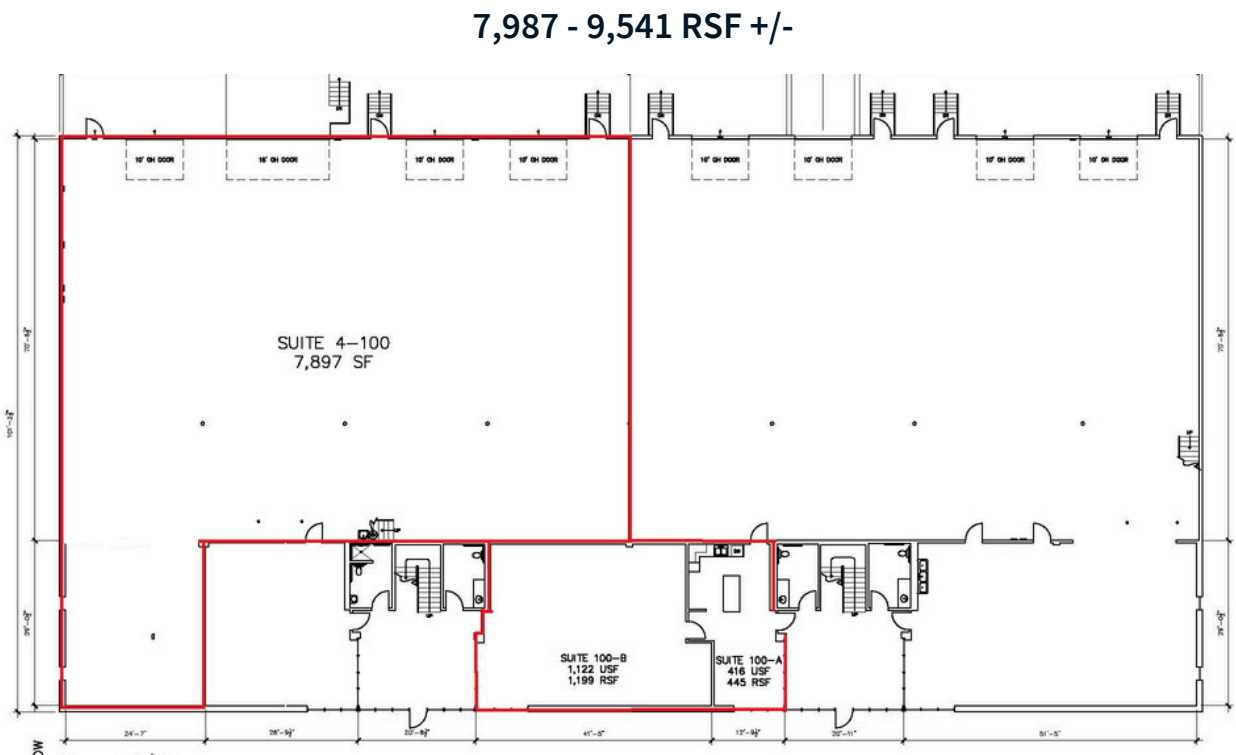
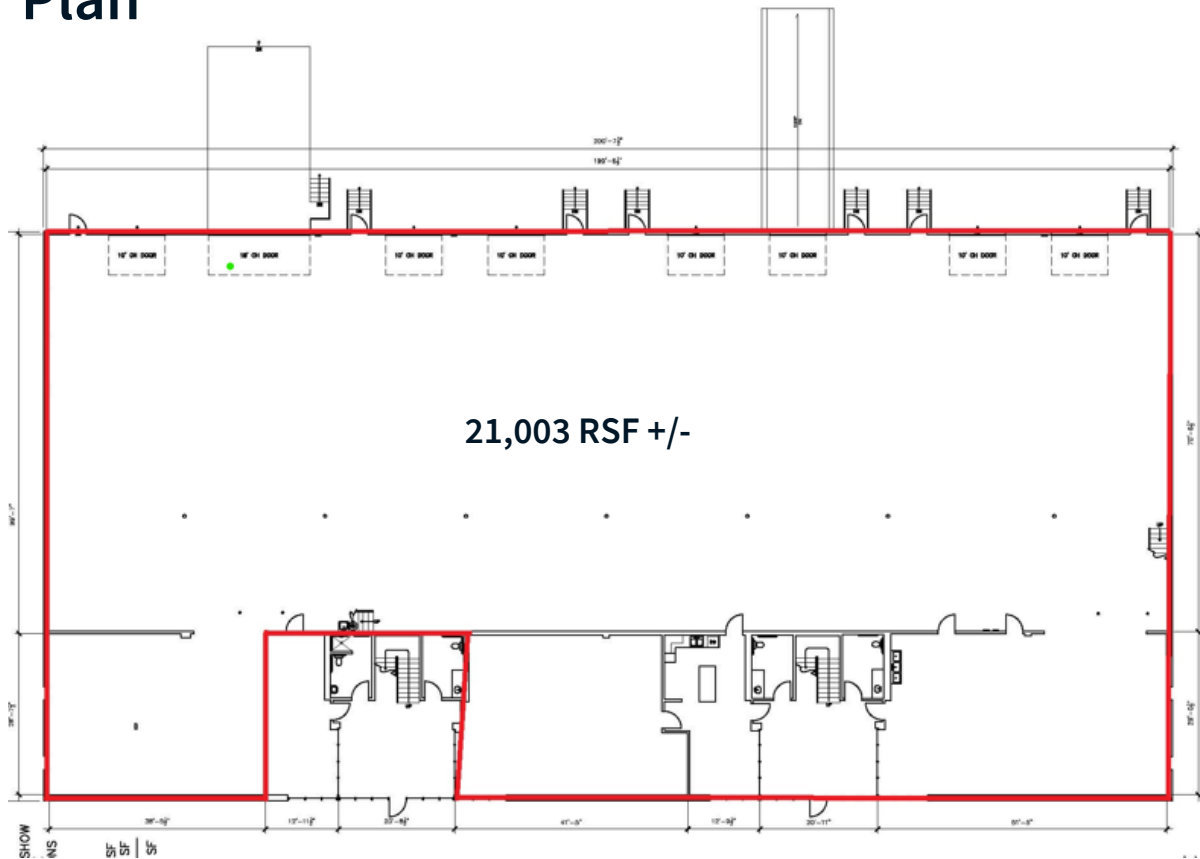
- 7,897 - 21,003 RSF
- 19' - 21' Clear height
- Up to 7 dock doors, 1 ramped door
- 80 +/- Car parks
- 3 Phase, 400 amp service
- Concrete tilt wall construction
- Flexible terms
- Dead storage option available
- Call Broker for pricing

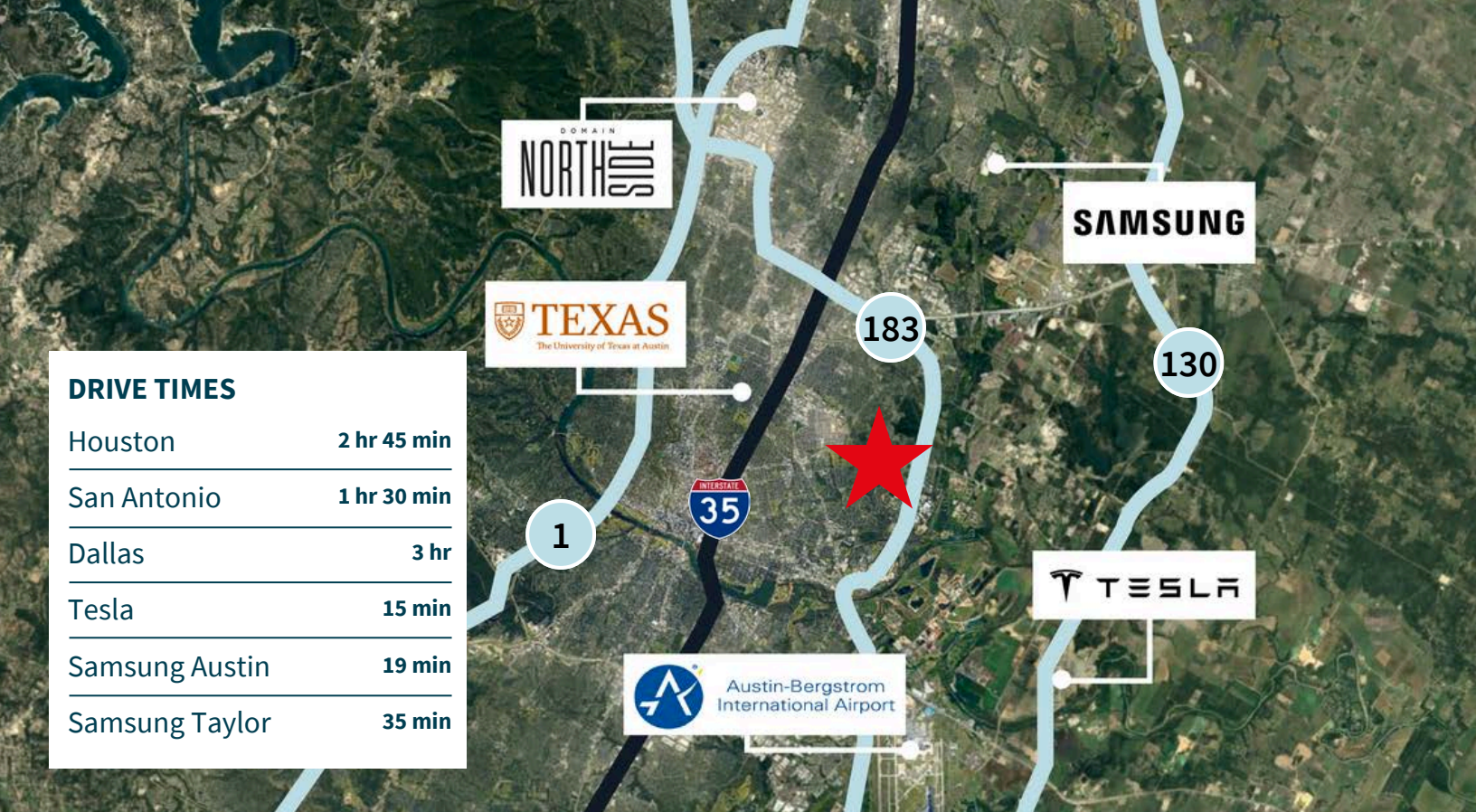
Alexx Montanez
alex.montanez@jll.com
+1 916 812 7135

jll.com



Floor Plan





Route to 183 Northbound



Route to 183 Southbound



Alexx Montanez
alex.montanez@jll.com
+1 916 812 7135

Although information has been obtained from sources deemed reliable, neither Owner nor JLL makes any guarantees, warranties or representations, express or implied, as to the completeness or accuracy as to the information contained herein. Any projections, opinions, assumptions or estimates used are for example only. There may be differences between projected and actual results, and those differences may be material. The Property may be withdrawn without notice. Neither Owner nor JLL accepts any liability for any loss or damage suffered by any party resulting from reliance on this information. If the recipient of this information has signed a confidentiality agreement regarding this matter, this information is subject to the terms of that agreement. © 2023 Jones Lang LaSalle IP, Inc. All rights reserved. Portions of this work product were created with generative AI. Jones Lang LaSalle Brokerage, Inc. CA License #01856260 515 S. Flower Street, Suite 1300, Los Angeles, CA 90071