

Village Green

Retail space for lease



7350 Nolensville Road

Nolensville, TN 37135

William Shell

Managing Director
615 928 5316
william.shell@am.jll.com

Harris McCullough

Associate
615 928 5244
harris.mccullough@am.jll.com

Property specifications

- Publix anchored 81,623 SF specialty retail center
- Excellent visibility from the main thoroughfare and retail corridor
- Located 3.8 miles from the existing Grocery options and better surrounded by the residential density, making it the new dominant grocery anchored center in the market

Shop space is available up to 9,750 SF

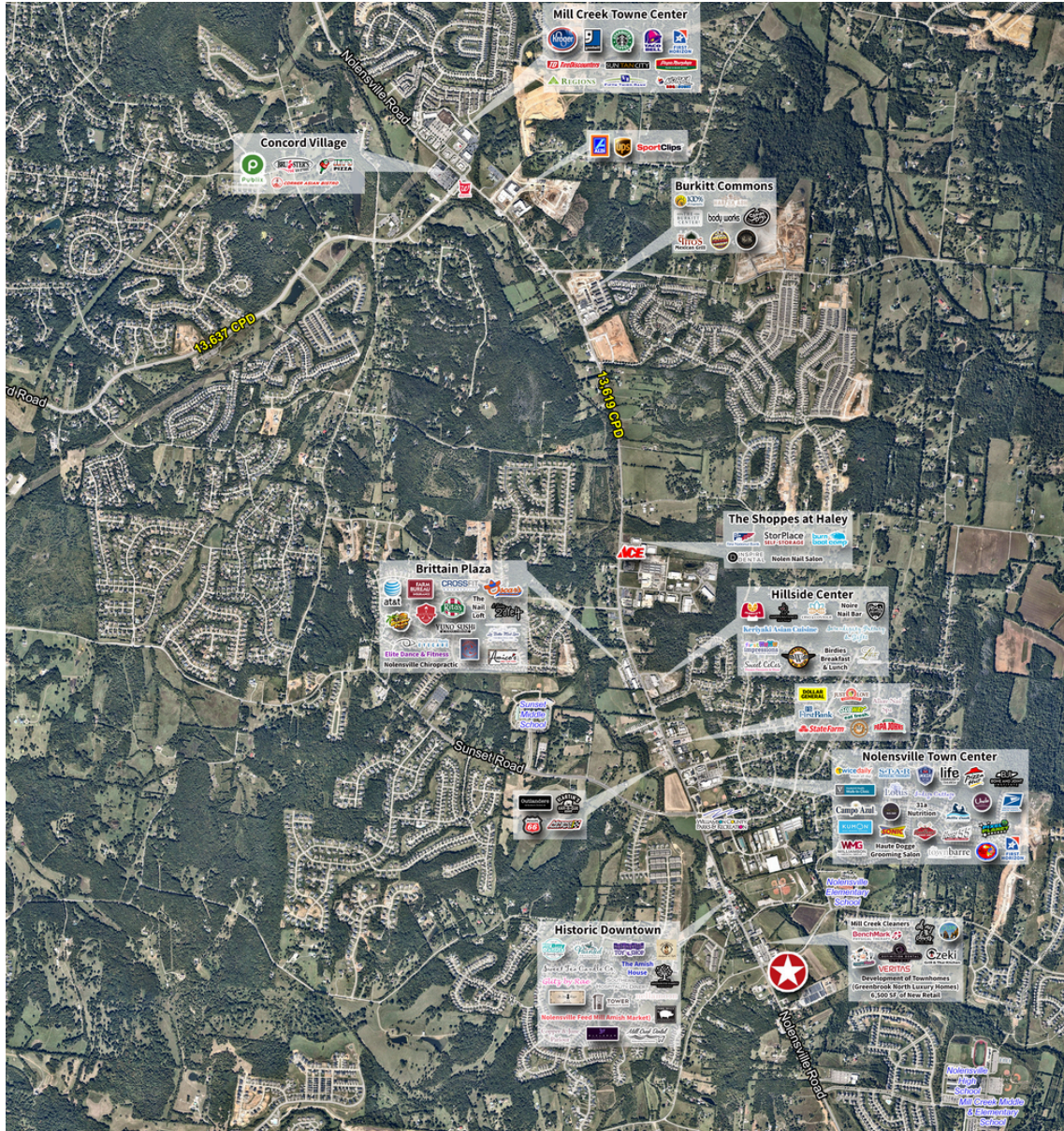


Disclaimer

Although information has been obtained from sources deemed reliable, neither Owner nor JLL makes any guarantees, warranties or representations, express or implied, as to the completeness or accuracy as to the information contained herein. Any projections, opinions, assumptions or estimates used are for example only. There may be differences between projected and actual results, and those differences may be material. The Property may be withdrawn without notice. Neither Owner nor JLL accepts any liability for any loss or damage suffered by any party resulting from reliance on this information. If the recipient of this information has signed a confidentiality agreement regarding this matter, this information is subject to the terms of that agreement. ©2023 Jones Lang LaSalle IP, Inc. All rights reserved.

Village Green

Market Statistics



1 Mile

6,605
2022 Population

\$579,225
Average Home Value

4,655
2022 Daytime Population

\$193,936
Average Household Income

4.26%
Population Growth

36.1
Median Age

3 Mile

23,929
2022 Population

\$587,661
Average Home Value

16,260
2022 Daytime Population

\$189,468
Average Household Income

4.3%
Population Growth

37.1
Median Age

5 Mile

62,782
2022 Population

\$571,606
Average Home Value

41,118
2022 Daytime Population

\$176,987
Average Household Income

3.84%
Population Growth

37.2
Median Age

Village Green

Overview



Location Overview

Nolensville is located in the panoramic rolling hills of northeastern Williamson County; the wealthiest county on Tennessee. The community still preserves a small-town feel and rural beauty while consistently showing rapid growth (one of the highest in the Nashville MSA) in both residential communities and commercial businesses. Nolensville is known for its antique district, historic sites and award-winning school system.



Village Green

Retail space for lease



JLL

William Shell
Managing Director
615 928 5316
william.shell@jll.com

Harris McCullough
Associate
615 928 5244
harris.mccullough@jll.com

JLL Nashville
1801 West End Avenue, Suite 1200
Nashville, TN 37035

615 928 5300
us.jll.com

DISCLAIMER

Although information has been obtained from sources deemed reliable, neither Owner nor JLL makes any guarantees, warranties or representations, express or implied, as to the completeness or accuracy as to the information contained herein. Any projections, opinions, assumptions or estimates used are for example only. There may be differences between projected and actual results, and those differences may be material. The Property may be withdrawn without notice. Neither Owner nor JLL accepts any liability for any loss or damage suffered by any party resulting from reliance on this information. If the recipient of this information has signed a confidentiality agreement regarding this matter, this information is subject to the terms of that agreement. ©2023 Jones Lang LaSalle IP, Inc. All rights reserved.