



CHARLOTTE, NC

Toringdon Place

12135 N Community House Rd | Charlotte, NC
Retail Opportunities for Lease



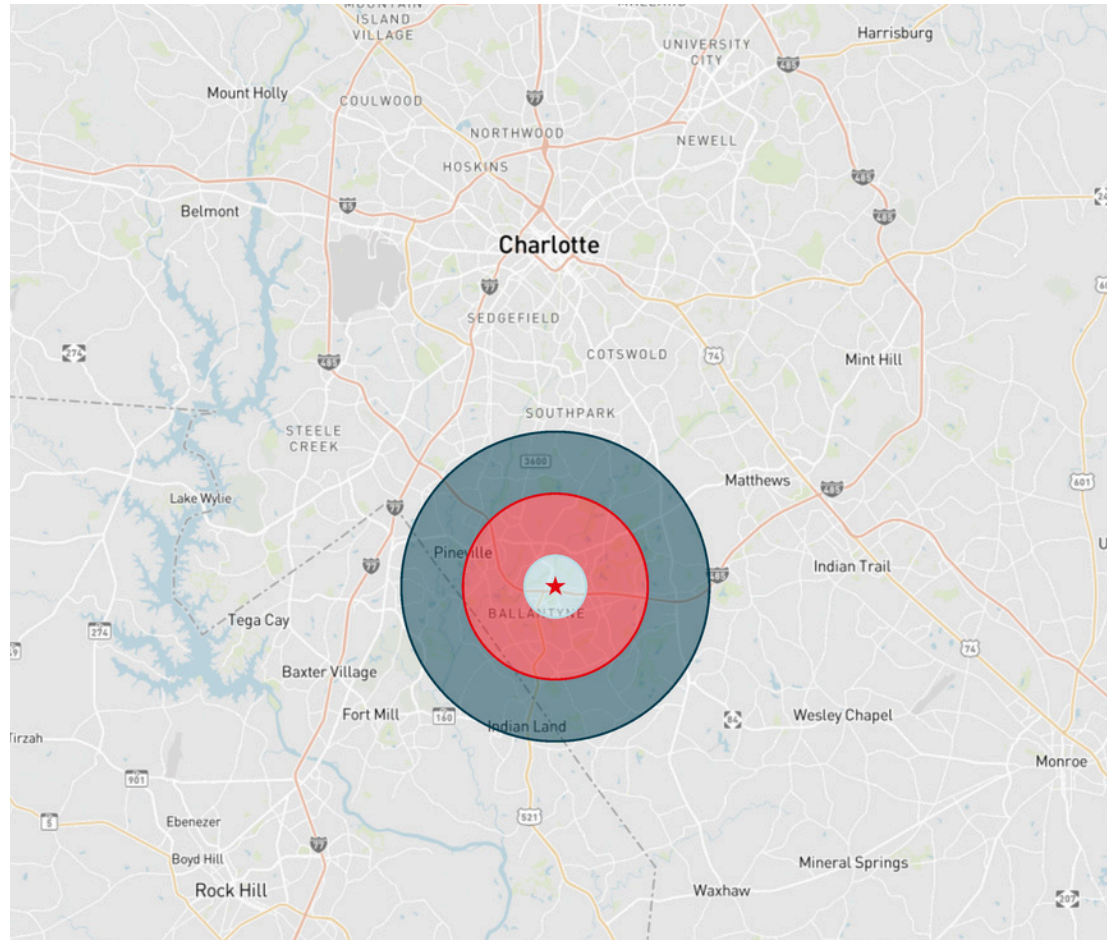
Property Information

12135 N Community House Rd
Charlotte, NC 28277

Set within the heart of Ballantyne neighborhood, Toringdon Place, a $\pm 12,500$ SF retail center, will seamlessly connect residents, professionals, and visitors with essential retail and dining options.

Property Highlights

- $\pm 12,500$ SF retail availability
- Excellent visibility and access at hard-corner signalized intersection
- Situated within established Toringdon Office Park (22,919+ employees)
- Wegmans grocery to be built 0.25 mi south along North Community House Rd
- Located directly adjacent to:
 - 750,000 SF of Class-A office
 - 445 luxury apartment units
 - 120-key hotel



	1 mile	3 miles	5 miles
Total Population	8,378	89,161	204,495
Total Households	3,755	36,693	80,993
Median Household Income	\$104,644	\$111,032	\$120,540
Median Age	38	39.6	39.6

Esri, 2025

Market Overview



Site Overview



Toringdon Circle
Shopping Center



Toringdon Market



SITE

I-485 ± 104,001 VPD

Johnston Rd ± 41,374 VPD

The Bowl @ Ballantyne
[solidcore] NORTH



FUTURE
Wegmans

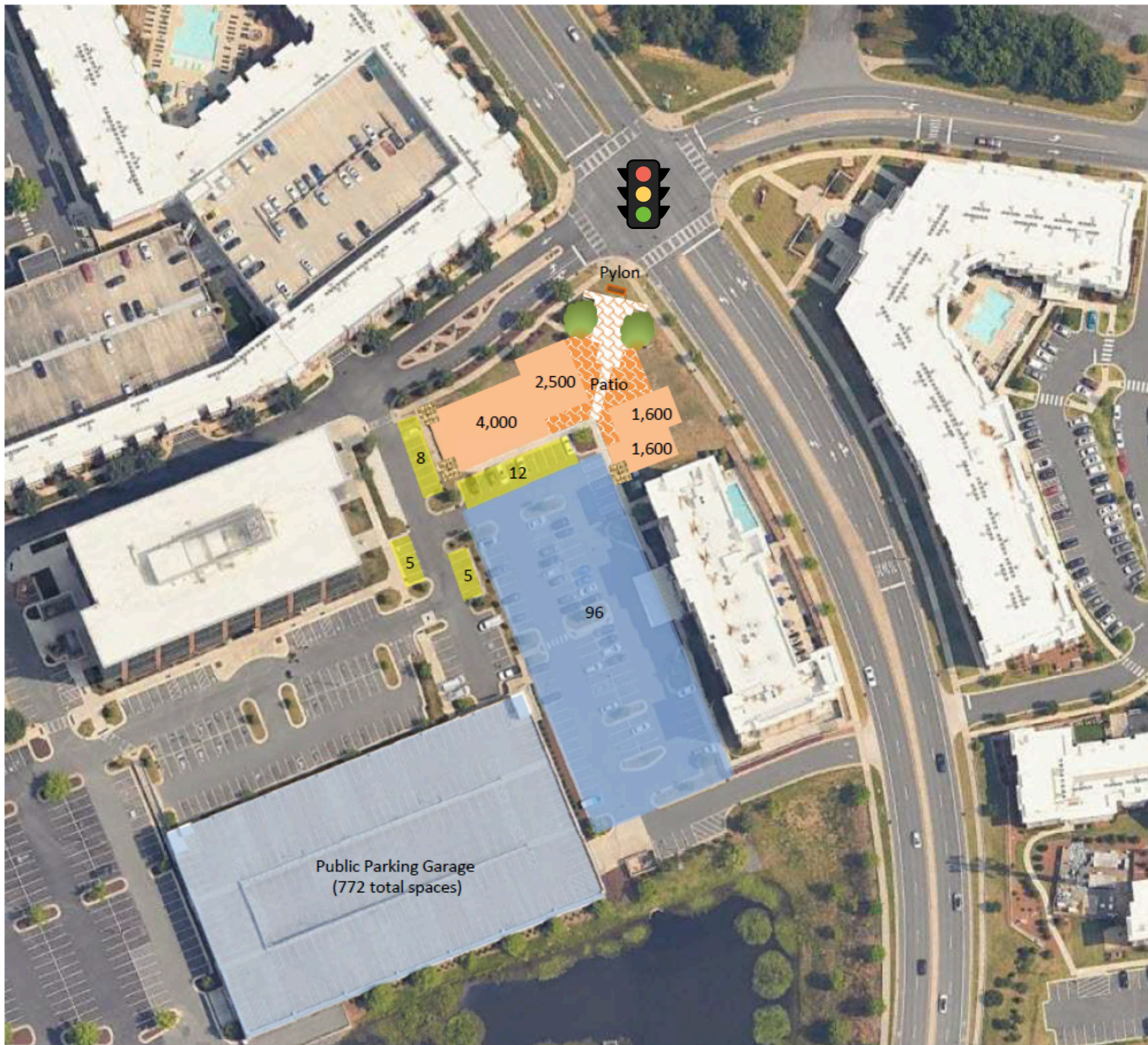
Legend

Shared Parking

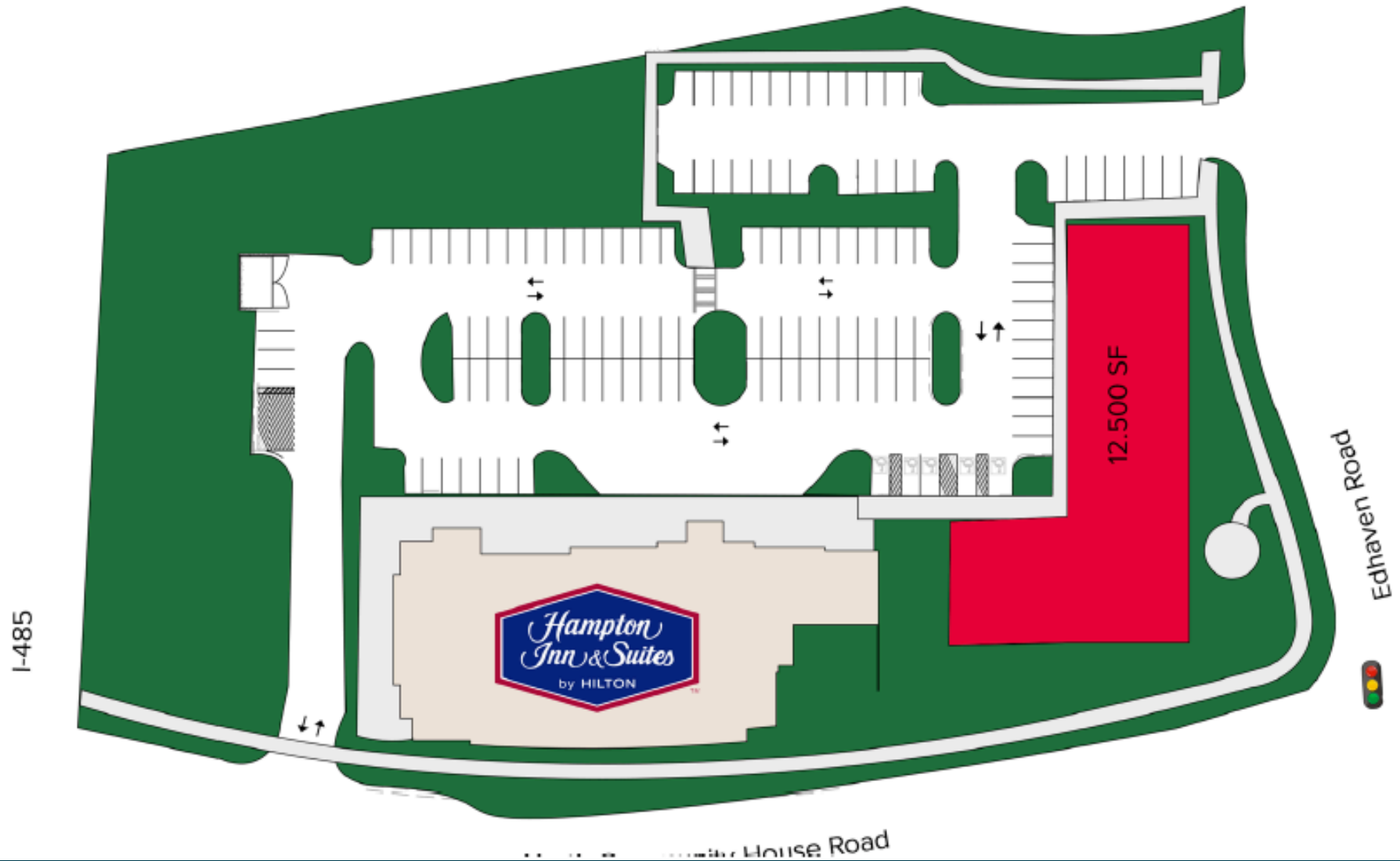
- Surface – 96 spaces
- Garage – 772 spaces

Retail Only Parking

- Surface – 30 spaces



Site Plan



Contact Us:

Margot Bizon

Margot.Bizon@jll.com
+1 704 804 5779

Lindsay Stafford

Lindsay.Stafford@jll.com
+1 980 819 3837

