



For sale

3.205 AC of industrial
land zoned M-1A
available in Grimes

**1255 - 1305 SE 25th St
Grimes, IA 50311**

Availability: 3.205 AC

Sale price: \$7.50 PSF (\$1,047,073)

Property Specifications

- Zoning: M-1A
- Close proximity to I-35 & I-80, providing access across the Midwest
- The completed Urban Loop provides superior interstate access
- These lots are in the ideal location in an established industrial submarket

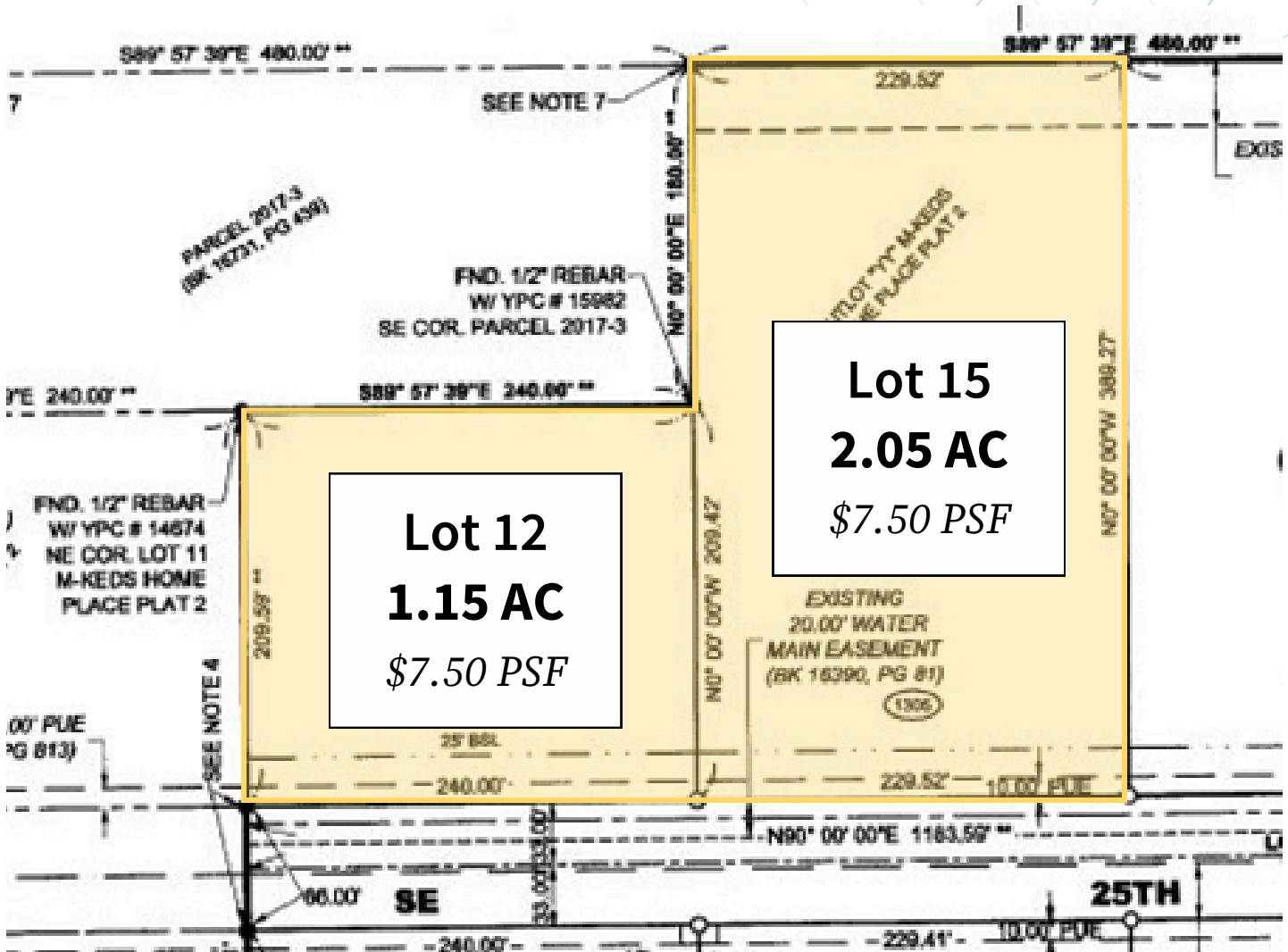
Austin Hedstrom, SIOR
Executive Vice President
austin.hedstrom@jll.com
+1 515 414 1767

Tanner Hedstrom
Vice President
tanner.hedstrom@jll.com
+1 515 745 2734

Marcus R. Pitts, CCIM, SIOR
Senior Managing Director
marcus.pitts@jll.com
+1 515 556 4727



Plat

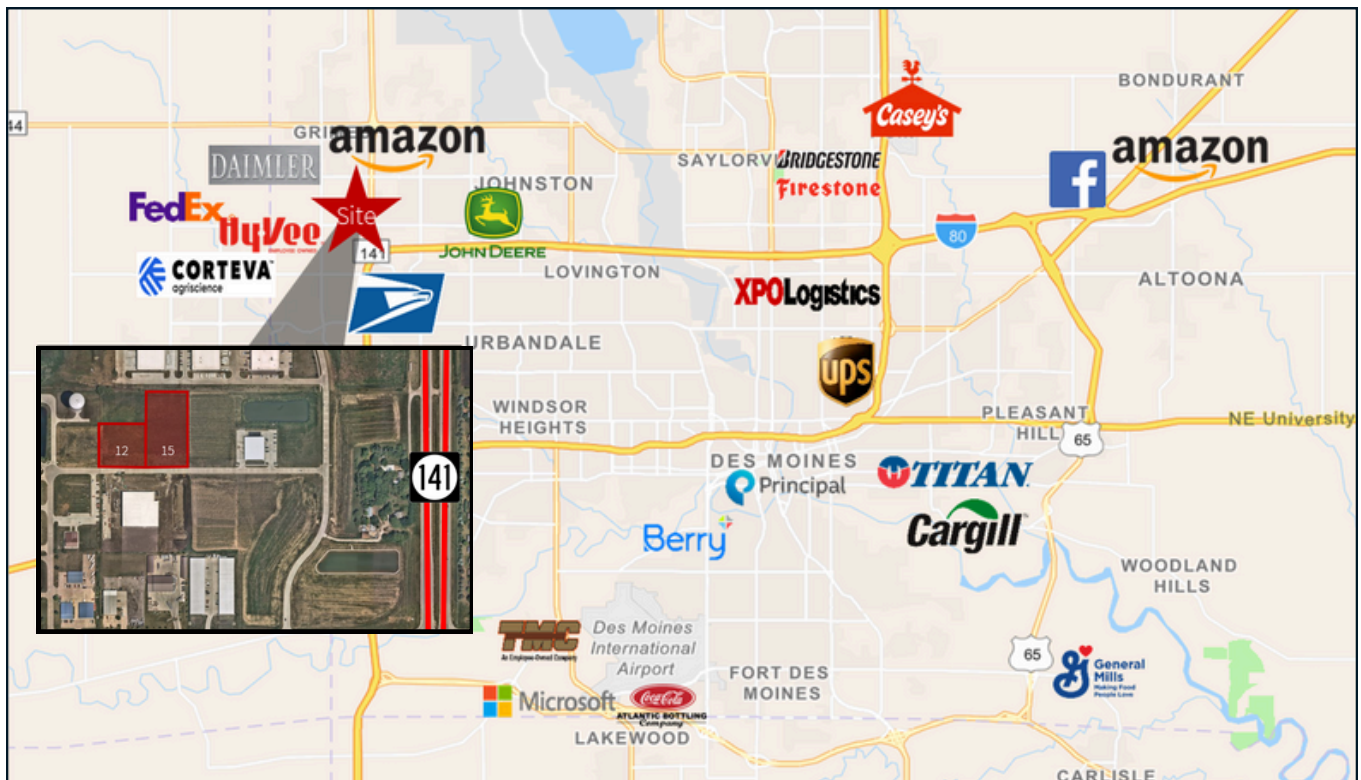


Demographics

	1Mile	3 Miles	5Miles
Population	2,594	45,572	122,121
Households	1,065	17,127	47,373
Average HHIncome	\$91,792	\$137,227	\$122,572

For sale

1305 - 1255 SE 25th St | Grimes, Iowa 50311



Contact broker for additional information

Austin Hedstrom, SIOR
austin.hedstrom@jll.com
+1 515 414 1767

Tanner Hedstrom
tanner.hedstrom@jll.com
+1 515 745 2734

Marcus R. Pitts, CCIM, SIOR
marcus.pitts@jll.com
+1 515 556 4727

Although information has been obtained from sources deemed reliable, neither Owner nor JLL makes any guarantees, warranties or representations, express or implied, as to the completeness or accuracy as to the information contained herein.
© 2024 Jones Lang LaSalle IP, Inc. All rights reserved.

jll.com/des-moines