



FORMERLY EASTMAN KODAK HEADQUARTERS //////////////////////////////////////

JONES LANG LASALLE BROKERAGE, INC. | CA LICENSE #01856260



# A CREATIVE CAMPUS FOR NEXT-GEN MAKERS

*HOLLYWOOD*  
MEDIA CAMPUS



## 1017 N LAS PALMAS OFFICE/POST-PRODUCTION

AVAILABLE NOW

### SIZE

1ST FLOOR: 17,094 RSF  
2ND FLOOR: 25,126 RSF  
3RD FLOOR: 25,131 RSF

### CEILING HEIGHT

12' - 15'2"  
10'6" - 12'6"  
12'6" - 14'6"

**TOTAL: 67,351 RSF**

## 1017 N LAS PALMAS SOUNDSTAGES

AVAILABLE JAN 1, 2027

### SIZE

1ST FLOOR: 21,063 RSF

### CEILING HEIGHT

14'6" - 35'

## 6700 SANTA MONICA CREATIVE OFFICE

AVAILABLE JAN 1, 2027

### SIZE

1ST FLOOR: 10,550 RSF  
2ND FLOOR: 9,128 RSF

**TOTAL: 19,678 RSF**

**TOTAL BUILDING SIZE: 108,092 SF**

CALL BROKER FOR LEASE TERMS AND ASKING RATE //////////////////////////////////





# BUILDING HIGHLIGHTS

- BOUTIQUE, STAND-ALONE CREATIVE CAMPUS IN THE HEART OF HOLLYWOOD
- INTERCONNECTING STAIRCASE BETWEEN 2ND AND 3RD FLOOR OF 1017 N LAS PALMAS
- HIGH END OPEN KITCHEN CONCEPT ON EACH FLOOR
- GATED, SECURE CAMPUS
- EQUIPPED WITH EDIT BAYS, COLOR/VO/AUDIO BAYS
- LARGE SCREENING ROOM WITH 44 SEATS
- FIVE (5) DOCK HIGH LOADING DOORS ON GROUND FLOOR
- PRIVATE BALCONY ON TOP FLOOR



SUNSET LAS PALMAS STUDIOS

1017 N LAS PALMAS  
| OFFICE AND POST PRODUCTION

SOUND STAGE

GATED ENTRYWAY

GATED ENTRYWAY

6700 SANTA MONICA BLVD | BOUTIQUE, CREATIVE OFFICE

SANTA MONICA BLVD

N LAS PALMAS AVE

# PROPERTY DETAILS

## HOLLYWOOD MEDIA CAMPUS

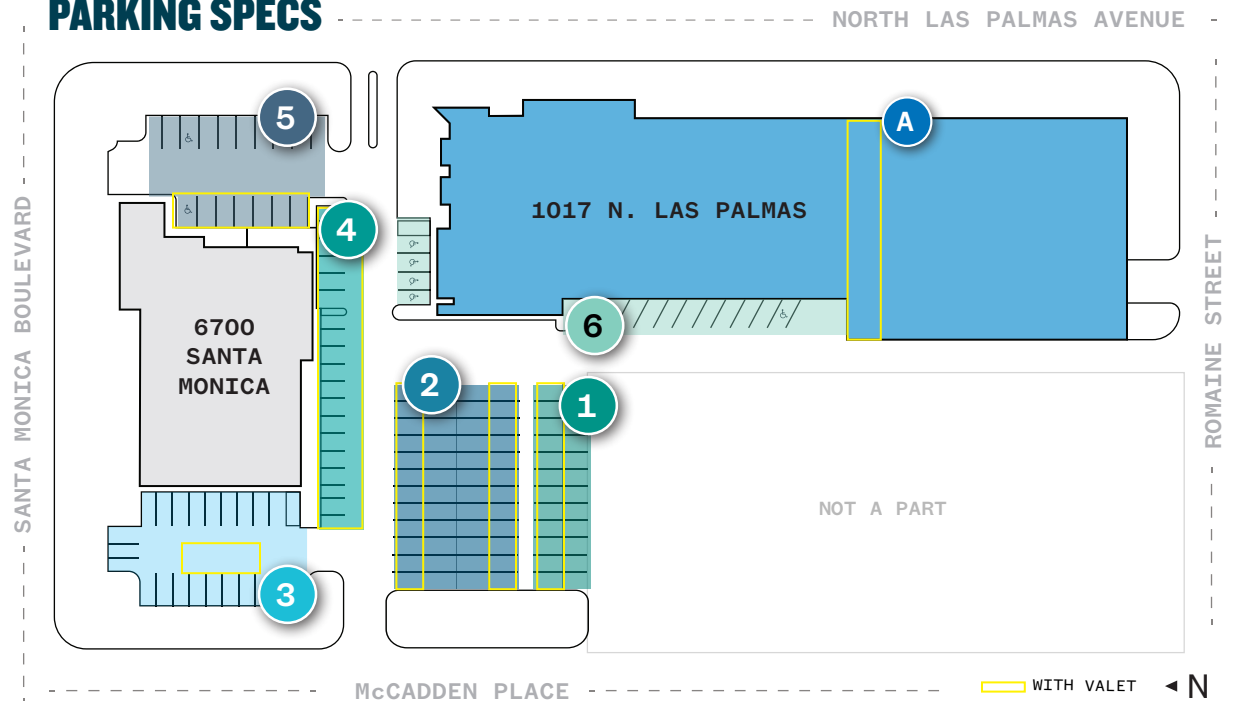
### BUILDING SPECS

BUILDING SIZE:	108,092 SF
SITE AREA:	2.973 ACRES
YEAR BUILT:	6700 SANTA MONICA BLVD – ENTRYWAY: 1929, REMAINDER: 1987 1017 N LAS PALMAS AVE – 1994 FULLY RENOVATED IN 2014
CEILING HEIGHT:	12'5" - 35'
APN:	5532026005 (NORTHWEST LOT) 5532026023 (6700 SANTA MONICA) 5532026031 (CENTER LOT) 5532026032 (CENTER LOT) 5532026033 (CENTER LOT) 5532026036 (1017 N PALMAS)
ZONING:	MR1-1-SN RESTRICTED INDUSTRIAL ZONE
MAX FAR:	1.5 (1.13 EXISTING)

### STAGE SPECS

POWER LOAD:	2,000 AMPS @ 277/480 VOLTS, 3-PHASE, 4-WIRE SERVICE
A/C CAPACITY:	2 LARGE TRANE PACKAGE UNITS w/ CAPACITY OF 50 AND 60 TONS
HEIGHT-TO-GRID:	20-25'
CEILING HEIGHT:	UP TO 35'
COLUMNLESS DIMENSIONS:	15,000 SF

### PARKING SPECS



	STRIPED	STACKED/TANDEM	TOTAL
<b>EXTERIOR</b>			
1 - SOUTH	13	16	29
2 - CENTER	24	24	48
3 - NORTHWEST	26	11	37
4 - CENTER STRIP	22	7	29
5 - NORTHEAST	11	5	16
6 - 1017 PERIMETER	19	N/A	19
<b>TOTAL EXTERIOR</b>	<b>115</b>	<b>63</b>	<b>178</b>
<b>INTERIOR</b>			
A - GARAGE	91	24	115
<b>TOTAL PARKING</b>	<b>206</b>	<b>87</b>	<b>293</b>



*HOLLYWOOD*  
MEDIA CAMPUS

**PUT YOURSELF  
ON DISPLAY**

SIGNAGE OPPORTUNITIES INCLUDING  
CAMPUS ENTRANCE ARCH, BUILDING TOP,  
+ MONUMENT





# ENERGY-FILLED NEIGHBORHOOD

DISCOVER  
HOLLYWOOD

**EXCEPTIONAL ACCESS  
TO GREATER L.A.**

## FOOD

RAO'S  
TARTINE SYCAMORE  
SIGHTGLASS COFFEE  
GIGI'S  
MAMA SHELTER  
TAO  
KATSUYA  
TENDER GREENS  
STARBUCKS  
GO GET EM TIGER  
FORMOSA CAFE

ROOFTOP DINING @ MAMA SHELTER



## ENTERTAINMENT

TCL CHINESE THEATRE  
HOLLYWOOD FOREVER  
DOLBY THEATRE  
HOLLYWOOD BOWL  
UNIVERSAL STUDIOS  
HOLLYWOOD PANTAGES

LIVE MUSIC @  
HOLLYWOOD BOWL



PILATES @ [SOLIDCORE]

## NECESSITIES

MOTHER'S  
TARGET  
BESTBUY  
SPROUTS  
RALPHS

**3 MINS**

FROM THE  
SYCAMORE DISTRICT

**5 MINS**

FROM WEST HOLLYWOOD +  
LARCHMONT VILLAGE

**7 MINS**

FROM THE  
SUNSET STRIP

**15 MINS**

FROM FROGTOWN

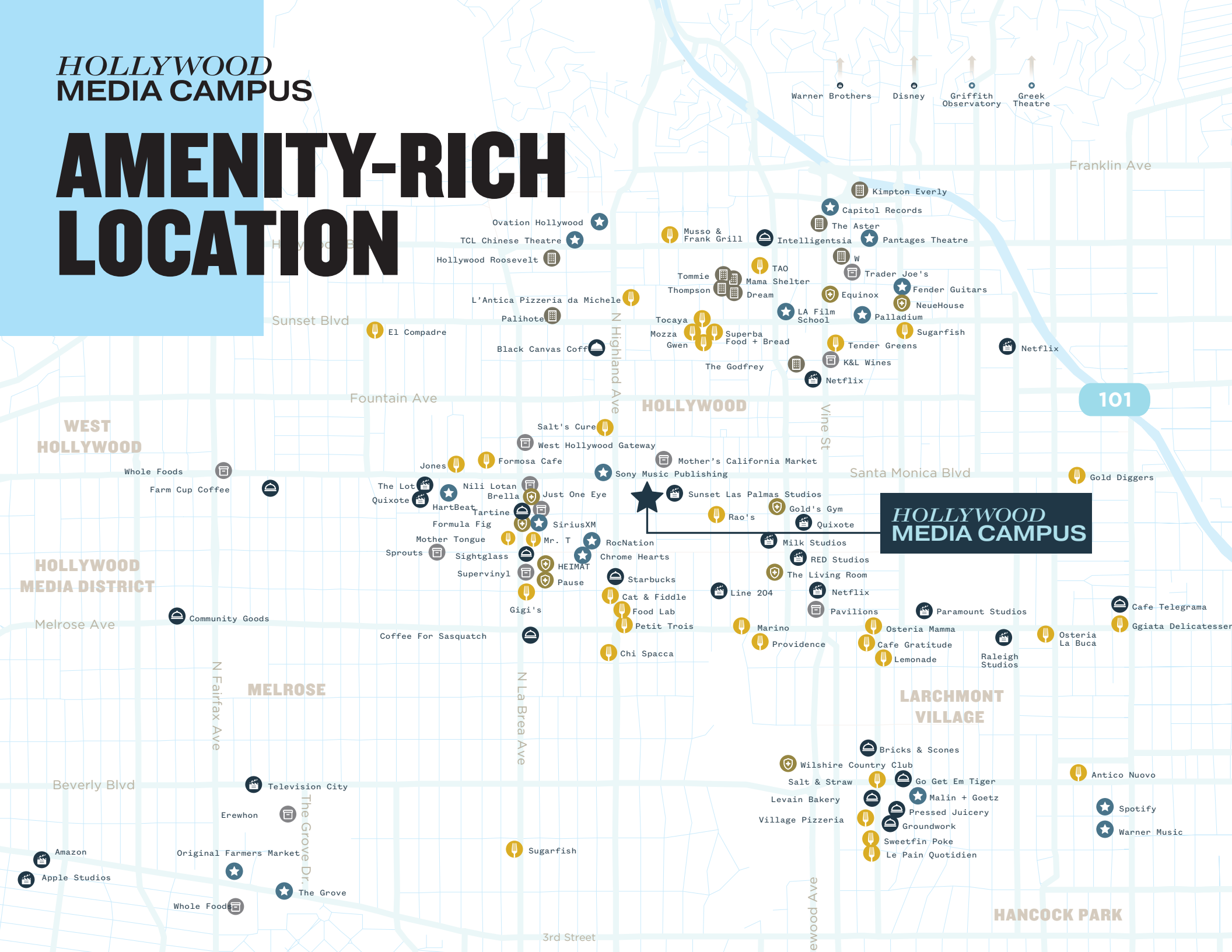
**LESS THAN 30 MINS**

FROM DOWNTOWN LA,  
BEVERLY HILLS + BURBANK

**HOLLYWOOD  
MEDIA CAMPUS**

# HOLLYWOOD MEDIA CAMPUS

# AMENITY-RICH LOCATION

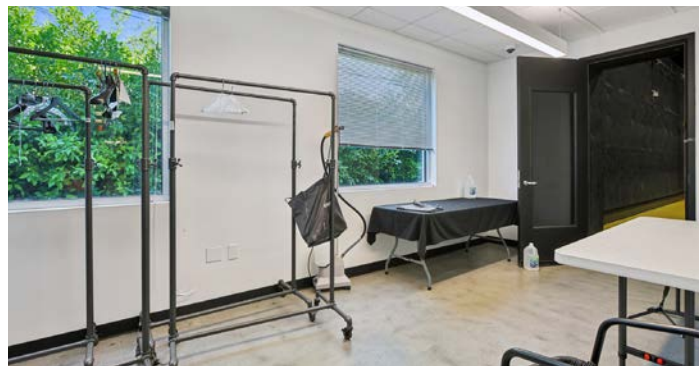
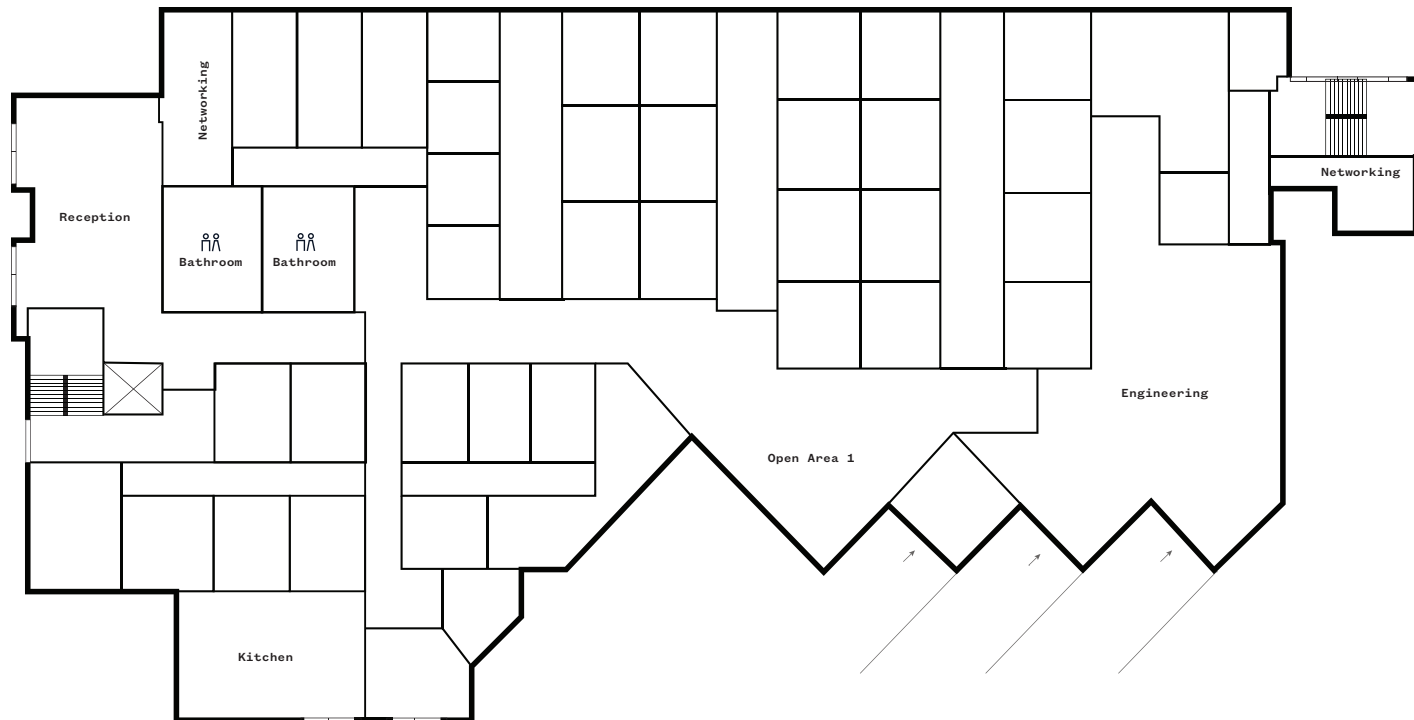


*HOLLYWOOD*  
MEDIA CAMPUS



# 1017 N LAS PALMAS

**1ST LEVEL | 17,094 RSF | AVAILABLE NOW**



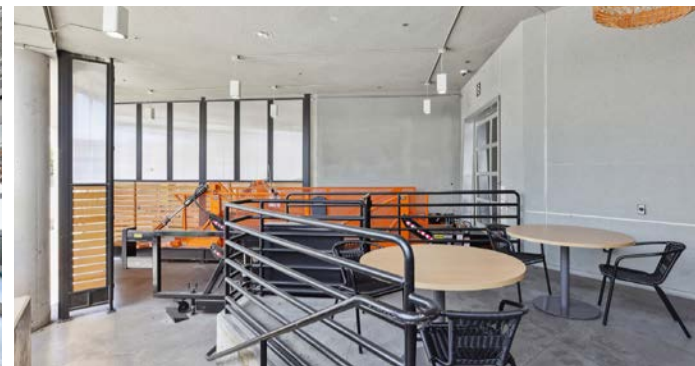
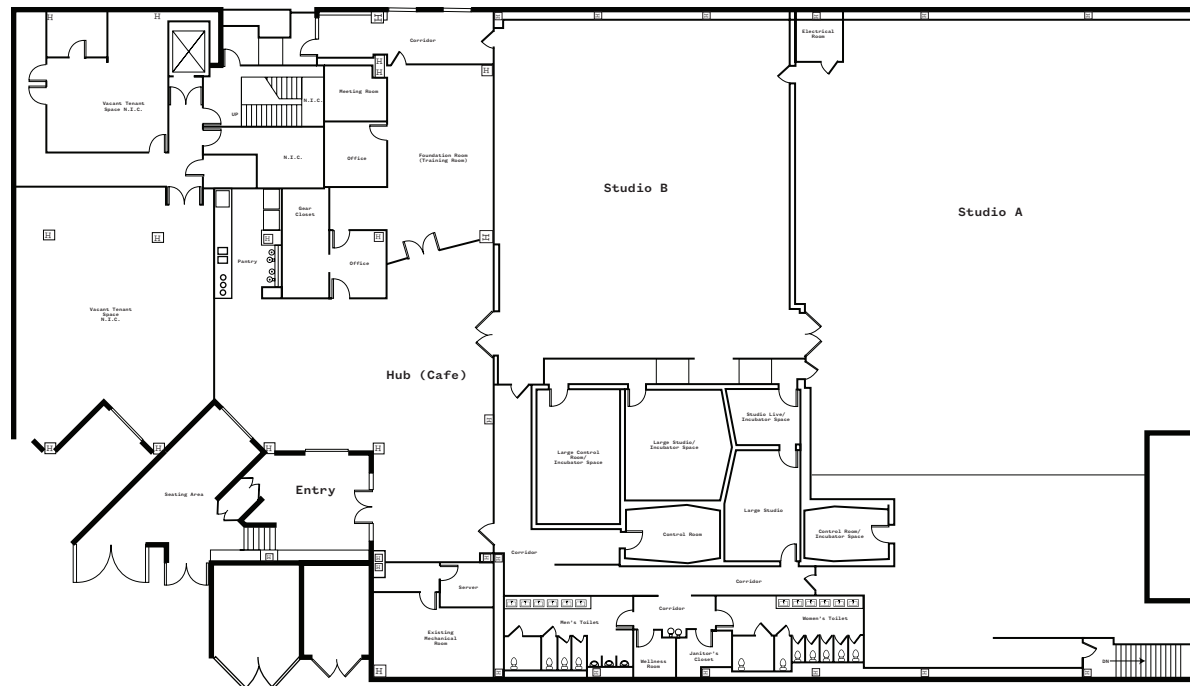


**HOLLYWOOD  
MEDIA CAMPUS**



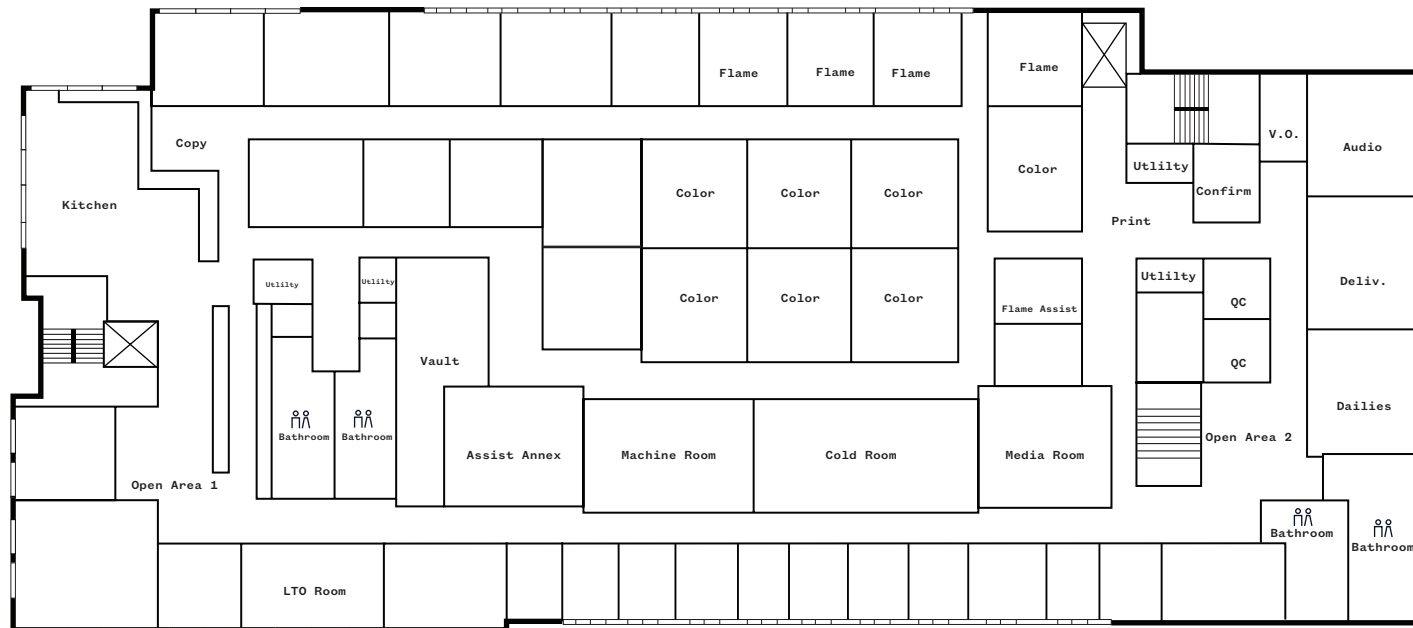
# 1017 N LAS PALMAS (SOUNDSTAGES)

**1ST LEVEL | 21,063 RSF | AVAILABLE JAN 1, 2027**



# 1017 N LAS PALMAS

**2ND LEVEL | 25,126 RSF | AVAILABLE NOW**



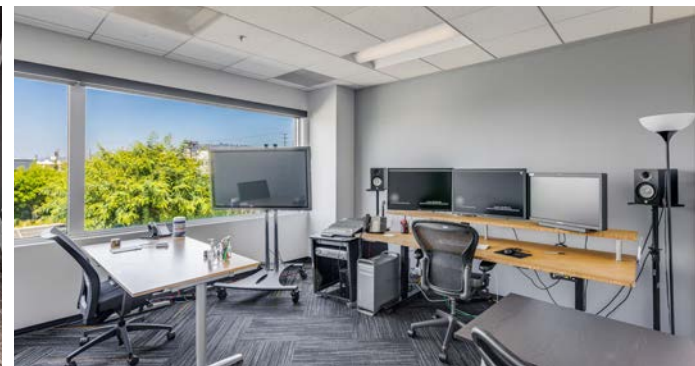
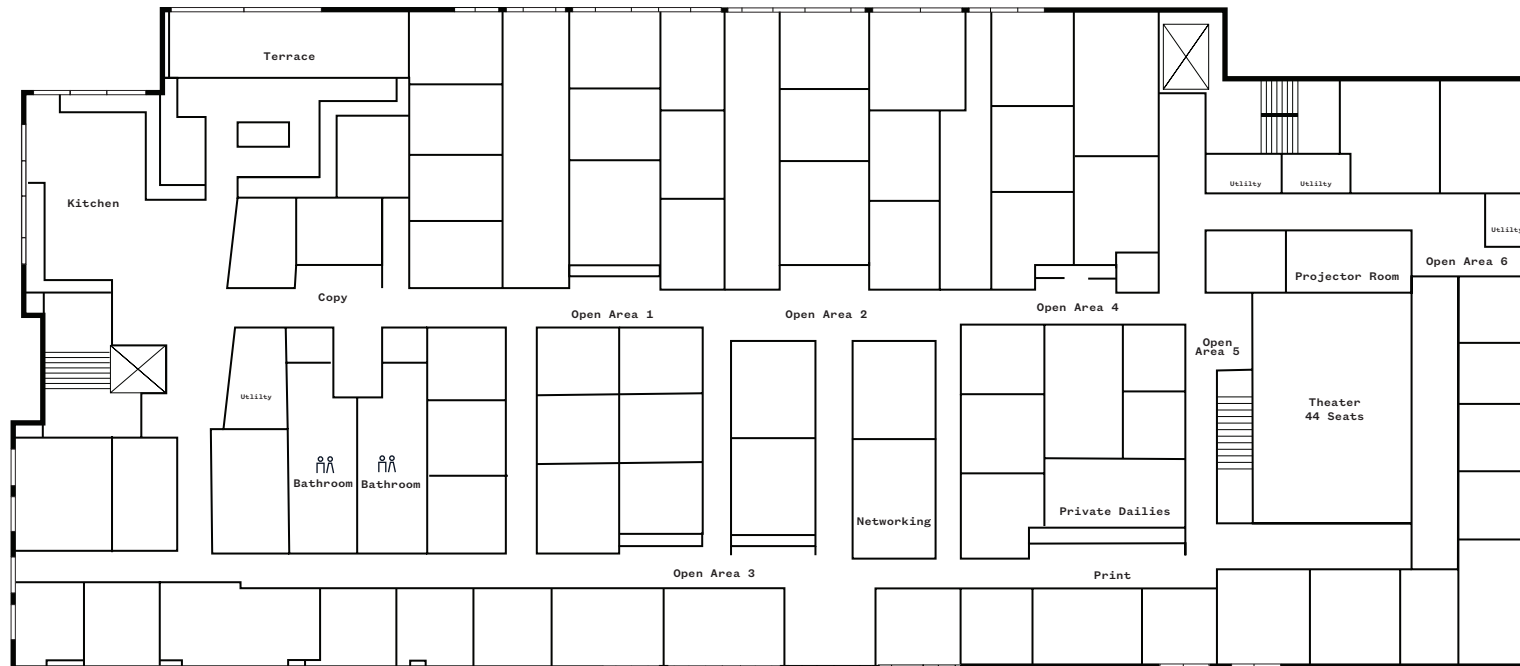


*HOLLYWOOD*  
MEDIA CAMPUS



# 1017 N LAS PALMAS

**3RD LEVEL | 25,131 RSF | AVAILABLE NOW**

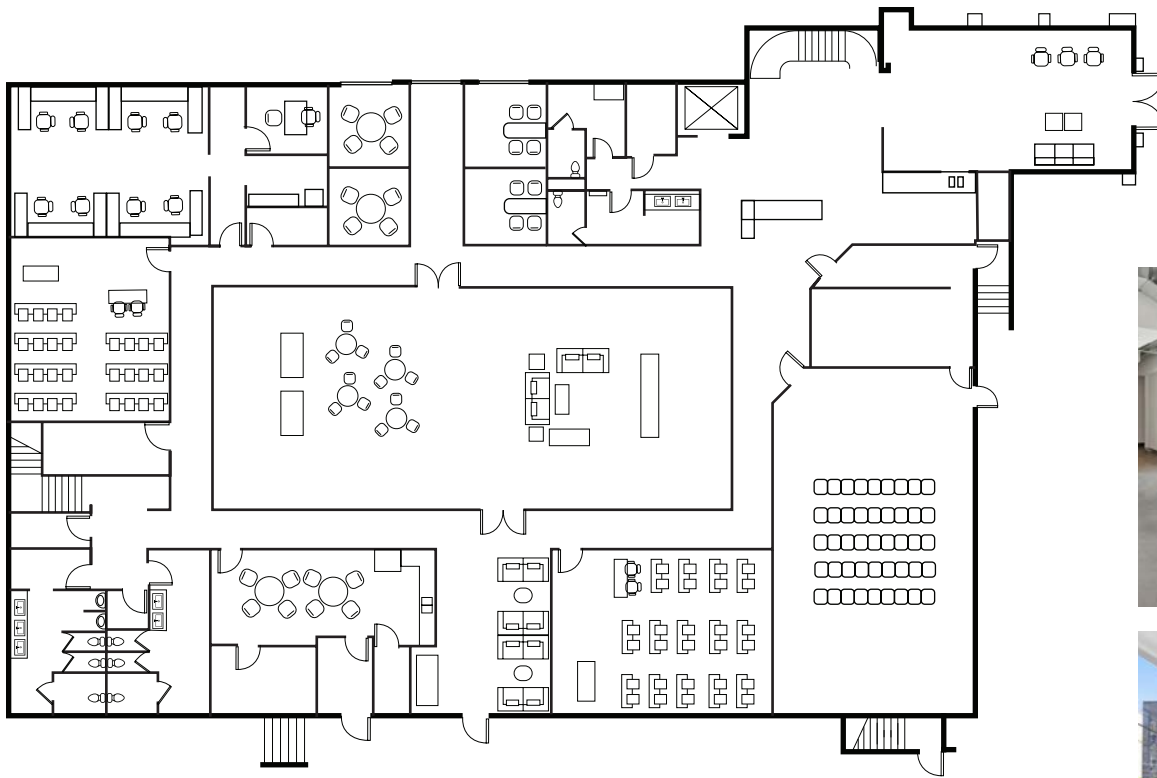


*HOLLYWOOD*  
MEDIA CAMPUS



# 6700 SANTA MONICA BLVD

**1ST LEVEL | 10,550 RSF | AVAILABLE JAN 1, 2027**



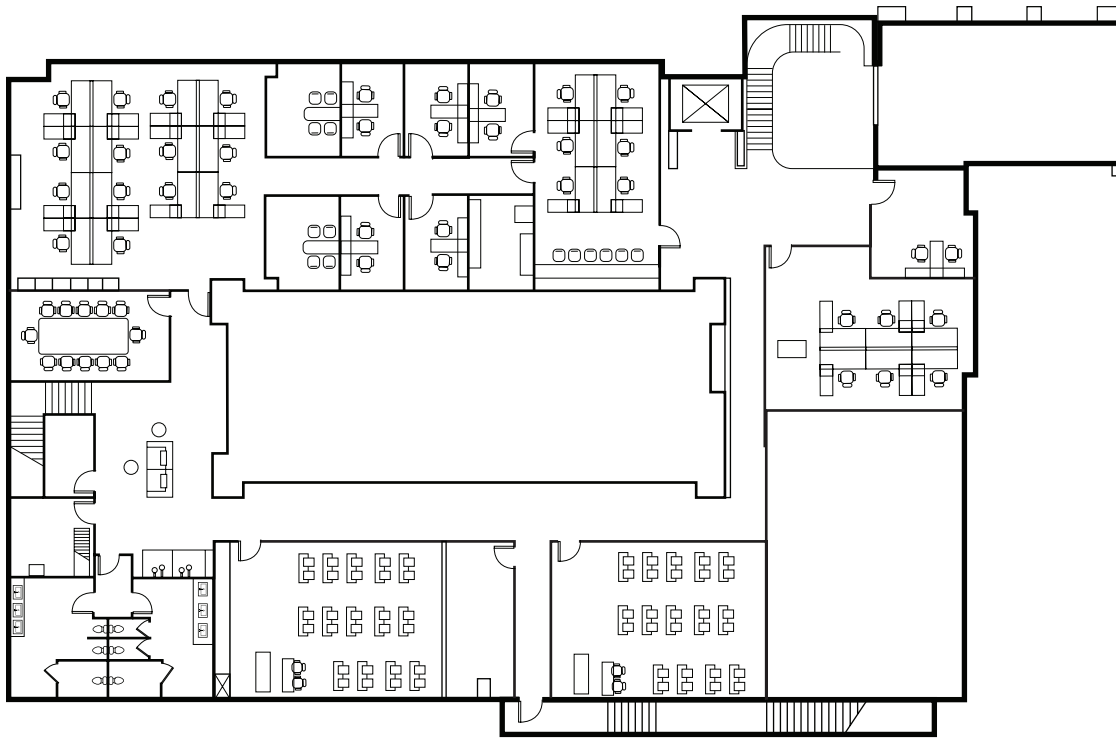


*HOLLYWOOD*  
MEDIA CAMPUS

◀ N

# 6700 SANTA MONICA BLVD

**2ND LEVEL | 9,128 RSF | AVAILABLE JAN 1, 2027**







**HOLLYWOOD  
MEDIA CAMPUS** 

6700 SANTA MONICA BLVD +  
1017 N LAS PALMAS AVE.,  
LOS ANGELES, CA 90038

# GET IN TOUCH

**NICOLE MIHALKA**  
Senior Vice President  
323 788 3969  
[nicole.mihalka@cbre.com](mailto:nicole.mihalka@cbre.com)  
RE license #01322414

**HAYLEY BLOCKLEY**  
Managing Director  
213 239 6054  
[hayley.blockley@jll.com](mailto:hayley.blockley@jll.com)  
RE license #01781682

**PETER HAJIMIHALIS**  
Senior Managing Director  
213 239 6399  
[peter.hajimihalis@jll.com](mailto:peter.hajimihalis@jll.com)  
RE license # 01994663

Although information has been obtained from sources deemed reliable, JLL does not make any guarantees, warranties or representations, express or implied, as to the completeness or accuracy as to the information contained herein. Any projections, opinions, assumptions or estimates used are for example only. There may be differences between projected and actual results, and those differences may be material. JLL does not accept any liability for any loss or damage suffered by any party resulting from reliance on this information. If the recipient of this information has signed a confidentiality agreement with JLL regarding this matter, this information is subject to the terms of that agreement. ©2025 Jones Lang LaSalle Brokerage, Inc. All rights reserved.