

2100

SUGARHOUSE



FOR LEASE **1,883 - 13,666 sf**

2121 McClelland Street, Salt Lake City, Utah 84106



2100 SUGARHOUSE OFFERS A UNIQUE BLEND OF HISTORIC CHARM
AND URBAN VIBRANCY, MAKING IT THE IDEAL PLACE TO
work, live, and play



Discover a creative, tech-inspired office space in the hip Sugarhouse neighborhood. Located in the historic Granite Furniture building, this dynamic workspace features exposed brick and open ceilings, combining the charm of the past with modern finishes.

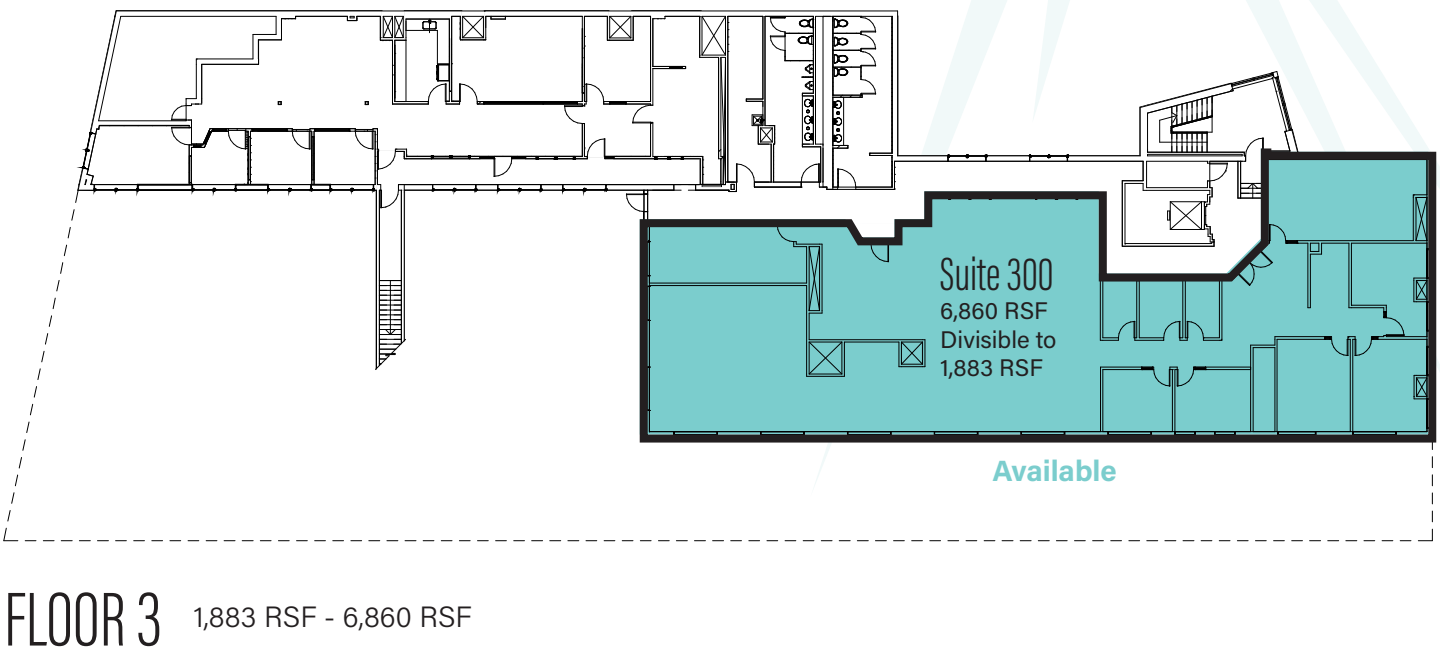
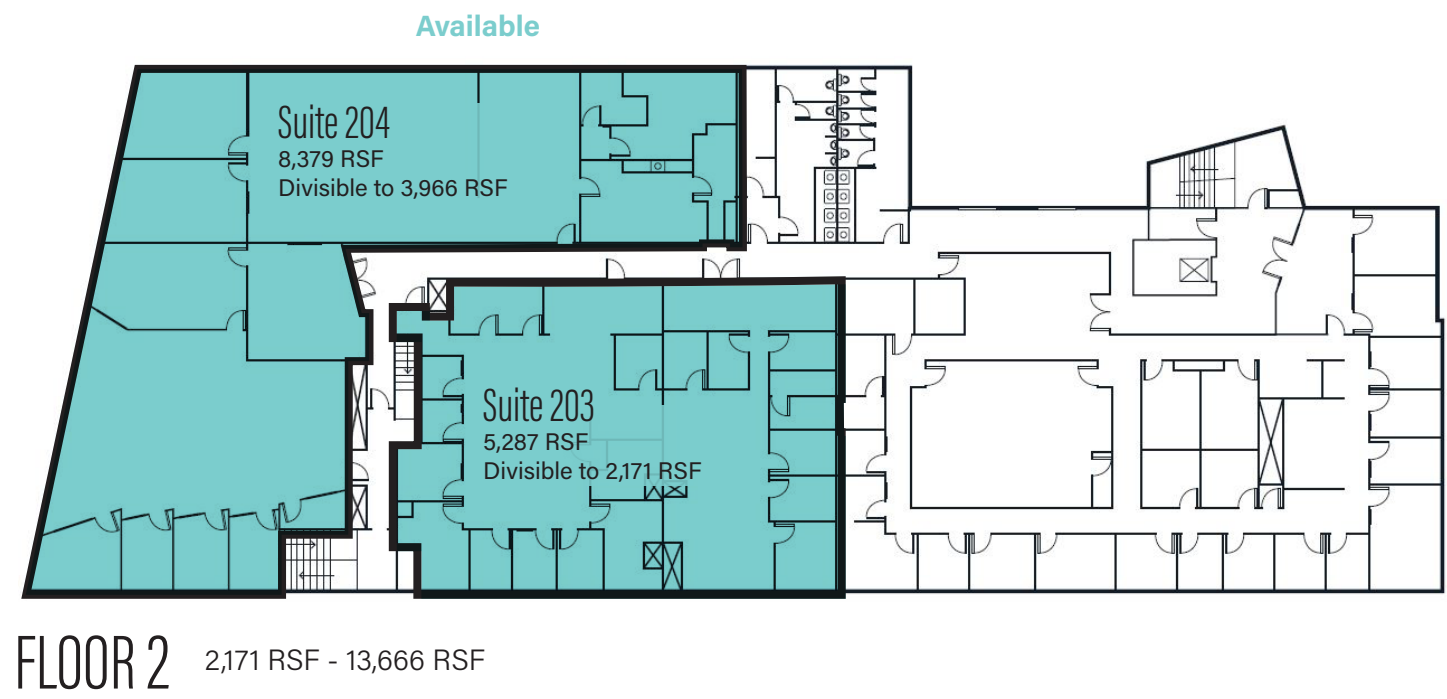
- **Rate: \$30 - \$33/SF full service**
- **Ownership on-site**
- **Trendy restaurants, bars and shopping within walking distance**
- **Easy access to I-80, I-15 and public transportation**
- **Close proximity to SLC International Airport and Downtown SLC**
- **Exposed brick and high ceilings**
- **Furniture available**

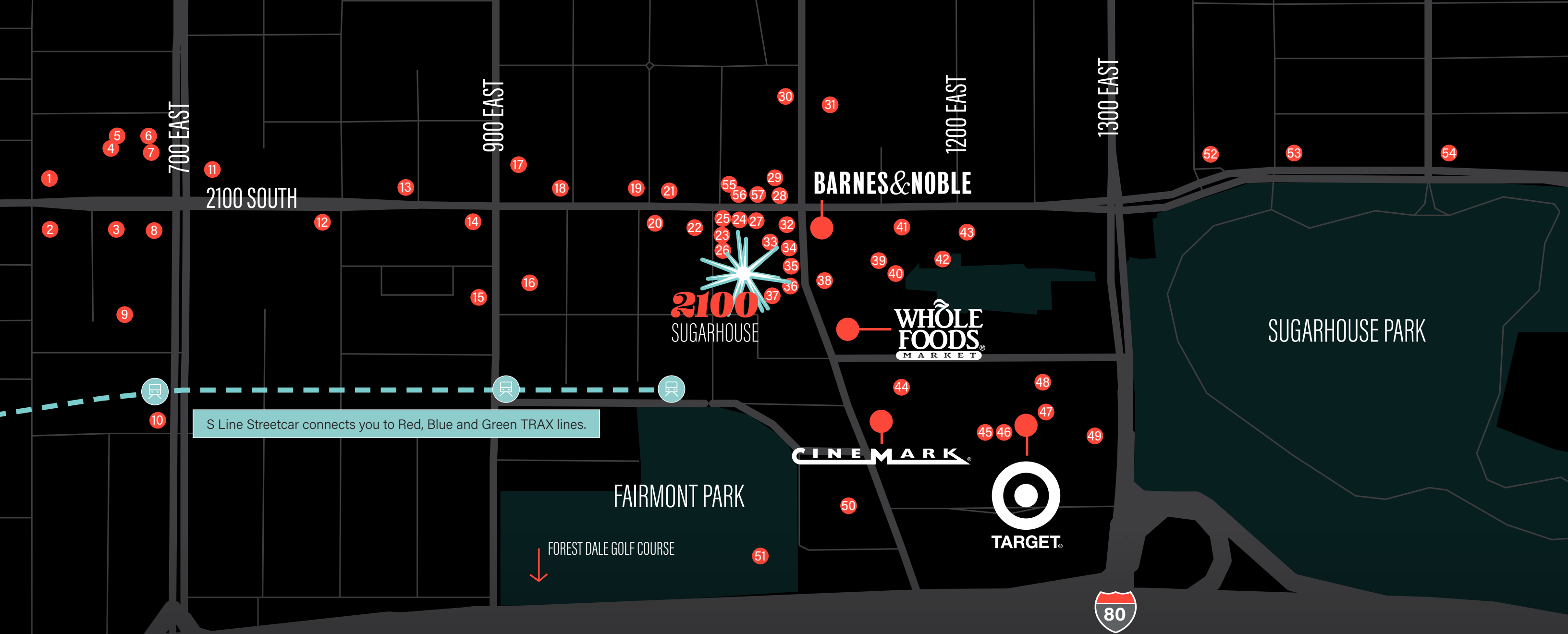


DISCOVER

creative, tech-inspired

OFFICE SPACE ROOTED IN HISTORY





welcome

TO SALT LAKE CITY'S MOST SOUGHT-AFTER NEIGHBORHOOD

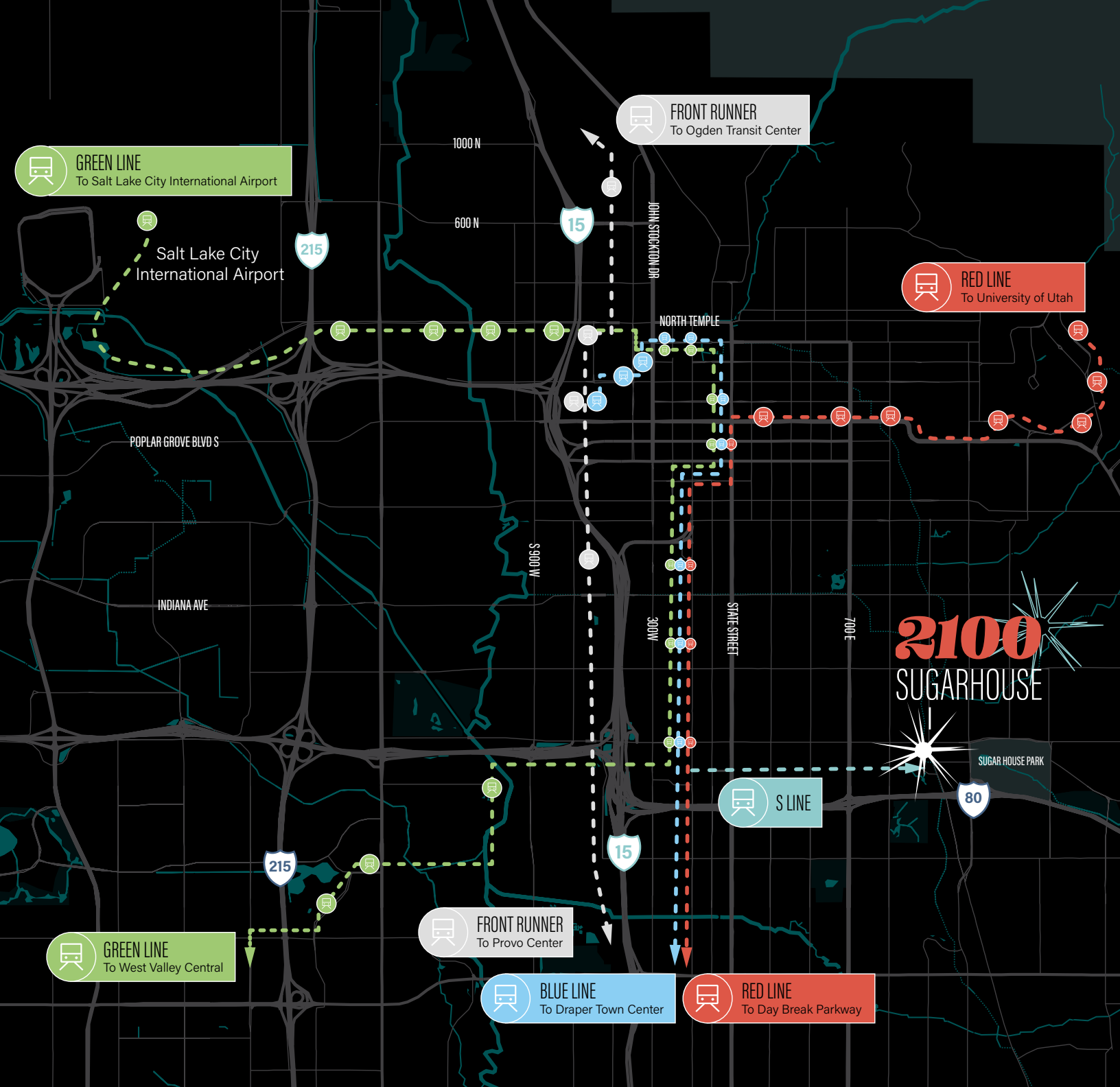
Step into the vibrant local scene, where numerous parks, trendy restaurants, bars, breweries and retail await. In Sugarhouse, the essence of the SLC lifestyle effortlessly comes alive.

- 1 Sara Thai Kitchen Sugarhouse
- 2 Rawbean Coffee
- 3 Little Caesars Pizza
- 4 Crumbl Cookies
- 5 JINYA Ramen Bars
- 6 Hanaya Poke
- 7 Jimmy John's
- 8 Dee's Family Restaurant
- 9 Future Trader Joes
- 10 Rebel House
- 11 Beans & Brews Coffeehouse
- 12 The Original Pancake House
- 13 Campfire Lounge
- 14 The SugarHouse Barbeque Company

- 15 El Cholo Mexican Restaurant
- 16 Smith's
- 17 Walgreens
- 18 McDonald's
- 19 Millies Burgers
- 20 MOD Pizza
- 21 Chipotle
- 22 Smashburger
- 23 Hopkins Brewing Company
- 24 Mint Tapas and Sushi 4
- 25 Senior Pollo
- 26 Kuchu Shabu
- 27 Liv Wellness
- 28 Salt Lake Pizza & Pasta
- 29 The Locker Room

- 30 Sugar House Pub
- 31 Sugar House Coffee
- 32 Wasatch Brew Pub
- 33 Ozora Izakaya Japanese Bar & Tapas
- 34 Ramen Legend
- 35 Aubergine Kitchen SUGAR HOUSE
- 36 Buffalo Wild Wings
- 37 Mochinut
- 38 Kimi's Chop & Oyster House
- 39 Panda Express
- 40 Athleta
- 41 Noodles and Company
- 42 Old Navy

- 43 Chick-Fil-A
- 44 Orangetheory Fitness
- 45 Michaels
- 46 Sugarhouse Shopping Center
- 47 Big 5 Sporting Goods
- 48 Nordstrom Rack
- 49 Starbucks
- 50 Patagonia Outlet
- 51 Fairmont dog park
- 52 The Dodo Restaurant
- 53 Ekamai Thai
- 54 F45 Training
- 55 Quarters Arcade Bar
- 56 Craft by Proper
- 57 The Bar Method



JAMI MARSH

+1 801 456 9514
jami.marsh@jll.com

AMANDA LAWSON

+1 385 419 3191
amanda.lawson@jll.com



Although information has been obtained from sources deemed reliable, neither Owner nor JLL makes any guarantees, warranties or representations, express or implied, as to the completeness or accuracy as to the information contained herein. Any projections, opinions, assumptions or estimates used are for example only. There may be differences between projected and actual results, and those differences may be material. The Property may be withdrawn without notice. Neither Owner nor JLL accepts any liability for any loss or damage suffered by any party resulting from reliance on this information. If the recipient of this information has signed a confidentiality agreement regarding this matter, this information is subject to the terms of that agreement. ©2025 Jones Lang LaSalle IP, Inc. All rights reserved.