

GROUND FLOOR RETAIL SPACE IN PARC VIEW AT COMMONWEALTH



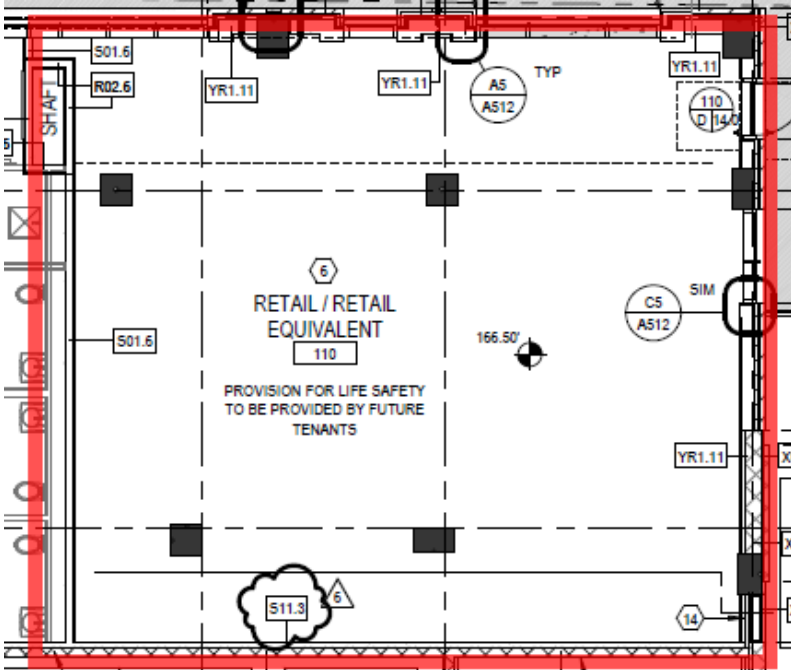
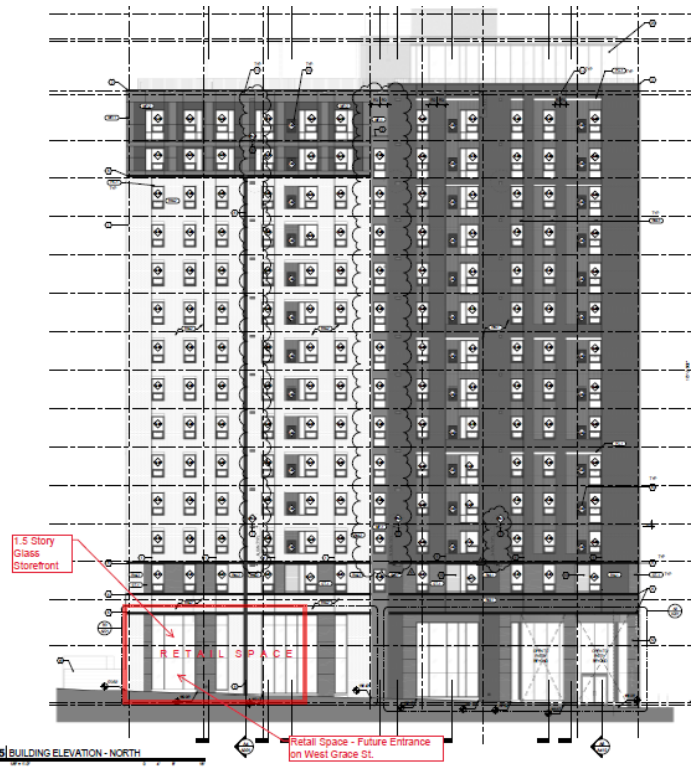
FOR LEASE

321 W Grace Street
Richmond, VA 23220



1,600 SF available

BUILDING AND FLOOR PLAN



PROPERTY OVERVIEW

- > 1,600 SF ground floor retail space with patio seating at Parc View, an off campus VCU student housing project delivering 2024
- > Located adjacent to Monroe Ward Park, nestled in between VCU and downtown, surrounded by restaurants, hotels, food trucks, and retail shopping
- > Parc View will have over 500 beds in 183 units, along with a rooftop deck and firepits, zen wellness terrace, collaborative art studio, fitness center, and private dog run

AREA DEMOGRAPHICS

1 MILE

Population Summary

2022 Daytime Population 73,890

Median Age

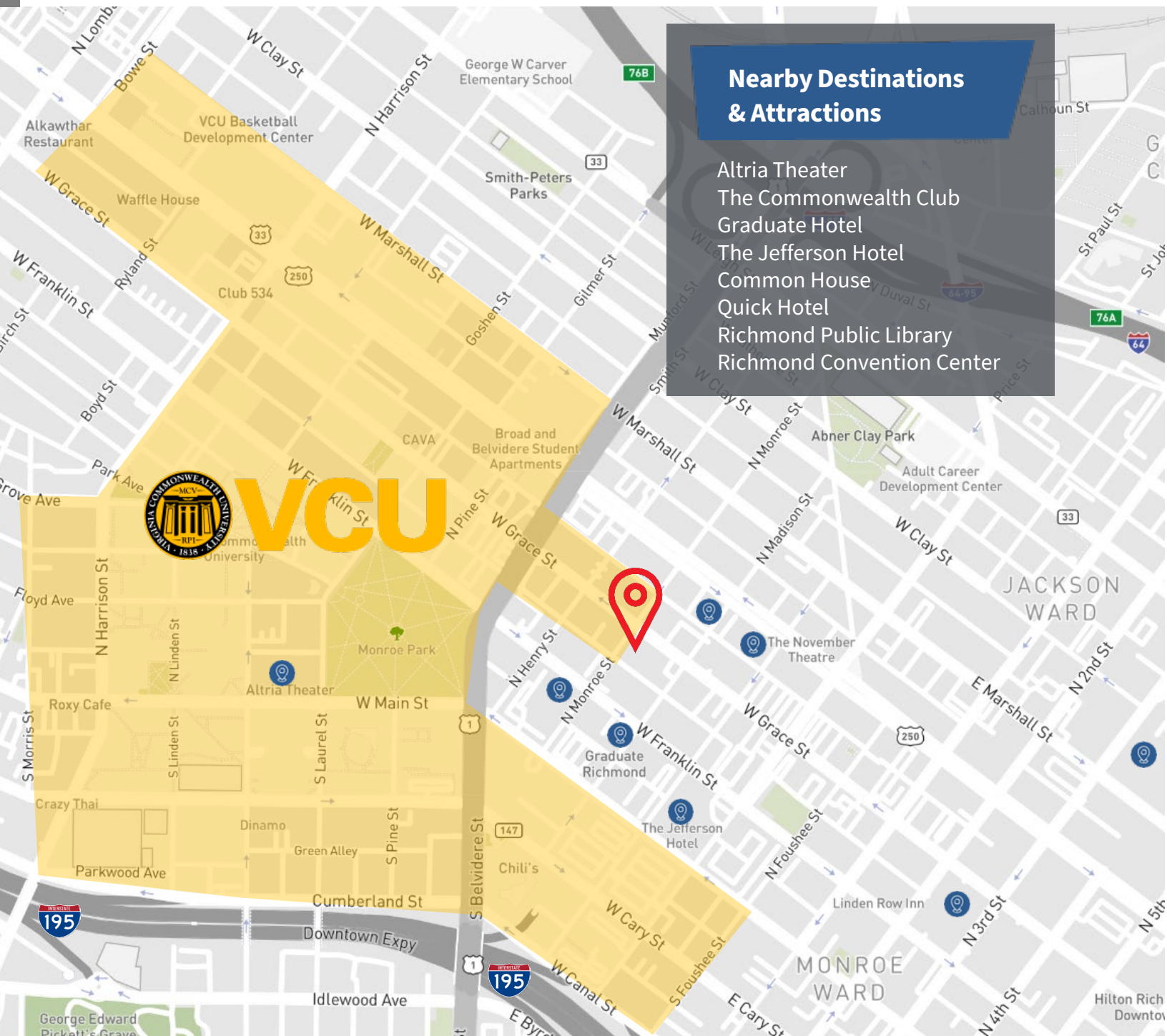
2022 Median Age 23

Average Household Income

2022 Average Household Income \$70,611



LOCATION OVERVIEW



Sophia McCulloch

Associate

+1 804 200 6433

Sophia.mcculloch@jll.com

Gareth Jones

Managing Director

+1 804 200 6453

gareth.jones@jll.com



Although information has been obtained from sources deemed reliable, JLL does not make any guarantees, warranties or representations, express or implied, as to the completeness or accuracy as to the information contained herein. Any projections, opinions, assumptions or estimates used are for example only. There may be differences between projected and actual results, and those differences may be material. JLL does not accept any liability for any loss or damage suffered by any party resulting from reliance on this information. If the recipient of this information has signed a confidentiality agreement with JLL regarding this matter, this information is subject to the terms of that agreement. ©2023. Jones Lang LaSalle IP, Inc. All rights reserved.