

For lease

1 Batesville Boulevard
Batesville, IN 47006

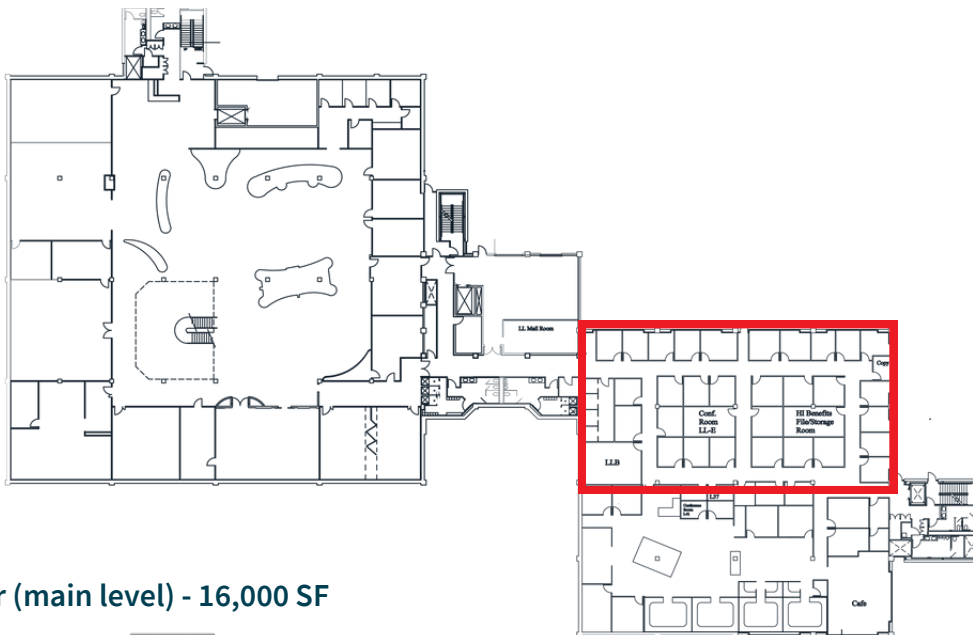


First and second floor available for lease

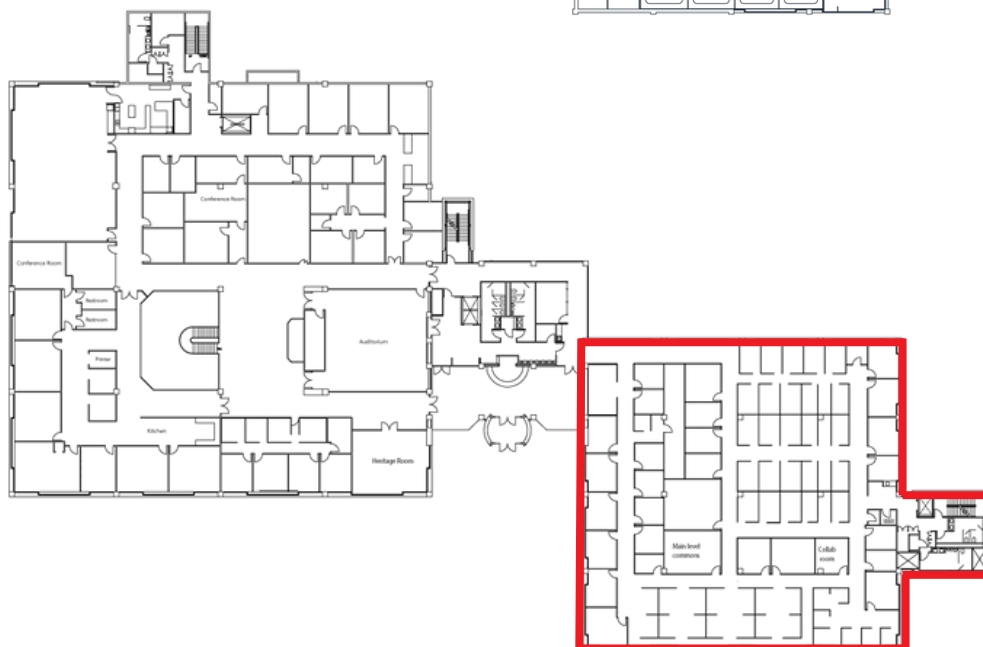
Property Highlights

- 8,000-24,000 SF available
- Headquarters opportunity
- Building sits on ~26 acres
- Large parking lot with over 200 parking spaces
- Key fob access for security
- Convenient access to major roadways in Southeastern Indiana

1st Floor (lower level) - 8,000 SF



2nd Floor (main level) - 16,000 SF





Batesville

1 Batesville

Batesville quick facts



25 minutes to Ohio border
and just over an hour to
Indianapolis



Median household
income \$66,806
census.gov



95% of residents have
a high school degree
or higher
census.gov



About JLL

For over 200 years, JLL (NYSE: JLL), a leading global commercial real estate and investment management company, has helped clients buy, build, occupy, manage and invest in a variety of commercial, industrial, hotel, residential and retail properties. A Fortune 500® company with annual revenue of \$20.9 billion and operations in over 80 countries around the world, our more than 103,000 employees bring the power of a global platform combined with local expertise. Driven by our purpose to shape the future of real estate for a better world, we help our clients, people and communities SEE A BRIGHTER WAYSM. JLL is the brand name, and a registered trademark, of Jones Lang LaSalle Incorporated. For further information, visit jll.com.

JLL

Kevin Gillihan

Senior Vice President

Kevin.Gillihan@jll.com

+1 317 810 7355

Although information has been obtained from sources deemed reliable, neither Owner nor JLL makes any guarantees, warranties or representations, express or implied, as to the completeness or accuracy as to the information contained herein. Any projections, opinions, assumptions or estimates used are for example only. There may be differences between projected and actual results, and those differences may be material. The Property may be withdrawn without notice. Neither Owner nor JLL accepts any liability for any loss or damage suffered by any party resulting from reliance on this information. If the recipient of this information has signed a confidentiality agreement regarding this matter, this information is subject to the terms of that agreement. ©2025. Jones Lang LaSalle IP, Inc. All rights reserved.