

For Lease

Powerline Park

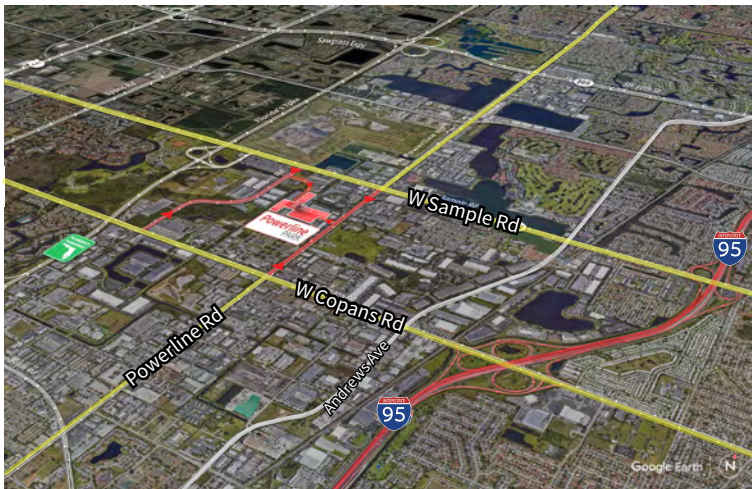
3014 NW 25th Avenue
Pompano Beach, FL 33069



Industrial Space For Lease
3,180 SF

Powerline Park

3014 NW 25th Avenue, Pompano Beach, FL 33069



Location

- Easy access off Sample Road and Powerline Road
- Excellent access to I-95 and the Florida Turnpike
- Equidistant to Fort Lauderdale/Hollywood International Airport and Palm Beach International Airport

Space Features

- 3,180 SF total
- 840 SF of office
- 2,340 SF of warehouse
- 16' clear height
- One (1) grade level door
- Parking ratio: 2.0/1,000 sf

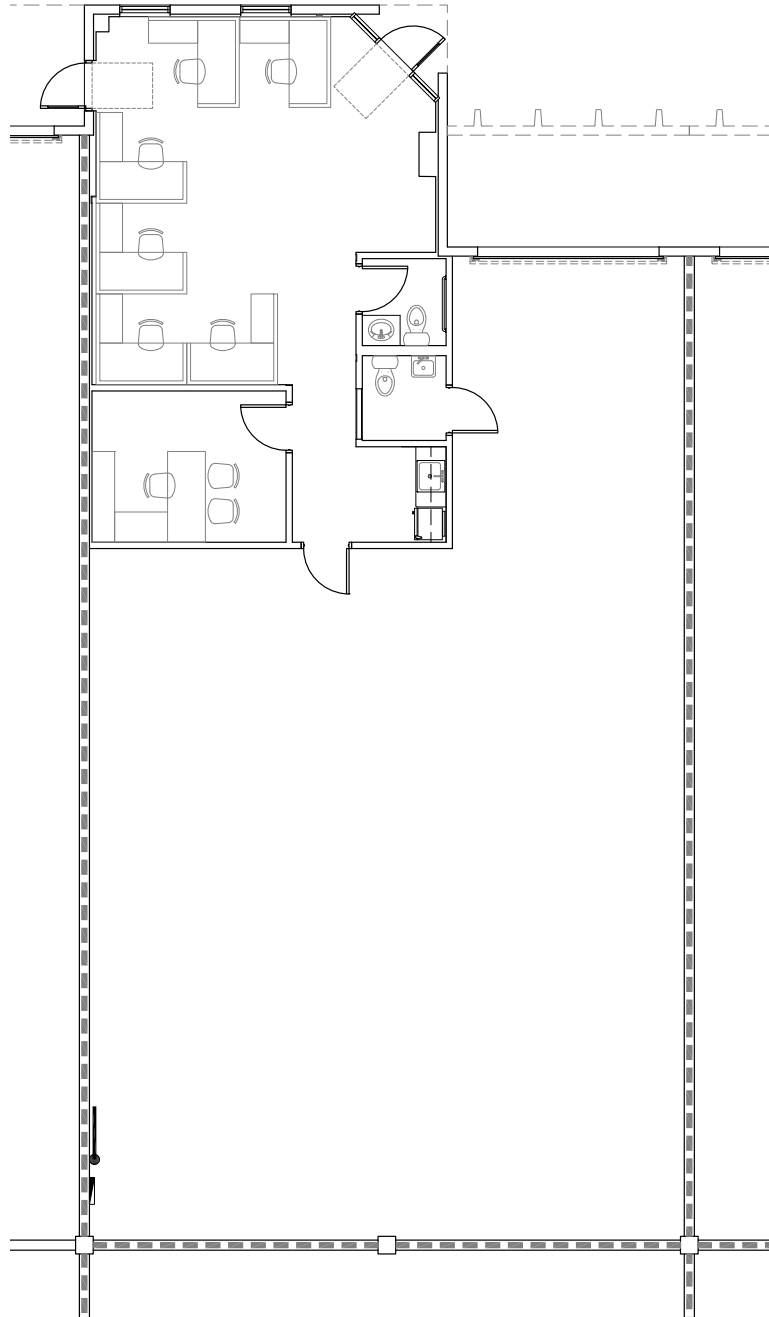
For Lease

Powerline Park

3042 NW 25th Avenue, Pompano Beach, FL 33069

Powerline Park Floor Plan

Total: 3,180 SF
Office: 840 SF
Warehouse: 2,340 SF



3042 NW 25th Avenue, Pompano Beach, FL 33069

Total:	3,180 SF
Office:	840 SF
Warehouse:	2,340 SF



For Lease

Powerline Park

3042 NW 25th Avenue, Pompano Beach, FL 33069

Powerline Park Site Plan

 - Subject Property



Building	Suite	Total (SF)	Office (SF)	Warehouse (SF)	Loading	Clear Height	Available Date
7	18	3,180	840	2,340	1 G	16'	Now

