

# For Lease

## Powerline Park

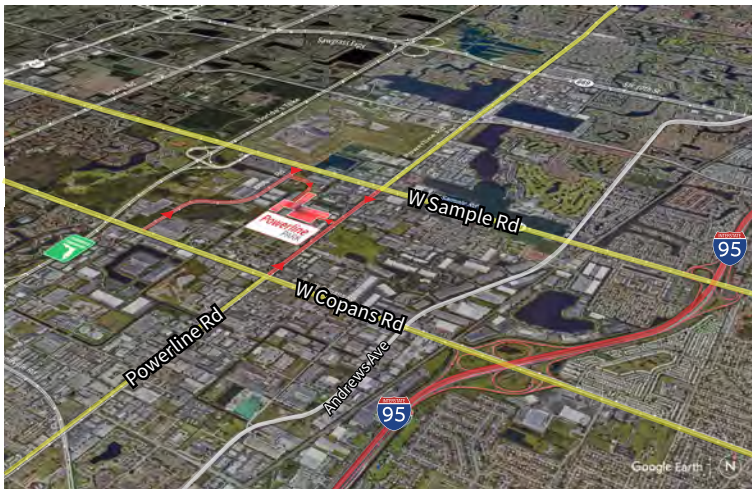
3036 NW 25th Avenue  
Pompano Beach, FL 33069



Industrial Space For Lease  
**2,988 SF**

### Powerline Park

3036 NW 25th Avenue, Pompano Beach, FL 33069



#### Location

- Easy access off Sample Road and Powerline Road
- Excellent access to I-95 and the Florida Turnpike
- Equidistant to Fort Lauderdale/Hollywood International Airport and Palm Beach International Airport

#### Space Features

- 2,988 SF total
- 455 SF of office
- 2,533 SF of warehouse
- 16' clear height
- One (1) grade level door
- Parking ratio: 2.0/1,000 sf
- Available Now

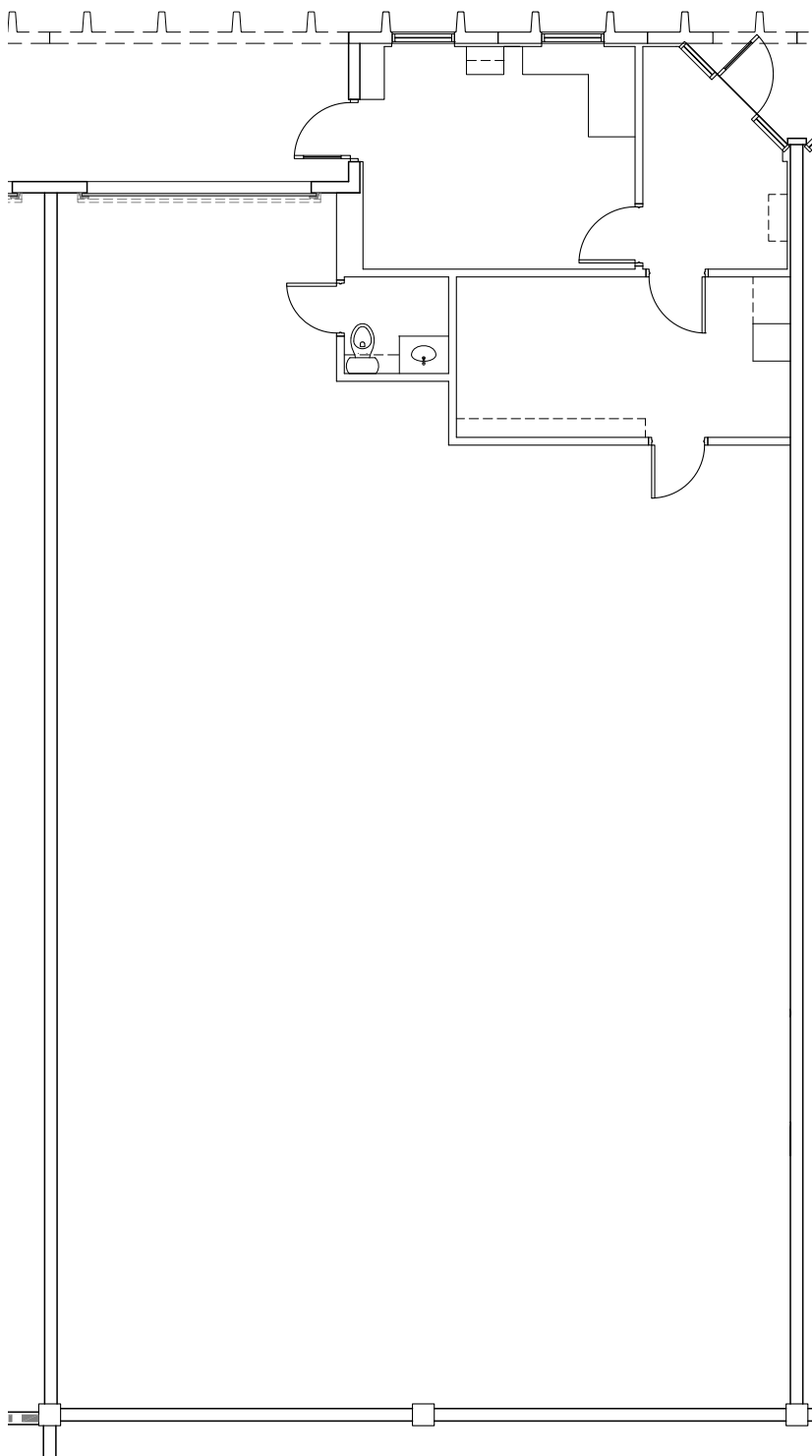
# For Lease

## Powerline Park

3036 NW 25<sup>th</sup> Avenue, Pompano Beach, FL 33069

### Powerline Park Floor Plan

Total: 2,988 SF  
Office: 455 SF  
Warehouse: 2,533 SF



© 2024 Jones Lang LaSalle IP, Inc.



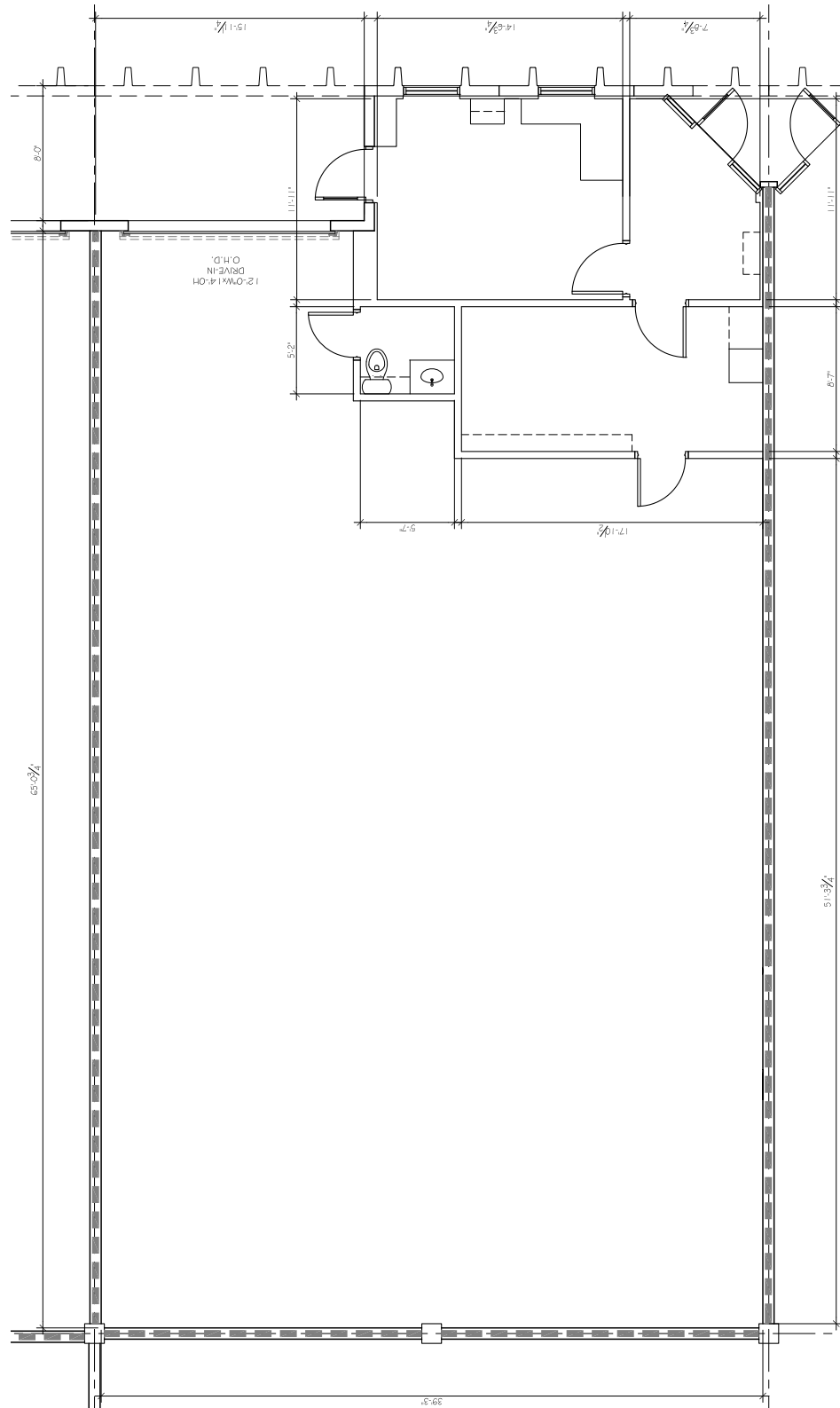
# For Lease

## Powerline Park

3036 NW 25<sup>th</sup> Avenue, Pompano Beach, FL 33069

### Powerline Park Dimensioned Floor Plan

Total: 2,988 SF  
Office: 455 SF  
Warehouse: 2,533 SF



# For Lease

## Powerline Park

3036 NW 25<sup>th</sup> Avenue, Pompano Beach, FL 33069

### Powerline Park Site Plan

 - Subject Property



Building	Suite	Total (SF)	Office (SF)	Warehouse (SF)	Loading	Clear Height	Available Date
7	5	2,988	455	2,533	1 G	16'	Now

