

AIR-CONDITIONED WAREHOUSE *For Lease*

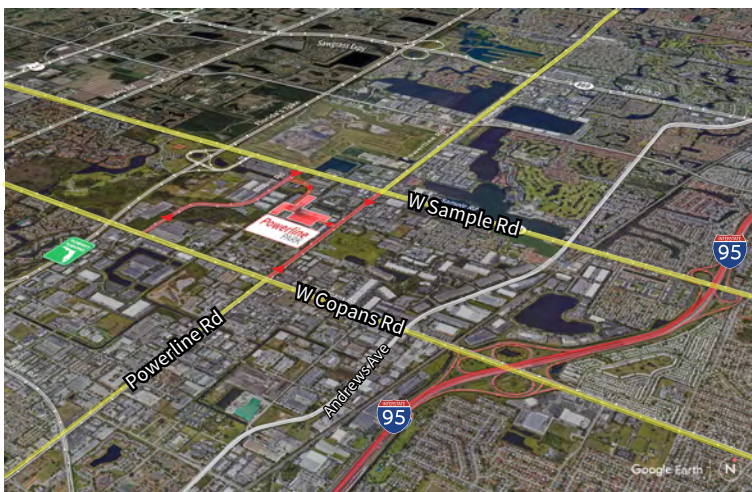
Powerline Park
3000 NW 25th Avenue
Pompano Beach, FL 33069



Industrial Space For Lease
3,498 SF

Powerline Park

3000 NW 25th Avenue, Suite 11, Pompano Beach, FL 33069



Location

- Easy access off Sample Road and Powerline Road
- Excellent access to I-95 and the Florida Turnpike
- Equidistant to Fort Lauderdale/Hollywood International Airport and Palm Beach International Airport

Space Features

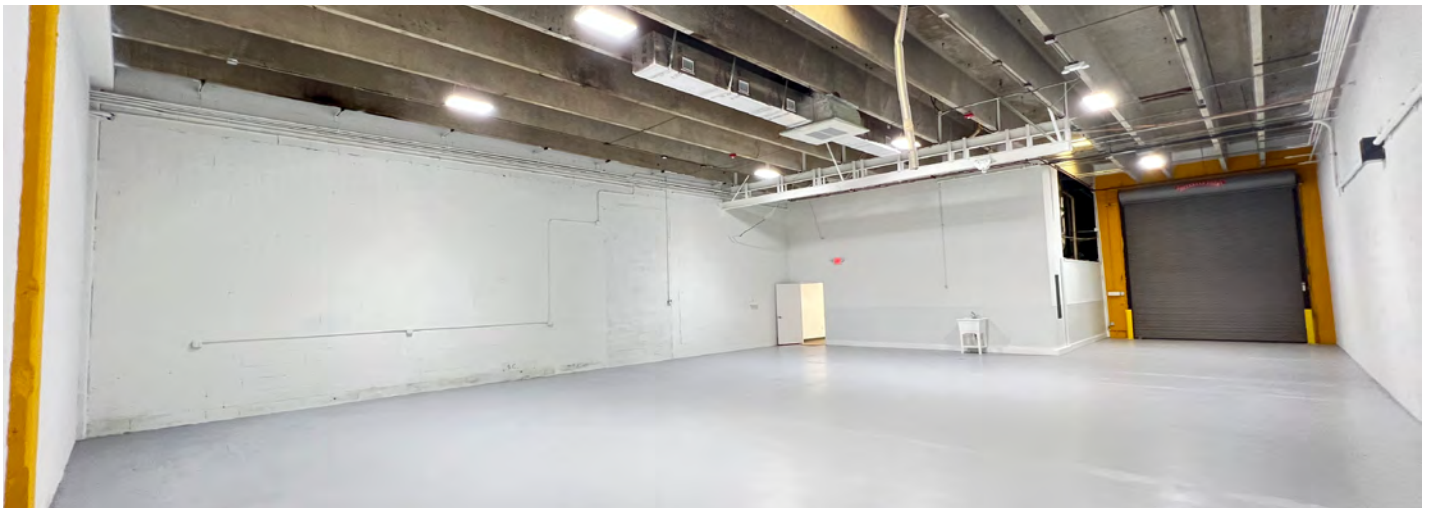
- 3,498 SF total
- 857 SF of office
- 2,641 SF of warehouse
- 20' clear height
- One (1) grade level door
- Air-conditioned warehouse
- Parking ratio: 2.0/1,000 sf

For Lease

Powerline Park

3000 NW 25th Avenue, Pompano Beach, FL 33069

Powerline Park Recently Renovated Office & Warehouse



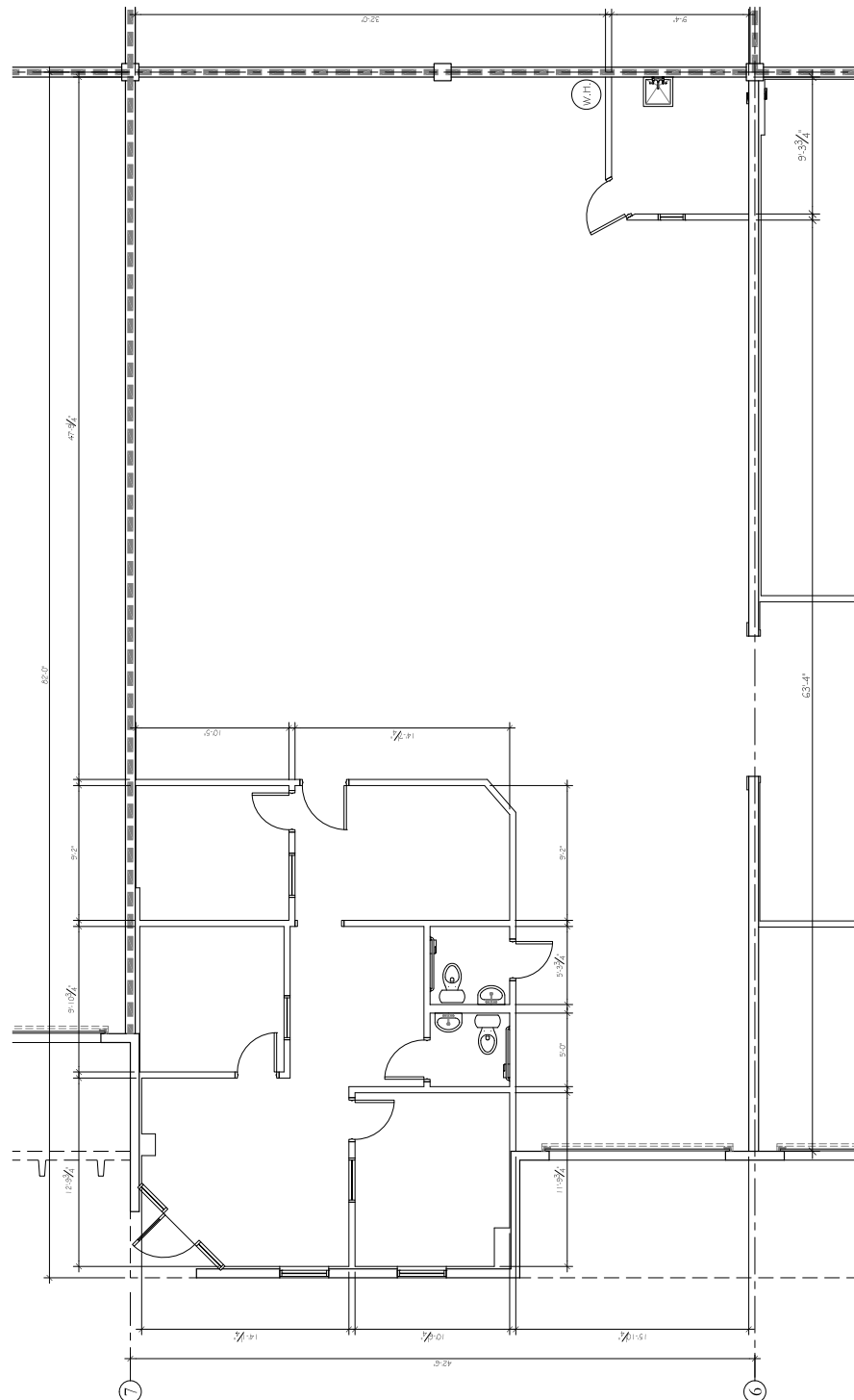
For Lease

Powerline Park

3000 NW 25th Avenue, Pompano Beach, FL 33069

Powerline Park Dimensioned Floor Plan

Total: 3,498 SF
Office: 857 SF
Warehouse: 2,641 SF



For Lease

Powerline Park

3000 NW 25th Avenue, Pompano Beach, FL 33069

Powerline Park

Site Plan

 - Subject Property



Building	Suite	Total (SF)	Office (SF)	Warehouse (SF)	Loading	Clear Height	Available Date
6	11	3,498	857	2,641	1 G	20'	Now

