

38,923 SF End cap unit

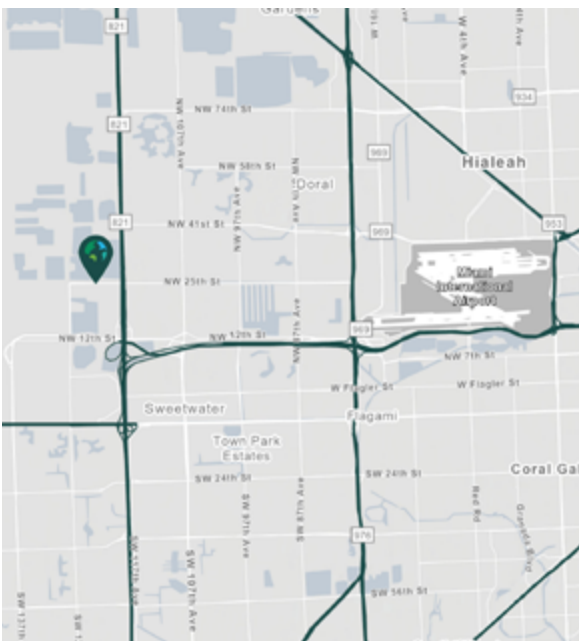
Industrial Space For Lease



Prologis Beacon Lakes 7



12250 NW 25th Street
Miami, FL 33182 USA



LOCATION

- Unparalleled connectivity with direct access to 836 (Dolphin expressway), Florida's Turnpike and 826 (Palmetto expressway)
- Easy access to Miami International Airport and Port of Miami

FACILITY

- **End cap unit**
- 38,923 total SF:
 - 36,012 warehouse SF
 - 2,911 SF office
- 28' clear height
- 1.18 /1,000 SF car parking ratio
- **Surplus ±100 trailer parking, exclusive use by Prologis' tenants within the park**
- 13 dock doors (8 pit levelers and 4 edge of dock)
- 202' building depth
- 40' x 30' column spacing typical
- ESFR sprinkler system and LED energy efficient lighting
- Available 8/1/2025

ADVANTAGES AND AMENITIES

- Excellent amenities within the park: 500,000+ SF of shopping, dining and entertainment: Top Golf, Home Depot, Dick's, Starbucks and more
- Warehouse neighbors include UPS, Amazon, XPO Logistics, NBC Universal/Telemundo, Goya and Hyundai among many others
- [Prologis Clear Lease®](#) – Know your lease expenses and capital cost with greater certainty before you sign



Scan the QR code for more info!

Your single-source service for efficient move-in and operations: [prologisessentials.com](https://www.prologisessentials.com)

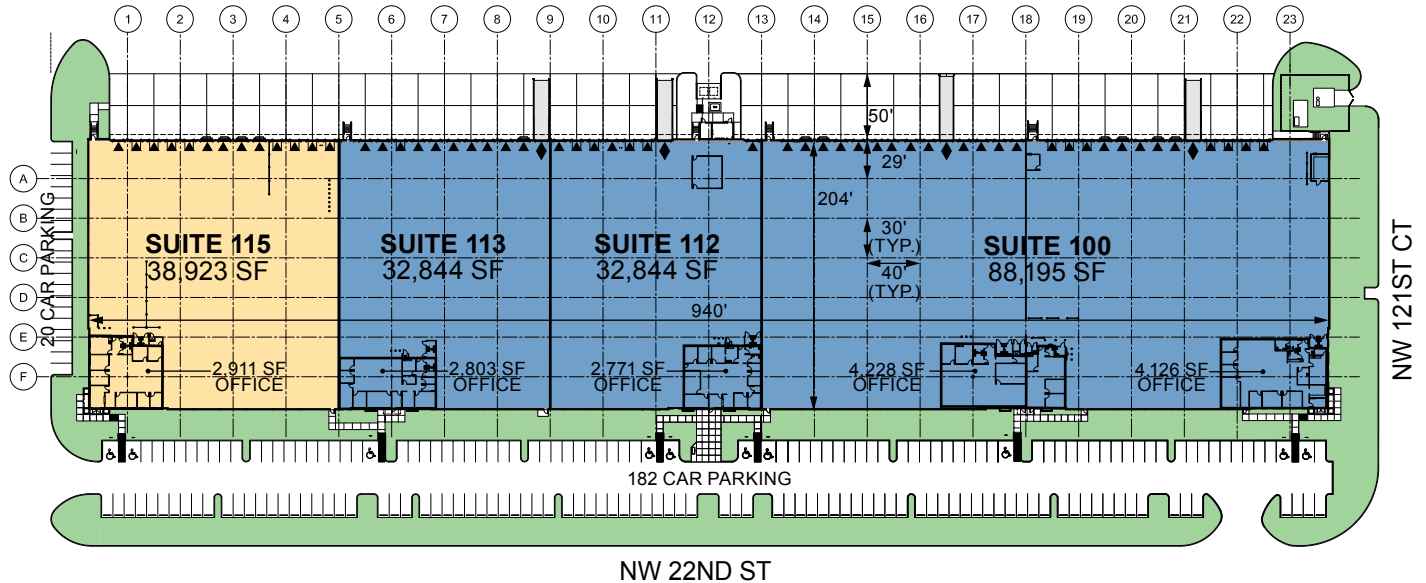
www.prologis.com

38,923 SF End cap unit

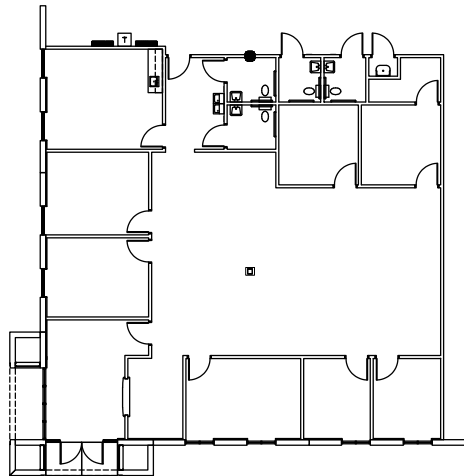
Industrial Space For Lease



Prologis Beacon Lakes 7



SUITE 115 OFFICE
2,911 SF



LEGEND

- ▼ Dock position
- ◆ Drive-in door
- Available
- Leased
- Land



Brian Smith
smith.brian@jll.com
ph +1 305 960 8403
cell +1 305 710 2291
200 S. Biscayne Blvd.
Suite 4300
Miami, FL 33131 USA

Audley Bosch
audley.bosch@jll.com
ph +1 305 960 8404
cell +1 305 742 8421
200 S. Biscayne Blvd.
Suite 4300
Miami, FL 33131 USA

Ana Rivera
ana.rivera@jll.com
ph +1 305 960 8427
cell +1 305 778 7652
200 S. Biscayne Blvd.
Suite 4300
Miami, FL 33131 USA

Prologis
Barbara Mantecon
bmantecon@prologis.com
ph +1 954 316 1777
8355 NW 12th Street
Miami, FL 33126 USA