

For lease

4012-4016 Raintree Road
Chesapeake, VA 23321

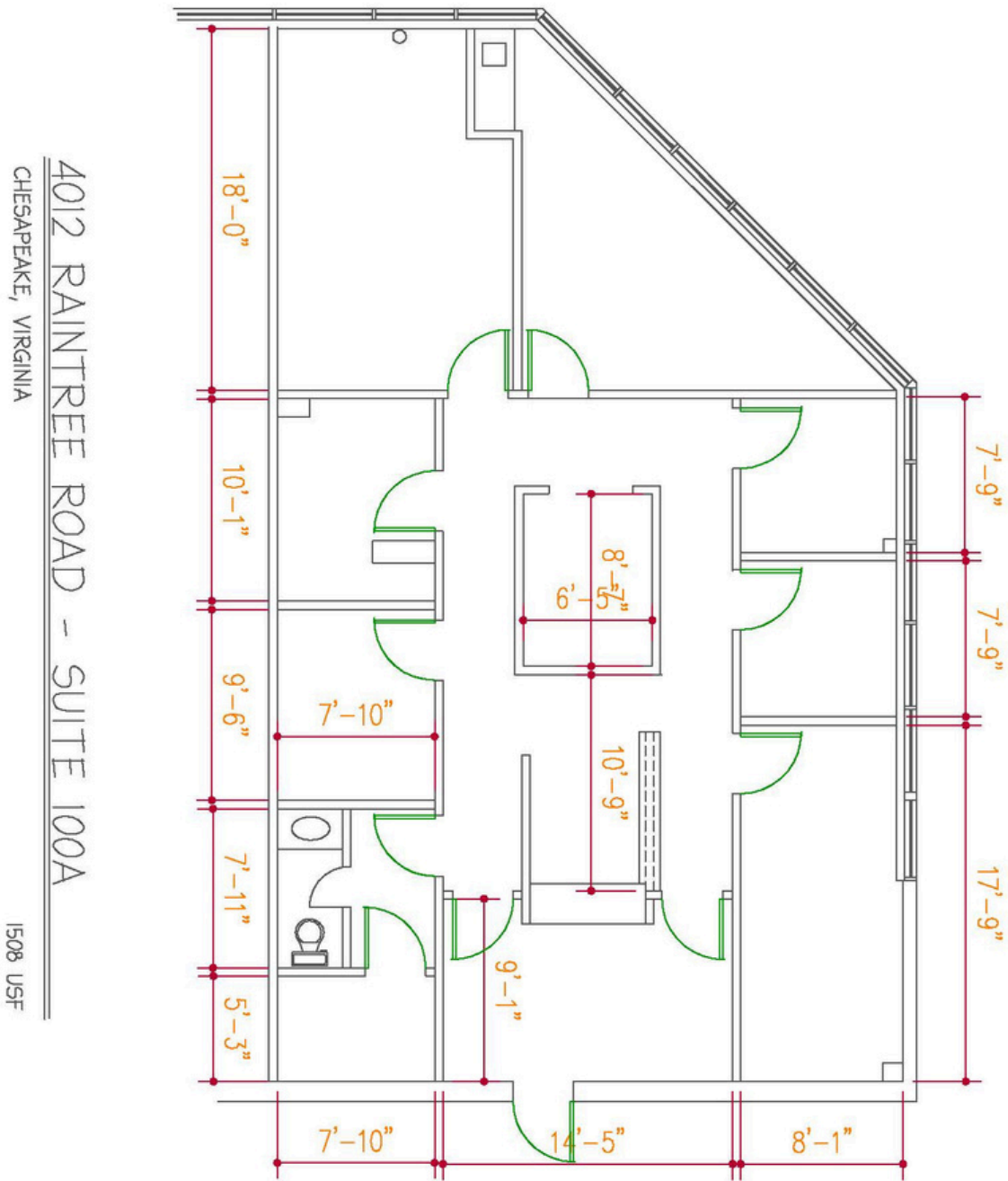
Office space in desirable two-building park

- Two buildings comprising 40,000 s.f. in great location
- 4012 Raintree Road - Suite 100A - 1,689 RSF available now
- 4016 Raintree Road - Suite 220 - 2,314 RSF available now
- Monument signage for all tenants
- Generous parking ratio of 5.0 spaces per 1,000 s.f.
- Located at the heart of affluent, fast-growing Western Branch
- Walking distance from Chesapeake Square Mall amenities
- Bon Secours medical plaza is around the corner
- Excellent local access via Taylor Road and Portsmouth Boulevard
- Five minutes from Interstate 664

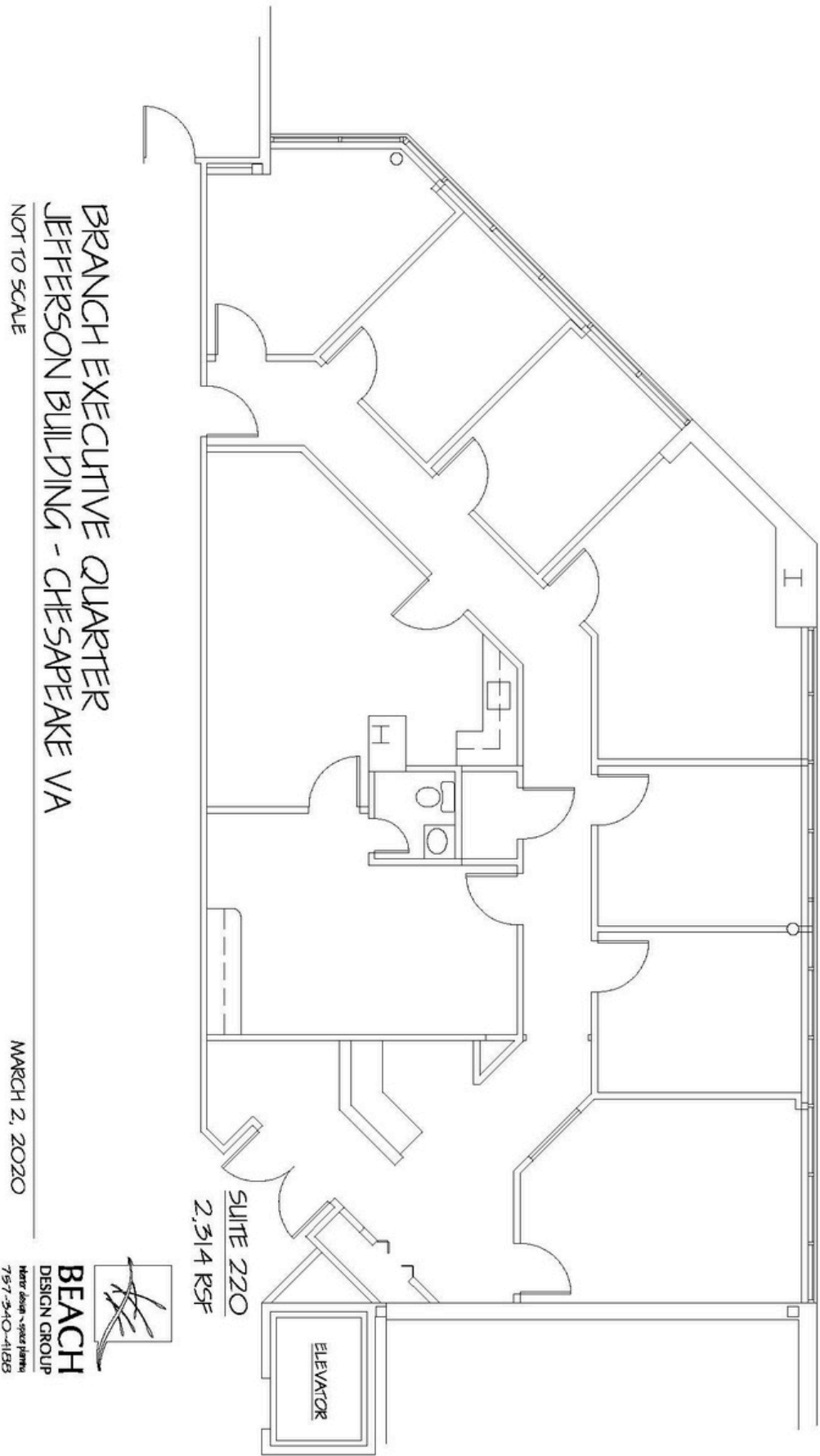
JLL Contact:

Todd Scholsohn
todd.scholsohn@jll.com
+1 757 938 1562

4012 Raintree Rd.
Suite 100A - 1,689 RSF



4016 Raintree Rd.
Suite 220 - 2,314 RSF





★ Branch Executive Quarter			
1. Chesapeake Square Mall - Target - Rack Roo Shoes - Burlington - JC Penny - The Children's Place	5. Home Depot	9. Red Lobster	16. Red Robin
2. Walmart	6. The Crossroads @ Chesapeake Sq. - Old Navy - Best Buy - Aldi - Tuesday Morning	10. Olive Garden	17. Outback Steakhouse
3. Sam's Club	7. Food Lion	11. Golden Corral	18. PetSmart
4. Target	8. Surf Rider Restaurant	12. Applebee's	19. Big Lots
		13. Office Max	20. BayPort Credit Union
		14. Chili's Grill & Bar	21. Starbucks
		15. Pizza Hut	

Although information has been obtained from sources deemed reliable, neither Owner nor JLL makes any guarantees, warranties or representations, express or implied, as to the completeness or accuracy as to the information contained herein. Any projections, opinions, assumptions or estimates used are for example only. There may be differences between projected and actual results, and those differences may be material. The Property may be withdrawn without notice. Neither Owner nor JLL accepts any liability for any loss or damage suffered by any party resulting from reliance on this information. If the recipient of this information has signed a confidentiality agreement regarding this matter, this information is subject to the terms of that agreement. © 2025 Jones Lang LaSalle Brokerage, Inc. All rights reserved.