

For lease

3700 W Industries Rd
Richmond, IN 47374



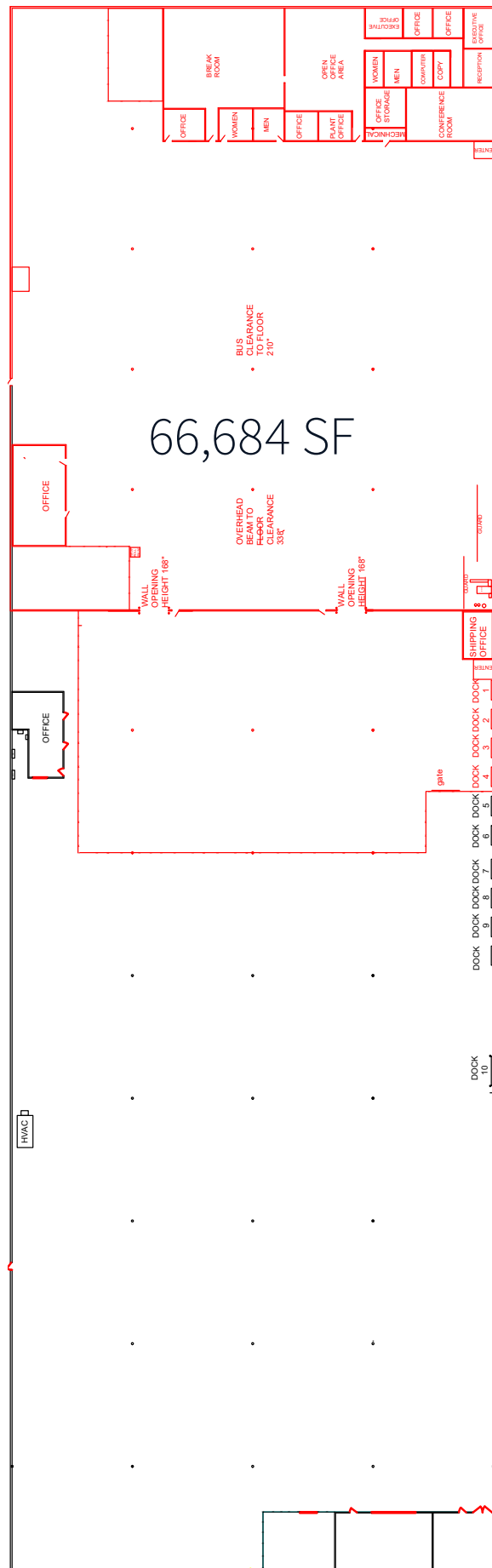
Location

Richmond Indiana is situated in east-central Indiana, close to the Ohio border. This location provides easy access to major metropolitan areas like Indianapolis, Cincinnati, and Dayton.

Richmond is an appealing location for industrial businesses looking for a cost-effective location with good logistics and a supportive business environment.



Floor plan



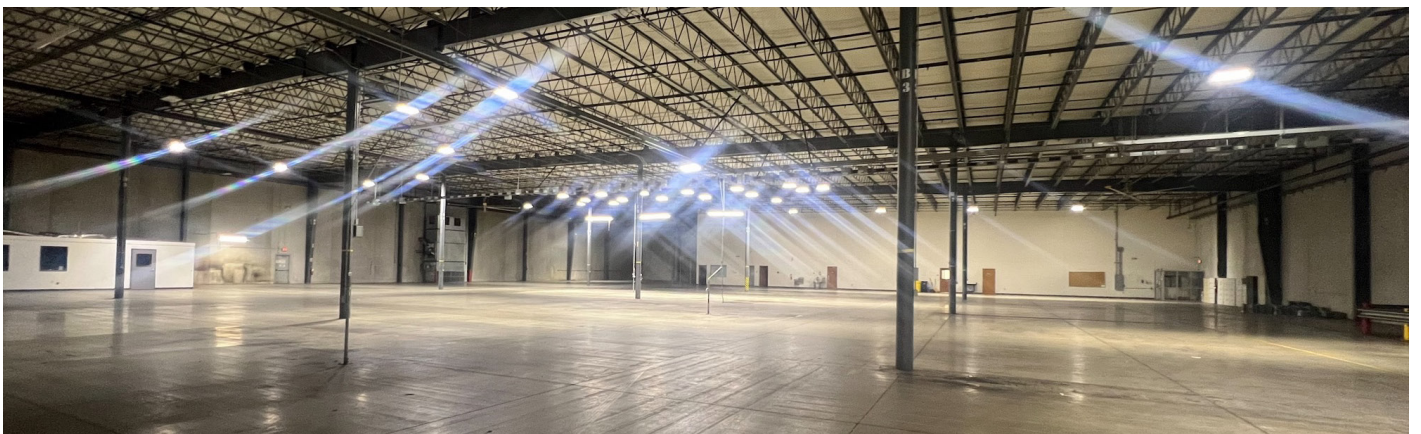
Property highlights

Building s.f.	131,000 s.f.
Available s.f.	131,000 s.f. divisible
Office s.f.	±7,609 s.f.
Clear height	26.5' - 29'
Column spacing	50' x 50' & 51' x 50'
Dock doors	9 (front load)
HVAC	Climate controlled warehouse
Auto parking	±135
Trailer parking	5
Lighting	LED with motion sensors
Electrical	4,000 amp, 3 phase, 480v

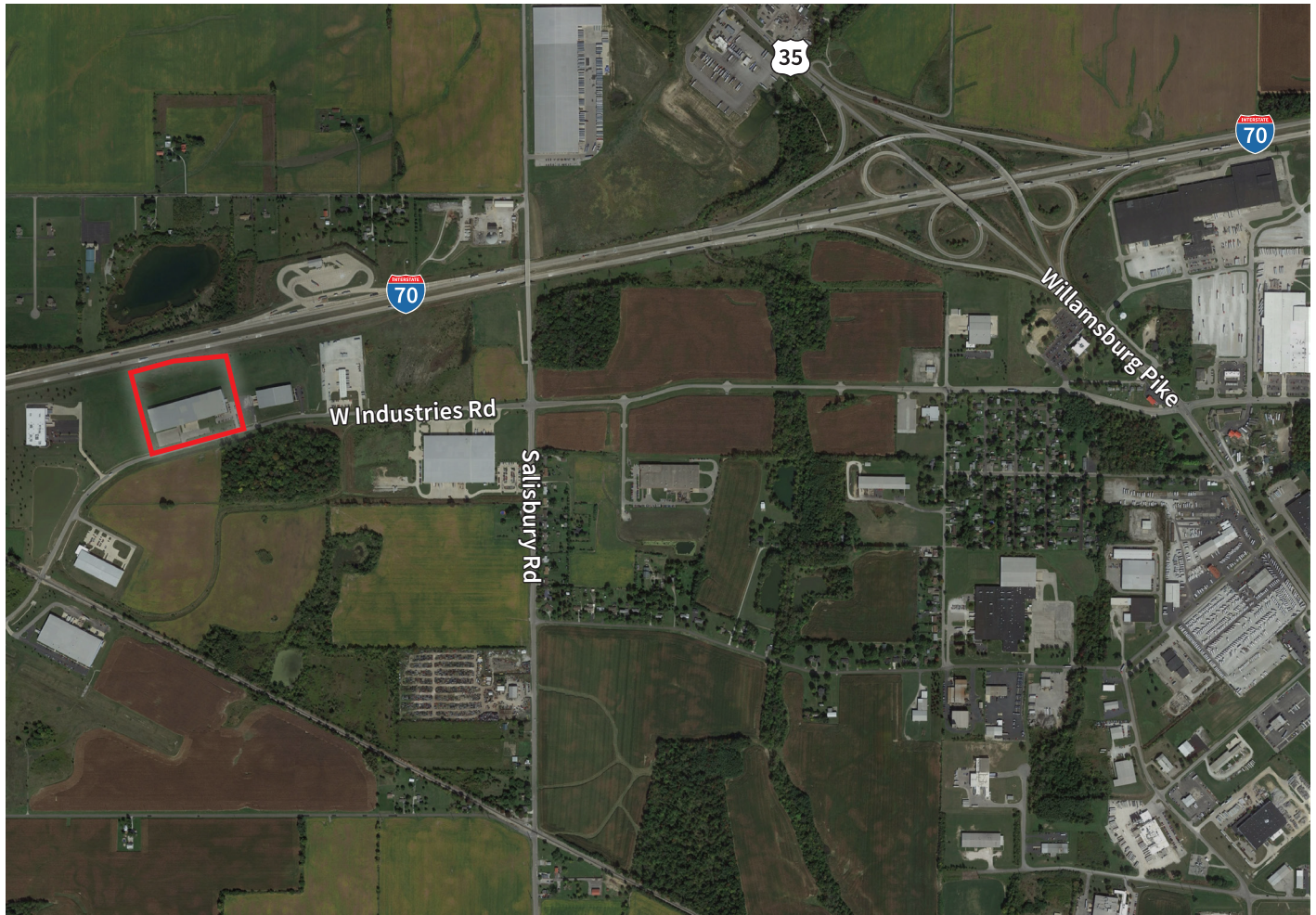
Half building highlights

Available s.f.	66,684 s.f. divisible to ±33,000 SF
Office s.f.	±6,698 s.f.
Dock doors	4 (front load)

Property photographs



3700 W Industries Rd., Richmond, IN - Aerial view



Distance to



1.5 miles

Dayton, OH

51.1 miles



1.7 miles

Indianapolis, IN

67.8 miles

Downtown Richmond 4.6 miles

Cincinnati, OH

78.4 miles

Brian Seitz, SIOR
Executive Managing Director
brian.seitz@jll.com
+1 317 810 7184

Danny Scheidler
Executive Vice President
danny.scheidler@jll.com
+1 317 810 7695

Griffin Seitz
Associate
griffin.seitz@jll.com
+1 317 810 7175

Although information has been obtained from sources deemed reliable, JLL does not make any guarantees, warranties or representations, express or implied, as to the completeness or accuracy as to the information contained herein. Any projections, opinions, assumptions or estimates used are for example only. There may be differences between projected and actual results, and those differences may be material. JLL does not accept any liability for any loss or damage suffered by any party resulting from reliance on this information. If the recipient of this information has signed a confidentiality agreement with JLL regarding this matter, this information is subject to the terms of that agreement. ©2025 Jones Lang LaSalle IP, Inc. All rights reserved.