



1450

FRAZEE ROAD

SAN DIEGO, CA

www.1450frazee.com



Jones Lang LaSalle Brokerage, Inc. RE license #01856260

new lobby.
new enhancements.
new spec suites.



1st Floor Lobby & Common
Area Improvements

1450 Frazee is ideally situated in the heart of Mission Valley, one of San Diego's most prominent business areas.

1450 Frazee is easy walking distance to numerous retail amenities such as fine dining restaurants, fast/casual food options and full-service retail centers.

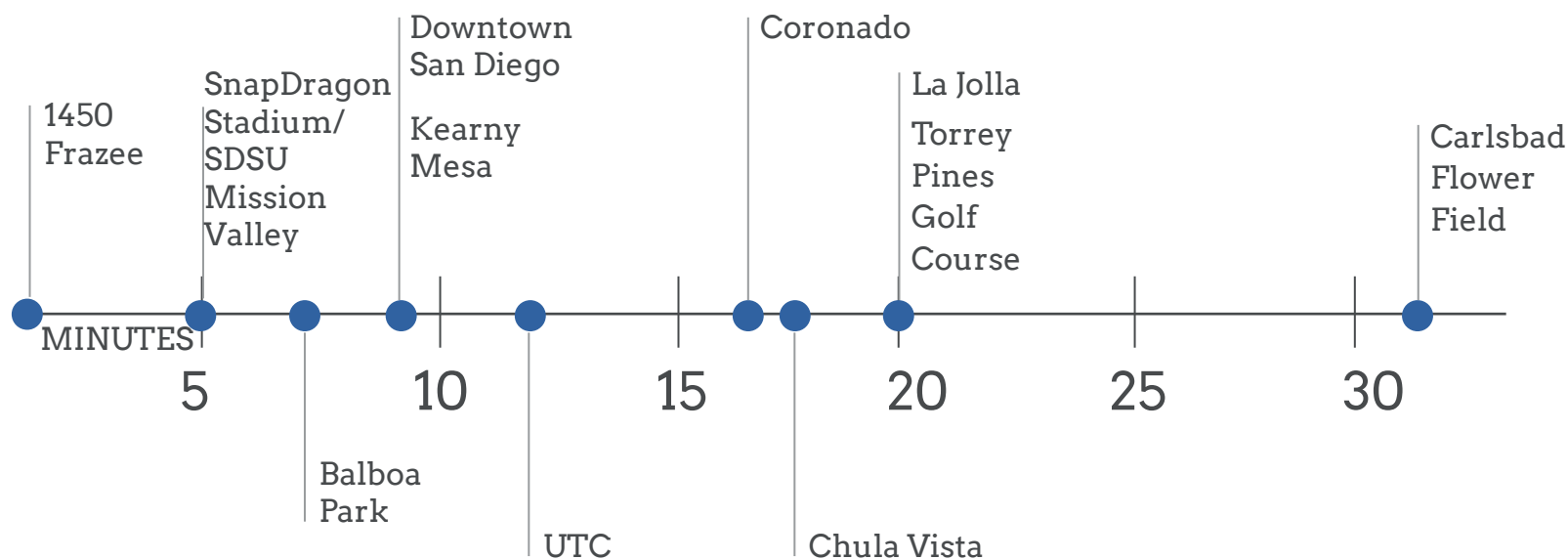
Recent project enhancements at 1450 Frazee include modernization of the 1st floor lobby and conference center, remodeled upper floor common areas and a covered outdoor seating area.

Multiple suites in a variety of size ranges are available offering move-in ready solutions to meet your business needs.



LOCATION & ACCESS

Drive times





AVAILABILITY

Suite	RSF	Comments
2nd Floor		
200	5,479	Available 10/1/2025. Upgraded suite with kitchen that opens to a private balcony, open ceiling elements throughout. 2 conference rooms, 13 private offices, IT, copy and storage rooms, open area for approx. 14 cubes.
205	2,623	Available with 90 days' notice. Corner suite with 5 private offices, conference room, kitchen and open area.
225	2,146	3 conference rooms, 1 office, large open area and galley kitchen.
4th Floor		
400	2,718	Corner suite! 7 private offices, 2 conference rooms, break and IT room.
405	2,179	Corner suite with 4 private offices, kitchen, IT room and open area.
410	2,356	Large reception area, conference room, 3 offices, break room, server room and open area.
5th Floor		
500	17,586	Efficient existing layout with Reception, 21 offices, open area for 63 workstations, 4 conference rooms, kitchen, IT room and various storage/file/work rooms.
7th Floor		
700	13,085	Penthouse location with Western and Northern views. Efficient combination of private offices and open space.



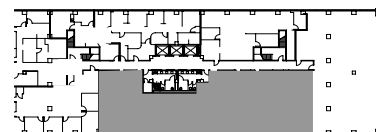
Leasing contacts:

Bess Wakeman
+1 858 410 1245
bess.wakeman@jll.com
RE license #01177659

Tim Olson
+1 858 410 1253
tim.olson@jll.com
RE License #01364117

www.1450frazee.com

5,479 s.f.



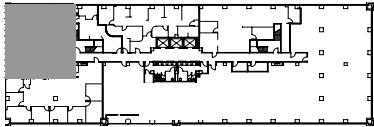
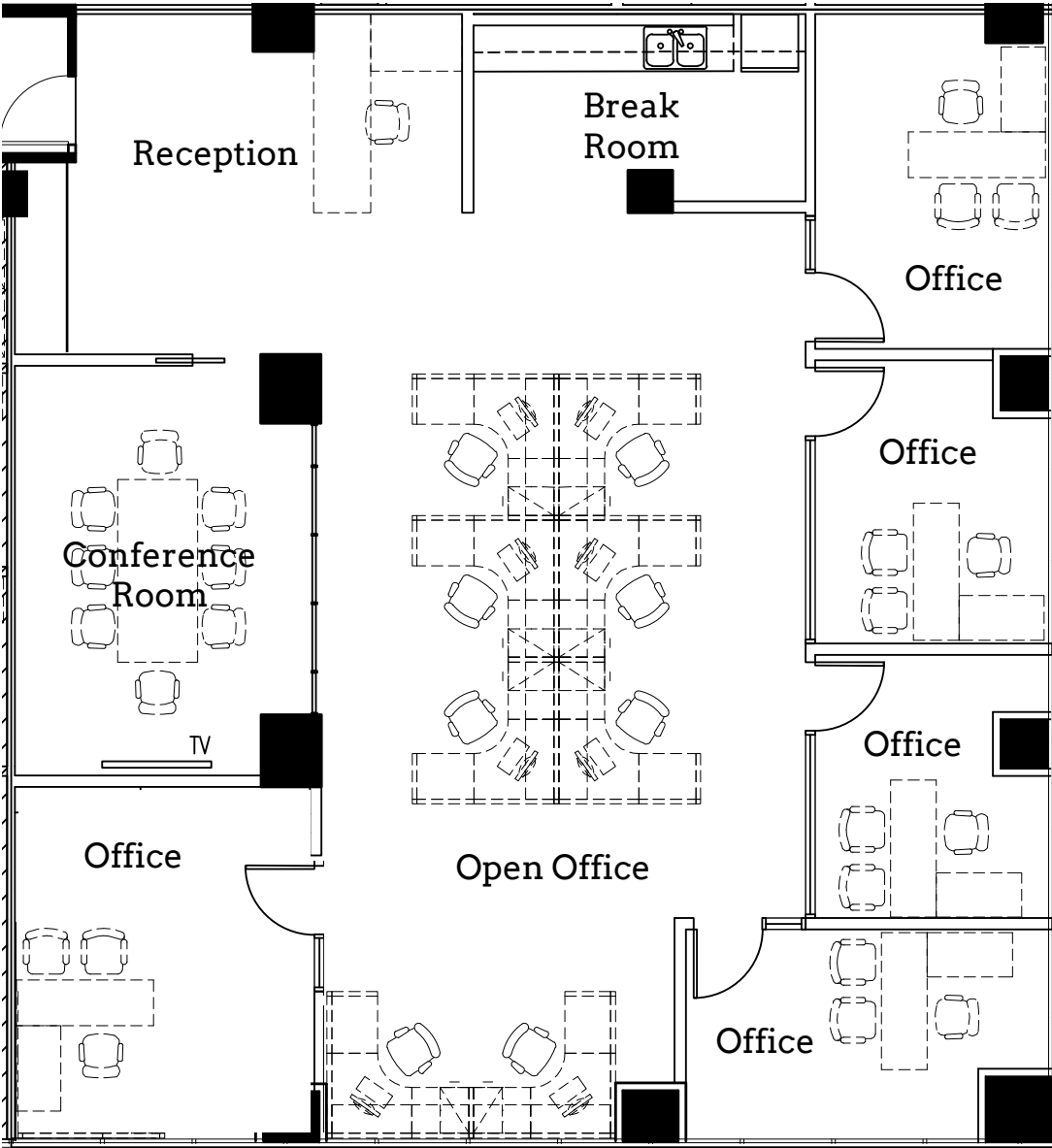
Leasing contacts:
Bess Wakeman
+1 858 410 1245
bess.wakeman@jll.com
RE license #01177659

Tim Olson
+1 858 410 1253
tim.olson@jll.com
RE License #01364117

www.1450frazee.com

SUITE 205

2,623 s.f.



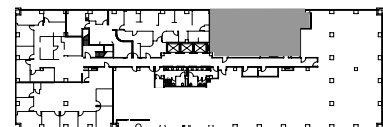
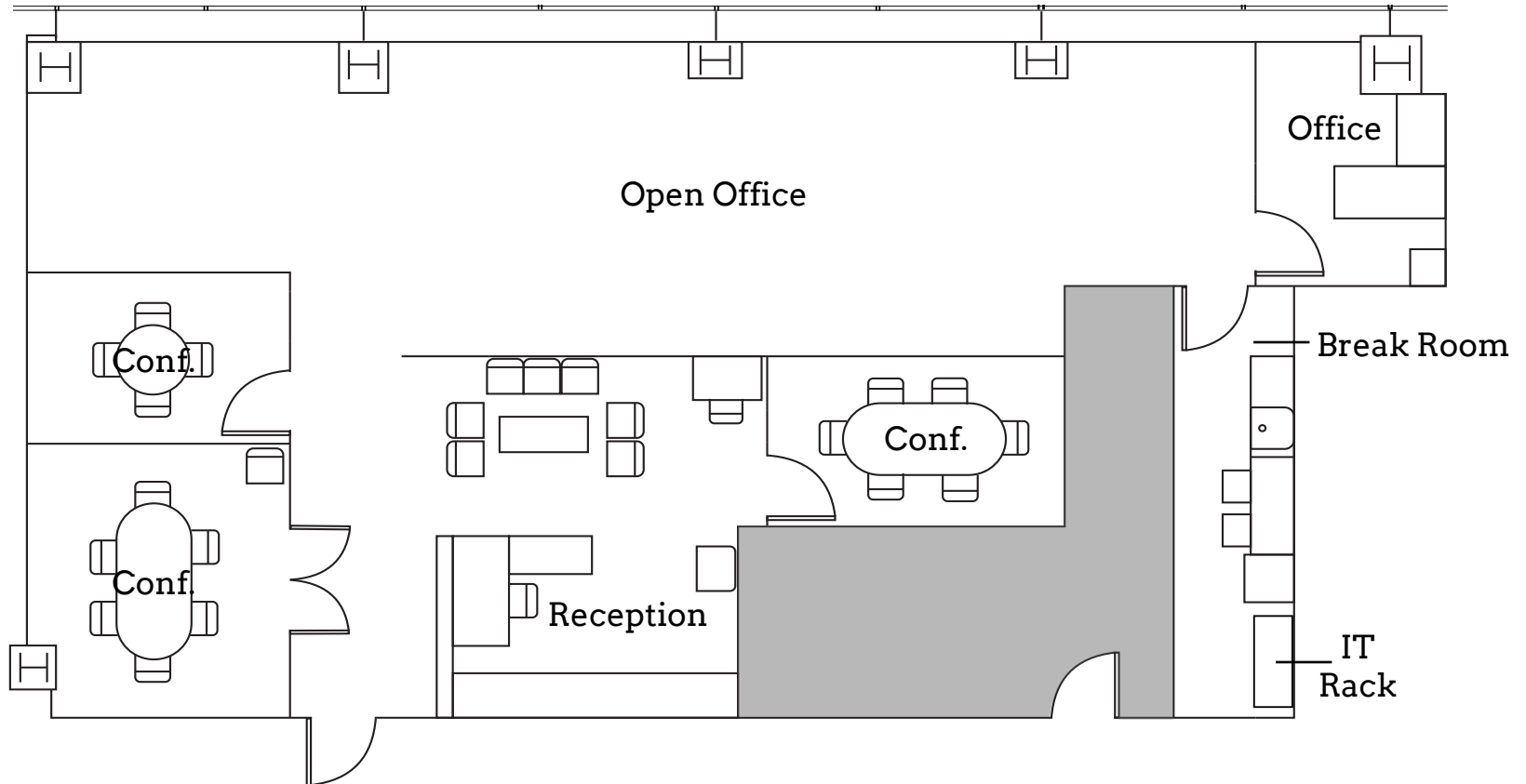
Leasing contacts:
Bess Wakeman
+1 858 410 1245
bess.wakeman@jll.com
RE license #01177659

Tim Olson
+1 858 410 1253
tim.olson@jll.com
RE License #01364117

www.1450frazee.com

SUITE 225

2,146 s.f.



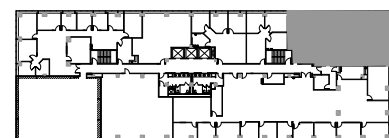
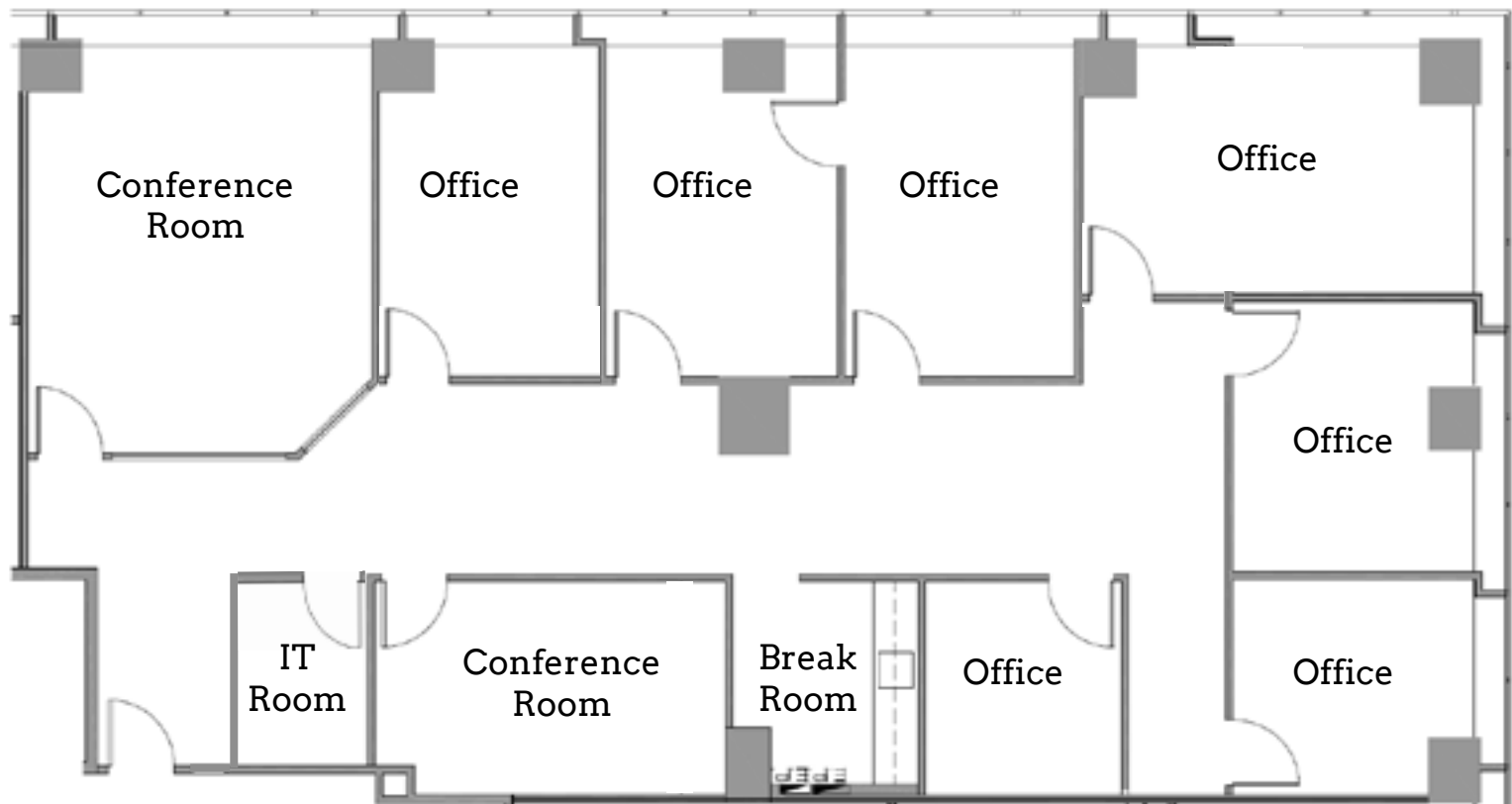
Leasing contacts:
Bess Wakeman
+1 858 410 1245
bess.wakeman@jll.com
RE license #01177659

Tim Olson
+1 858 410 1253
tim.olson@jll.com
RE License #01364117

www.1450frazee.com

SUITE 400

2,718 s.f.



Leasing contacts:

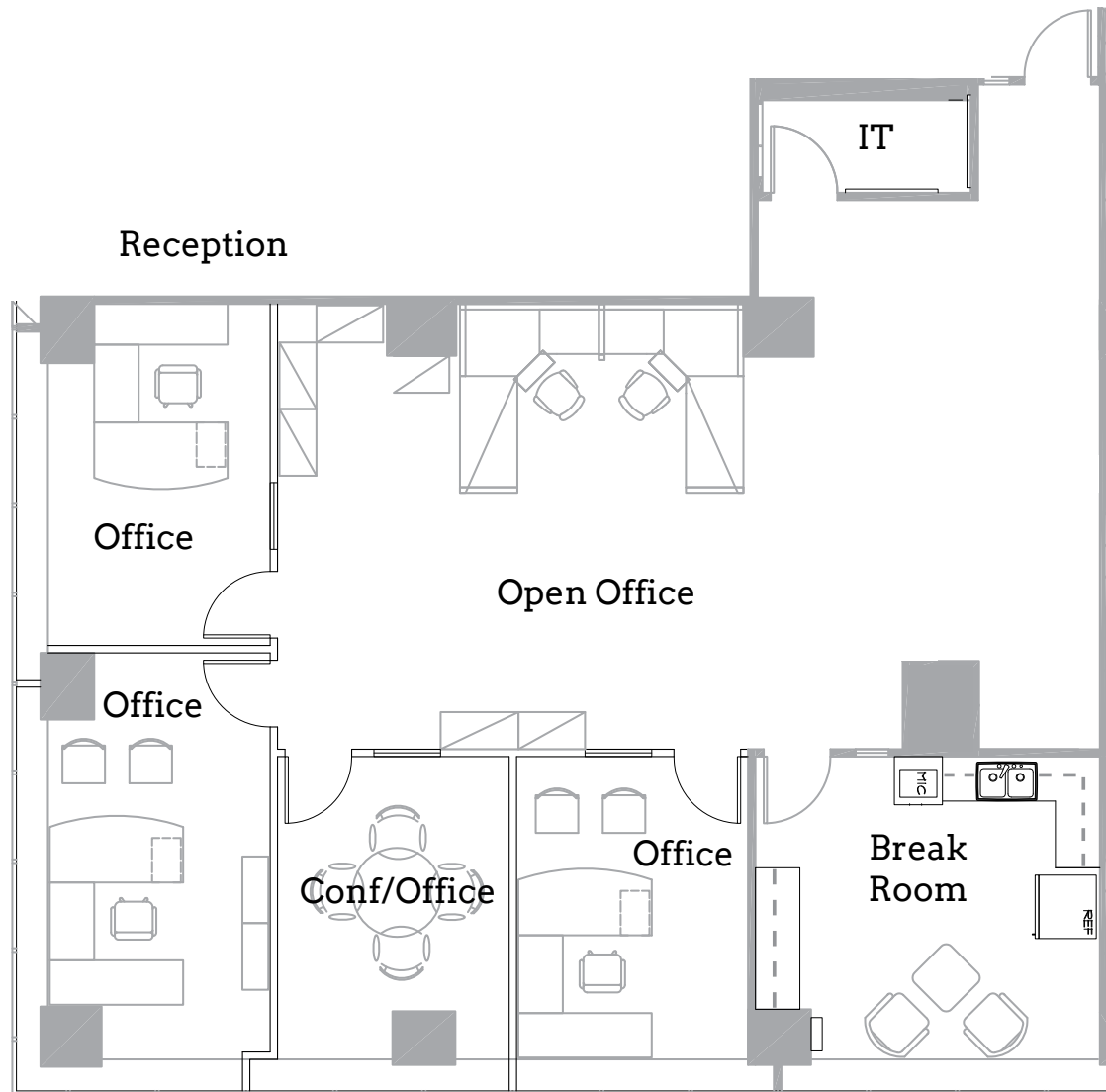
Bess Wakeman
+1 858 410 1245
bess.wakeman@jll.com
RE license #01177659

Tim Olson
+1 858 410 1253
tim.olson@jll.com
RE License #01364117

www.1450frazee.com

SUITE 405

2,179 s.f.



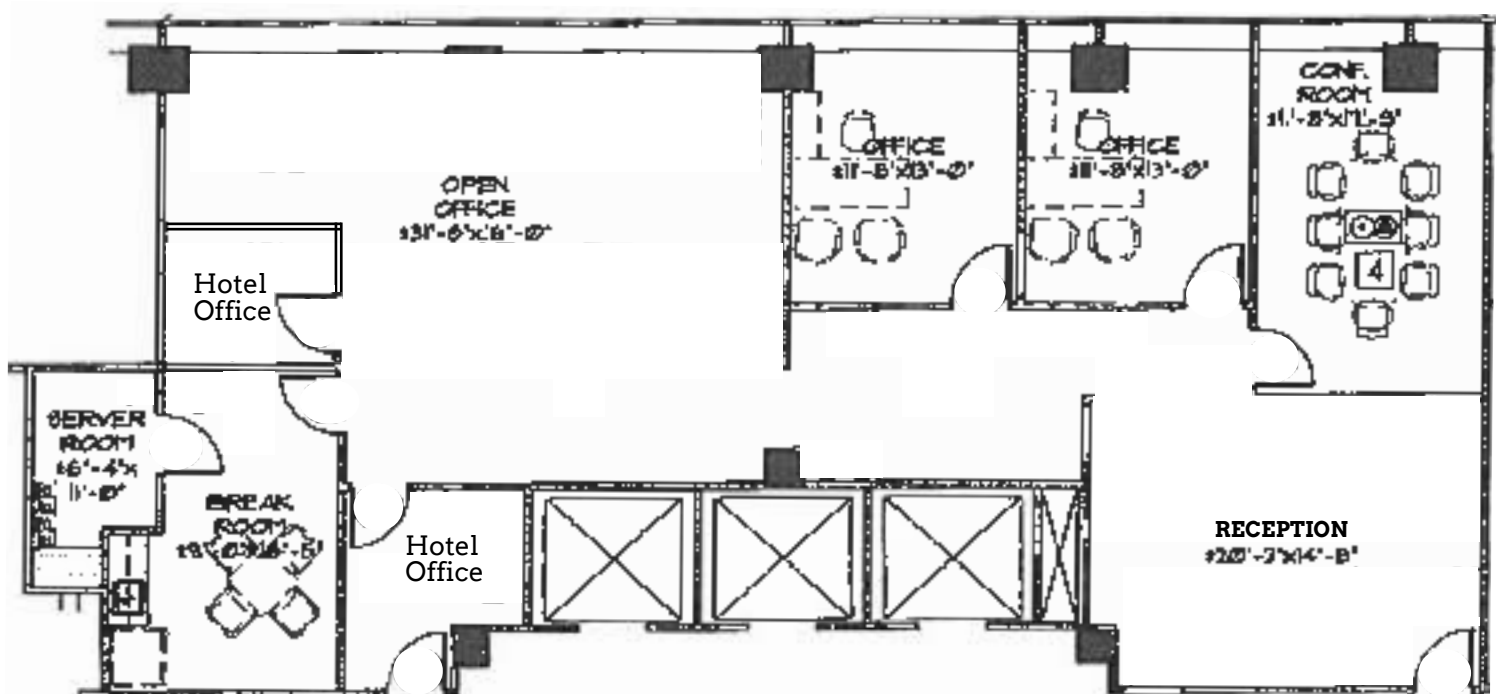
Leasing contacts:
Bess Wakeman
+1 858 410 1245
bess.wakeman@jll.com
RE license #01177659

Tim Olson
+1 858 410 1253
tim.olson@jll.com
RE License #01364117

www.1450frazee.com

SUITE 410

2,356 s.f.



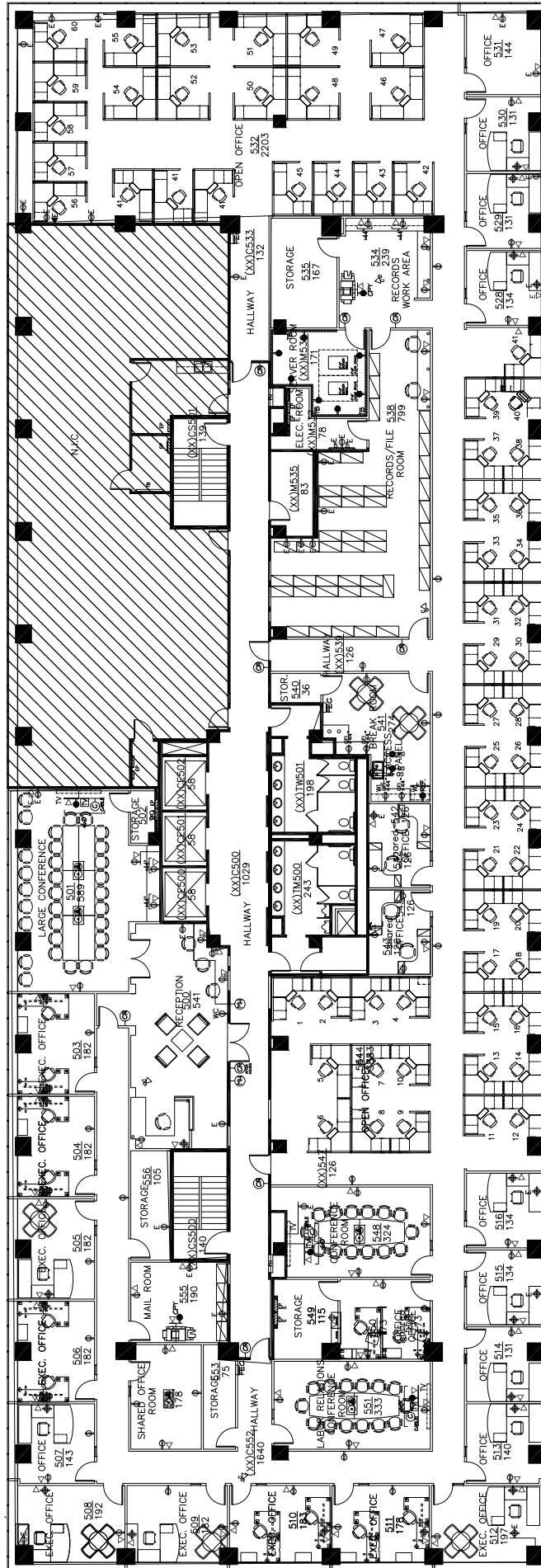
Leasing contacts:
Bess Wakeman
+1 858 410 1245
bess.wakeman@jll.com
RE license #01177659

Tim Olson
+1 858 410 1253
tim.olson@jll.com
RE License #01364117

www.1450frazee.com

SUITE 500

±17,586 s.f.



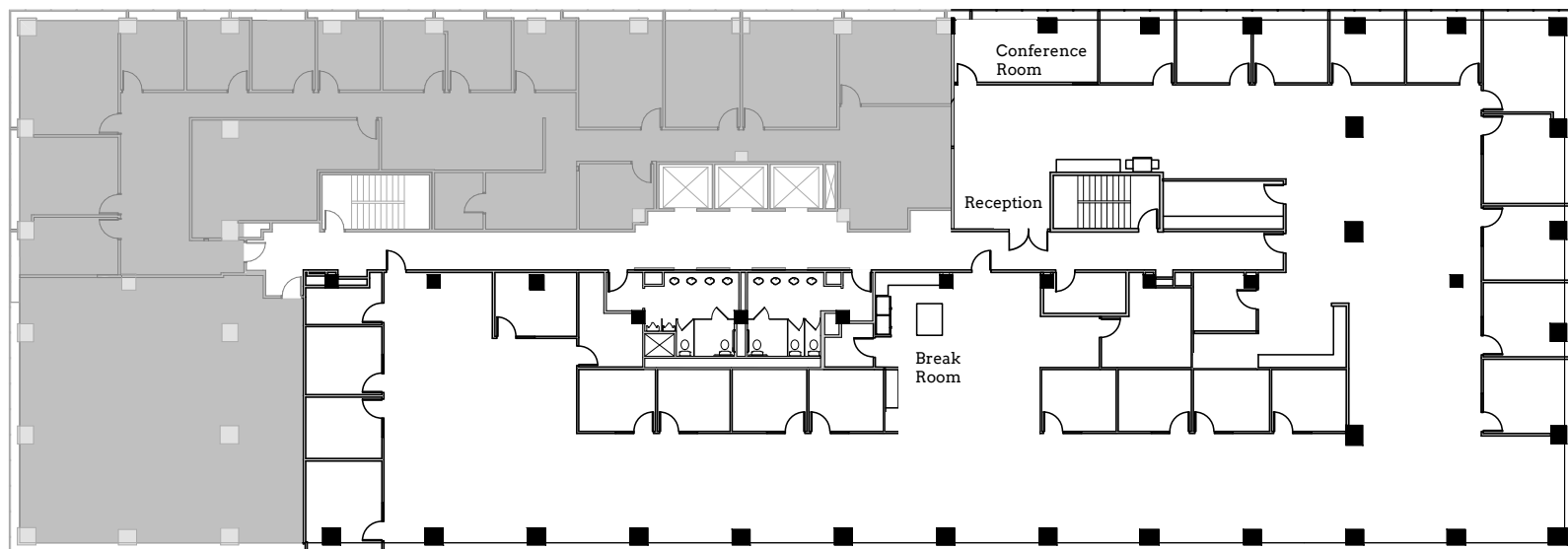
Leasing contacts:
 Bess Wakeman
 +1 858 410 1245
 bess.wakeman@jll.com
 RE license #01177659

Tim Olson
 +1 858 410 1253
 tim.olson@jll.com
 RE License #01364117

www.1450frazee.com

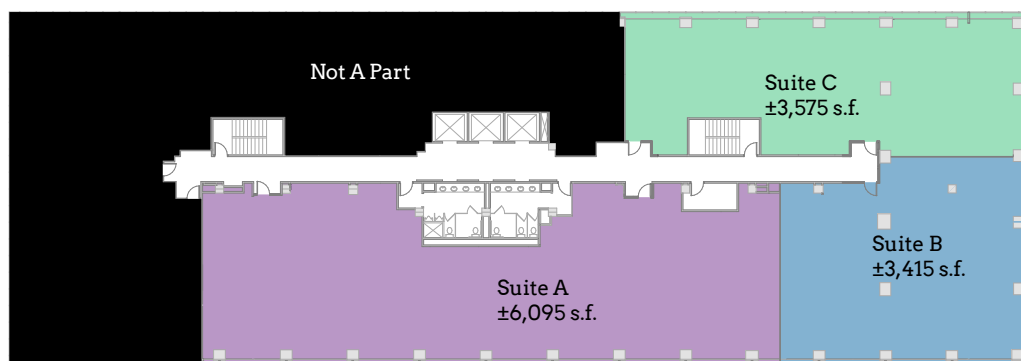
SUITE 700 | AS-BUILT

±13,085 s.f.

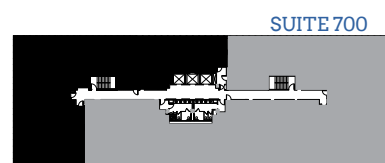
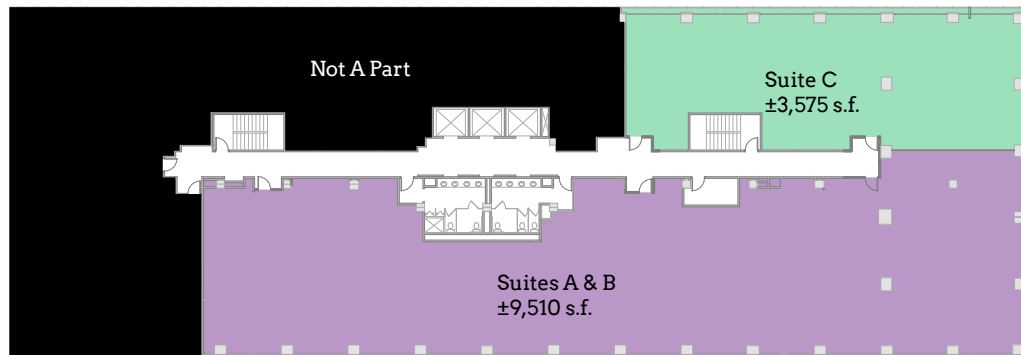


SUITE 700 | DEMISING OPTIONS

OPTION 1: 3 SUITES



OPTION 2: 2 SUITES

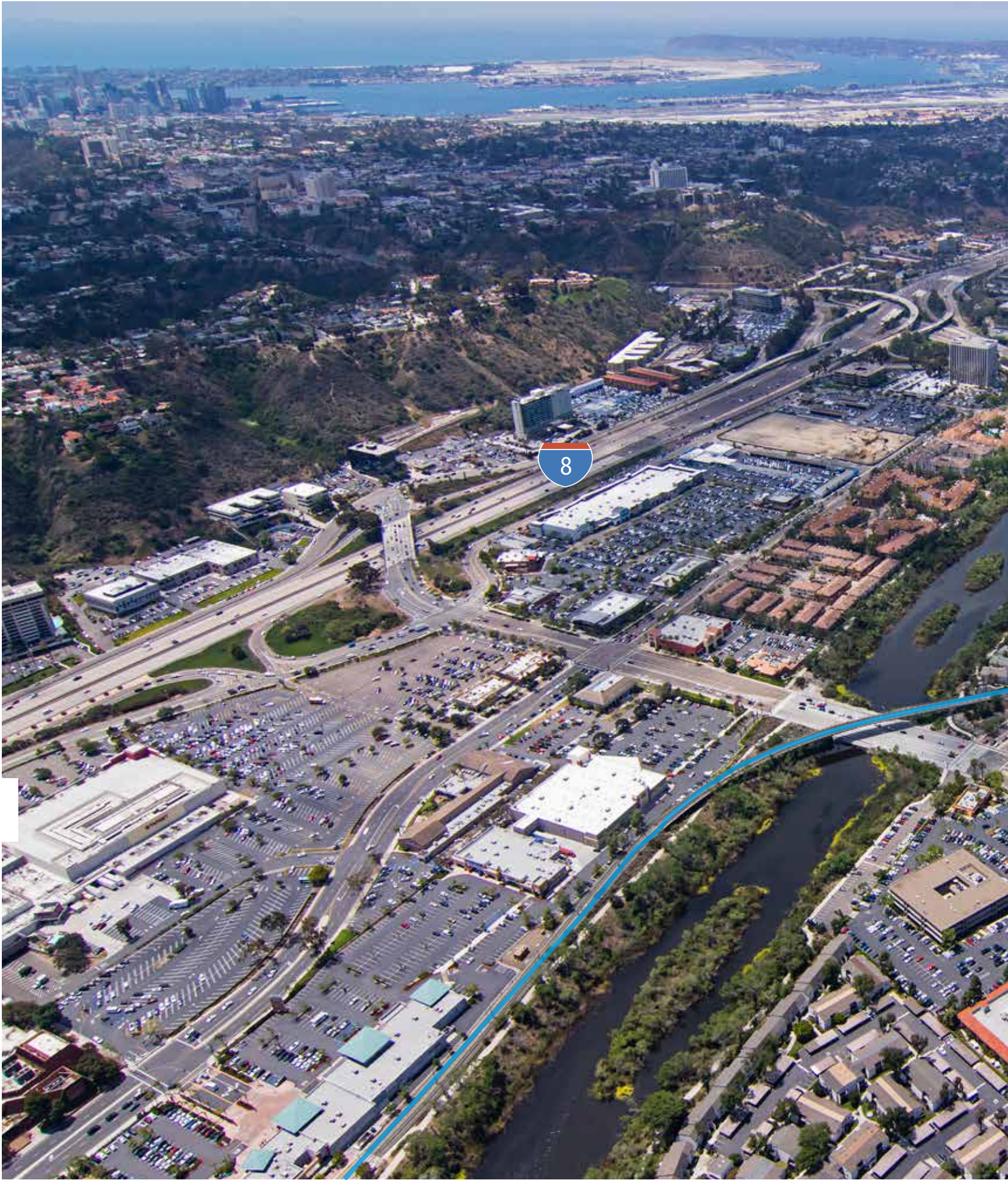


Leasing contacts:

Bess Wakeman
+1 858 410 1245
bess.wakeman@jll.com
RE license #01177659

Tim Olson
+1 858 410 1253
tim.olson@jll.com
RE License #01364117

www.1450frazee.com



Leasing contacts:

Bess Wakeman
+1 858 410 1245
bess.wakeman@jll.com
RE license #01177659

Tim Olson
+1 858 410 1253
tim.olson@jll.com
RE License #01364117

www.1450frazee.com



Leasing contacts:
Bess Wakeman
+1 858 410 1245
bess.wakeman@jll.com
RE license #01177659

Tim Olson
+1 858 410 1253
tim.olson@jll.com
RE License #01364117

www.1450frazee.com

1450

FRAZEE ROAD

SAN DIEGO, CA

www.1450frazee.com



Leasing contacts:

Bess Wakeman
+1 858 410 1245
bess.wakeman@jll.com
RE license #01177659

Tim Olson
+1 858 410 1253
tim.olson@jll.com
RE License #01364117

Although information has been obtained from sources deemed reliable, neither Owner nor JLL makes any guarantees, warranties or representations, express or implied, as to the completeness or accuracy as to the information contained herein. Any projections, opinions, assumptions or estimates used are for example only. There may be differences between projected and actual results, and those differences may be material. The Property may be withdrawn without notice. Neither Owner nor JLL accepts any liability for any loss or damage suffered by any party resulting from reliance on this information. If the recipient of this information has signed a confidentiality agreement regarding this matter, this information is subject to the terms of that agreement. ©2025 Jones Lang LaSalle IP, Inc. All rights reserved.