 **JLL** SEE A BRIGHTER WAY

For sale

1640-1700 E. Nine Mile Road
Ferndale, MI
57,031 SF Available



Property Highlights

- 14'-18' clear
- Two exterior docks
- Three 12' x 14' grade level doors
- Dry fire suppression system
- 0.20 acre vacant lot across 9 Mile Road will be sold with the building
- Gated parking and outdoor storage
- Nine Mile Road exposure
- Proximity to I-75 and Woodward Avenue

Asking Price: \$4,500,000

| | |
|-------------------|-----------------------------|
| <i>Location</i> | 1640-1700 E. Nine Mile Road |
| <i>Size</i> | 57,031 SF |
| <i>Year built</i> | 1949/1969 reno |
| <i>Acreage</i> | 2.07 Acres |
| <i>Zoning</i> | LI |

[jll.com](https://www.jll.com)

Zach Resnick

zach.resnick@jll.com

+1 248 535 9647

Ben Schrode

ben.schrode@jll.com

+1 248 581 3325

Although information has been obtained from sources deemed reliable, JLL does not make any guarantees, warranties or representations, express or implied, as to the completeness or accuracy as to the information contained herein. Any projections, opinions, assumptions or estimates used are for example only. There may be differences between projected and actual results, and those differences may be material. JLL does not accept any liability for any loss or damage suffered by any party resulting from reliance on this information. If the recipient of this information has signed a confidentiality agreement with JLL regarding this matter, this information is subject to the terms of that agreement. ©2024. Jones Lang LaSalle IP, Inc. All rights reserved.



jll.com

Zach Resnick

zach.resnick@jll.com

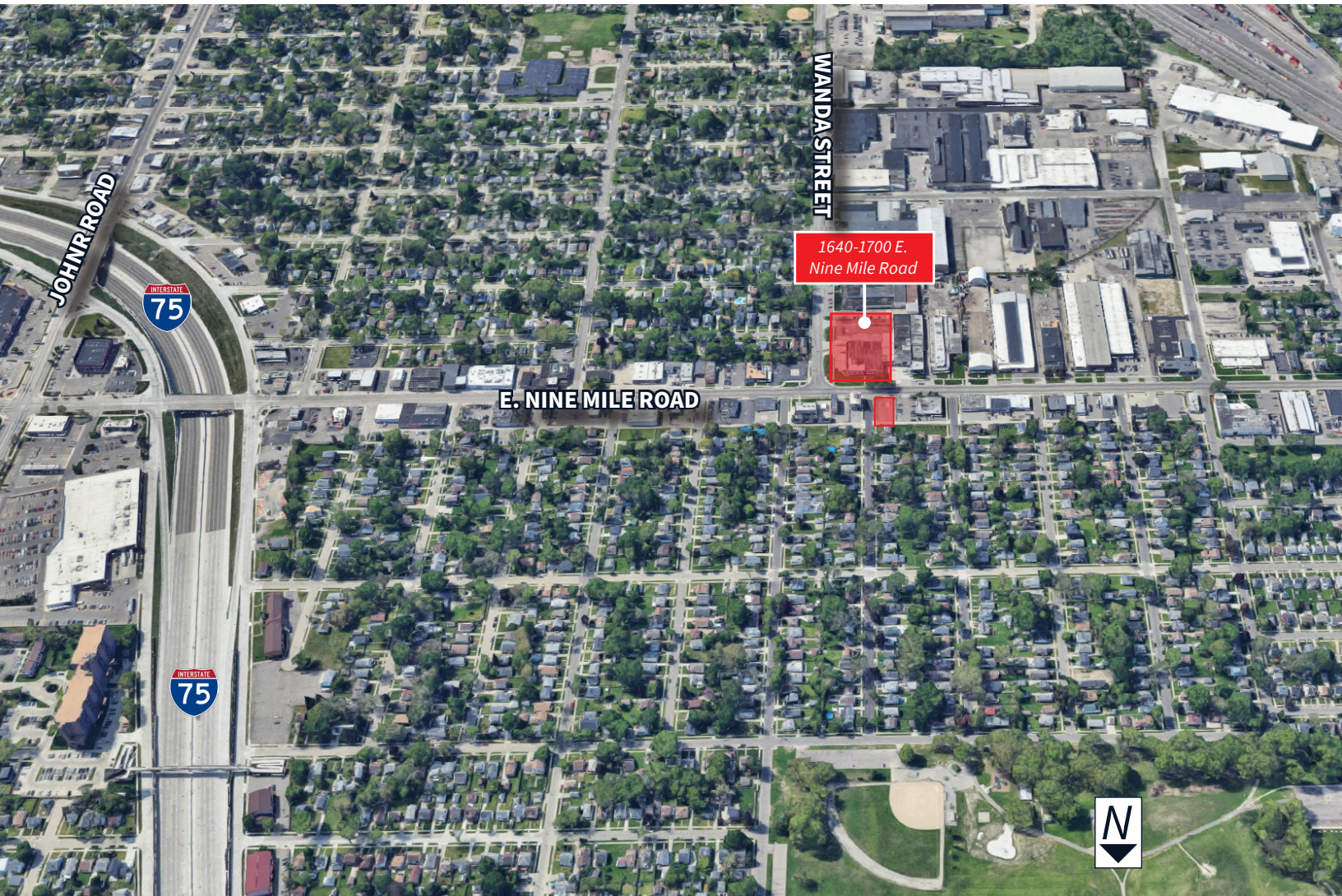
+1 248 535 9647

Ben Schrode

ben.schrode@jll.com

+1 248 581 3325

Although information has been obtained from sources deemed reliable, JLL does not make any guarantees, warranties or representations, express or implied, as to the completeness or accuracy as to the information contained herein. Any projections, opinions, assumptions or estimates used are for example only. There may be differences between projected and actual results, and those differences may be material. JLL does not accept any liability for any loss or damage suffered by any party resulting from reliance on this information. If the recipient of this information has signed a confidentiality agreement with JLL regarding this matter, this information is subject to the terms of that agreement. ©2024. Jones Lang LaSalle IP, Inc. All rights reserved.



12'x14'
Grade Level Doors

2.07
Acres

14'-18'
Clear

jll.com

Zach Resnick
zach.resnick@jll.com
+1 248 535 9647

Ben Schrode
ben.schrode@jll.com
+1 248 581 3325

Although information has been obtained from sources deemed reliable, JLL does not make any guarantees, warranties or representations, express or implied, as to the completeness or accuracy as to the information contained herein. Any projections, opinions, assumptions or estimates used are for example only. There may be differences between projected and actual results, and those differences may be material. JLL does not accept any liability for any loss or damage suffered by any party resulting from reliance on this information. If the recipient of this information has signed a confidentiality agreement with JLL regarding this matter, this information is subject to the terms of that agreement. ©2024. Jones Lang LaSalle IP, Inc. All rights reserved.



jll.com

Zach Resnick

zach.resnick@jll.com

+1 248 535 9647

Ben Schrode

ben.schrode@jll.com

+1 248 581 3325

Although information has been obtained from sources deemed reliable, JLL does not make any guarantees, warranties or representations, express or implied, as to the completeness or accuracy as to the information contained herein. Any projections, opinions, assumptions or estimates used are for example only. There may be differences between projected and actual results, and those differences may be material. JLL does not accept any liability for any loss or damage suffered by any party resulting from reliance on this information. If the recipient of this information has signed a confidentiality agreement with JLL regarding this matter, this information is subject to the terms of that agreement. ©2024. Jones Lang LaSalle IP, Inc. All rights reserved.