

19

UNION SQUARE W

NORTHWEST
CORNER OF 15TH ST.

RETAIL OPPORTUNITY

Corner Flagship in the Heart of Union Square, NYC



For information and a tour please contact:

Bob Gibson | +1 212 812 6421 | Bob.Gibson@jll.com

Alexandra Sanoulis | +1 212 479 9864 | Alexandra.Sanoulis@jll.com



Premises

Ground Floor:	4,940 sf
Lower Level:	4,629 sf
2nd Floor:	6,740 sf

Ceiling Heights

Ground Floor:	16 ft
Lower Level:	11 ft
2nd Floor:	12.7 ft

Frontage

34 ft on Union Square West | 114 ft on 15th Street

Status

Formerly Rookie USA

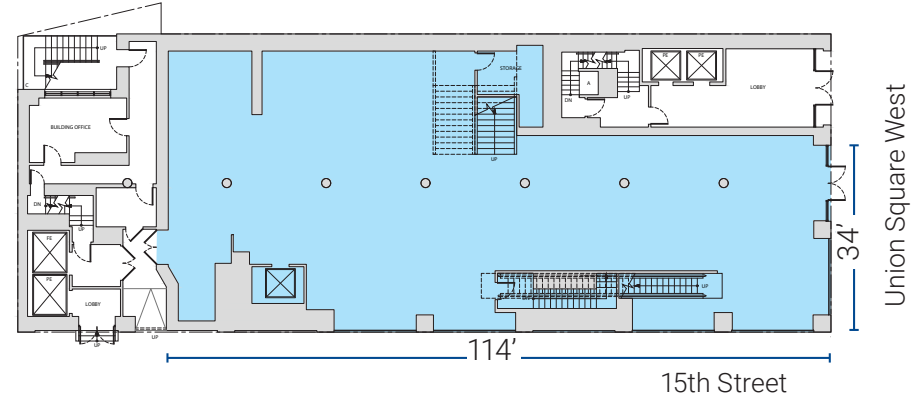
Sublease Term

Through January 31, 2031

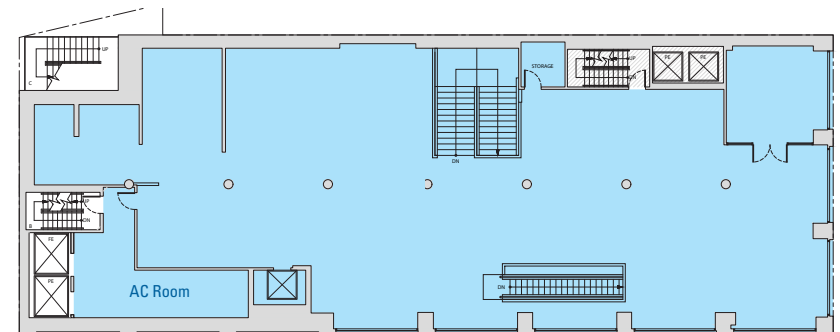
Comments

- Short term / pop-ups will be considered
- Corner exposure in the heart of one of the busiest shopping districts in NYC
- Elevator in place connecting all three levels
- Existing escalator connects the ground and second floors
- Adjacent to the 14th St. / Union Square subway station, the 4th busiest transit hub in NYC, servicing the **N** **Q** **R** **4** **5** **6** **L** lines

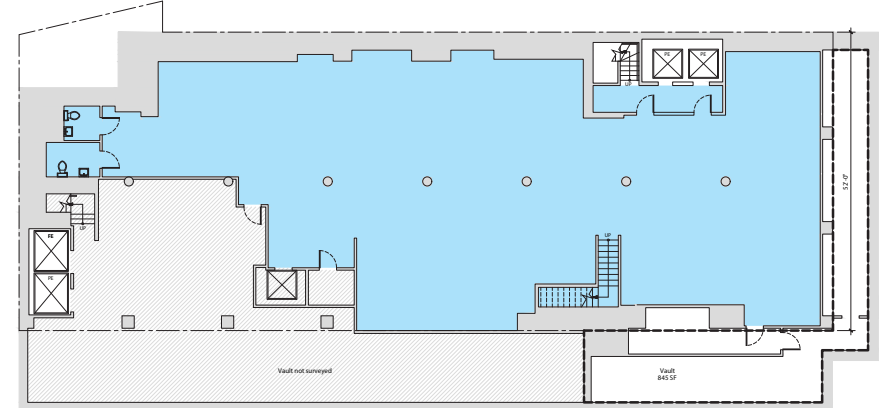
Ground Floor



2nd Floor



Lower Level



Jones Lang LaSalle Brokerage, Inc. | 330 Madison Avenue New York, NY 10017
DISCLAIMER

Although information has been obtained from sources deemed reliable, neither Owner nor JLL makes any guarantees, warranties or representations, express or implied, as to the completeness or accuracy as to the information contained herein. Any projections, opinions, assumptions or estimates used are for example only. There may be differences between projected and actual results, and those differences may be material. The Property may be withdrawn without notice. Neither Owner nor JLL accepts any liability for any loss or damage suffered by any party resulting from reliance on this information. If the recipient of this information has signed a confidentiality agreement regarding this matter, this information is subject to the terms of that agreement. ©2024 Jones Lang LaSalle IP, Inc. All rights reserved.

19 UNION SQUARE W



35M

Annual ridership
14th St.-Union Sq. Station



\$192K

Average household income
within a ¼ mile radius



90K

Students attend
area universities



193K

Daytime population
within a ½ mile radius



THE NEIGHBORHOOD

