

For sublease

2560 W Morris St
Indianapolis IN 46221



Space details

19,421 SF building

2 Drive-in doors

10.88 acre site

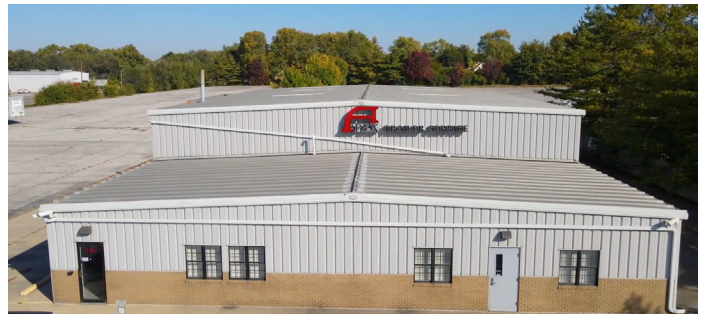
Z001 zoning

Sublease through 12/31/2029

Easy access to I-70



2560 W Morris St., Indianapolis IN 46221



I-70
1.1 mi



**Indianapolis
Int'l Airport**
8.8 mi



**FedEx
Hub**
6.7 mi

Danny Scheidler
Executive Vice President
danny.scheidler@jll.com
+1 317 810 7695

jll.com

Although information has been obtained from sources deemed reliable, JLL does not make any guarantees, warranties or representations, express or implied, as to the completeness or accuracy as to the information contained herein. Any projections, opinions, assumptions or estimates used are for example only. There may be differences between projected and actual results, and those differences may be material. JLL does not accept any liability for any loss or damage suffered by any party resulting from reliance on this information. If the recipient of this information has signed a confidentiality agreement with JLL regarding this matter, this information is subject to the terms of that agreement. ©2025 Jones Lang LaSalle IP, Inc. All rights reserved.