



THE PERFECT SPACE TO SHAPE YOUR IDEAS

1640SEPULVEDA.COM

Jones Lang LaSalle Brokerage, Inc., Real estate license #01856260



A New Experience

1640 Sepulveda has been repositioned in the market under the direction of top LA architect, Shubin + Donaldson.

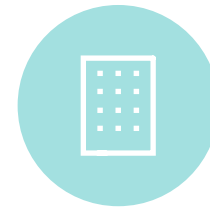
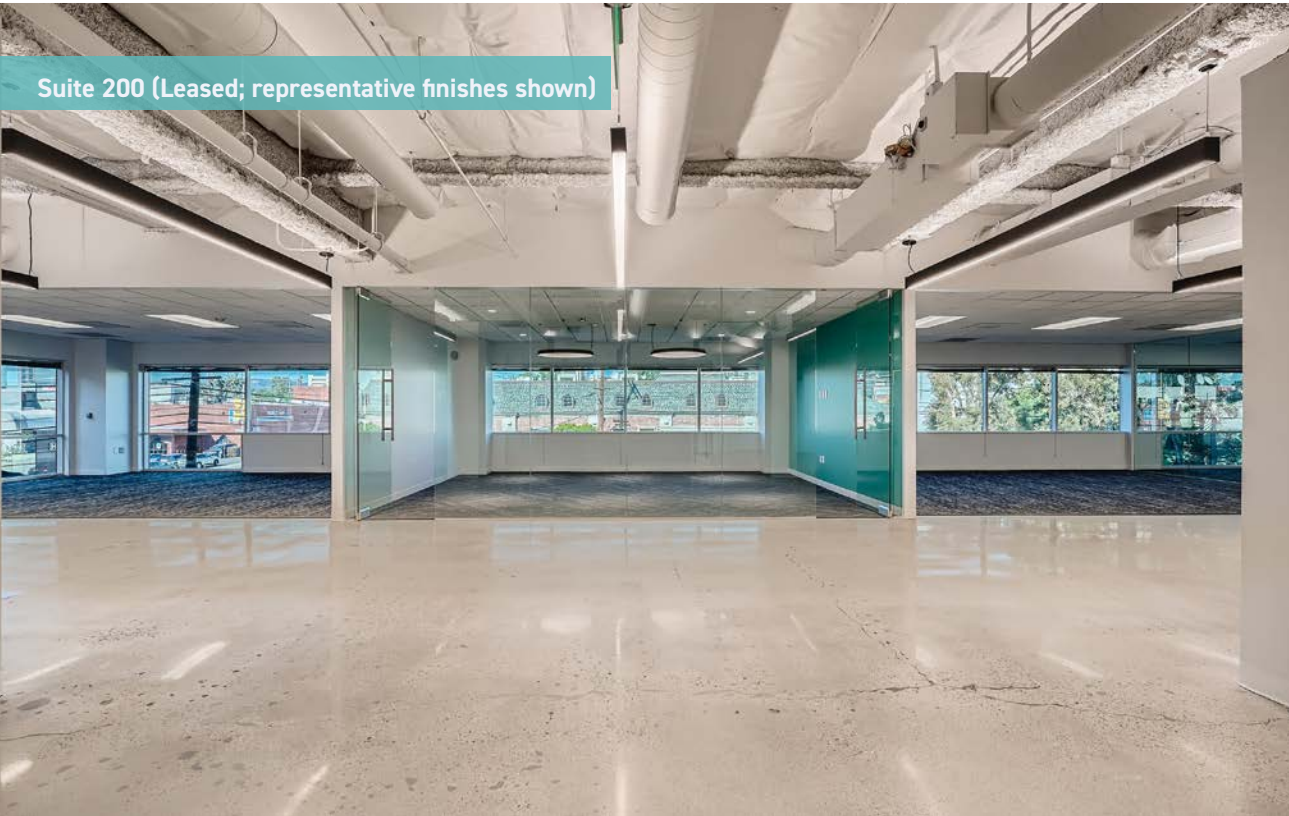
Spaces offer views of Century City, Beverly Hills and Westwood. All tenants enjoy a private patio on the north side of the building with new decking, seating, pergolas and landscaping. Various size spec suites and build to suit.



Suite 200 (Leased; representative finishes shown)



Suite 200 (Leased; representative finishes shown)



5 STORY
Building



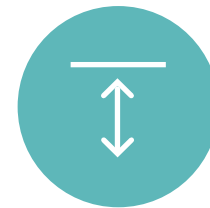
70 SEAT
Screening room



NEWLY CONSTRUCTED
Spec suites



4+:1,000
Parking



UP TO 18'
Ceiling height

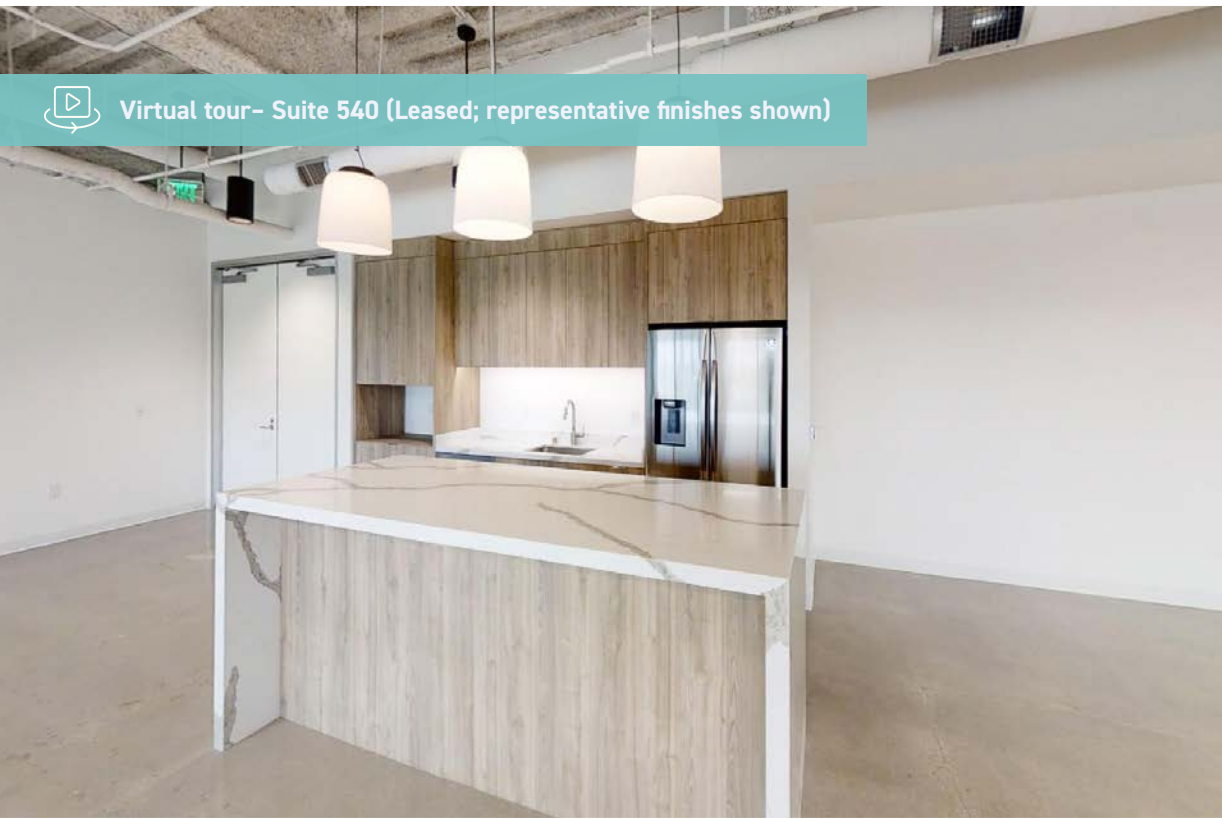


GROUND FLOOR
Tenant patio lounge





Virtual tour - Suite 200 (Leased; representative finishes shown)



Virtual tour- Suite 540 (Leased; representative finishes shown)



Suite 300 (Leased; representative finishes shown)



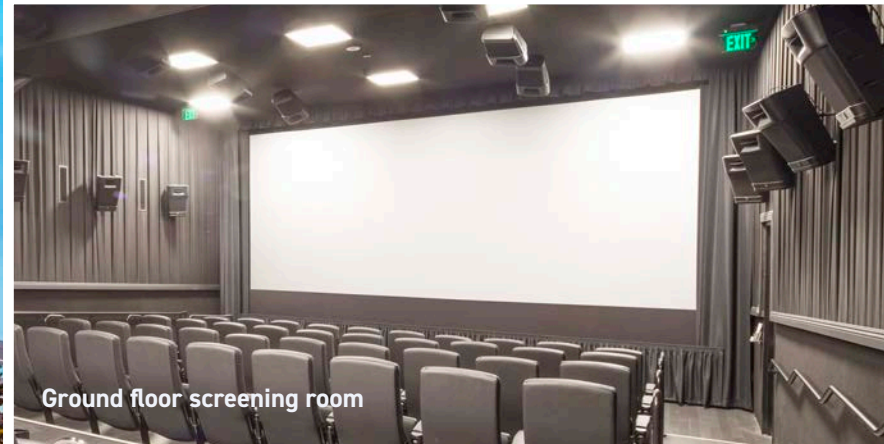
Suite 300 Virtual Tour



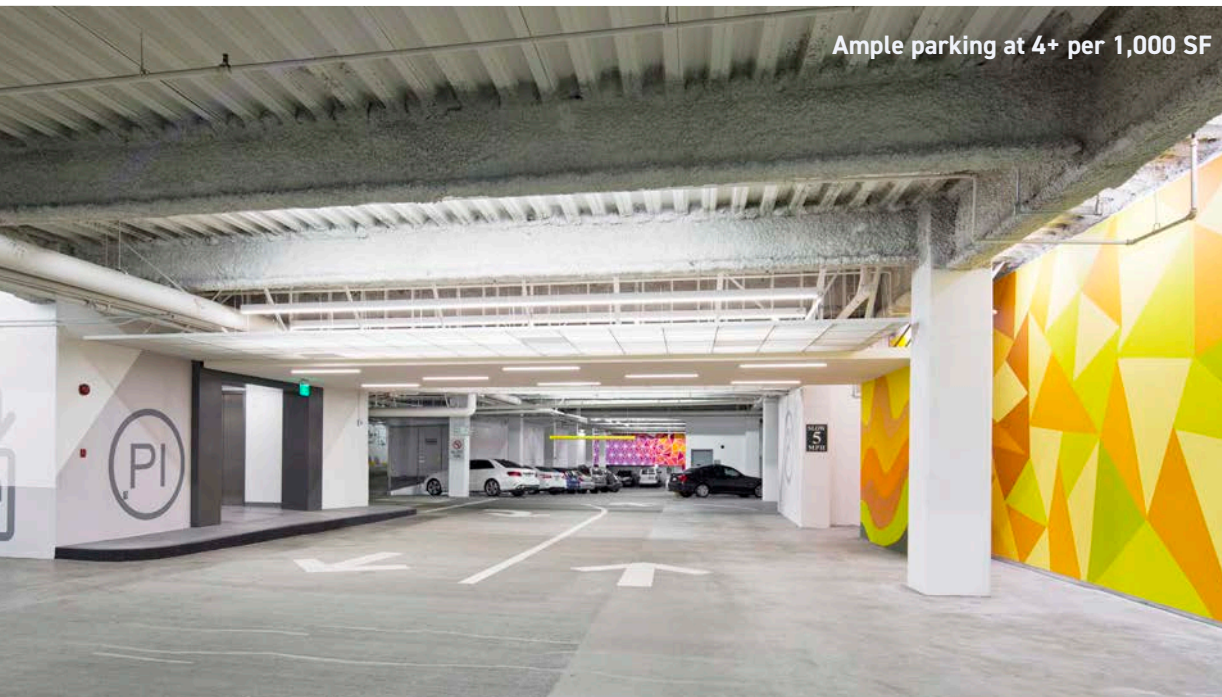
Sunny, collaborative space in the ground floor tenant patio lounge



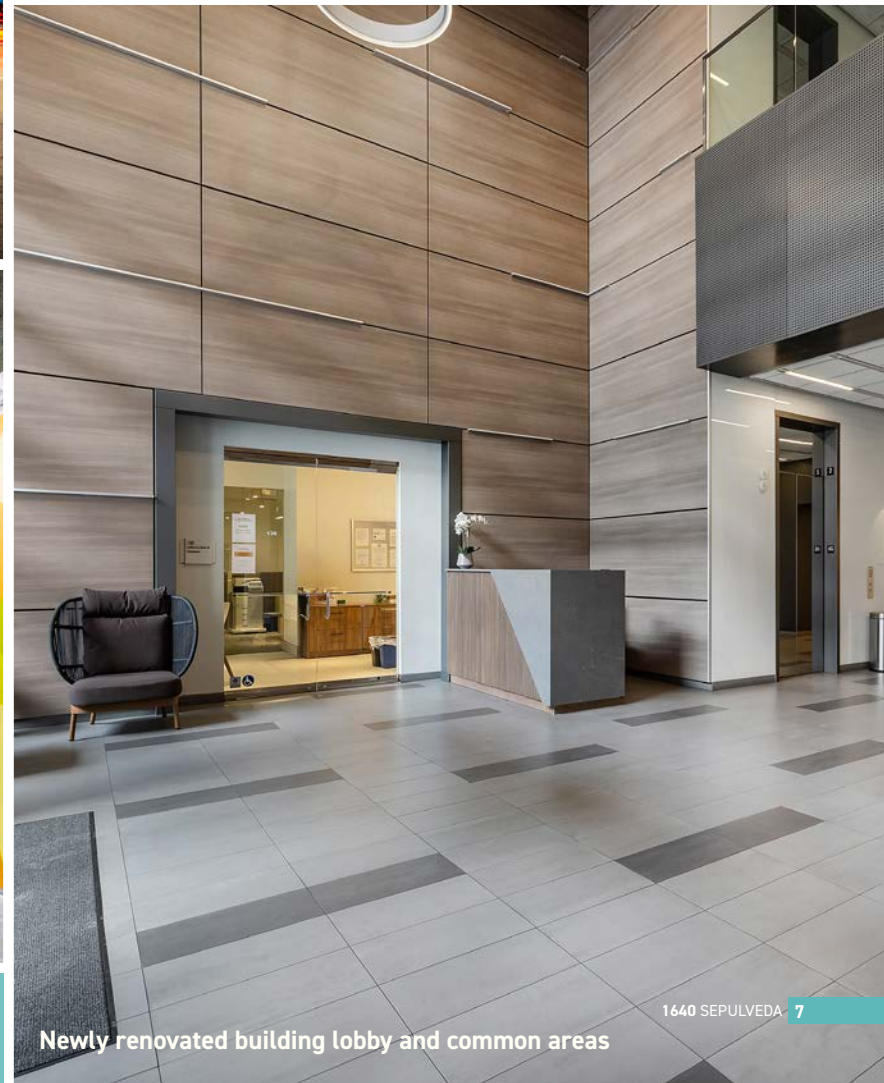
Refreshed exterior and activated patios



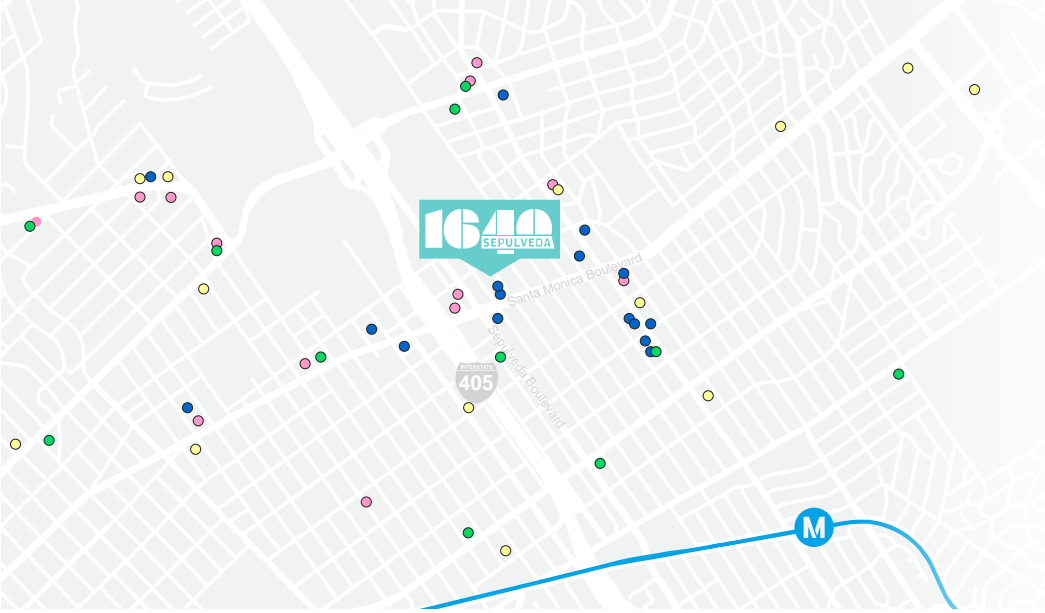
Ground floor screening room



Ample parking at 4+ per 1,000 SF



Newly renovated building lobby and common areas



- Cafes
- Fitness
- Fast Casual Dining
- Formal Dining



The Neighborhood

1640 Sepulveda is centrally located off the 405 Freeway and Santa Monica Boulevard, offering employees the opportunity to shorten their commutes as opposed to Century City or Santa Monica. Nearby amenity highlights include Coffee Bean & Tea Leaf, Starbucks, Hamasaku, Zankou Chicken and Equinox.

Walkable amenities closer to the 405 and transit versus Century City or Westwood





1640SEPULVEDA.COM

JACLYN WARD
Managing Director
+1 310 595 3618
jaclyn.ward@jll.com
Lic. #01912455

BRIAN NIEHAUS
Managing Director
+1 310 595 3824
brian.niehaus@jll.com
Lic. #01836528

CASSIE TROSCLAIR
Executive Vice President
+1 310 595 3613
cassie.troscclair@jll.com
Lic. #02021435



Although information has been obtained from sources deemed reliable, JLL does not make any guarantees, warranties or representations, express or implied, as to the completeness or accuracy as to the information contained herein. Any projections, opinions, assumptions or estimates used are for example only. There may be differences between projected and actual results, and those differences may be material. JLL does not accept any liability for any loss or damage suffered by any party resulting from reliance on this information. If the recipient of this information has signed a confidentiality agreement with JLL regarding this matter, this information is subject to the terms of that agreement. ©2025 Jones Lang LaSalle IP, Inc. All rights reserved.