

For Lease

3600 Green Court, Ann Arbor, MI
Up to 6,988 RSF Available

Rental Rate: \$26.95/RSF + utilities and janitorial

Property Highlights

- Excellent freeway access to US 23
- Property located near the intersection of US 23 and Plymouth Road
- Very close to UM North Campus and UM Medical Center
- 60,744 RSF office building
- Fiber optics on site
- Common shipping and receiving area
- Auditorium available on-site and free to use
- Lower level storage available
- Aggressive packages available for research and medical space
- Ample parking available
- Immediate access to restaurants, hotels, expressways and business services

JLL

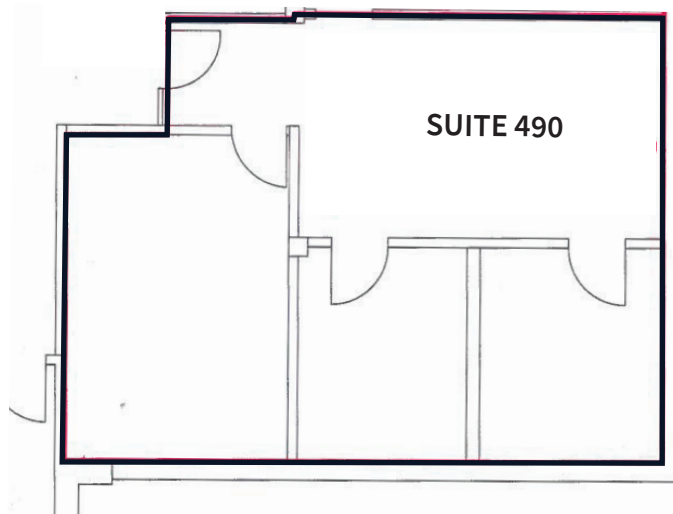
Neal Warling

neal.warling@jll.com

+1 734 769 3201

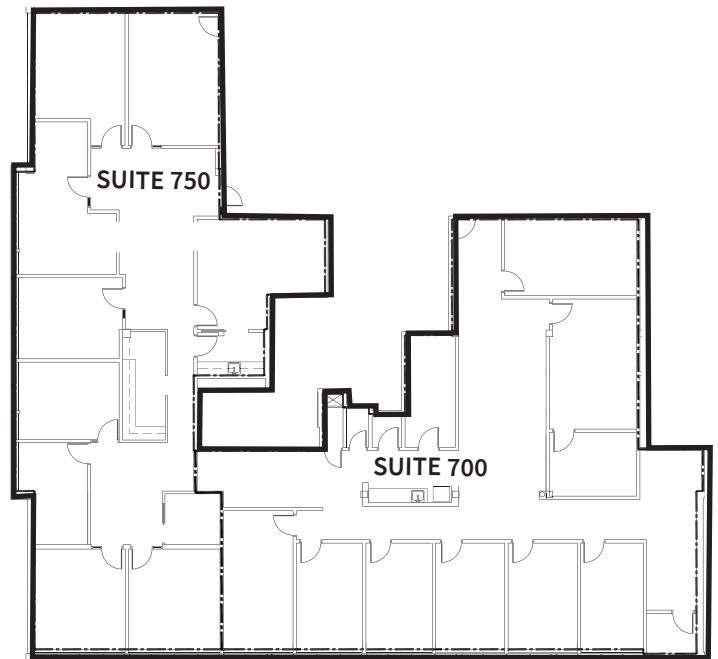
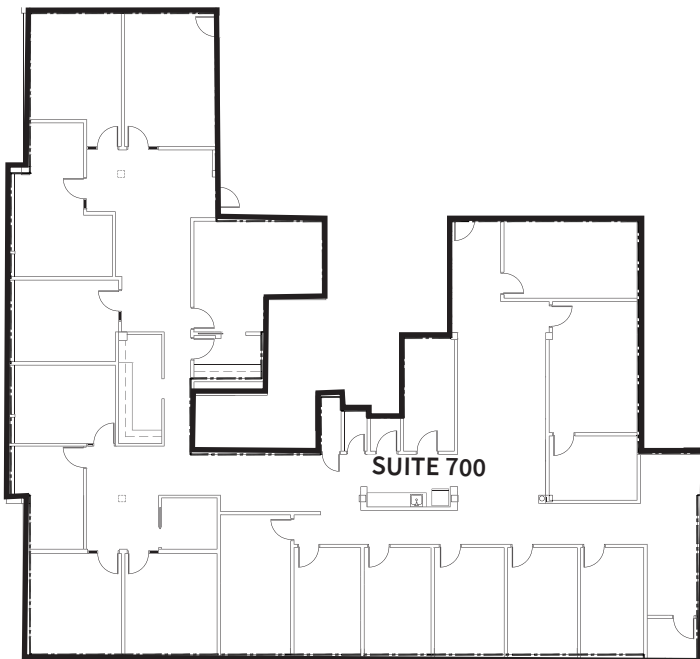
Site Plans

Suite 490 - 790 RSF

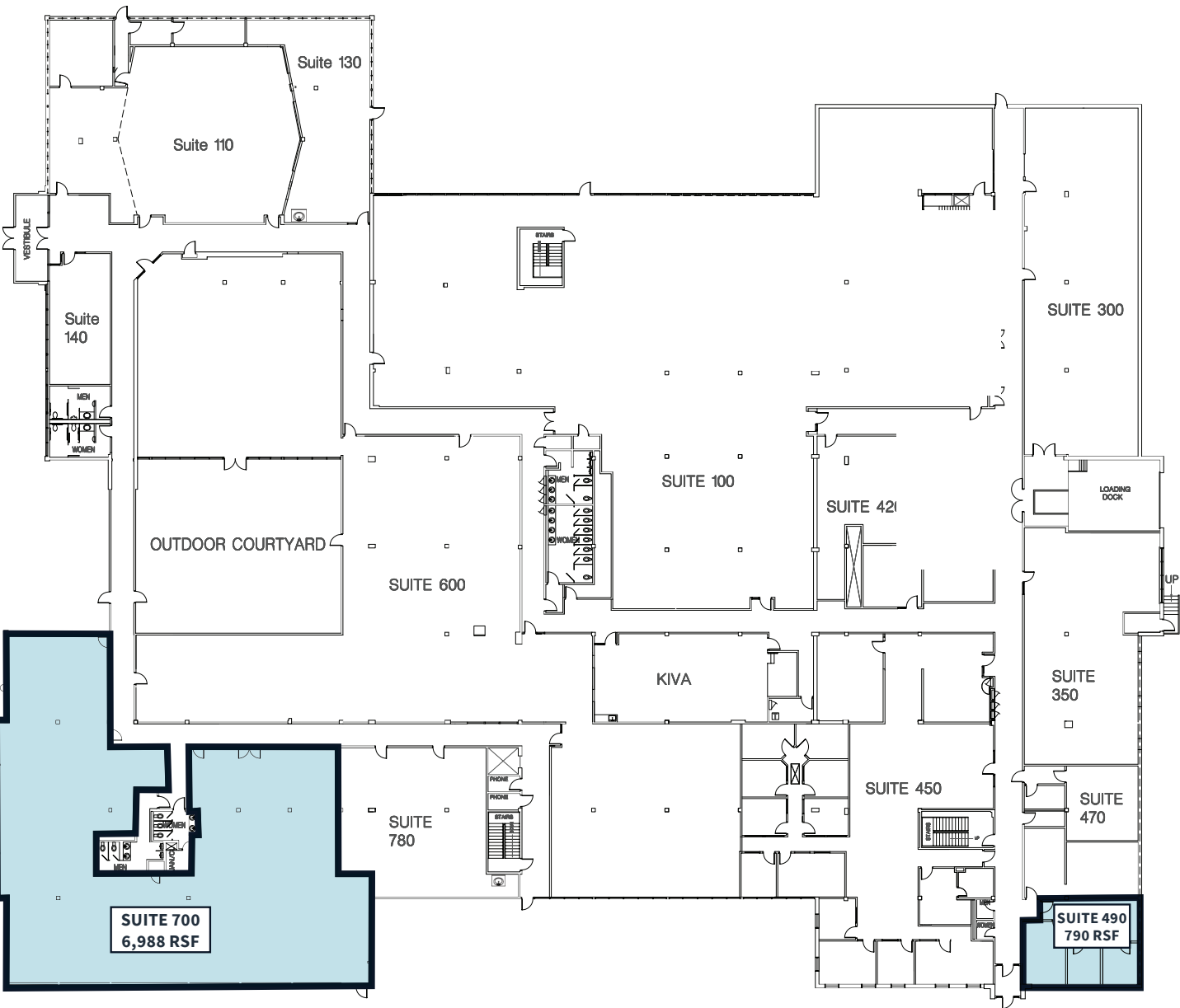


Suite 700 - 6,988 RSF

Suite 700 - 3,684 RSF Suite 750 - 3,304 RSF



Available



JLL

Neal Warling

neal.warling@jll.com

+1 734 769 3201

Photos



JLL

Neal Warling

neal.warling@jll.com

+1 734 769 3201