



For lease

2455 Premier Row, Orlando, FL 32809

351,500 SF available



351,500 SF for lease

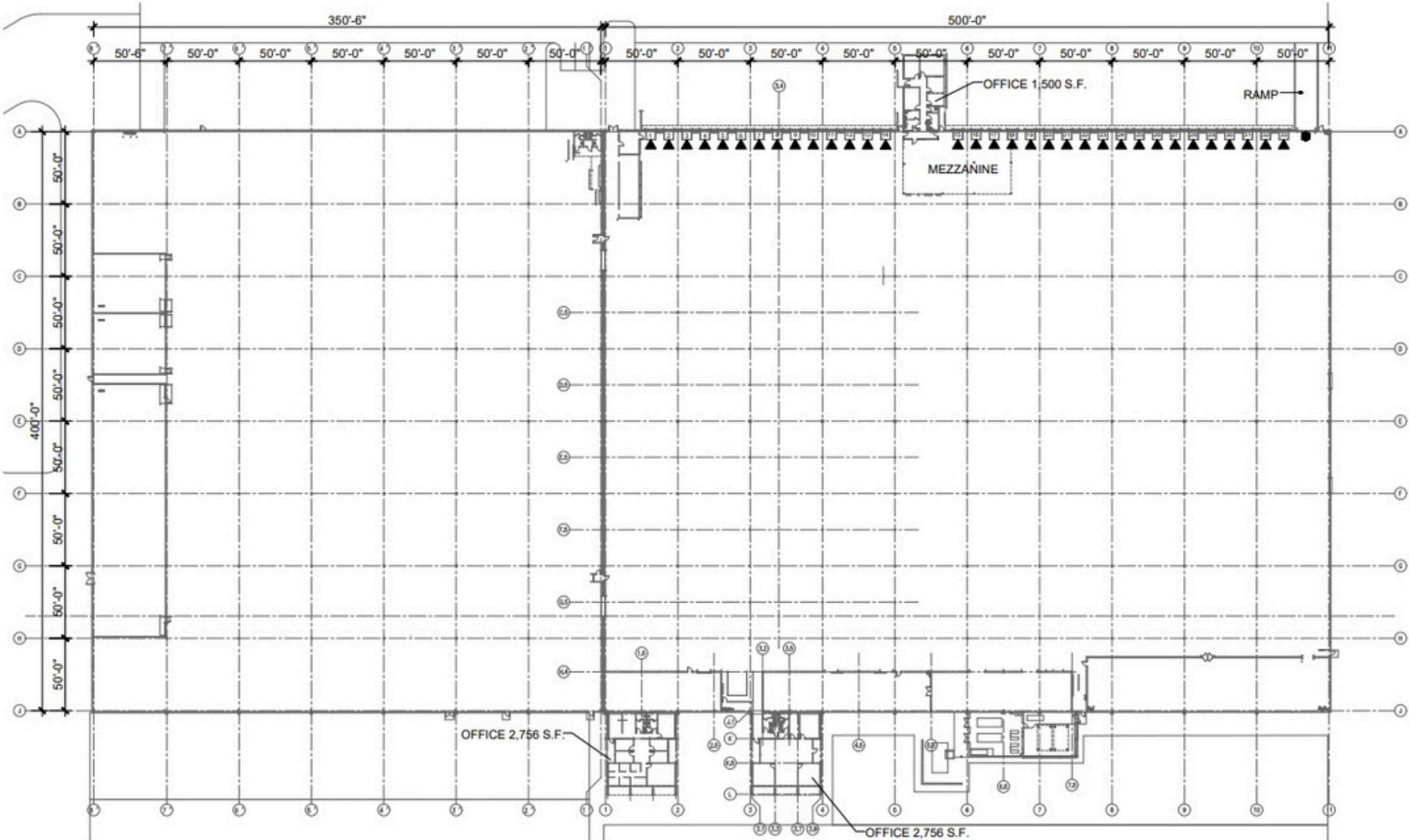
Property details

- 351,500 SF available
- 7,012 SF of office
- 28' clear height
- 33 existing dock doors
- 1 drive-in door
- 14 dock doors and 1 ramp will be added by ownership
- ± 30 off-dock trailer drop positions
- ESFR sprinkler system
- Built in 1981
- Zoning I-3, Orange County
- 11.57 acres
- Ample parking
- Available Q1 2026
- Please call for pricing

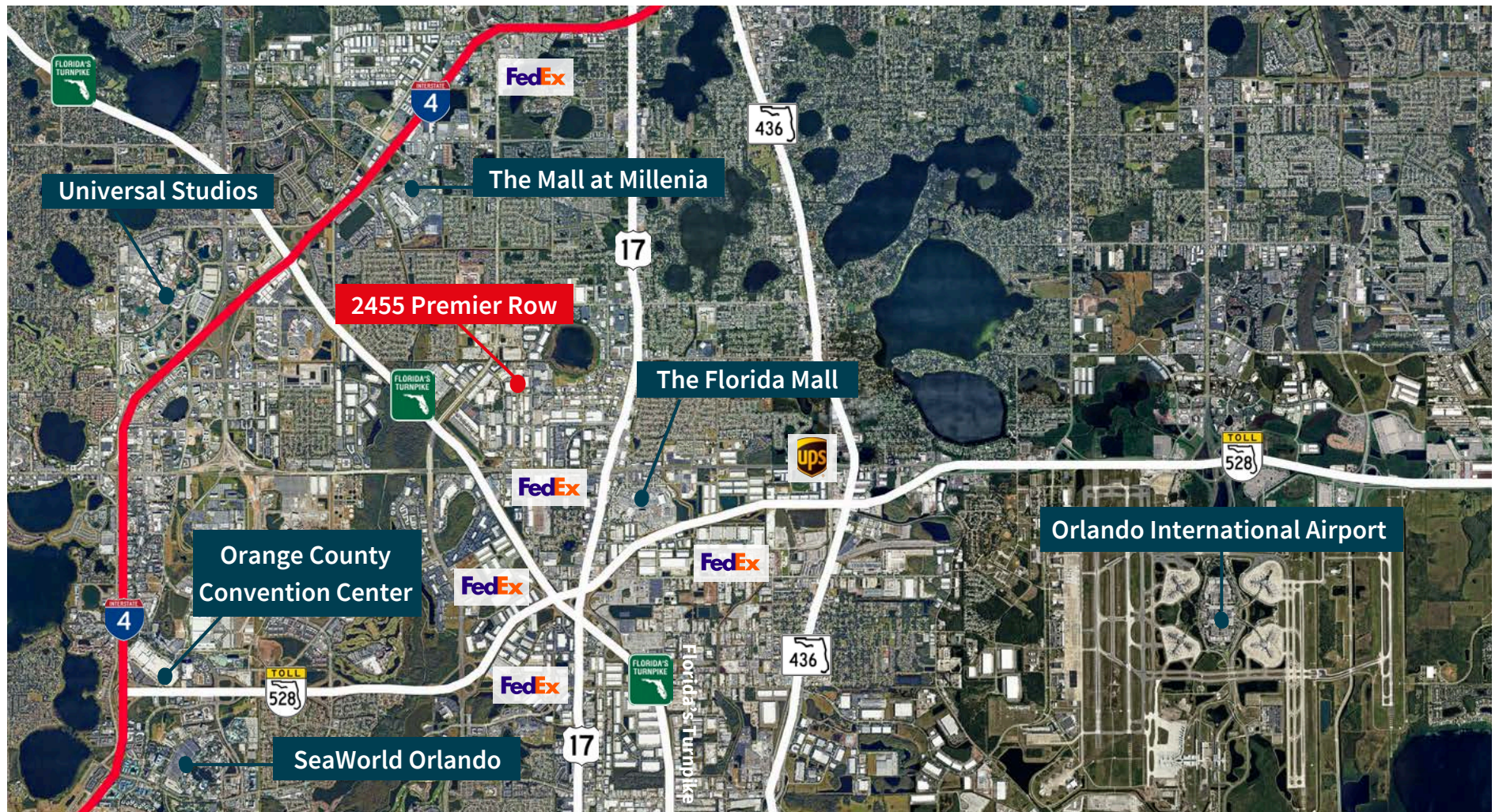


	60 min	120 min	240 min
Total population	3,782,180	10,251,041	21,669,245
Total households	1,411,726	4,096,062	8,646,606
Avg households	\$103,339	\$107,779	\$105,125
Total businesses	155,589	410,563	1,033,824
Total employees	1,679,397	4,178,948	9,448,299

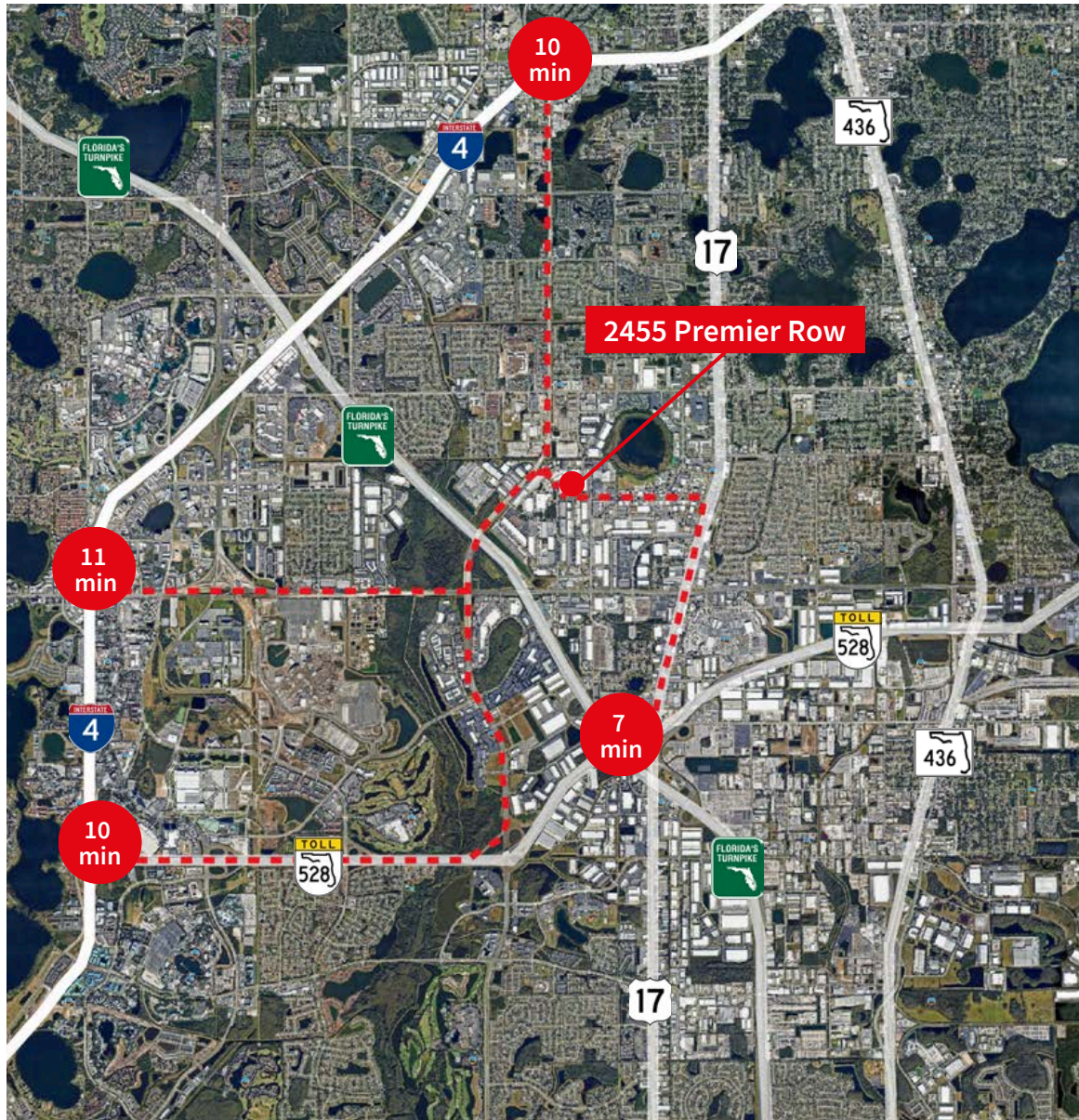
Floor plan



Amenities



Access



Drive times

- SR 429- 15.5 miles | 23 Minutes
- SunRail – Sand Lake station- 4.4 miles | 12 minutes
- Orlando International Airport- 10.2 miles | 20 minutes
- Port Canaveral- 53 miles | 57 minutes

- I-4- 3.5 miles | 10 minutes
- Florida's Turnpike- 2.3 miles | 7 minutes
- SR 528- 3.7 miles | 7 minutes
- SR 417- 13.5 miles | 20 minutes

- Tampa- 80 miles | 1 hour 17 minutes
- Jacksonville- 146 | 2 hours 13 minutes
- Miami- 226 miles | 3 hours 24 minutes
- Atlanta- 441 miles | 6 hours 19 minute

JLL**Bobby Isola, SIOR,CCIM**

Executive Managing Director

Bobby.Isola@jll.com

+1 321 239 7918

Matt Sullivan, SIOR,CCIM

Executive Managing Director

Matt.Sullivan@jll.com

+1 407 930 1802

Cameron Montgomery

Vice President

Cameron.Montgomery@jll.com

+1 407 982 8650