



# For Sublease

126 E Jefferson St | Orlando FL  
Free-standing, two story building

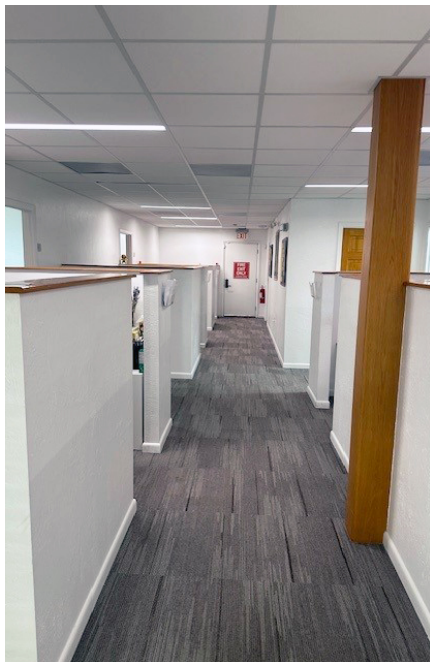
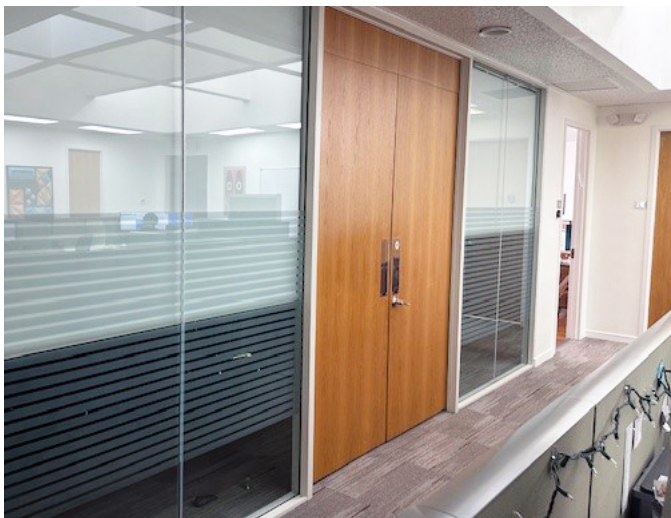
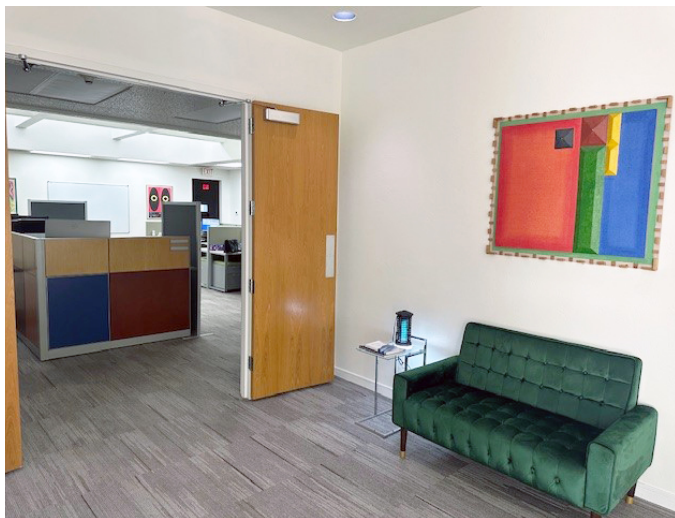
**5,821 ± RSF Available**

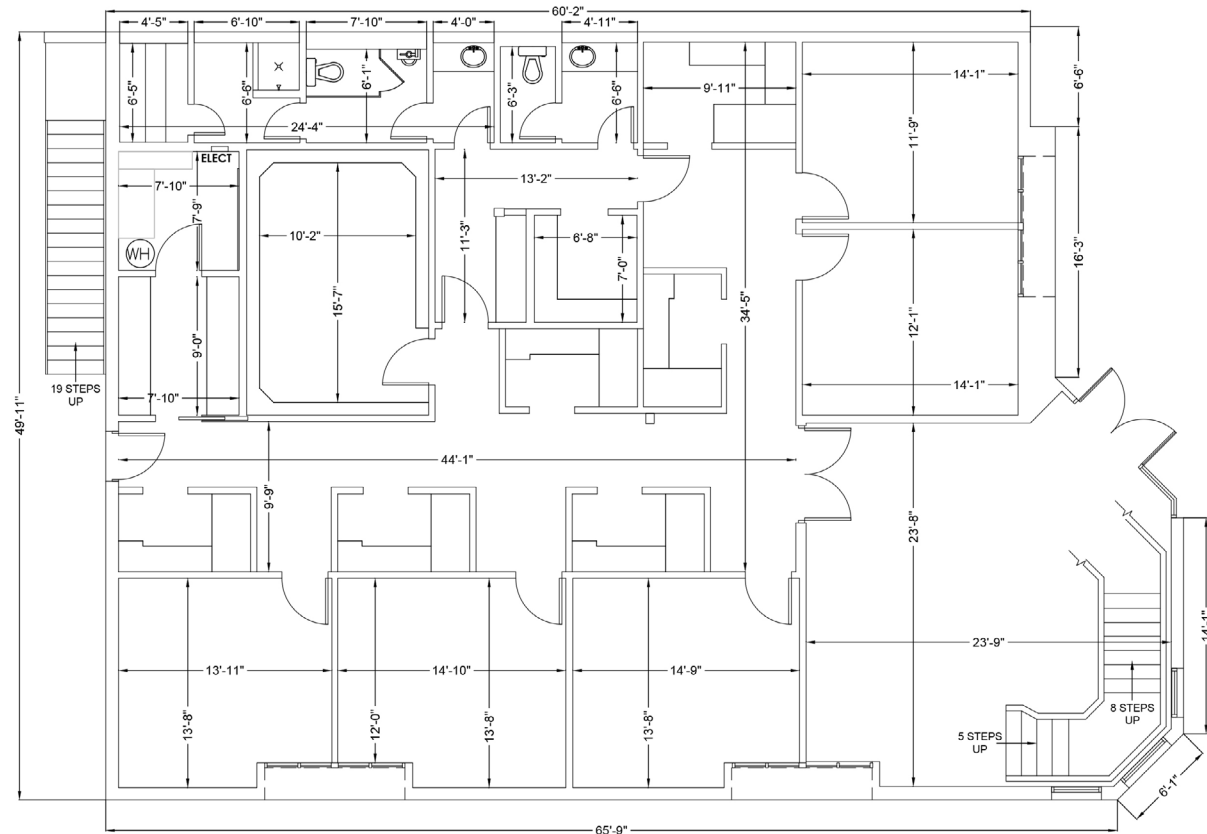
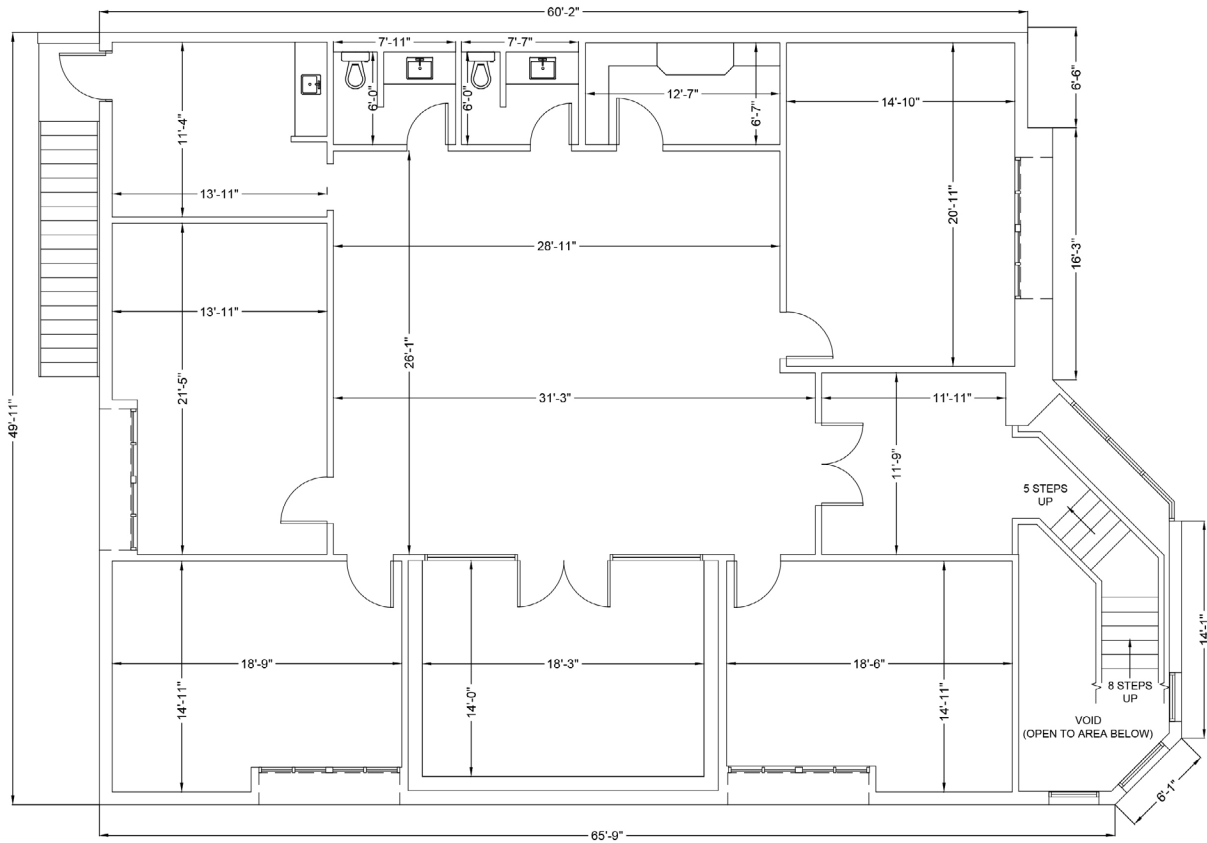
126 E Jefferson St / Orlando, FL





126 E Jefferson St / Orlando, FL









Entire building available ± 5,821 RSF



Half block from Lake Eola/Eola Park and walking distance to banking, coffee, food, and grocery



The building is conveniently situated in the heart of Downtown Orlando



Space includes grand staircase, atrium, reception, conference room, private offices, and workstations



Newly renovated with functional floor plan ideal for professional office uses



Sublease rate: \$25.00/SF MG

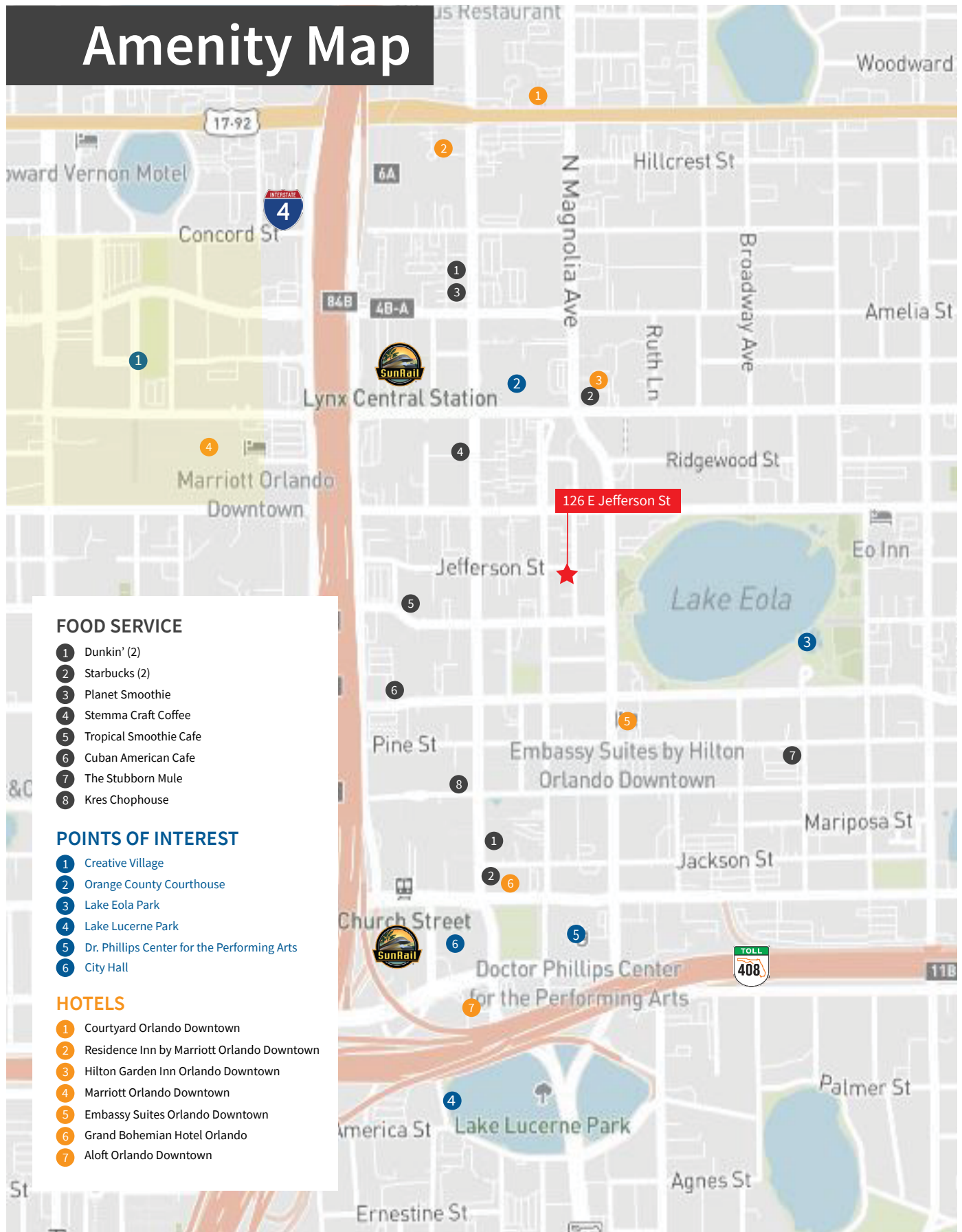


Furniture available



Sublease through July 15, 2027

# Amenity Map



**Jamie Barati**  
**Senior Vice President**  
407-930-1803  
[jamie.barati@jll.com](mailto:jamie.barati@jll.com)

**John Worrell**  
**Senior Vice President**  
321-684-9240  
[john.worrell@jll.com](mailto:john.worrell@jll.com)