



**±25,160 SF AVAILABLE FOR LEASE**

**710 S. DUPONT AVENUE, UNITS C & D | ONTARIO, CA 91761**

**DUPONT BUSINESS CENTER | MASTER PLANNED BUSINESS PARK ENVIRONMENT**





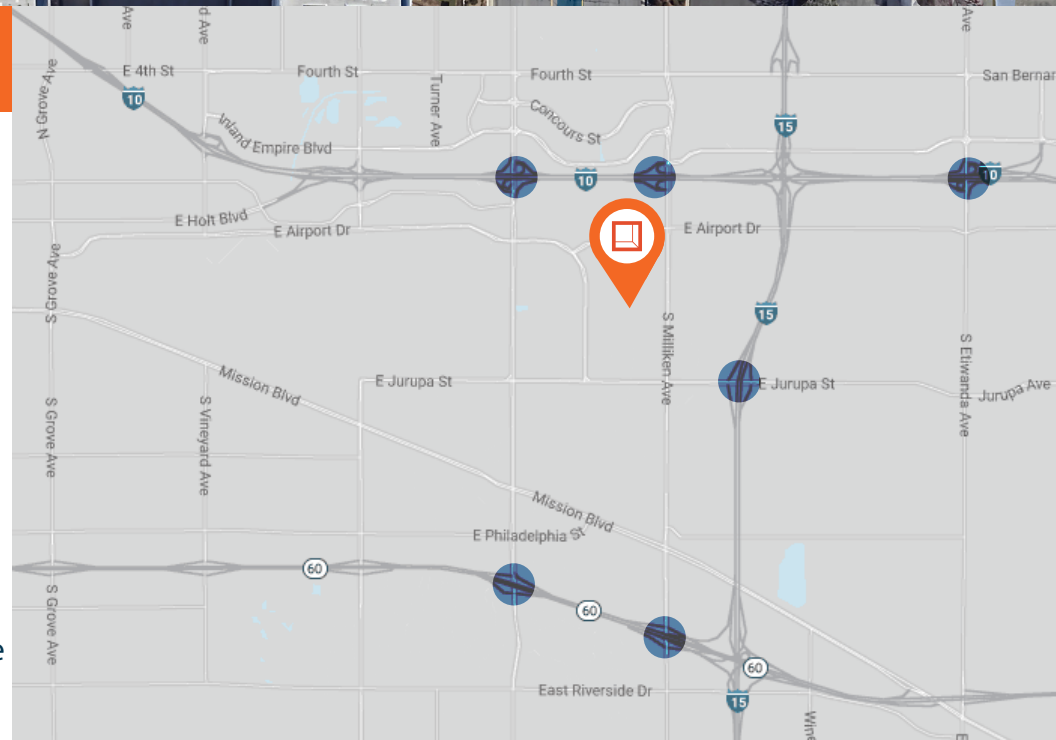
# FOR LEASE

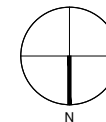
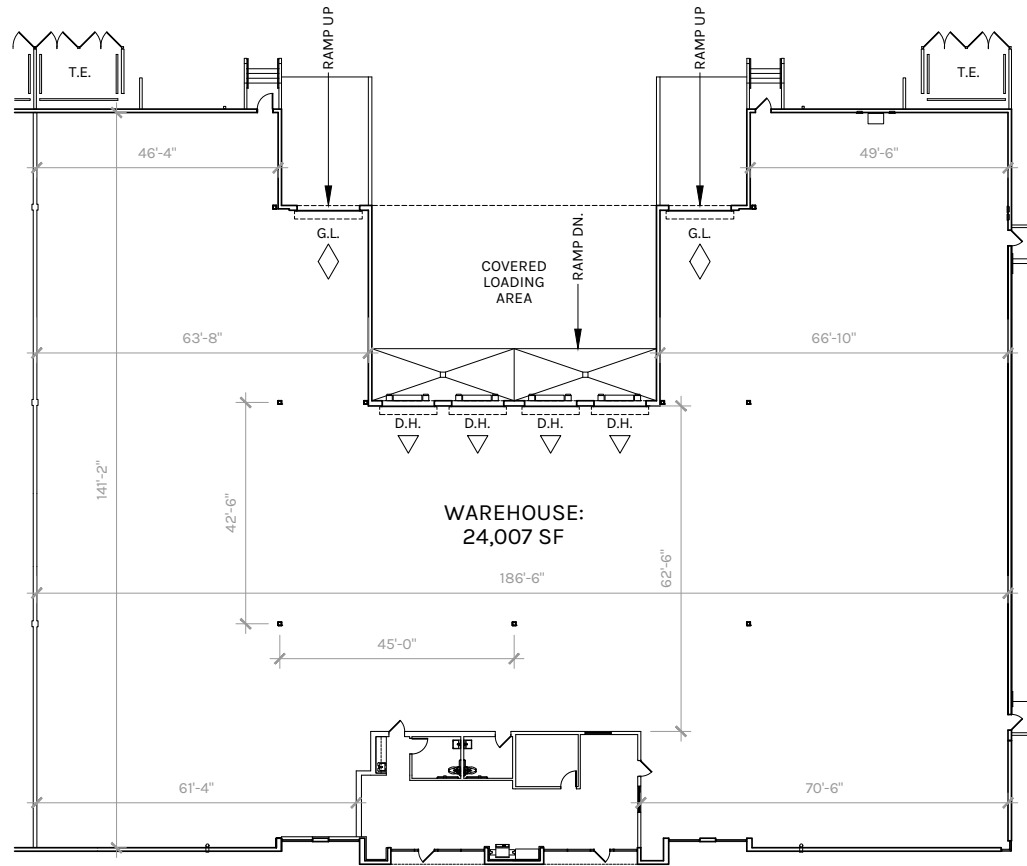
# 710 S. DUPONT AVENUE, UNITS C & D



## PROPERTY HIGHLIGHTS

- Part of a larger  $\pm 50,320$  square foot building
  - Current available units C & D:  $\pm 25,160$  SF
- 26' Minimum ceiling clearance height
- $\pm 1,153$  SF of single story offices
- ESFR fire sprinkler system
- 800 Amps, 277/480 volt, 3-phase 4 wire power (unverified)
- LED lighting
- 4 (9'x10') Dock high loading doors with edge load levelers
- 2 (12'x14') Ground level loading ramp loading door
- 187' All concrete reciprocal truck court area
- Centrally located with immediate access to the I-10, I-15 and CA-60 freeways
- Located within the California Commerce Center and Foreign Trade Zone



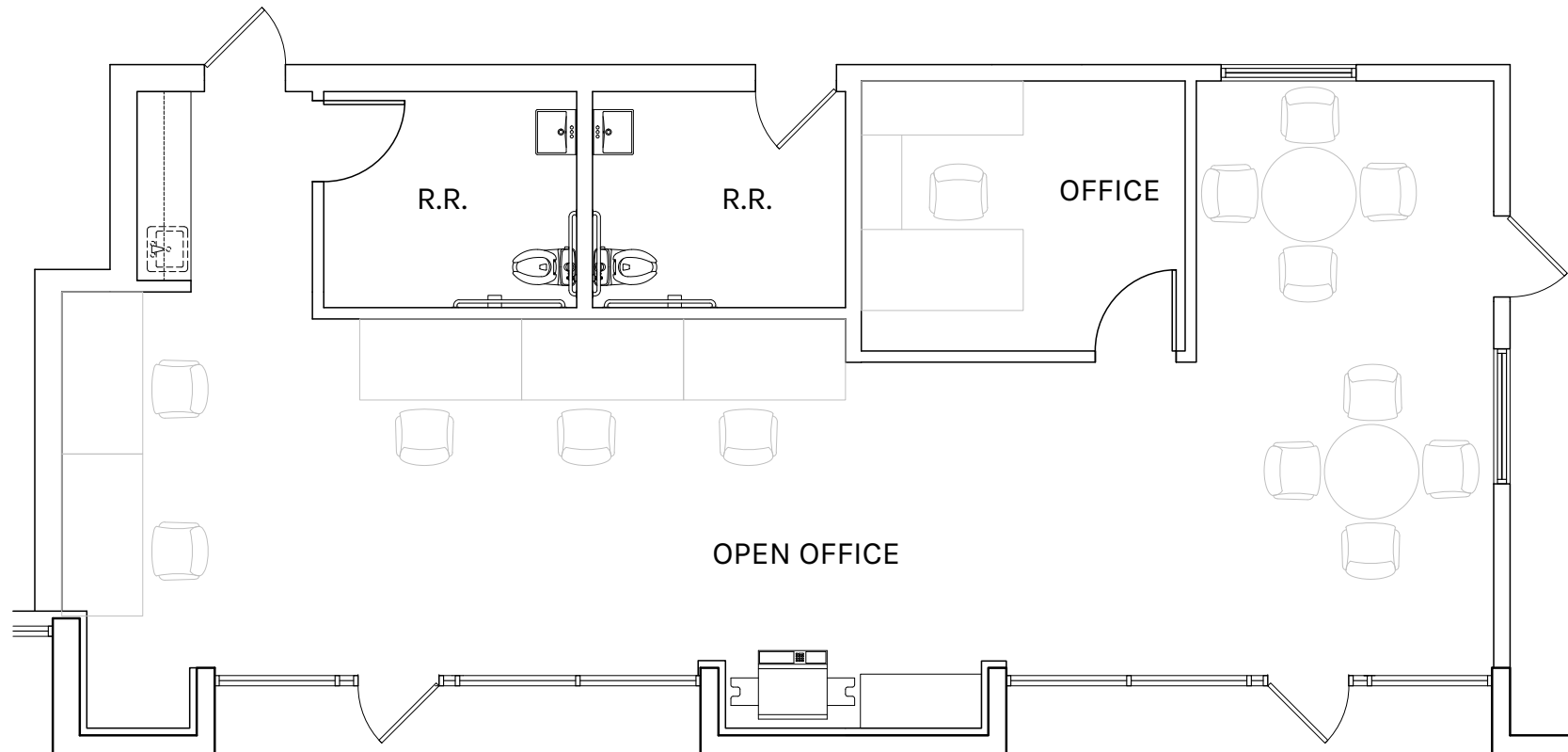


**WAREHOUSE**  
24,007 SF

**OFFICE**  
1,153 SF

**TOTAL**  
25,160 SF

PLAN LAYOUT SUBJECT TO FIELD CONDITIONS AND MAY DIFFER FROM PLAN AS SHOWN. ALL INFORMATION PRESENTED ON THIS DRAWING IS PRESUMED TO BE ACCURATE, HOWEVER TENANT SHOULD VERIFY PERTINENT INFORMATION PRIOR TO COMMITTING TO A LEASE. ANY FURNITURE OR APPLIANCES SHOWN ON PLAN ARE FOR CONCEPT ONLY AND WILL BE TENANT APPROVED.



**WAREHOUSE**  
24,007 SF

**OFFICE**  
1,153 SF

**TOTAL**  
25,160 SF

PLAN LAYOUT SUBJECT TO FIELD CONDITIONS AND MAY DIFFER FROM PLAN AS SHOWN. ALL INFORMATION PRESENTED ON THIS DRAWING IS PRESUMED TO BE ACCURATE, HOWEVER TENANT SHOULD VERIFY PERTINENT INFORMATION PRIOR TO COMMITTING TO A LEASE. ANY FURNITURE OR APPLIANCES SHOWN ON PLAN ARE FOR CONCEPT ONLY AND WILL BE TENANT APPROVED.

# LOCATION

710 S. DUPONT AVENUE, UNITS C & D



1.0 MILES  
I-10 FREEWAY

22.9 MILES  
SAN BERNARDINO AIRPORT

1.3 MILES  
I-15 FREEWAY

57.9 MILES  
PORT OF LONG BEACH

1.3 MILES  
ONTARIO AIRPORT

59.2 MILES  
PORT OF LOS ANGELES



**Rexford  
Industrial**

## LEASING CONTACTS



### **JEFF BELLITTI**

Senior Managing Director  
+1 909 467 6881  
jeff.bellitti@jll.com  
CA Lic. #01232571

### **SCOTT COYLE**

Executive Vice President  
+1 909 467 6870  
scott.coyle@jll.com  
CA Lic. #02066670

### **JAY CUCCIA**

Vice President  
+1 909 467 6911  
jay.cuccia@jll.com  
CA Lic. #02116318

Although information has been obtained from sources deemed reliable, neither Owner nor JLL makes any guarantees, warranties or representations, express or implied, as to the completeness or accuracy as to the information contained herein. Any projections, opinions, assumptions or estimates used are for example only. There may be differences between projected and actual results, and those differences may be material. The Property may be withdrawn without notice. Neither Owner nor JLL accepts any liability for any loss or damage suffered by any party resulting from reliance on this information. If the recipient of this information has signed a confidentiality agreement regarding this matter, this information is subject to the terms of that agreement. © 2024 Jones Lang LaSalle IP, Inc. All rights reserved.