



# TOWER 1201

OFFICE SPACE FOR LEASE

SEATTLE, WA  
[TOWER1201.COM](http://TOWER1201.COM)

# RISE ABOVE THE ORDINARY

Tower 1201 is more  
than a building, it's  
a statement.











Commanding a full block in the Seattle CBD, this award-winning 55-story icon is setting the new standard for modern workplaces.

Recent upgrades to the lobby levels and plaza include unique indoor/outdoor connections and enhanced security via turnstiles, exemplifying a dedication to creating a superior and safe working environment. The evolution continues with a professionally managed amenity floor set to debut in 2025, seamlessly blending work and wellness.







1,140,367 SF

Building

55

Stories

23,500 SF

Average floor plate

1/1,500 SF

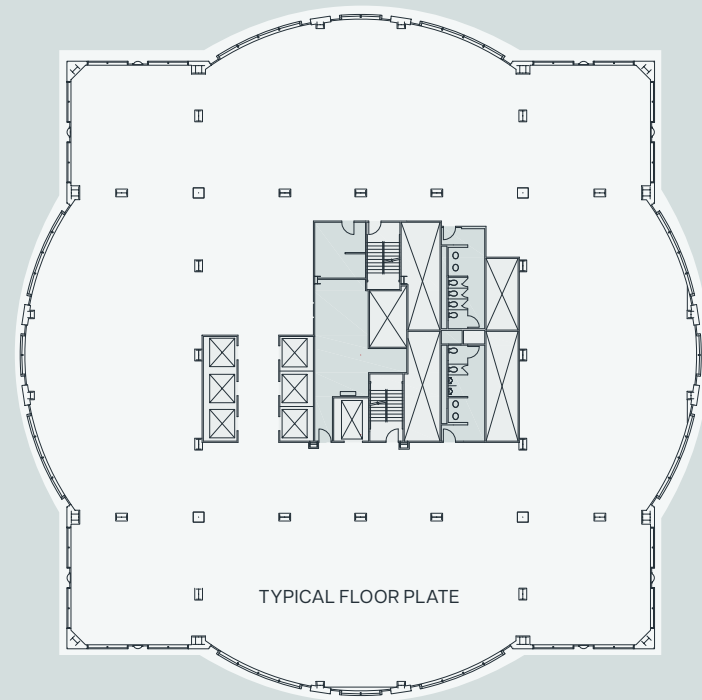
Secured on-site parking ratio

LEED

Gold

FITWEL

Certified









# RELAX, RECHARGE, REPEAT

Tower 1201 is redefining  
the workplace experience  
with our professionally  
managed amenity floor,  
**coming in 2025.**







Spaces for quiet work or  
impromptu meetings.





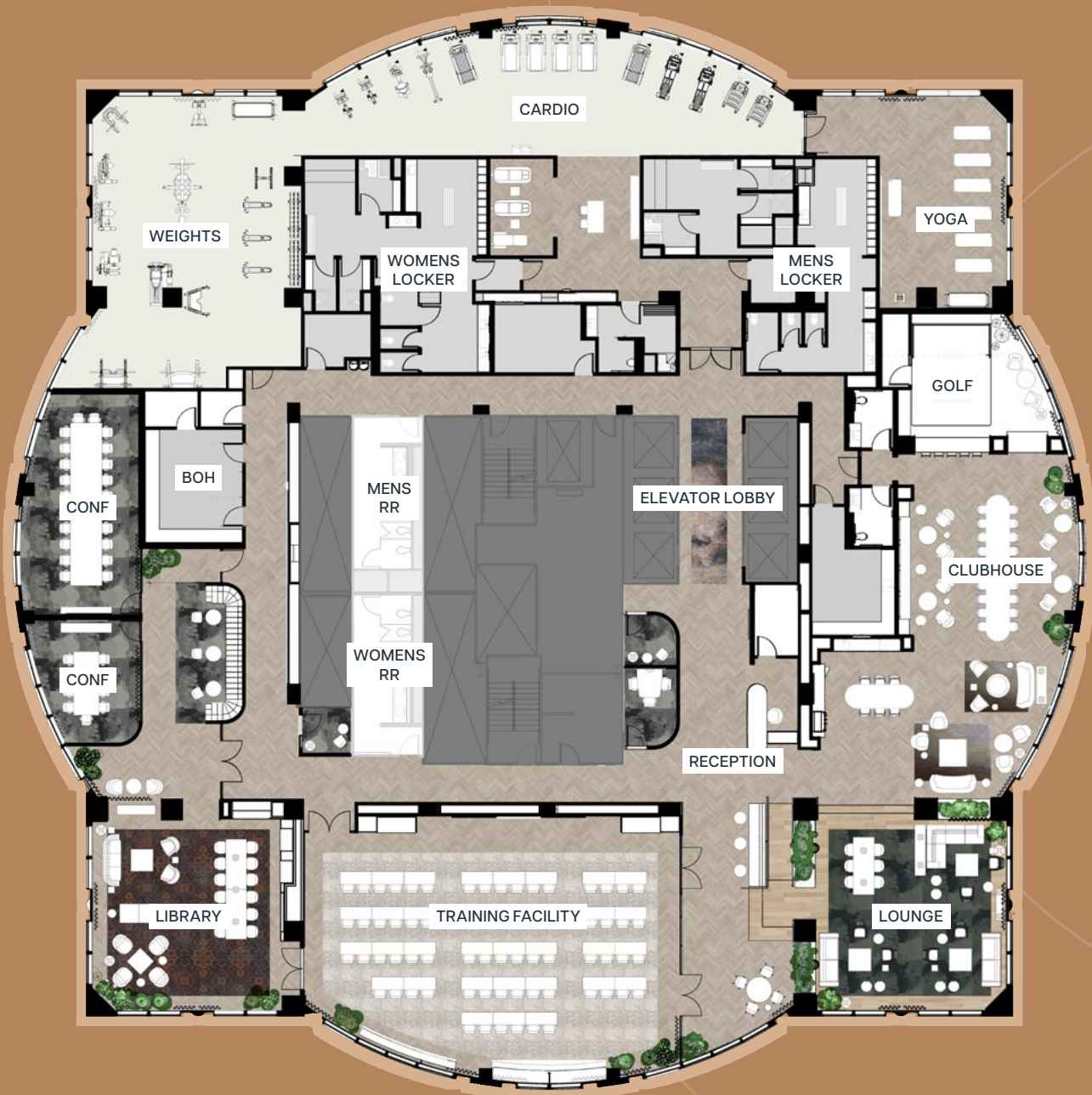
Elevate your workday  
and your workout.





Raising the bar for workplace luxury, our innovative space seamlessly blends wellness and productivity.

Featuring a spa-quality fitness center, cutting-edge conference facilities, and an exclusive staffed tenant clubhouse, we've created an environment where professional excellence meets personal well-being. From energizing workouts to high-impact meetings and relaxation, we're redefining your work-life balance.



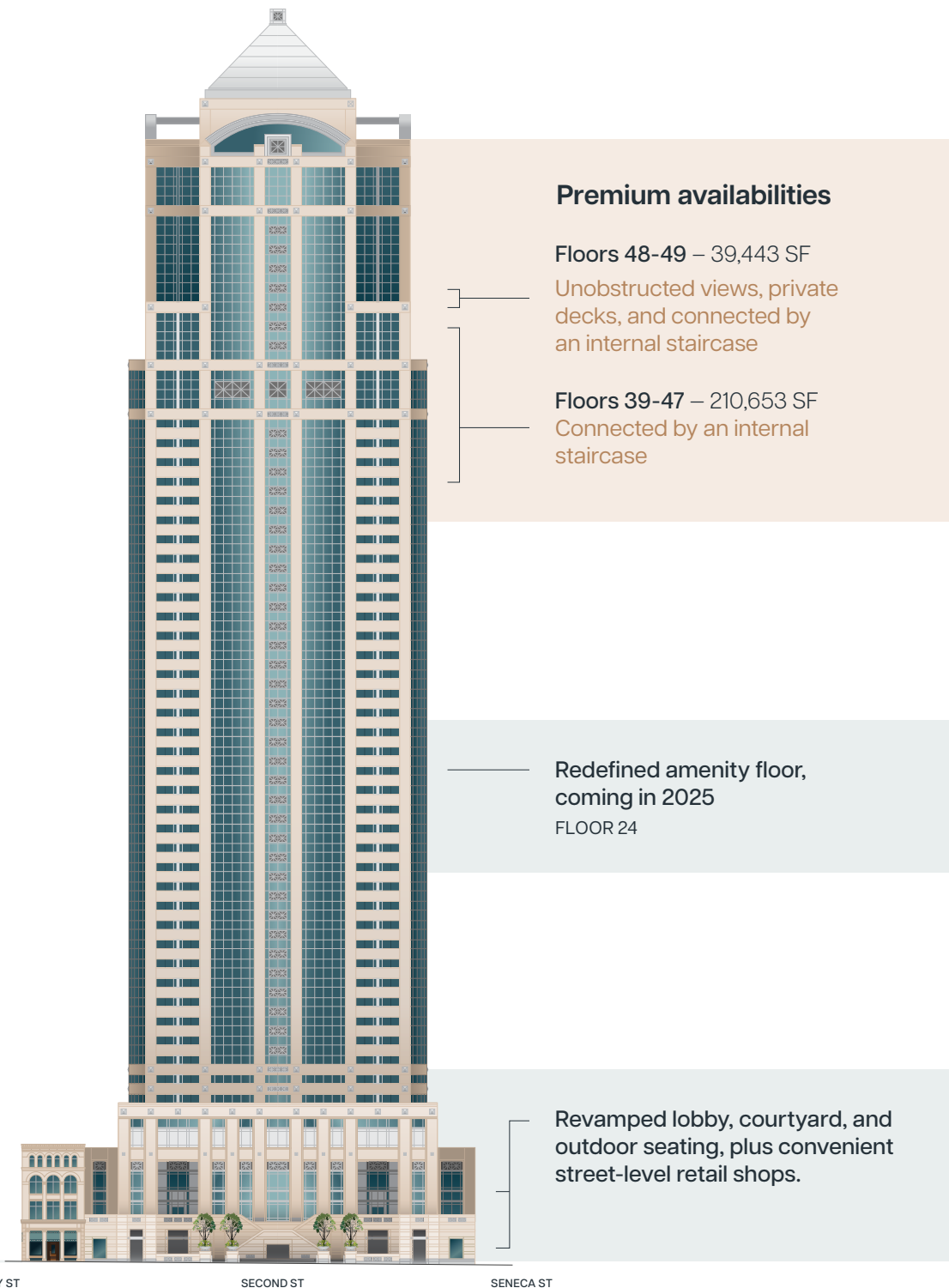




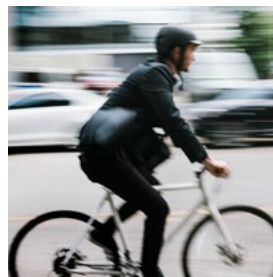


# CONQUER NEW HEIGHTS

Dominate Seattle's skyline  
from our iconic high-rise floors,  
available for the first time  
since inception. Your lasting  
statement awaits.







# A CITY BLOCK LIKE NO OTHER

Tower 1201 stands out in  
the heart of the action  
– seamlessly blending  
work life with vibrant  
experiences

With connection to Seattle's best  
new amenity - Waterfront Park,  
and Pike Place Market



Experience a workplace  
that extends beyond  
traditional office walls.

15+

Quality restaurants  
within a 5-min walk

100

Perfect  
transit score

## WATERFRONT

20+ acres of revitalized  
public space

8

Quality hotels  
nearby

## LIGHT RAIL

Direct access  
from lobby

100+

Bike storage  
with charging



**BENAROYA HALL**









**BROKER CONTACT**

**Lloyd Low**

+1 206 607 1796  
lloyd.low@jll.com

**Joe Gowan**

+1 206 607 1738  
joe.gowan@jll.com

**Bailey Aggen**

+1 206 607 1717  
bailey.aggen@jll.com



**TOWER  
1201**

**OFFICE SPACE FOR LEASE**

**SEATTLE, WA  
TOWER1201.COM**

