

COMMERCIAL POINT, OHIO

COMMERCIAL POINT

DATA CAMPUS



1.175M SF data center campus on 152 acres



PROPERTY OVERVIEW

Commercial Point Data Campus is an innovative hub designed to support high-performance AI, cloud computing, and data-driven industries. This expansive campus spans over 1.175 million SF, featuring five state-of-the-art data centers, each 220,000 SF. Powered by 1.3 gigawatt of energy from redundant hydrogen supplementation reactor natural gas turbines, the campus is built to deliver high uptime, reliability, and scalability.

TOTAL SIZE:	1,175,000 SF
DATA CENTERS:	5 (220,000 SF each)
CAMPUS AREA:	152 acres
ENERGY CAPACITY:	1.3 GW powered by redundant hydrogen supplementation reactors (natural gas → hydrogen)
FIRST AVAILABILITY:	75,000 SF data center delivering Q4 2025 with additional 100 MW of power (natural gas)

DELIVERY TIMELINE	PHASE I Q4 2025	PHASE II Q1 2026 - Q4 2028	PHASE III Q1 - Q4 2029
	<ul style="list-style-type: none">• 100 MW of negative CI score power• Completion of initial 75,000 SF data center	<ul style="list-style-type: none">• Buildout of five 220,000 SF data centers coincident with buildout of 1.3 GW of clean power	<ul style="list-style-type: none">• 450 MW of grid interconnection via AEP substation



SITE PLAN



ENERGY AND SUSTAINABILITY

HYDROGEN SUPPLEMENTATION REACTORS

NATURAL GAS → HYDROGEN

Commercial Point Data Campus will be powered by hydrogen supplementation reactor natural gas turbines, a clean and sustainable energy solution that meets U.S. EPA standards for negative CI score. This energy system delivers a minimal carbon footprint, comparable to solar power.

KEY BENEFITS:

- Negative CI score
- Very limited carbon footprint
- High efficiency, renewable energy source

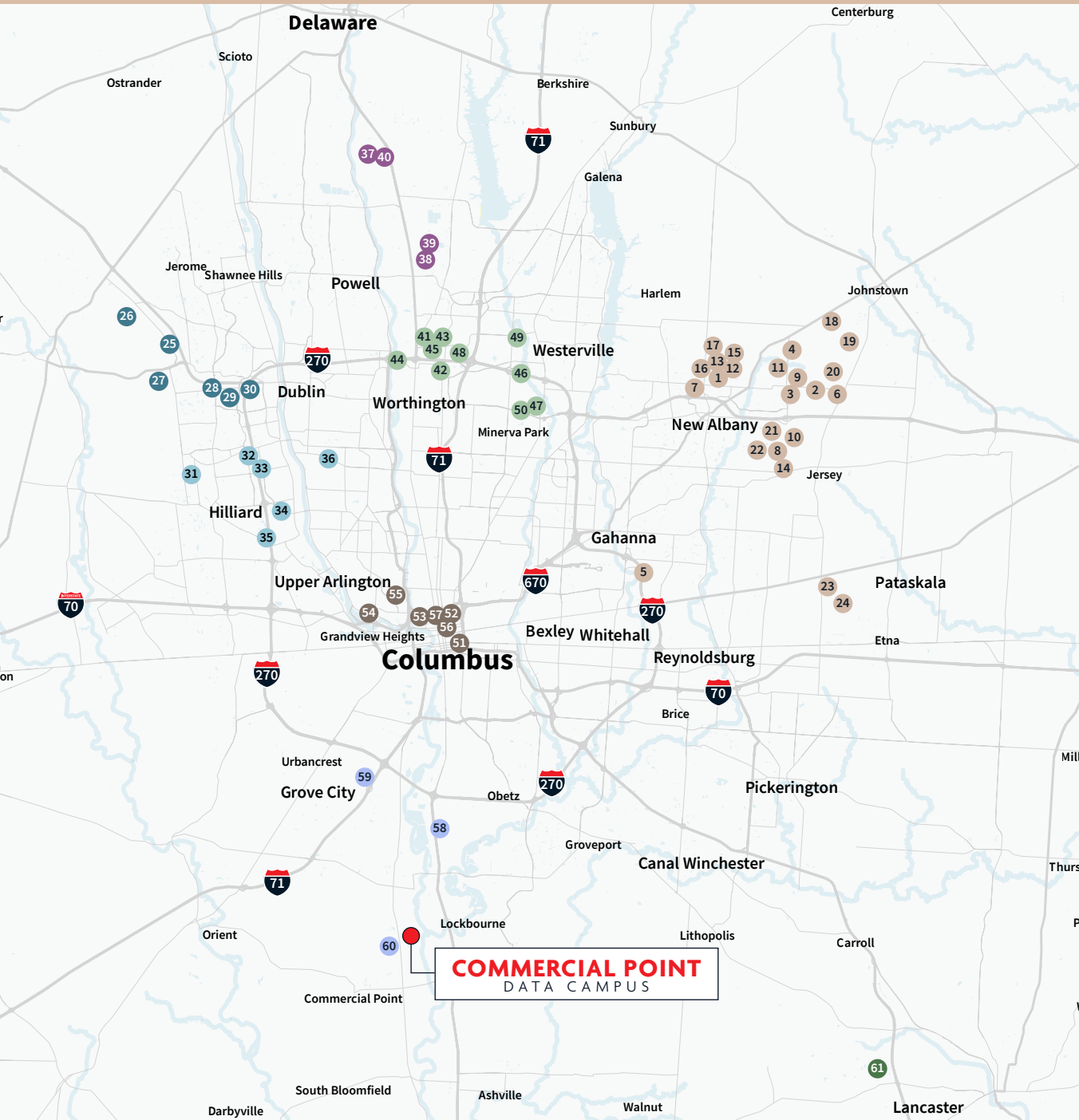
ENERGY PARTNER

- Major private experienced energy company providing 1.3 GW of natural gas and redundant systems
- Providing and maintaining the energy infrastructure
- Reliable, scalable, renewable energy solutions



CENTRAL OHIO DATA CENTERS

Commercial Point Data Campus is in good company as it joins this Midwest data center hotspot.



New Albany

- | | |
|----------------------|-------------------|
| 1. AEP/Compass | 13. PCM/ Insights |
| 2. AWS | 14. QTS |
| 3. AWS | 15. Stack |
| 4. AWS | 16. TJX |
| 5. CeraNet, Inc. | 17. Verizon |
| 6. CyrusOne | 18. Cologix |
| 7. Discover | 19. Intel |
| 8. Google | 20. EdgeConneX |
| 9. Vantage | 21. QTS |
| 10. Meta | 22. QTS |
| 11. Microsoft | 23. Microsoft |
| 12. Motorists Mutual | 24. Aligned |

Northwest

- | | |
|---------|--------------------------------|
| 25. AWS | 28. Brown Interprise Solutions |
| 26. AWS | 29. Expedient |
| 27. AWS | 30. Metro Place South |

Hilliard

- | | |
|---------|---------------|
| 31. AWS | 34. AWS |
| 32. AWS | 35. AWS |
| 33. AWS | 36. Expedient |

Lewis Center

- | | |
|-----------------|------------------|
| 37. Citibank | 40. R+L Carriers |
| 38. CL1 Cyxtera | |
| 39. Cyxtera | |

Worthington

- | | |
|---------------------------------|---------------|
| 41. AT&T | 47. eNET |
| 42. Cleverley & Associates | 48. thinkCSC |
| 43. Cologix | 49. WeConnect |
| 44. Collabera | 50. XLHost |
| 45. Corporation Service Company | |
| 46. Cott Systems | |

Downtown

- | | |
|----------------------|-----------------------|
| 51. Bresco Broadband | 55. Patrick Solutions |
| 52. Citynet Columbus | 56. Racksquared, LLC |
| 53. Cogent | 57. Zayo |
| 54. ComResource | |

South Columbus

- | | |
|------------------------------|---------|
| 58. Google | 60. AWS |
| 59. Fireproof Records Center | |

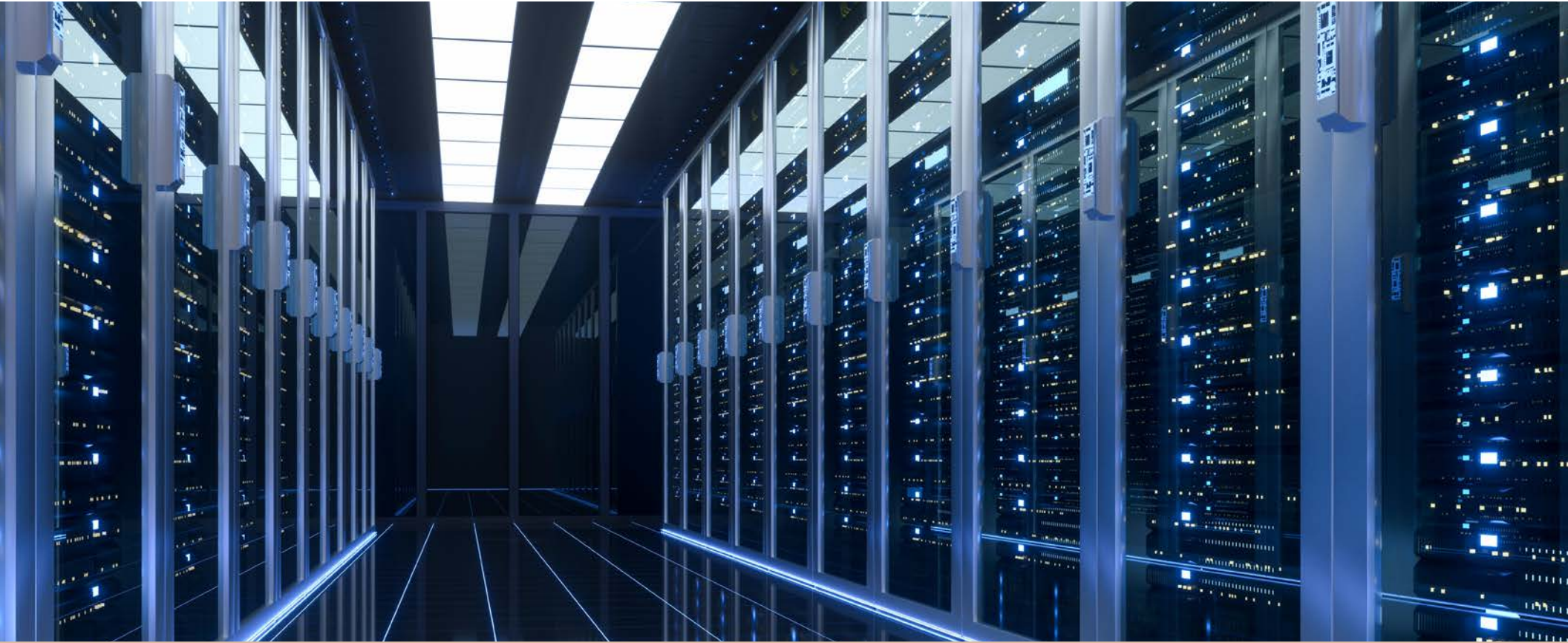
Lancaster

- | | |
|------------|--|
| 61. Google | |
|------------|--|

COMMERCIAL POINT, OHIO

COMMERCIAL POINT

DATA CAMPUS



FOR LEASING INFORMATION

JOE DAVIS

joseph.davis@jll.com
+1 614 460 4425

JOSH WEITHMAN

josh.weithman@jll.com
+1 614 460 4410

BRIAN MARSH

brian.marsh@jll.com
+1 614 460 4421



Although information has been obtained from sources deemed reliable, neither Owner nor JLL makes any guarantees, warranties or representations, express or implied, as to the completeness or accuracy as to the information contained herein. Any projections, opinions, assumptions or estimates used are for example only. There may be differences between projected and actual results, and those differences may be material. The Property may be withdrawn without notice. Neither Owner nor JLL accepts any liability for any loss or damage suffered by any party resulting from reliance on this information. If the recipient of this information has signed a confidentiality agreement regarding this matter, this information is subject to the terms of that agreement. ©2025, Jones Lang LaSalle IP, Inc. All rights reserved.