

470 Park Avenue South

Midtown East/Murray Hill, New York
Retail Space for Sublease

Southwest Corner of East 32nd Street

Premises	Size	Status	Term	Possession
Ground Floor	3,074 sf	Vacant;	Sublease	Immediate
Mezzanine	948 sf	Formerly	through	
Lower Level	2,800 sf	Capital One	9/30/2029	

Comments

- At the base of a 300,000 sf premier pre-war office building
- Possible direct deal with landlord
- Retail adjacent to the 33rd Street subway entrance, servicing 5.7M passengers annually **6**

Neighbors

- Equinox
- Sweetgreen
- Juice Generation
- Chipotle
- Chick Fil A
- M&T Bank
- Pret a Manger
- Wolfgang's Steakhouse



Jesse Wolff

+1 212 271 6393

jesse.wolff@jll.com

Patrick A. Smith

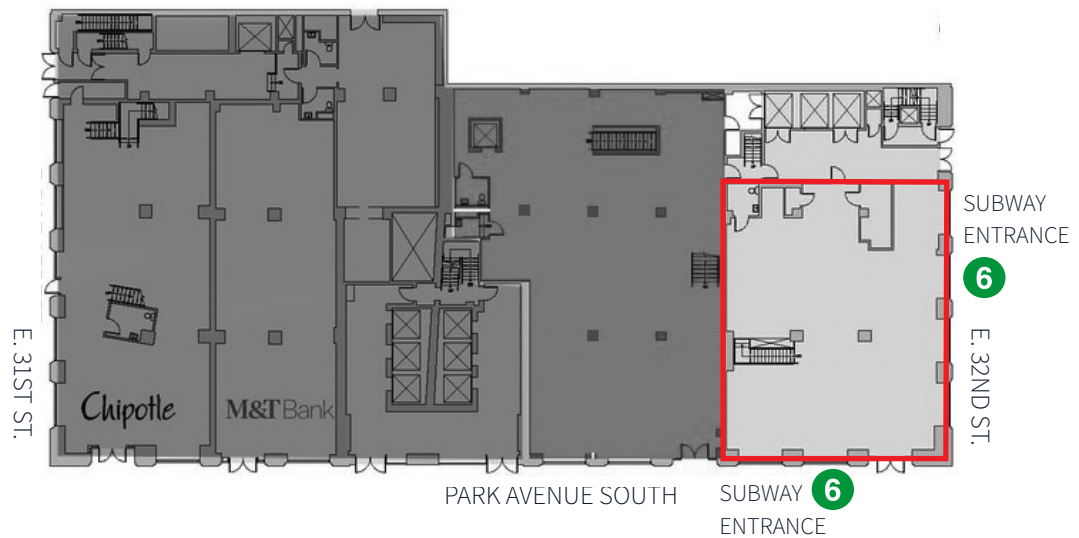
+1 212 812 5888

patrickA.smith@jll.com

Ground Floor

3,074 sf

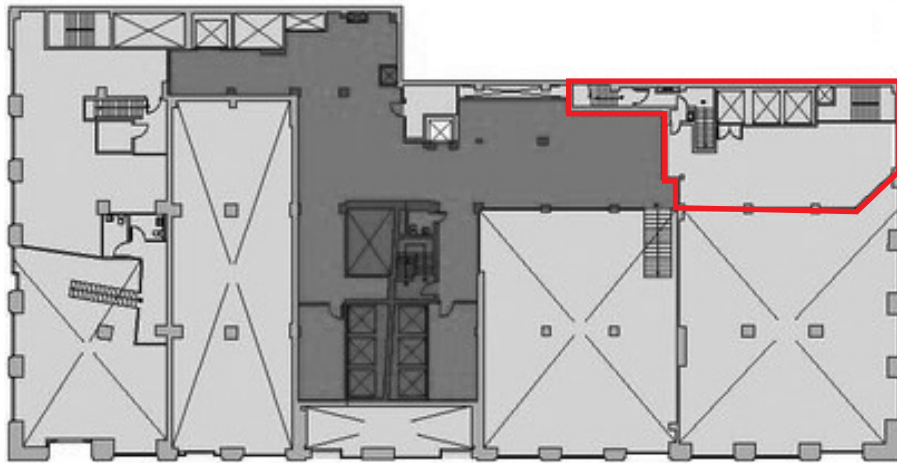
18'9" ceiling



Mezzanine

948 sf

8'9" ceiling



Lower Level

2,800 sf

