

11754

SAN VICENTE BLVD.
BRENTWOOD, CA

PLANTA

PRIME
2ND GENERATION
RESTAURANT
OPPORTUNITY



THE PROPERTY

3,411 SF & 705 SF MEZZANINE
AVAILABLE

Prime retail and restaurant opportunities in one of the most desirable and affluent neighborhoods of Los Angeles. Nearby tenants include: Alfred Coffee, Soul Cycle, Katsuya, Pop's Bagels, Matu, Pizzana, Baltaire, Orangetheory Fitness, Great White, Bluemercury, Sweetgreen, Whole Foods, Susie Cakes, Milk & Honey, Jon & Vinny's and Joe & The Juice.

- Rent available upon request

Parking: 27 Dedicated onsite parking stalls, attendant for adjacent lot & metered street parking available.

30,000+ CPD
on San Vicente Boulevard

91
Walk Score at Location





THE LOCATION

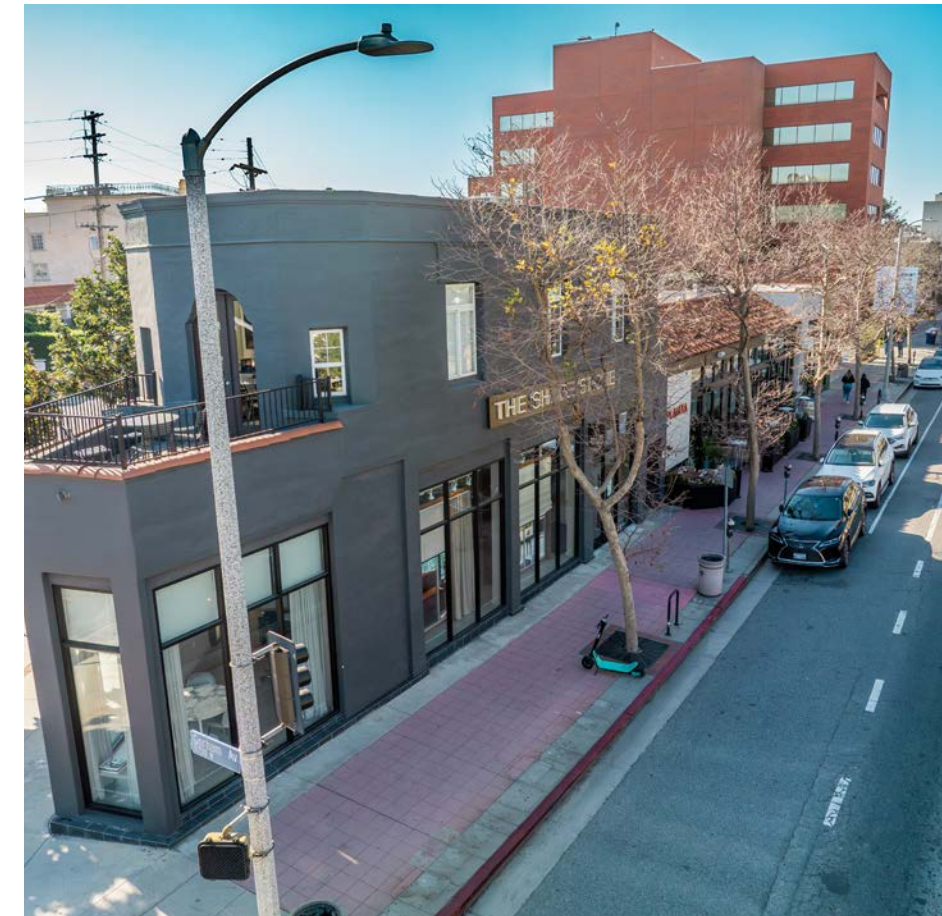
11754

SAN VICENTE BLVD.
BRENTWOOD, CA

Demographics

Est. Pop	143,448
Employees Pop	144,067
Average HH Income	\$201,973
Median Home Value	\$1.68 M
Total HH Expenditure	\$7.52B
Graduate Degree	32.8%
Estimated Households	58,969

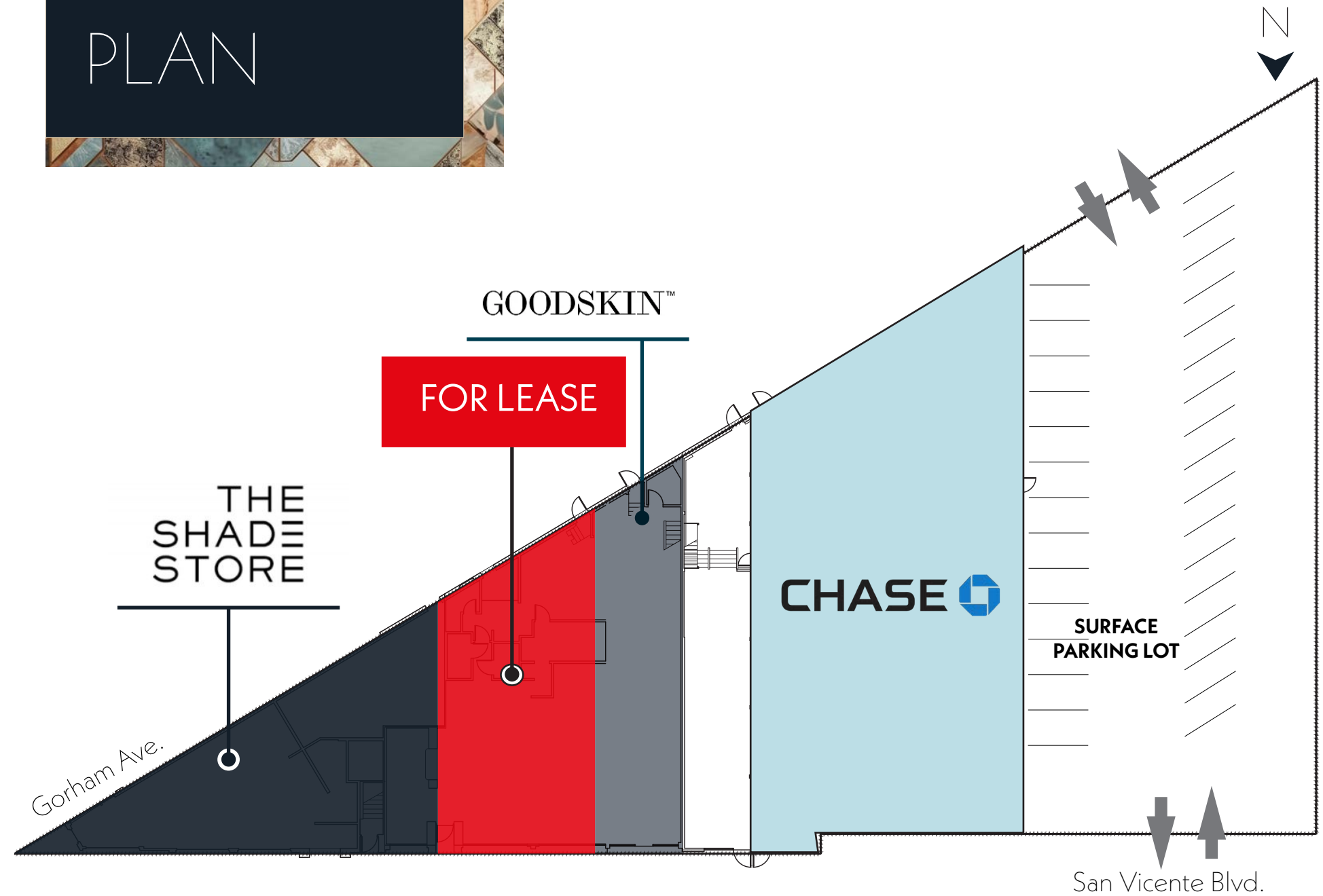
Source: Sites USA, generated for demos within 2 radius miles



NEIGHBORING TENANTS



PREMIER BRENTWOOD RESTAURANT LOCATION



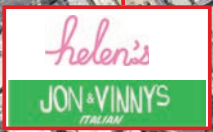
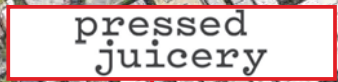
NEARBY AMENITIES

11754
SAN VICENTE BLVD.
BRENTWOOD, CA



BRENTWOOD COUNTRY CLUB

SAN VICENTE BLVD



Market Overview

Brentwood is a quiet, affluent neighborhood on the Westside, located between Westwood and Santa Monica. Tree-lined streets with well-tended homes in a range of architectural styles stretch up into the hills. The main artery, San Vicente Boulevard, features classy Italian eateries and warm cafes, plus the historic Brentwood County Mart, a family-friendly retail hub. San Vicente Blvd. enjoys a busy pedestrian scene with a walk score of 91. The striking Getty Center museum boasts a world-class art collection and expansive city views.



11754
SAN VICENTE BLVD.
BRENTWOOD, CA

FOR MORE INFORMATION, PLEASE CONTACT:

BLAKE KAPLAN

Managing Director
LICENSE # 02001158
TEL: 909 702 3367
Blake.Kaplan@jll.com

DREW OLSON

Vice President
LICENSE # 02051219
TEL: 949 870 0565
Drew.Olson@jll.com



Jones Lang LaSalle Brokerage, Inc. License #01856260. ©2025 Jones Lang LaSalle IP, Inc.
All rights reserved. All information contained herein is from sources deemed reliable; however,
no representation or warranty is made to the accuracy thereof.