

991 Third Avenue

Midtown East, New York
Retail Space for Sublease

Northeast Corner of 59th Street

Premises	Size	Status	Term	Possession
Ground Floor	1,600 sf	Vacant;	Sublease	Immediate
Second Floor	1,600 sf	Formerly	through	
Third Floor	1,600 sf	Capital One	3/31/2031	
Lower Level	1,600 sf			

Comments

- Billboard signage directly across the street from Bloomingdales
- Possible direct deal with landlord
- Retail adjacent to the 59th Street subway entrance, servicing 11.6M passengers annually **N Q R 4 5 6**

Neighbors

- Bloomingdale's
- Home Depot
- Clarks
- CB2
- Citibank
- Wells Fargo
- Tempur-Pedic
- Cinema 1,2, & 3



Jesse Wolff

+1 212 271 6393

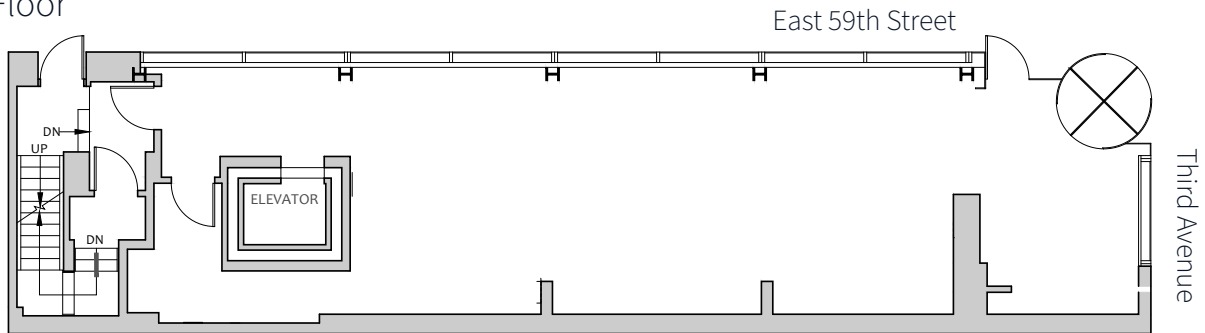
jesse.wolff@jll.com

Patrick A. Smith

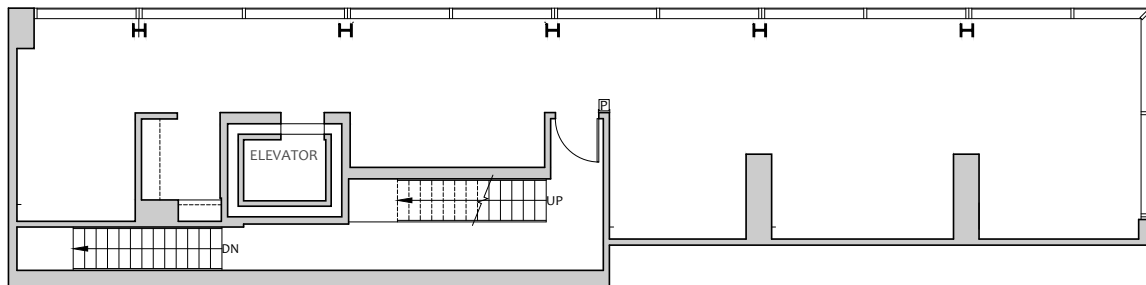
+1 212 812 5888

patrickA.smith@jll.com

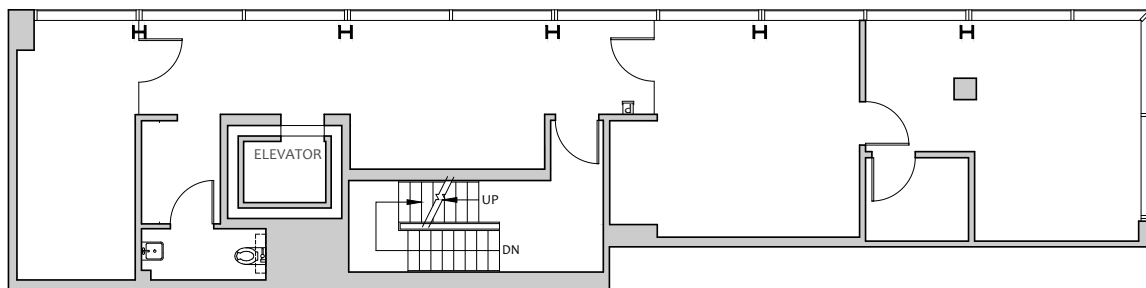
Ground Floor



Second Floor



Third Floor



Lower Level

