



For sale or lease

Office/Medical space
40,000 SF available



1840 N. Meridian Street, Indianapolis, IN 46202

Property highlights

- Class A office/medical space
- Located in the Meridian Corridor and sits on the Indiana University Health Campus
- Four parking spaces for every 1,000 SF
- Close proximity to downtown Indianapolis
- Convenient access to Interstate 65
- Adjacent to the red-line bus stop
- (+/-) 18,000 VPD

James Gruesser

Vice President
james.gruesser@jll.com
+1 317 414 0313

Connor Scott

Vice President
connor.scott@jll.com
+1 317 810 6399

[jll.com](https://www.jll.com)

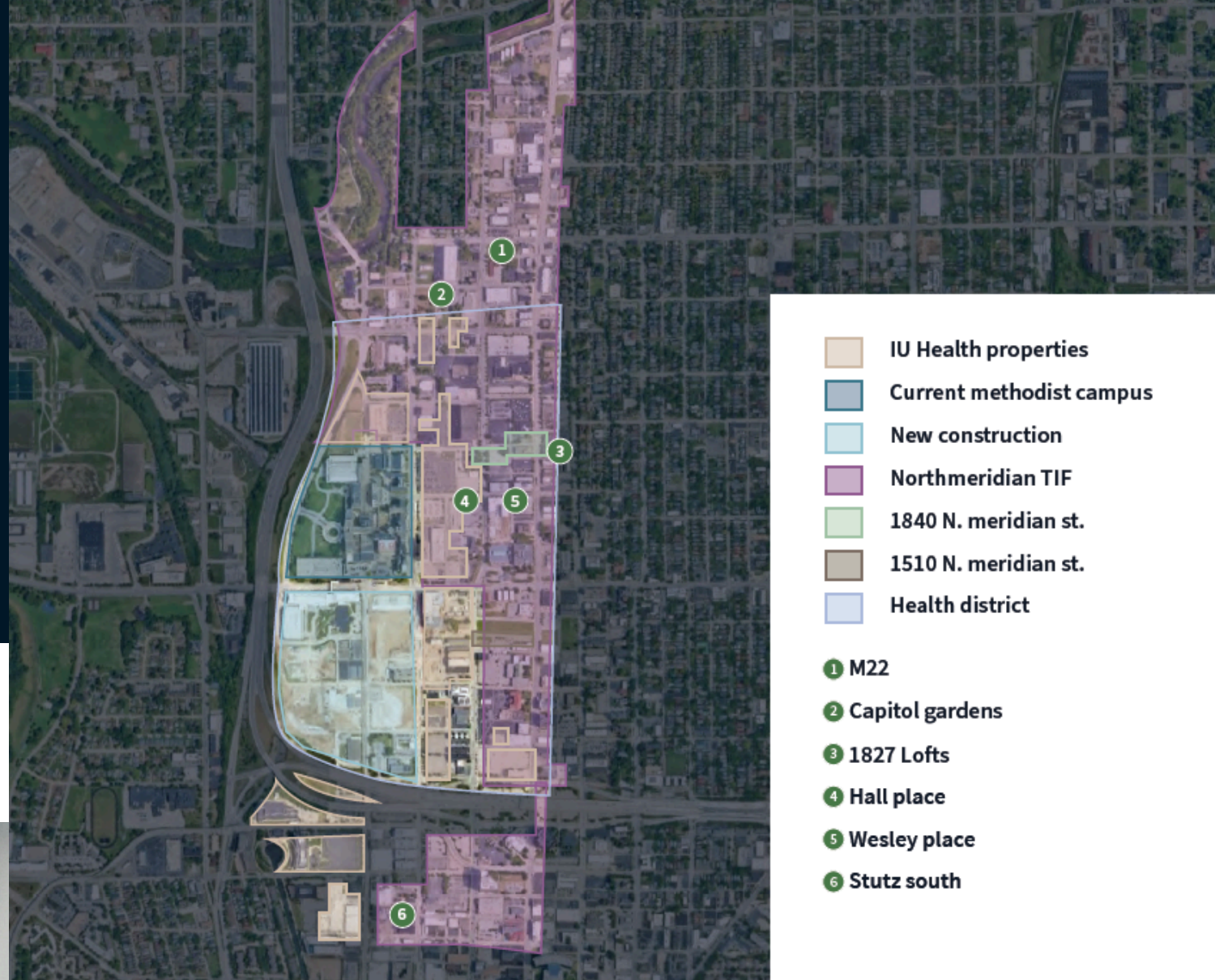
Jones Lang LaSalle Brokerage, Inc., a licensed real estate broker



40,000 SF available
Office/Medical space

Click [HERE](#) for additional photos

Click [HERE](#) for floor/site plans



Although information has been obtained from sources deemed reliable, neither Owner nor JLL makes any guarantees, warranties or representations, express or implied, as to the completeness or accuracy as to the information contained herein. Any projections, opinions, assumptions or estimates used are for example only. There may be differences between projected and actual results, and those differences may be material. The Property may be withdrawn without notice. Neither Owner nor JLL accepts any liability for any loss or damage suffered by any party resulting from reliance on this information. If the recipient of this information has signed a confidentiality agreement regarding this matter, this information is subject to the terms of that agreement. © 2025. Jones Lang LaSalle IP, Inc. All rights reserved.