

# For sale

NWC of E Terra Cotta Avenue and  
Valley View Road, Prairie Grove, Illinois



**Kate Coxworth**  
Managing Director  
Kate.Coxworth@jll.com  
+1 312 450 5655



# Land site adjacent to high power substation

**+/- 95 acres available immediately**



## Size

+/- 95 acres



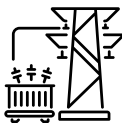
## Pins

14-35-200-004; 14-35-200-005;  
14-35-100-009



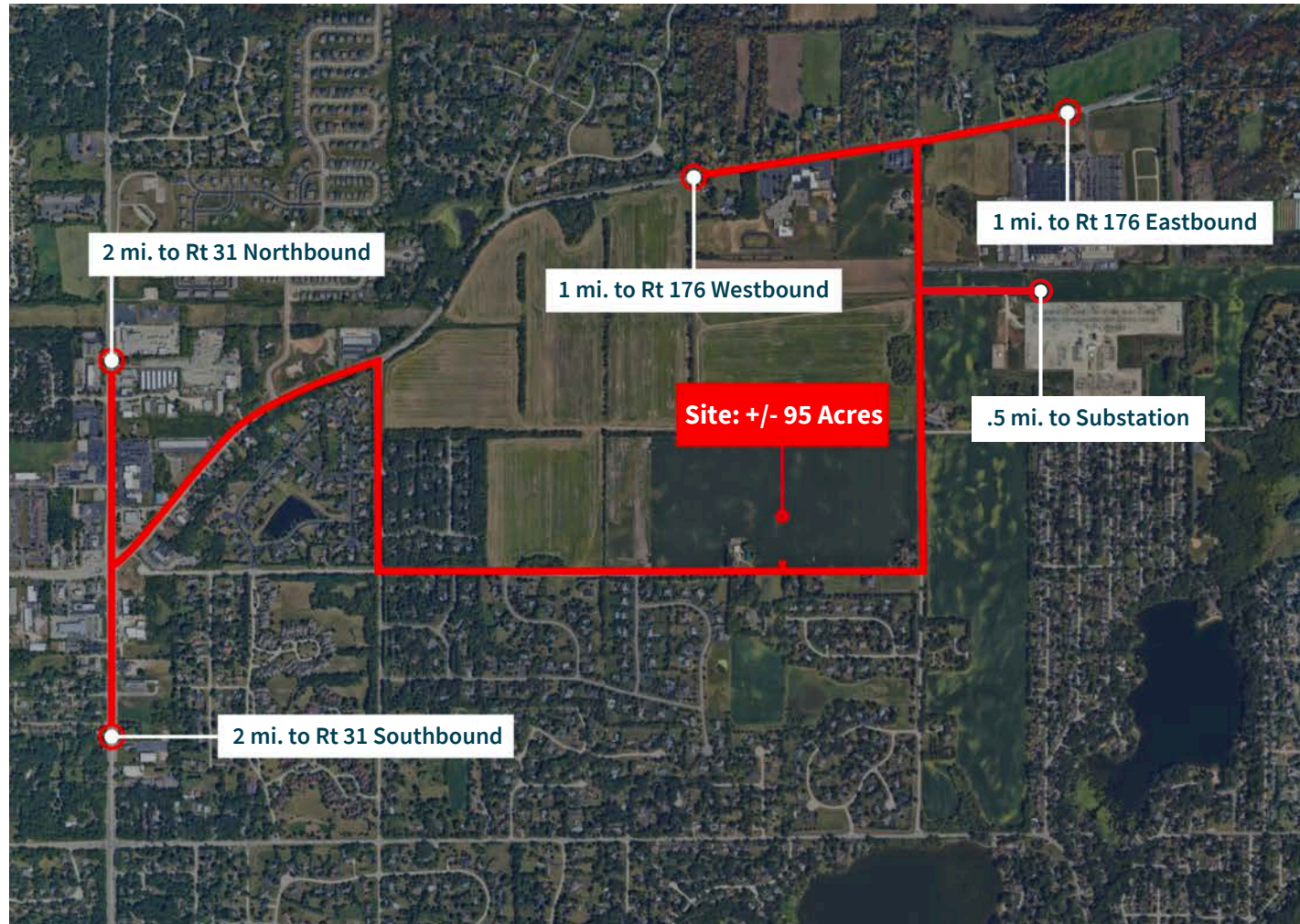
## Location

NWC of E Terra Cotta Avenue  
and Valley View Road  
Prairie Grove, Illinois



## Substation

138kV and 345kV service lines



Strategically located in Prairie Grove, Illinois, this fully buildable 95-acre parcel offers prime development potential with adjacent substation access, nearby utilities, and no wetland constraints.

## Property Highlights

- Utilities close by
- Fully buildable site

## Kate Coxworth

Managing Director  
Kate.Coxworth@jll.com  
+1 312 450 5655

