



## 101 BOREN

101 BOREN AVE N  
SEATTLE · 98109

### AN EXCITING OPPORTUNITY IN SOUTH LAKE UNION'S PREMIER LOCATION

The building features a remodeled lobby and conference room, open, efficient office space with exposed ceilings, a perfect transit score, and access to parking within Onni SLU, just across the street.

#### FEATURES

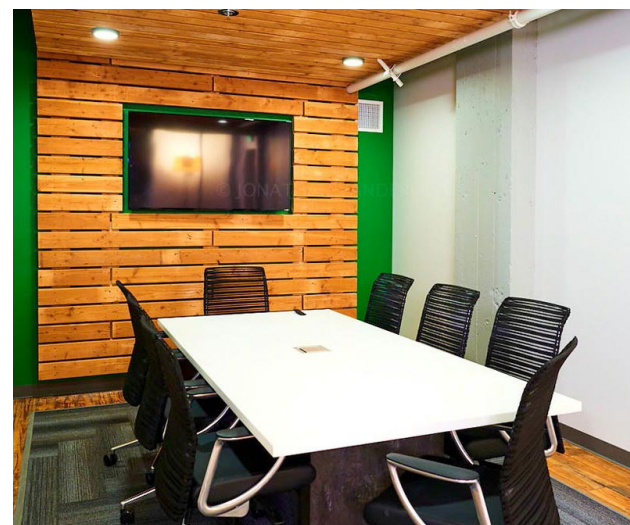
- | Remodeled lobby & conference room
- | Prime location with abundant amenities
- | Just steps to Onni Park and Denny Park
- | Access to parking in the Onni garage
- | Easy fiber connectivity



264,687  
SQ FEET



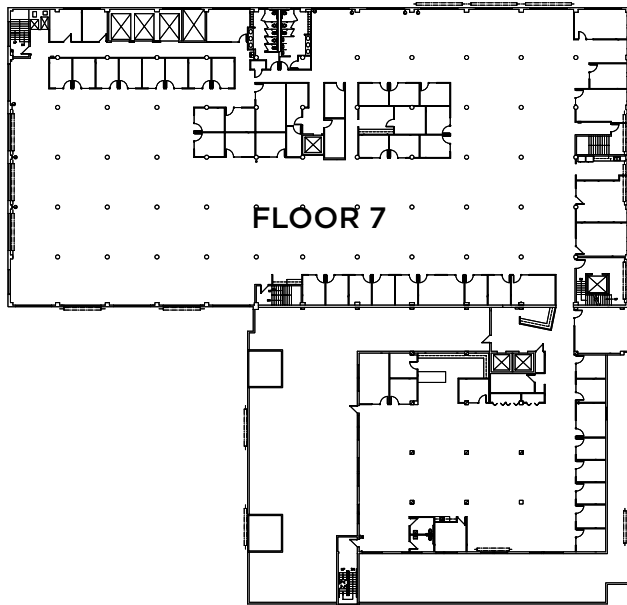
EIGHT  
STORIES





## TYPICAL FLOOR PLAN

- | Open, tech-friendly work space
- | Tall, exposed ceilings
- | Expansive floor plates



## CONTACT

Lisa Stewart

+1 206 607 1786

[lisa.stewart@jll.com](mailto:lisa.stewart@jll.com)

Joe Gowan

+1 206 607 1738

[joe.gowan@jll.com](mailto:joe.gowan@jll.com)

Charlotte Evans

+1 206 607 1720

[charlotte.evans@jll.com](mailto:charlotte.evans@jll.com)



DISCLAIMER © 2024 Jones Lang LaSalle IP, Inc. All rights reserved. All information contained herein is from sources deemed reliable; however, no representation or warranty is made to the accuracy thereof. Jones Lang LaSalle Brokerage, Inc.



Bus stop



Streetcar line

A perfect transit score

100

TRANSIT  
SCORE

99

WALK  
SCORE