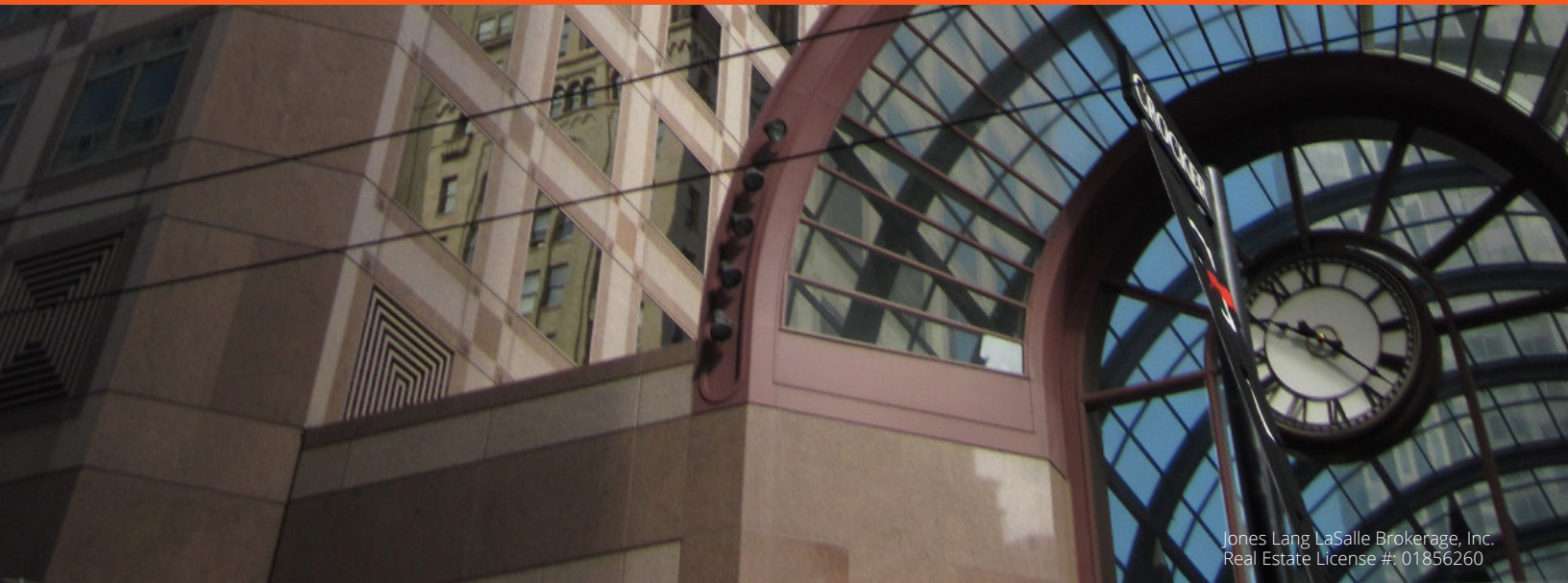
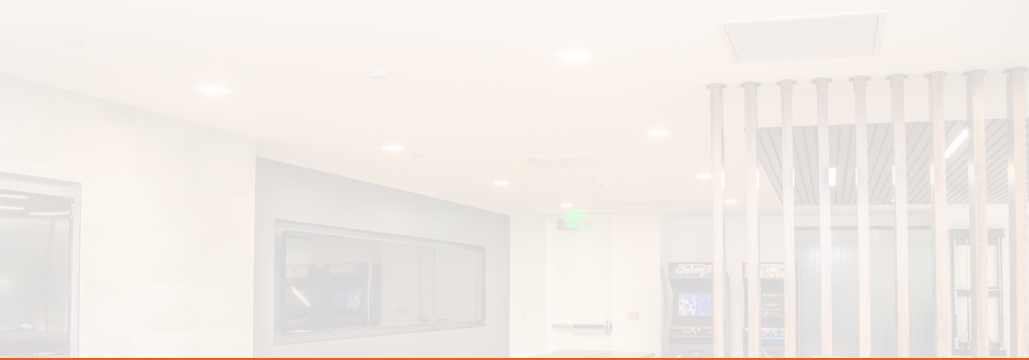
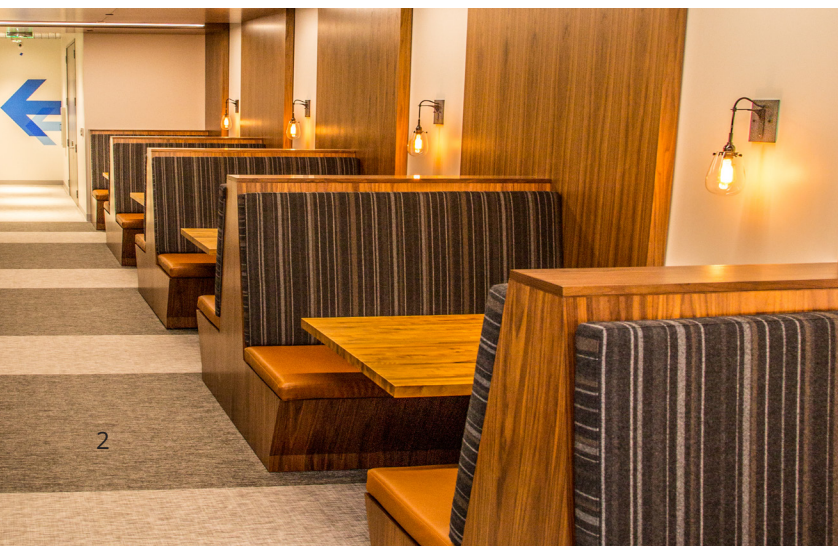


**POST MONTGOMERY
CENTER**





TAKE VIRTUAL TOUR



Post Montgomery Center at a glance:



Panoramic city and North Bay views,
capturing the Golden Gate Bridge



Large 20,000 SF floor
plates



9' ceiling heights, highlighting the abundance of
natural light



Maximum design flexibility, featuring a 12' exterior
column span, 40' north and south core depths



A three-channel under-floor duct system for
easy distribution of data/telecom



Elevator Modernization Project underway, including new
cabs and Destination dispatch elevator system (2018)



Crocker Galleria – 90,000 SF of retail on 3 levels, roof
gardens, free Wi-Fi and Farmers Market every Thursday



On-site underground parking

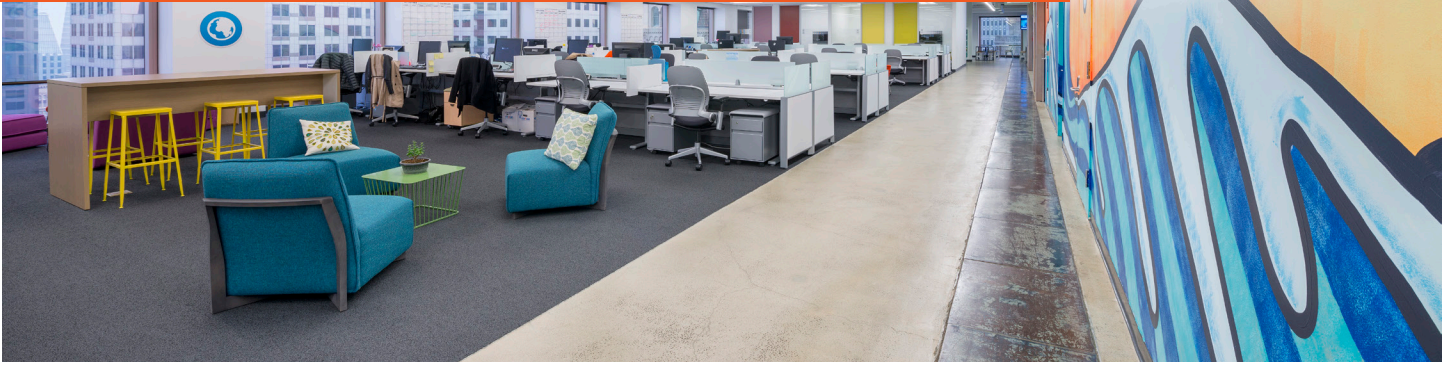


Steps from all major public
transportation including BART/MUNI



Tenant amenity center featuring tenant lounge, conference
facilities, showers, lockers, gym and bike parking

Post Montgomery Center



Certified
LEED Platinum



IREM Certified
Sustainable Property



Energy Star
Rating of 85



Wired Score
Certified Gold



Fitwel Star
Rating of 1

Building Amenities



Client Lounge



Conference Center



Gym



Showers & Lockers



Expansive
Bike Parking



Parking Garage





DINING

- 1 Crocker Galleria (multiple)
- 2 Sam's Grill
- 3 Belden Place (multiple)
- 4 Yank Sing
- 5 The Salt House
- 6 Bob's Steak & Chophouse
- 7 Uno Dos Tacos
- 8 Hops & Hominy
- 9 Gitane
- 10 Gaspar Brasserie
- 11 Per Diem
- 12 Aquitaine



SHOPPING

- 1 Crocker Galleria
- 2 Maiden Lane
- 3 Target Express
- 4 Tiffany & Co.
- 5 Gump's
- 6 Graff Diamonds
- 7 Shreve & Co.
- 8 Saks 5th Avenue
- 9 Wilkes Bashford



HOTELS

- 1 Ritz Carlton Residences
- 2 Palace Hotel
- 3 Loews Regency
- 4 Omni Hotel
- 5 Ritz-Carlton Hotel Grand
- 6 Hyatt



OUTDOORS

- 1 One Montgomery Terrace
- 2 McKesson Plaza
- 3 One Bush Plaza
- 4 Market Street Plaza
- 5 560 Mission Street Plaza
- 6 Union Square



FITNESS

- 1 24-Hour Fitness
- 2 Equinox
- 3 Rowclub
- 4 Satori Yoga Studio
- 5 Maiden Lane Studios
- 6 Maxwell Fitness
- 7 Crunch

Club PMC



POST MONTGOMERY
CENTER



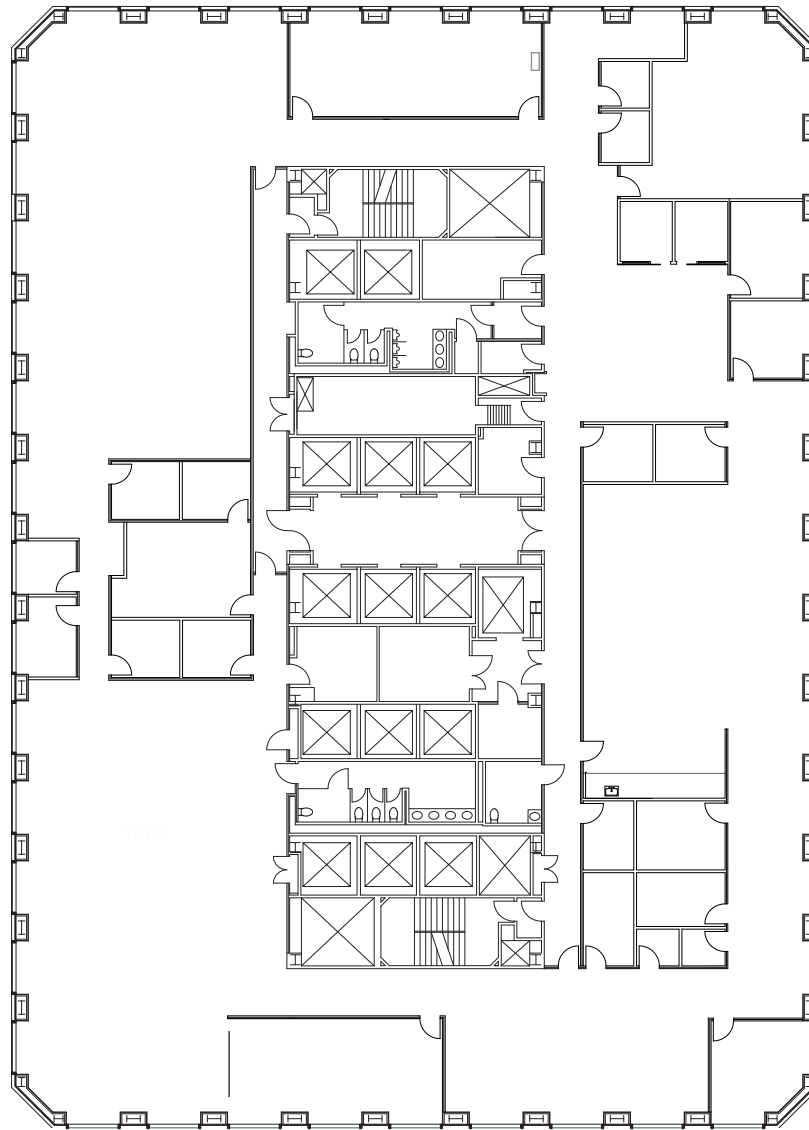


POST MONTGOMERY
CENTER

Availabilities

Suite 1600

19,538 RSF



- Available 10/1/2024
- Mostly open full floor
- Partially exposed ceilings
- 1 Large training room
- 2 Large conference rooms
- 15 Small conference rooms
- Large kitchen/all hands space
- 4 Phone rooms
- 1 Mother's room
- 1 Unisex restroom
- IT/server room

Matthew Shewey
+1 415 395 7255
matt.shewey@jll.com
RE License #01445125

Ted Davies
+1 415 395 4972
ted.davies@jll.com
RE License #01460185

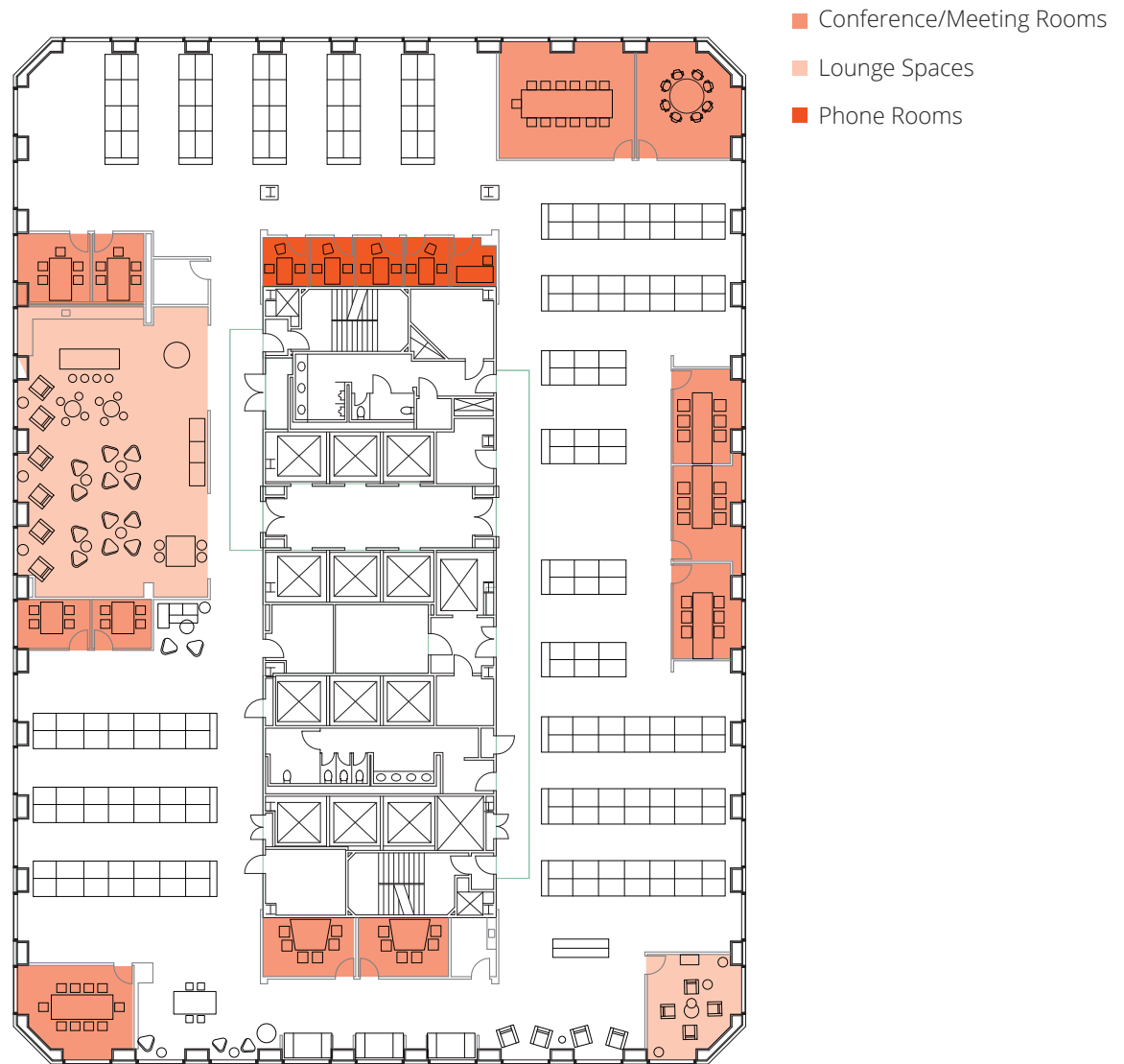


No warranty or representation, expressed or implied, is made as to the accuracy of the information contained herein, the same is submitted subject to errors, omission, change of price, rental or other conditions, without notice, and to any special listing conditions imposed by our principals.



Suite 1900

20,055 RSF



- 12 smaller meeting rooms/private offices
- 1 large meeting rooms
- 5 phone rooms
- Open area for 176 workstations
- Large lounge/kitchen/reception area
- 6 medium meeting rooms
- 6 small meeting rooms

Matthew Shewey
+1 415 395 7255
matt.shewey@jll.com
RE License #01445125

Ted Davies
+1 415 395 4972
ted.davies@jll.com
RE License #01460185

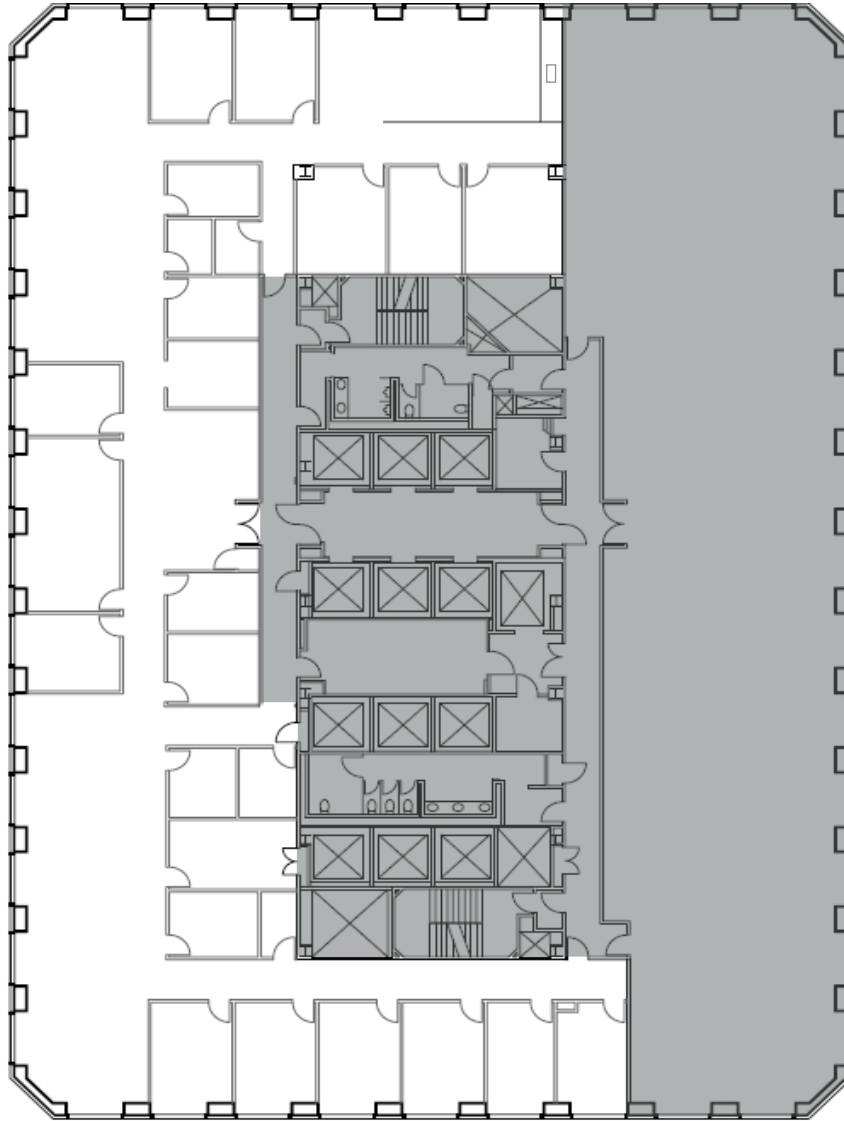


No warranty or representation, expressed or implied, is made as to the accuracy of the information contained herein, the same is submitted subject to errors, omission, change of price, rental or other conditions, without notice, and to any special listing conditions imposed by our principals.



Suite 2100

11,731 RSF



- Available now
- 8 perimeter offices
- 5 conference rooms
- 9 Internal meeting rooms/offices
- Abundant open space
- Excellent Northern & Western views
- Large kitchen
- Double door entry
- Shower
- Copy/storage room
- IT/server room
- Can be combined with suite 2200 for 31,805 RSF

Matthew Shewey
+1 415 395 7255
matt.shewey@jll.com
RE License #01445125

Ted Davies
+1 415 395 4972
ted.davies@jll.com
RE License #01460185

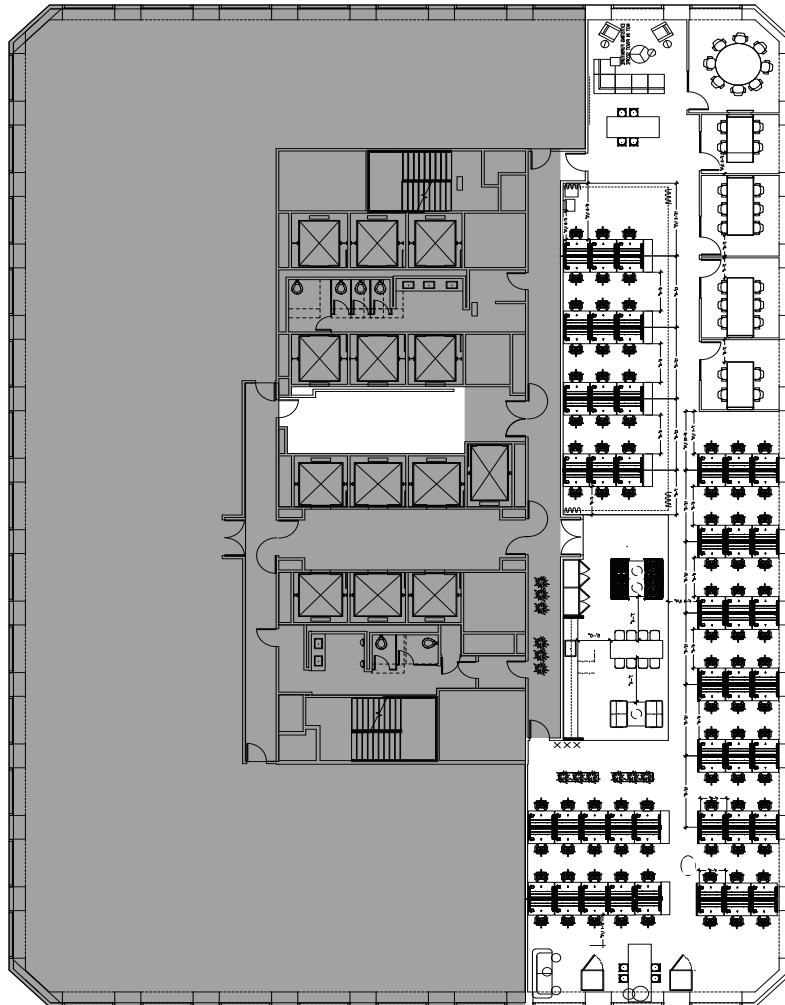


No warranty or representation, expressed or implied, is made as to the accuracy of the information contained herein, the same is submitted subject to errors, omission, change of price, rental or other conditions, without notice, and to any special listing conditions imposed by our principals.



Suite 2150

8,343 RSF



- Double door entry
- 3 medium meeting rooms
- 2 small meeting rooms
- Open area
- Large open kitchen
- Open area for 82 workstations

Matthew Shewey

+1 415 395 7255

matt.shewey@jll.com

RE License #01445125

Ted Davies

+1 415 395 4972

ted.davies@jll.com

RE License #01460185

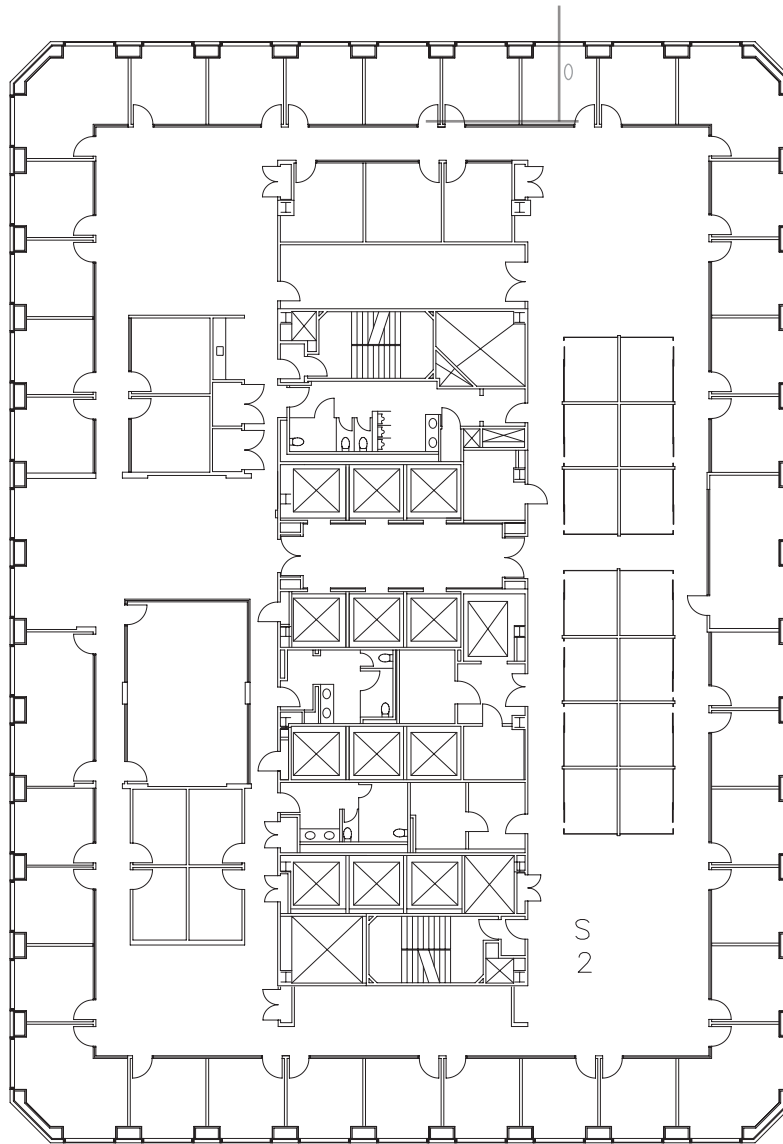


No warranty or representation, expressed or implied, is made as to the accuracy of the information contained herein, the same is submitted subject to errors, omission, change of price, rental or other conditions, without notice, and to any special listing conditions imposed by our principals.



Suite 2200

20,074 RSF



- Available now
- 34 perimeter offices with glass fronts
- 20 internal offices
- 1 large conference room
- 1 large training room
- Large kitchen
- Can be combined with suite 2100 for 31,805 RSF

Matthew Shewey
+1 415 395 7255
matt.shewey@jll.com
RE License #01445125

Ted Davies
+1 415 395 4972
ted.davies@jll.com
RE License #01460185

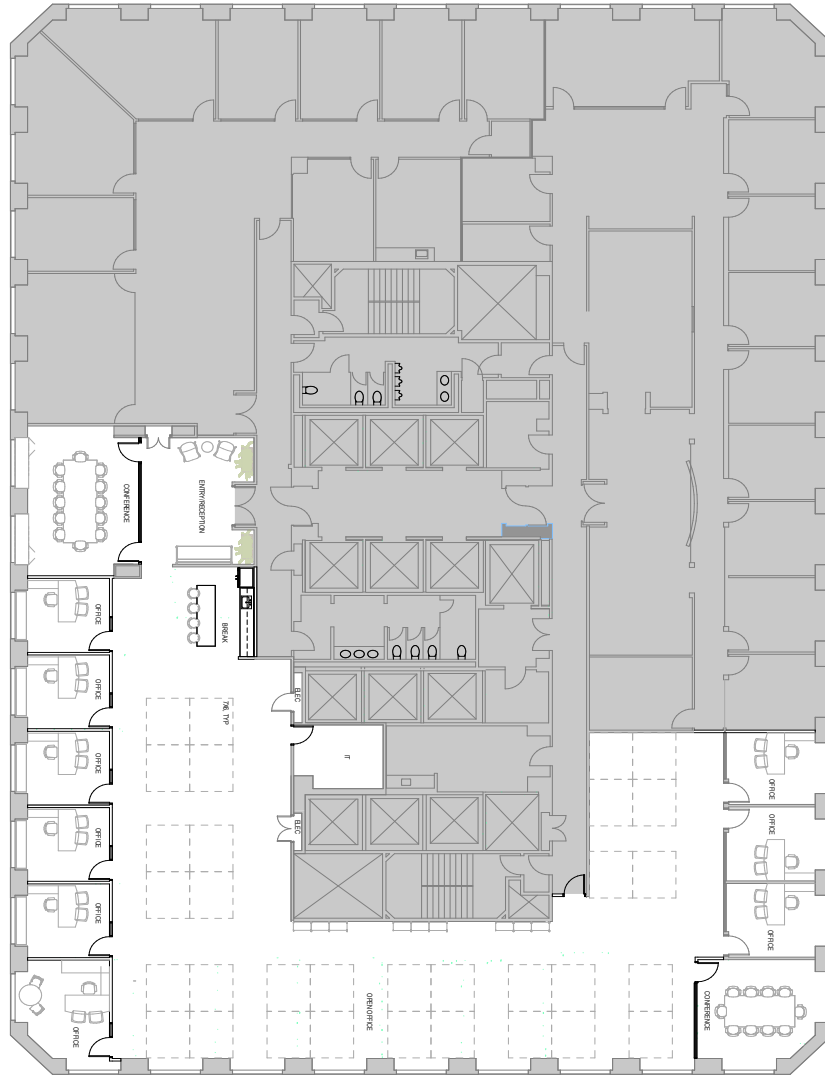


No warranty or representation, expressed or implied, is made as to the accuracy of the information contained herein, the same is submitted subject to errors, omission, change of price, rental or other conditions, without notice, and to any special listing conditions imposed by our principals.



Suite 2350

8,915 RSF



- New spec suite
- Can be demised to 6,347 or 2,568 RSF
- Double door entry
- 1 large conference room
- 1 medium conference room
- 9 perimeter private offices
- Open kitchen
- Server room

Matthew Shewey
+1 415 395 7255
matt.shewey@jll.com
RE License #01445125

Ted Davies
+1 415 395 4972
ted.davies@jll.com
RE License #01460185

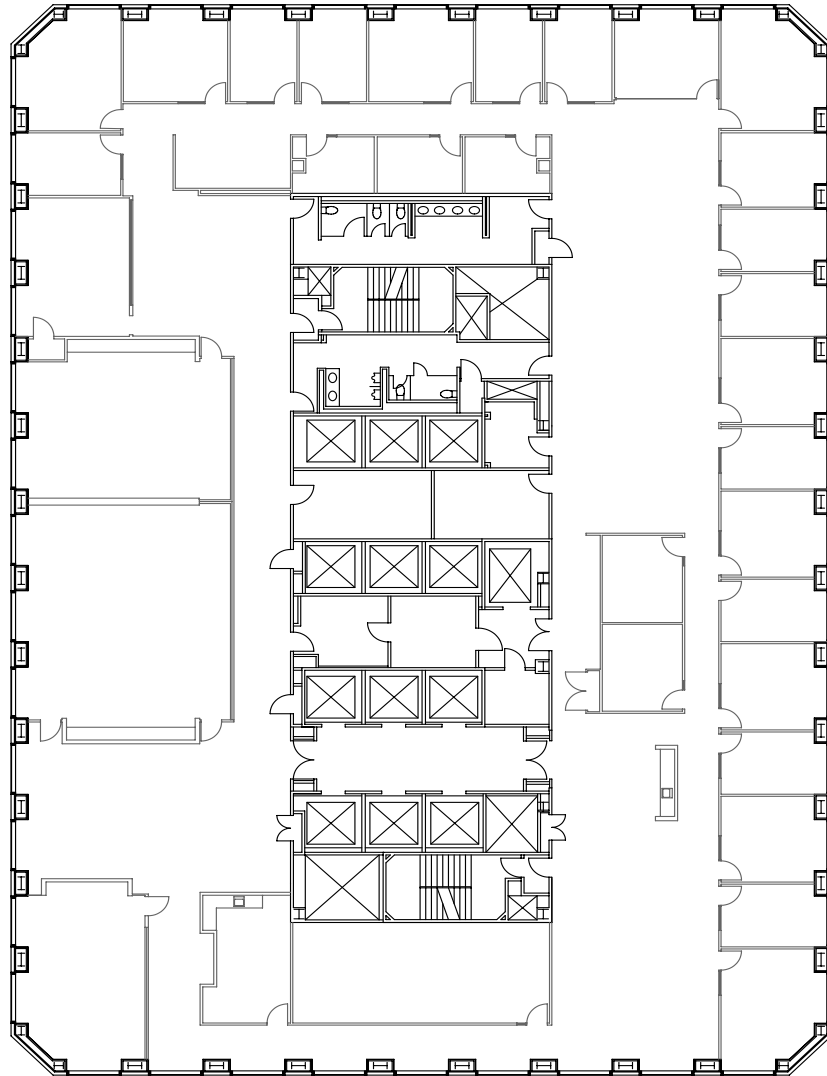


No warranty or representation, expressed or implied, is made as to the accuracy of the information contained herein, the same is submitted subject to errors, omission, change of price, rental or other conditions, without notice, and to any special listing conditions imposed by our principals.



Suite 2700

20,126 RSF



- Available now
- Office intensive full floor opportunity
- 22 perimeter private offices
- 5 interior private offices
- Two large conference rooms
- Northern bay views

Matthew Shewey

+1 415 395 7255

matt.shewey@jll.com

RE License #01445125

Ted Davies

+1 415 395 4972

ted.davies@jll.com

RE License #01460185

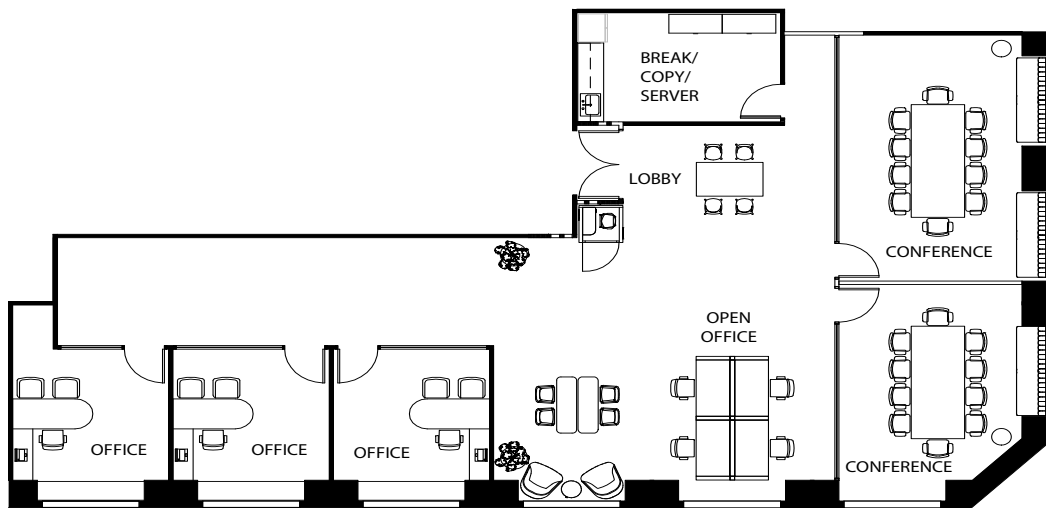
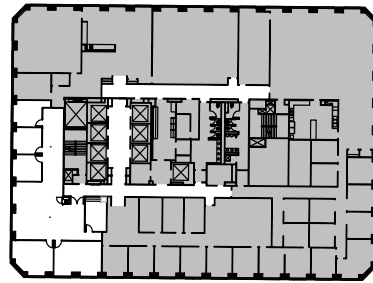


No warranty or representation, expressed or implied, is made as to the accuracy of the information contained herein, the same is submitted subject to errors, omission, change of price, rental or other conditions, without notice, and to any special listing conditions imposed by our principals.



Suite 3450

3,216 RSF



- New spec suite
- 2 Conference rooms
- 3 Perimeter private offices
- Kitchen
- IT/Storage
- Excelled western and southern views

Matthew Shewey

+1 415 395 7255

matt.shewey@jll.com

RE License #01445125

Ted Davies

+1 415 395 4972

ted.davies@jll.com

RE License #01460185

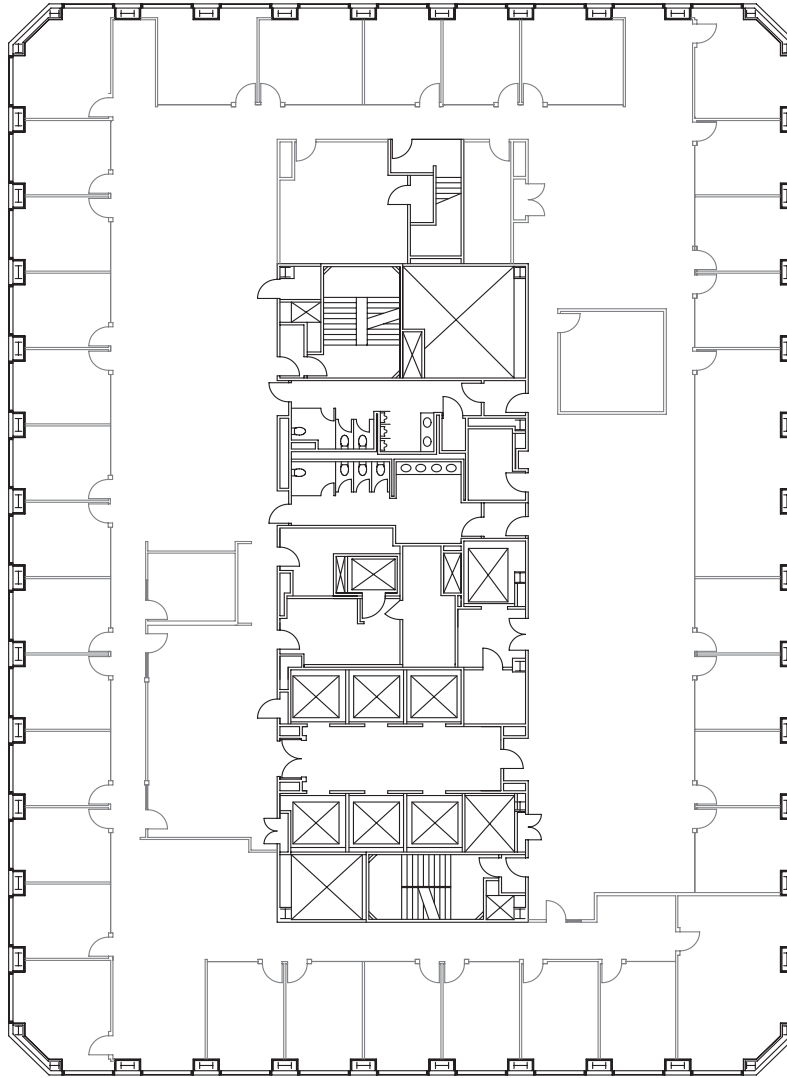


No warranty or representation, expressed or implied, is made as to the accuracy of the information contained herein, the same is submitted subject to errors, omission, change of price, rental or other conditions, without notice, and to any special listing conditions imposed by our principals.



Suite 3500

20,418 RSF



- Available now
- Excellent Northern, Southern and Eastern bay views
- 32 perimeter private offices with glass fronts
- Kitchen
- Large storage room
- 2 large conference rooms

Matthew Shewey
+1 415 395 7255
matt.shewey@jll.com
RE License #01445125

Ted Davies
+1 415 395 4972
ted.davies@jll.com
RE License #01460185



No warranty or representation, expressed or implied, is made as to the accuracy of the information contained herein, the same is submitted subject to errors, omission, change of price, rental or other conditions, without notice, and to any special listing conditions imposed by our principals.





**POST MONTGOMERY
CENTER**

Matthew Shewey
+1 415 395 7255
matt.shewey@am.jll.com
RE License #01445125

Ted Davies
+ 1 415 395 4972
ted.davies@am.jll.com
RE License #01460185

One Front Street, Suite 2100
San Francisco, CA 94111
www.jll.com/san-francisco